



Assessment of Dietary Intake, Energy Status, and Factors Associated With RED-S in Vocational Female Ballet Students

Rita Civil¹, Antonia Lamb¹, Diana Loosmore², Louisa Ross², Kerry Livingstone², Fiona Strachan³, James R. Dick³, Emma J. Stevenson⁴, Meghan A. Brown⁵ and Oliver C. Witard^{1*}

¹ Faculty of Health Science and Sport, University of Stirling, Stirling, United Kingdom, ² Modern Ballet, Royal Conservatoire of Scotland, Glasgow, United Kingdom, ³ Institute of Aquaculture, University of Stirling, Stirling, United Kingdom, ⁴ Institute of Cellular Medicine, Newcastle University, Newcastle upon Tyne, United Kingdom, ⁵ School of Sport and Exercise, University of Gloucestershire, Cheltenham, United Kingdom

OPEN ACCESS

Edited by:

Joanna Bowtell,
University of Exeter, United Kingdom

Reviewed by:

Matthew A. Wyon,
University of Wolverhampton,
United Kingdom
Andy Sparks,
Edge Hill University, United Kingdom

*Correspondence:

Oliver C. Witard
oliver.witard@stir.ac.uk

Specialty section:

This article was submitted to
Sport and Exercise Nutrition,
a section of the journal
Frontiers in Nutrition

Received: 24 September 2018

Accepted: 12 December 2018

Published: 09 January 2019

Citation:

Civil R, Lamb A, Loosmore D, Ross L, Livingstone K, Strachan F, Dick JR, Stevenson EJ, Brown MA and Witard OC (2019) Assessment of Dietary Intake, Energy Status, and Factors Associated With RED-S in Vocational Female Ballet Students. *Front. Nutr.* 5:136. doi: 10.3389/fnut.2018.00136

Elite ballet dancers are at risk of health issues associated with Relative Energy Deficiency in Sport (RED-S). This study determined the nutritional status, estimated energy status, and assessed factors related to RED-S in vocational female ballet students. Using a cross-sectional study design, we measured dietary intake (food diaries and 24 h dietary-recall) and energy expenditure (accelerometry) in vocational female ballet students ($n = 20$; age: 18.1 ± 1.1 years; body mass index: 19.0 ± 1.6 kg·m²; body fat: $22.8 \pm 3.4\%$) over 7 days, including 5 weekdays (with dance training) and 2 weekend days (without scheduled dance training). Furthermore, we assessed eating behaviors, menstrual function, risk of RED-S (questionnaires), and body composition (dual x-ray absorptiometry). Energy and macronutrient intakes of vocational ballet students were similar during weekdays and weekend days ($P > 0.050$), whereas total energy expenditure was greater on weekdays than weekend days ($P < 0.010$; 95% CI: 212, 379). Energy balance was lower on weekdays (-425 ± 465 kcal·day⁻¹) than weekend days (-6 ± 506 kcal·day⁻¹, $P = 0.015$; 95% CI: $-748, -92$). Exercise energy expenditure was greater on weekdays (393 ± 103 kcal·day⁻¹) than weekend days (213 ± 129 kcal·day⁻¹; $P < 0.010$; 95% CI: 114, 246), but energy availability was similar between time periods (weekdays 38 ± 13 kcal·kg FFM·day⁻¹; weekend days 44 ± 13 kcal·kg FFM·day⁻¹; $P = 0.110$). Overall, 35% of participants had an energy intake $< 1,800$ kcal·day⁻¹, 44% had reduced energy availability ($30-45$ kcal·kg FFM·day⁻¹), and 22% had low energy availability (< 30 kcal·kg FFM·day⁻¹). Menstrual dysfunctions were reported in 40% of participants; 15 and 25% reported oligomenorrhea and secondary amenorrhea, respectively; while 65% were classified at risk of RED-S (based on the Low Energy Availability in Females Questionnaire). All participants had adequate bone health (bone mineral density Z-score: 1.1 ± 0.9 SD), but 20% had $< 85\%$ expected body weight. The observation of an energy deficit in vocational female ballet students was

primarily attributed to an inability to plan energy intake and thereby meet higher energy requirements during ballet training weekdays. Screening for factors associated with RED-S and tailoring education programs to inform energy and nutrition requirements for health and training are recommended in elite young ballet students.

Keywords: energy availability, RED-S, menstrual dysfunctions, vitamin D, ballet dancers, bone mineral density (DXA), energy intake and expenditure, eating behaviors

INTRODUCTION

Physique is integral to aesthetics and performance in elite ballet (1). In this regard, a lean and slim body physique is typically considered advantageous for artistic expression and producing powerful and graceful movements specific to ballet (2). However, the relentless desire to achieve the “ideal” body physique combined with other aspects such as high training demands and a competitive environment, place elite level ballet students and dancers at risk of a syndrome called Relative Energy Deficiency in Sport, or RED-S (3). This syndrome is characterized by impaired physiological function with negative health and performance consequences that extend beyond the initial Female Athlete Triad model (4). Such factors associated with RED-S include, but are not limited to, low bone mineral density (BMD), disrupted metabolic function [e.g., suppressed resting metabolic rate (RMR)], alterations in hormone levels, and impaired menstrual function (3). Accordingly, a previous study reported that 69% of professional ballet dancers experienced secondary amenorrhea (5). Moreover, a decreased RMR (6–9) and altered hormone levels (7, 10–12) are commonly reported in elite ballet dancers while some, but not all, studies have reported low BMD in female dancers (9, 13, 14). The consequences of RED-S may be more severe in young dancers such as vocational ballet students by affecting growth and development and limiting BMD that typically peak by the end of the second or early in the third decade of life (14).

The underlying physiological cause of RED-S is low energy availability (EA). A state of low EA results when dietary energy intake (EI) is insufficient to support the energy costs associated with exercise combined with all other physiological processes on-going in metabolically active tissues (15). Early laboratory studies identified a threshold level of <30 kcal·kg FFM·day⁻¹ to represent low EA, below which physiological functions were impaired in healthy females (15). Although, an EA level of 30 kcal·kg FFM·day⁻¹ was recognized to correspond with the value of RMR, more recent evidence suggests that this energy level may not provide a universal threshold across different body sizes during pubertal age (16). Accordingly, some individuals may experience physiological disruptions with reduced EA levels (30–45 kcal·kg FFM·day⁻¹) (16). Optimal levels of EA for the healthy functioning of body systems and weight maintenance or energy balance (EB) are generally accepted to be ~ 45 kcal·kg FFM·day⁻¹ (16). However, individuals that have previously experienced a period of low/reduced EA may currently have an adequate energy status and be weight stable, but symptoms of RED-S may still persist (16). Accordingly, several screening tools such as the Low Energy Availability in Females Questionnaire (LEAF-Q) have

been developed to detect female athletes and dancers at risk of RED-S, based on self-reported physiological symptoms of low EA (17).

Low EA can exist both in the presence or absence of eating disorders/disordered eating and also can be caused by inadvertent under-eating (3). Previous research revealed low EA levels, a high prevalence of health-associated problems, and disordered eating behaviors in elite ballet dancers (18, 19). High training volumes with reduced opportunities to eat (20) or misguided weight loss practices (16) may contribute to low EA in dance populations. Hence, adequate energy intake and nutrition is critical for vocational ballet students to facilitate growth and development, while supporting the physiological demands of training (21).

A limited number of studies have simultaneously measured EI and total energy expenditure (TEE) to estimate energy status in elite dance populations (10, 22, 23). In this regard, we recently assessed EI and TEE, and calculated EB and EA in pre-professional female contemporary dancers during a typical 7-day period, including weekdays with scheduled dance training, and weekend days without scheduled dance training (22). Our findings revealed that dancers were in negative EB and low EA during weekdays, and in a marginal positive EB and reduced EA during weekend days (22). However, no study to date has simultaneously measured EI and TEE in pre-professional (i.e., vocational students) ballet dancers over a 7-day period, comparing weekdays and weekend days. Therefore, the primary aim of this study was to assess dietary intake and energy expenditure, and estimate EB and EA of vocational female ballet students during a typical 7-day period. A secondary study aim was to characterize the prevalence of factors associated with RED-S in this cohort of elite young ballet students.

MATERIALS AND METHODS

Participants and Ethical Approval

Twenty students in full-time vocational ballet training attending the Royal Conservatoire of Scotland in Glasgow volunteered and completed the study. This sample size is similar to our prior study in pre-professional contemporary dancers (22), and a recent study that determined the prevalence of low EA indicators in elite female athletes (24). Participants were all Caucasian, young (18 ± 1 years of age), and were either enrolled in the 1st ($n = 8$), 2nd ($n = 11$), or 3rd ($n = 4$) years of study at the Royal Conservatoire. Exclusion criteria included any health condition that would prevent from successful participation in the study (i.e., epilepsy, bronchitis, severe asthma, cardiac complaints, bacterial

or viral infection, pregnancy, disabling injury). Vocational ballet students were informed about the study design prior to signing an informed consent. The study was conducted during the autumn term of semester. Permission to undertake the study was provided by the Royal Conservatoire of Scotland and ethical approval was granted by The University of Stirling Research Ethics Committee and NHS East of Scotland Research Ethics Committee.

Overview of Study Design

In a cross-sectional design, and using similar methodology to our previous study in pre-professional contemporary dancers (22), our dataset was collected at baseline and throughout a 7-day period (**Figure 1**). At baseline, measurements of anthropometry, body composition, eating behaviors, menstrual function, risk of RED-S, and vitamin D status were collected. Thereafter, dietary intake was assessed using self-reported weighed food diaries and 24-h recall interviews. Energy expenditure was estimated using accelerometry and activity logs in the participants' normal environment. Energy intake and expenditure were assessed during 5 weekdays of scheduled dance training and 2 weekend days without scheduled dance training. All vocational female ballet students were encouraged to maintain their usual dietary and activity behaviors, including their scheduled dance training during this period.

Body Composition

All anthropometric measurements were performed in the morning by the same trained researcher. Participants reported to the laboratory in a fasted (>10 h) and rested (i.e., avoiding intense exercise for at least 12 h) state, and emptied their bladders prior to measurements. Body mass (BM) was measured to the nearest 0.1 kg in minimal clothing using an electronic scale (Seca Quadra 808, Birmingham, UK). Height was measured without shoes and in minimal clothing using a stadiometer (Seca, Birmingham, UK) to the nearest 1 mm. Body mass index (BMI) was calculated and converted into percentiles using appropriate growth charts (25). Waist and hip circumference were measured to determine waist-to-hip ratio (22).

In accordance with the best practice protocol recommended by Nana et al. for measuring body composition (26), a Dual-Energy X-ray Absorptiometry (DXA) (Lunar iDXA GE Healthcare, USA) total body scan was conducted to determine body fat (BF), fat free mass (FFM), total body BMD and Z-scores. The typical technical error of measurement for iDXA machines using this protocol is ~ 1 –2% (26). Participants were instructed to drink 500 ml of water within the 2 h before the scan in order to minimize potential errors in measurements caused by hypohydration (27). Scans were carried out using the automatic thickness mode chosen by the software and analyzed using GE Encore 13.40.038 Software (GE Healthcare, USA). The iDXA was calibrated daily with phantoms as per manufacturer guidelines. To ensure the accurate examination of BM changes over the 7-day period, a final measurement of BM was conducted under the same standardized conditions implemented at baseline. Baseline measurements of BM and

FFM were used for all further estimations of RMR and EA, respectively.

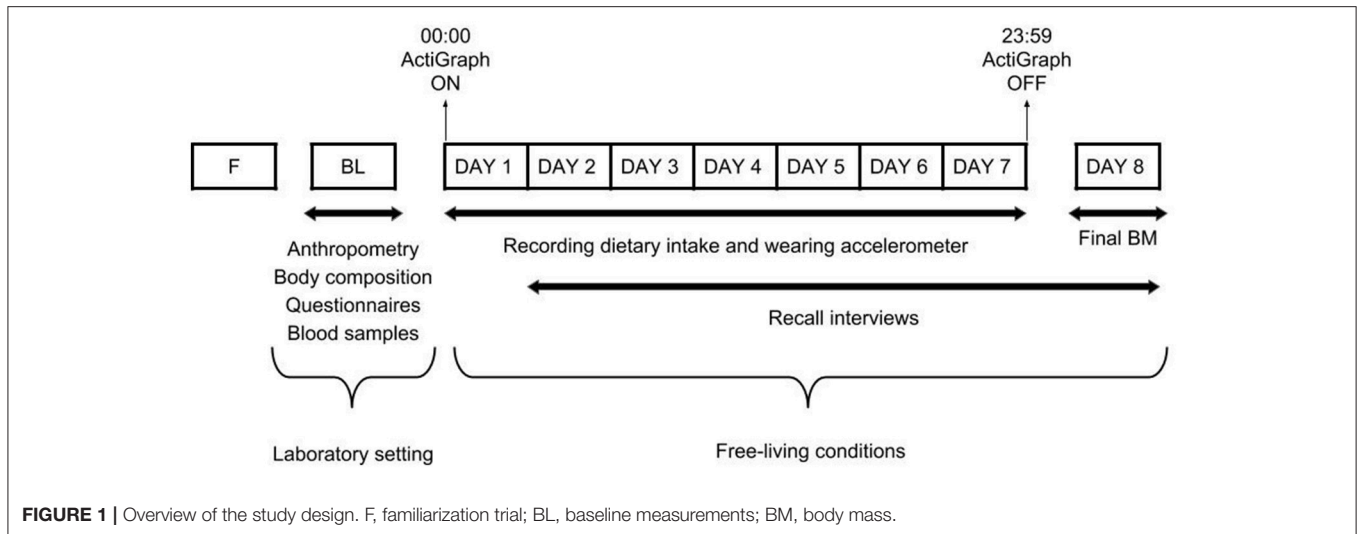
Self-Reported Eating Behaviors, Menstrual Function, and Energy Status

Participants completed the Healthier Dance Practice National Survey (28), which provided information regarding dance background, injury history, and general health status. A menstrual cycle questionnaire was completed to evaluate current and historical menstrual function. In addition, the 18 item Three Factor Eating Questionnaire (TFEQ) was used to assess eating behaviors of restrained eating (or conscious restriction of food intake in order to control body weight or to promote weight loss), uncontrolled eating (tendency to eat more than usual due to a loss of control over intake accompanied by subjective feelings of hunger), and emotional eating (inability to resist emotional cues) (29). Absolute scores were obtained for responses to all items coded on a four-point scoring scale. The degree of expression (0–100%) of each behavior was determined (30), with higher values indicating more expression of the behavior. The LEAF-Q (17) was administered to identify participants at risk of energy deficiency, and to complement the assessment of menstrual function. Eumenorrhea was defined as regular menstrual cycles (i.e., cycles occurring at intervals of 21–35 days). In terms of menstrual dysfunctions (MD), primary amenorrhea was defined as age at menarche of ≥ 15 years old, secondary amenorrhea was defined as the absence of ≥ 3 consecutive menses, and oligomenorrhea was defined as a cycle length >45 days (5).

Dietary Intake

Dietary intake, including energy, macronutrient composition, fluid, and fiber intakes, was determined through the combined method of a self-reported weighed food diary and 24-h recall interviews, as previously described (22). This combined method has previously been shown to be a valid technique for quantifying food intake in male (31) and female (32) adolescent athletic populations. Prior to data collection, participants were familiarized with the format of food diaries, trained in appropriate recording methodology, and underreporting issues were discussed. Participants were then asked to complete a 7-day food diary, providing a detailed description of their food and fluid intake (i.e., quantity of item, brand names, timing of intake, cooking method). Where possible, photographic evidence was requested. Electronic portable scales (CS200 Ohaus Corp., USA) were provided to accurately record the weight of food items to the nearest gram. All measurements of dietary intake were conducted during free-living conditions and no attempts were made to influence the diet of participants.

Vocational female ballet students also were asked to take part in a 24-h diet recall interview using the two-pass method (33) for each day of the data collection period. The interview was carried out in person or over the phone when not possible to meet. The recall was cross-referenced with the food diary in order to add any missing data or clarify ambiguous information. Commercially available dietary analysis software (Nutritics Ltd, Ireland) was used to estimate EI and nutrient intake. The product



label was consulted and nutrient composition was manually entered when foods or fluids were not listed in the database.

Energy Expenditure

Individual RMR was estimated using the Harris-Benedict equation (34), as used previously (22). The thermic effect of food (TEF) was calculated for all macronutrients using values of 7.0, 27.5, and 2.5% for carbohydrate, protein, and fat, respectively (22). The thermic effect of activity was measured using a combination of accelerometry and data from activity logs. A tri-axial accelerometer (ActiGraph GT3X+, Pensacola, USA) was placed on the individuals' waist, and was secured with an elastic belt. The ActiGraph device was worn continuously throughout the 7-day study period, except during activities that would submerge the accelerometer in water (e.g., swimming, showering) or if removed for legitimate reasons (e.g., discomfort during sleep or when it was prohibited during performances or rehearsals) as per Brown et al. (22). Sixty-second sampling epochs were collected at a 60 Hz sample rate. Using data analysis software (ActiLife 5, ActiGraph), the Freedson VM3 combination algorithm (35) was used to estimate energy expenditure from the vector magnitude counts per minute of the three axes. In addition, participants wore a heart rate monitor strap (Polar H7, Kempele, Finland) during any active and training activities that connected to the ActiGraph by Bluetooth.

To account for missing data during periods when the accelerometer was removed, participants were required to register all non-wear periods (activity, time, and duration) on the activity log. Corrected Metabolic Equivalent (MET) values from the Compendium of Physical Activities (36) were used to estimate non-wear energy expenditure. An average 7-day MET value, as provided by the ActiGraph device, was used in cases of battery failure or failure to record non-wear activity up to an 8-h period. Data from two participants were removed from the energy expenditure analysis due to technical difficulties with accelerometer equipment (i.e., two ActiGraph batteries failed). Energy expenditure data collected during a weekend day from

two participants also were excluded from the analysis due to non-wear periods without activity specification exceeding 8 h on that day. When using MET values, RMR was subtracted from each corresponding time period to ensure energy expenditure was not over-estimated.

Estimating Energy Status

Daily TEE was calculated by combining RMR, TEF, and thermic effect of activity (combining data from the accelerometer and from non-wear periods) (37). Thermic effect of activity was separated into exercise energy expenditure (EEE) and non-exercise activity thermogenesis (NEAT) (37). In order to determine EEE, we defined the time periods that represented 'exercise activity' by using the overall average active caloric expenditure (i.e., the average energy expenditure given as $\text{kcal} \cdot \text{min}^{-1}$ for all epochs with a heart rate value $>79 \text{ beats} \cdot \text{min}^{-1}$ and vector magnitude count levels $>1,951 \text{ counts} \cdot \text{min}^{-1}$) provided by ActiGraph for each individual. Only calories expended during periods where the active caloric expenditure was greater or equal than the overall average were included in the calculation of EEE. Daily EB was estimated by subtracting TEE from EI (37). In order to address methodological limitations associated with variations in EI and TEE, EB was defined as values within 300 kcal of 0 since this energy value corresponds to the predicted amount of liver glycogen for female athletes (38). Daily EA was calculated by subtracting EEE from EI, and then dividing by FFM (37). The thresholds for defining a reduced EA and low EA were $30\text{--}45 \text{ kcal} \cdot \text{kg FFM} \cdot \text{day}^{-1}$ and $<30 \text{ kcal} \cdot \text{kg FFM} \cdot \text{day}^{-1}$, respectively.

Vitamin D Status

Finger prick blood samples were collected in a fasted state for analysis of vitamin D concentrations. Two blood spots were dispensed onto specialized Whatman 903 blood collection cards (GE Healthcare Ltd, Cardiff) that were impregnated with 1% BHT in methanol. Once dried, samples were stored at -700°C until further analysis of 25-hydroxyvitamin D

[25(OH)D] concentrations. Thereafter, blood spot samples were extracted using the DBS method of extraction (39) and analyzed by liquid chromatography tandem mass spectrometry (LC-MS/MS) utilizing components of the MassChrom® 25-OH-Vitamin D3/D2 in Serum/Plasma kit. In brief, a 6 mm circle was punched from the center of the dried blood spot and placed in a clean microtube (Eppendorf). 0.1% SDS solution was added, followed by internal standard mix (MassChrom® part no. 62004). The microtube was mixed before being placed in a shaking water bath at 40°C for 30 min. Acetonitrile was then added and the microtube returned to the water bath for a further 5 min. Following centrifugation at 10,000 rpm, the supernatant was transferred to a clean microtube before evaporation to dryness under nitrogen and re-suspension in methanol:water 70:30 for LC-MS/MS analysis. Samples were then run in duplicate in conjunction with the 6PLUS1 Multilevel Serum Calibrator Set (MassChrom® 25-OH-Vitamin D3/D2 on serum/plasma part no. 62039). 25(OH)D concentrations were converted for haematocrit level (39).

Data Presentation and Statistical Analysis

Data are presented as means \pm standard deviations (SD), unless otherwise specified. All data were normally distributed as determined by the Shapiro–Wilk test. Student's paired samples *t*-tests were used to analyse differences in BM measured at baseline and the final time-point. The daily average of TEE (kcal), EEE (kcal), EI (kcal), EA (kcal·kg FFM·day⁻¹), macronutrient (% of EI, g and g·kg⁻¹), fiber (g), fluid (ml), and alcohol (g) intakes were determined for three periods: the total 7-day recording period, weekdays days (average of 5 days), and weekend days (average of 2 days). Paired *t*-tests were used to compare EI, macronutrient, fiber, and fluid intakes, TEE TEF, EEE, NEAT, EB, and EA between weekday and weekend periods. A Pearson correlation coefficient was used to determine the relationship between menstrual function/LEAF-Q scores and EA levels. Correlation values (*R*²) were set as <0.2: weak correlation, 0.5: medium correlation, and >0.8: strong correlation. Significance level was set at *P* < 0.05, and 95% confidence intervals (95% CI) presented for significant differences. Data analysis was conducted using SPSS v19 (SPSS Inc., Chicago, USA).

RESULTS

Participant Characteristics

Table 1 summarizes participant characteristics for anthropometry and body composition, health parameters, and training history in vocational female ballet students. Participants lost 0.47 ± 0.64 kg BM during the 7-day period (*P* = 0.004; 95% CI: 0.16, 0.76). Body composition measurements of BF%, FFM and BMD were within the normal range. The LEAF-Q score was ≥ 8 , which is above a normal/healthy score value. Eleven participants (55%) had 25(OH)D concentrations ≥ 50 nmol·L⁻¹, which is above vitamin D deficiency levels.

Eating Behaviors

Based on values calculated from the TFEQ, the most prevalent eating behavior was uncontrolled eating (**Figure 2**). In total,

TABLE 1 | Participant characteristics and health parameters.

	<i>n</i> = 20, mean \pm SD
Age (y)	18.1 \pm 1.1
BM baseline (kg)	54.4 \pm 5.8
BM final (kg)	54.0 \pm 5.7*
Height (m)	1.69 \pm 0.54
BMI (kg·m ⁻²)	19.0 \pm 1.6
W:H	0.73 \pm 0.19
BF (%)	22.9 \pm 3.4
FFM (kg)	42.5 \pm 4.0
Total BMD (g·cm ⁻²)	1.176 \pm 0.771
Z-score (SD)	1.145 \pm 0.930
25(OH)D (nmol·L ⁻¹)	60.8 \pm 27.9
LEAF-Q score	8.8 \pm 4.4
Self-reported training volume (h·week ⁻¹)	30.9 \pm 6.1

BM, body mass; BMI, body mass index; W:H, waist to hip ratio; BF, body fat measured by dual-Energy X-ray Absorptiometry; FFM, fat free mass measured by Dual-Energy X-ray Absorptiometry; BMD, bone mineral density; 25(OH)D, 25-hydroxyvitamin D; LEAF-Q, Low Energy Availability in Females Questionnaire. *Denotes significant difference vs. baseline measurement (*P* < 0.050).

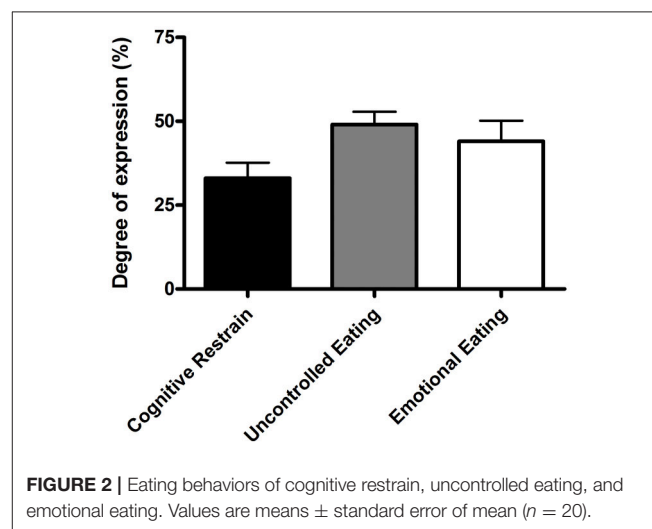


FIGURE 2 | Eating behaviors of cognitive restrain, uncontrolled eating, and emotional eating. Values are means \pm standard error of mean (*n* = 20).

seven of 20 participants (35%) self-reported following a restricted diet with 1 vegan, 3 vegetarians, 2 non-dairy, and 1 weight-reducing.

Estimated Energy Status

Vocational female ballet students had an EI lower than TEE when assessed for the overall 7-day period (*P* = 0.003; 95% CI: -493, -123) and on weekdays (*P* = 0.001; 95% CI: -657, -194), but not during weekend days (*P* = 0.958; **Table 2**). Values of TEE (95% CI: 212, 379), NEAT (95% CI: 90, 158), and EEE (95% CI: 114, 246) values were higher during weekdays than weekend days (*P* < 0.010; **Table 2**). A negative EB (-308 ± 372 kcal·day⁻¹) was observed during weekdays, whereas an EB (-6 ± 506 kcal·day⁻¹) was achieved on weekend days (*P* = 0.015; 95% CI: -748, -92) (**Figure 3A**). There were no statistical differences in EA between weekdays than weekend days (*P* = 0.110; **Figure 3B**).

TABLE 2 | Energy status of vocational female ballet students for the entire 7-day period, weekdays, and weekend days.

	7-day period	Weekdays	Weekend days	P value
EI (kcal·day ⁻¹)	2013 ± 398	1978 ± 455	2102 ± 606	0.423
TEE (kcal·day ⁻¹)	2319 ± 221	2403 ± 224	2108 ± 262	0.000*
RMR (kcal·day ⁻¹)	1408 ± 61	1408 ± 61	1408 ± 61	–
TEF (kcal·day ⁻¹)	165 ± 30	164 ± 35	168 ± 41	0.728
NEAT (kcal·day ⁻¹)	403 ± 107	436 ± 111	312 ± 114	0.000*
EEE (kcal·day ⁻¹)	344 ± 98	393 ± 103	213 ± 129	0.000*
EB (kcal·day ⁻¹)	–308 ± 372	–425 ± 466	–6 ± 506	0.015*
EA (kcal·kg FFM·day ⁻¹)	39.5 ± 10.8	37.7 ± 13.1	44.2 ± 12.9	0.110

EI, energy intake; TEE, total energy expenditure; RMR, resting metabolic rate; TEF, thermic effect of food; NEAT, non-exercise activity thermogenesis; EEE, exercise energy expenditure. Values are means ± SD (*n* = 18). *P*-values refer to the comparison between weekdays and weekend days, *denotes significant difference (*P* < 0.050) between weekdays and weekend days.

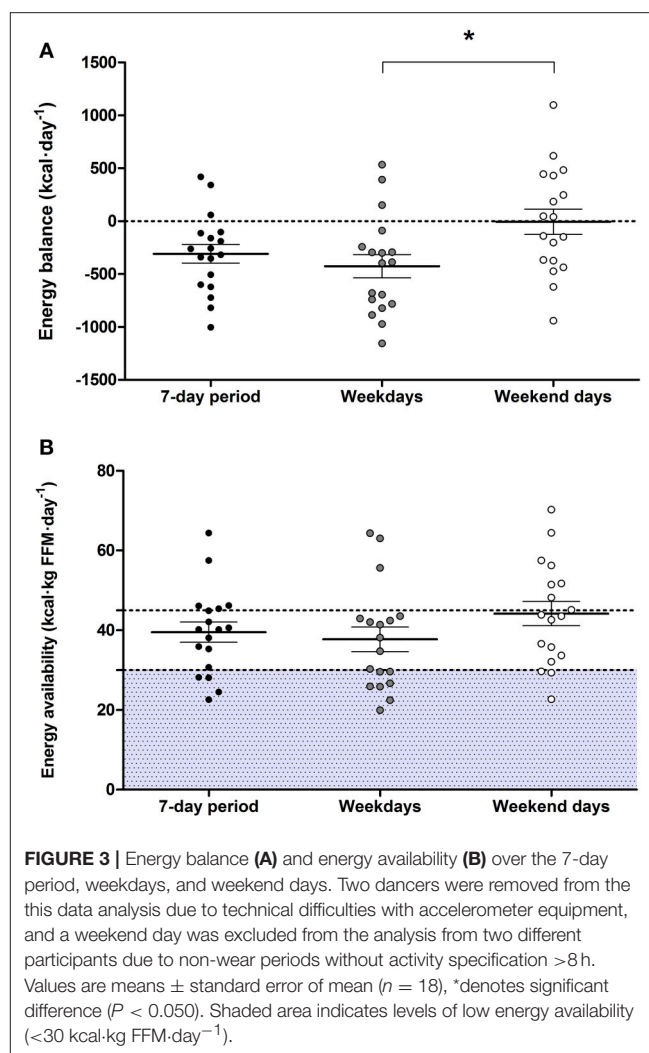
Over the 7-day period, 50% of participants (*n* = 9) had an energy deficit >300 kcal·day⁻¹, 44% (*n* = 8) had reduced EA (30–45 kcal·kg FFM·day⁻¹), and 22% (*n* = 4) had low EA (<30 kcal·kg FFM·day⁻¹).

Energy, Macronutrient, Fiber, and Fluid Intakes

Energy and carbohydrate, protein, and fat intakes, expressed in absolute terms (g·day⁻¹), relative to BM (g·kg·day⁻¹) and as a % of EI, were similar on weekdays and weekend days (*P* > 0.050; **Table 3**). However, vocational ballet students consumed less fiber (*P* = 0.002; 95% CI: 2.4, 9.1) and fluids (*P* < 0.001; 95% CI: 276, 559) during weekend days (**Table 3**). In total, 4 participants consumed alcohol over the 7-day period (8.2 ± 21.4 g·day⁻¹), and alcohol consumption was similar between weekend days and weekdays (*P* = 0.204). Regular supplement use was common among our ballet students (*n* = 11, 55%) and included multivitamins, vitamins C, D, and B12, antioxidants, probiotics, herbal extracts, minerals (zinc, iron, calcium, magnesium, manganese, potassium, selenium, iodine, cooper, chloride), cod liver oil, and fish oil.

Factors Associated With RED-S

Table 4 displays the prevalence of factors associated with RED-S in all 20 vocational ballet students combined, and also divided into six categories depending on whether participants cumulatively reported 0, 1, 2, 3, 4, or 5 of these factors. Menstrual dysfunctions included secondary amenorrhea, reported in five participants (25%); and oligomenorrhea, reported in three (15%) participants. There were no associations between menstrual dysfunctions and EA levels (*R*² = 0.342; *P* = 0.165; *n* = 18) or LEAF-Q scores and EA levels (*R*² = 0.390; *P* = 0.109; *n* = 18) in our cohort of vocational female ballet students.



DISCUSSION

This descriptive study simultaneously assessed the habitual dietary intake, energy expenditure, and subsequent energy status of vocational female ballet students during a typical 7-day period, including five dance training weekdays and 2 weekend days without scheduled dance training. Consistent with previous findings in young elite ballet students (8, 40), we estimated an energy deficit of ~308 kcal·day⁻¹ over the total 7 days. This energy deficit was more pronounced during dance training weekdays since, overall, vocational ballet students maintained levels of EB during weekend days when not undertaking scheduled dance training. Over the 7-day period, EA was ~40 kcal·kg FFM·day⁻¹, with reduced (30–45 kcal·kg FFM·day⁻¹) and low (<30 kcal·kg FFM·day⁻¹) EA levels recorded in 44 and 22% of participants, respectively. We also report a high prevalence of menstrual dysfunctions (40%) and risk of RED-S, with 65% of vocational ballet students recording LEAF-Q scores ≥8.

Our recent study in pre-professional female contemporary dancers directly compared both EI and TEE between weekdays

with scheduled dance training, and weekend days without scheduled dance training (22). Consistent with these findings (22), in the present study of vocational ballet students we report a negative EB on weekdays compared to EB levels on weekend days. Unlike our previous study (22), EA levels remained similar between weekdays and weekend days and we report similar EI and macronutrient intakes between weekdays and weekend days. Therefore, the difference in EB was primarily due to a greater energy expenditure (i.e., NEAT and EEE) during weekdays in the present study. Previous studies in elite ballet dancers report training volumes of 20–48 h per week (8–10). Our vocational ballet students self-reported a training volume of ~30 h per week, including periods of lower intensity activity (e.g., warm-up, stretching, barre phase) and resting periods (41). This activity pattern explains the moderate TEE of $2,319 \pm 221$ kcal·day⁻¹ recorded in our study cohort. Defined as the energy

cost exclusively from exercise, EEE is used to calculate EA. We rigorously determined EEE using a combined approach of heart rate monitors and accelerometry to determine an active energy expenditure threshold for each individual while adjusting for low intensity or sedentary activities. This adjustment is prudent for individuals undertaking high volumes of training with a moderate energy cost in order to avoid overestimation of EEE and underestimation of EA (16). Despite the moderate TEE and EEE recorded for our vocational ballet students, their EI was insufficient to support the higher energy requirements of training. This observation implies that elite ballet students would benefit from a better understanding of their training energy needs and nutrition strategies required for optimal health and performance.

The 7-day EI of our vocational ballet students was ~2,000 kcal per day, and is consistent with previous findings in young (39, 40, 42) and elite (23, 43) ballet students. In contrast, studies in senior professional (8) and pre-professional (10, 44) ballet dancers reported a lower dietary EI (~1,600 kcal per day), and one study reported higher (~2,400 kcal per day) values for daily EI (45). These variable findings may be due to differences in age and experience level (e.g., pre-professional vs. professional) of ballet dancers, as well as methodological limitations related to recording EI (37). In this regard, ballet dancers previously under-reported EI by 21% when using self-reported food diaries compared to EI values calculated using doubly labeled water methodology (46). Nonetheless, the combined method of weighed food diaries and dietary recall interview techniques, as utilized in this study, is known to minimize errors of measurement related to participant compliance and motivation and has previously been demonstrated to result in good agreement with actual dietary intake (31, 32). Using this combined approach, we reveal that our vocational ballet students recorded an EI insufficient to meet their energy requirements during training. Moreover, 35% of participants reported an EI of <1,800 kcal·day⁻¹. Consistent with this notion, it has been proposed that an EI <1,800 kcal·day⁻¹ is insufficient for females athletes during intense training to achieve adequate nutrition and energy for optimal health and performance (47).

The likelihood of an individual exhibiting a nutrient deficiency is increased with a low EI. To our knowledge, no consensus guidelines exist regarding recommended nutrient intakes for dance populations, although general nutritional

TABLE 3 | Dietary intake of pre-professional ballet dancers on weekdays, weekend days, and for the entire 7-day period.

	7-day period	Weekdays	Weekend days	P-value
Energy intake (kcal·day ⁻¹)	2,002 ± 415	1,979 ± 470	2,058 ± 589	0.594
Energy intake (kcal·kg·day ⁻¹)	37.0 ± 8.0	36.7 ± 9.4	37.8 ± 10.3	0.679
Carbohydrate (g·day ⁻¹)	262.8 ± 54.6	263.4 ± 66.4	261.2 ± 63.6	0.904
Carbohydrate (g·kg ⁻¹ ·day ⁻¹)	4.9 ± 1.1	4.9 ± 1.3	4.8 ± 1.1	0.804
Carbohydrate (%)	53.4 ± 4.0	53.6 ± 4.2	52.8 ± 6.4	0.595
Protein (g·day ⁻¹)	65.8 ± 12.3	65.5 ± 15.1	66.4 ± 17.6	0.857
Protein (g·kg ⁻¹ ·day ⁻¹)	1.2 ± 0.2	1.2 ± 0.3	1.2 ± 0.3	0.841
Protein (%)	13.9 ± 2.6	14.1 ± 3.1	13.5 ± 3.2	0.527
Fat (g·day ⁻¹)	74.7 ± 21.8	73.4 ± 22.5	77.9 ± 32.0	0.501
Fat (g·kg ⁻¹ ·day ⁻¹)	1.4 ± 0.4	1.4 ± 0.4	1.4 ± 0.6	0.563
Fat (%)	32.7 ± 5.0	32.6 ± 4.8	33.0 ± 6.9	0.791
Fiber (g·day ⁻¹)	30.1 ± 12.1	31.8 ± 13.1	26.0 ± 11.0	0.002*
Fluids (ml·day ⁻¹)	1,649 ± 488	1,768 ± 521	1,350 ± 472	0.000*

Values are means ± SD (*n* = 20). *P*-values refer to the comparison between weekdays and weekend days, *denotes significant difference (*P* < 0.050) between weekdays and weekend days.

TABLE 4 | Prevalence of factors associated with RED-S in vocational female ballet students.

	Total	0 Factors	1 Factor	2 Factors	3 Factors	4 Factors	5 Factors
Number of participants	20 (100%)	4 (20%)	6 (30%)	6 (30%)	2 (10%)	2 (10%)	0 (0%)
Menstrual dysfunctions	8 (40%)	0	0	4	2	2	0
LEAF-Q score ≥ 8	13 (65%)	0	3	6	2	2	0
BMD Z-score ≤ -1	0 (0%)	0	0	0	0	0	0
<85% expected body weight	4 (20%)	0	2	0	0	2	0
EI < 1,800 kcal·day ⁻¹	7 (35%)	0	1	2	2	2	0

LEAF-Q, Low Energy Availability in Females Questionnaire; BMD, bone mineral density; EI, energy intake.

recommendations have been published (48). In the present study, dietary carbohydrate and protein intakes were consistent with recommendations for skill-based adolescent athletes (21). With regards to dietary protein guidelines, protein intakes $\sim 1.8 \text{ g}\cdot\text{kg}\cdot\text{day}^{-1}$ divided evenly between meal servings are increasingly recommended during periods of energy restriction with the basis to offset the loss of muscle mass during weight loss (49). Hence, it could be argued that our ballet students successfully achieved their protein requirement, but not necessarily context-specific protein recommendations. In contrast, and consistent with previous findings in dance students (10, 22, 42), participants in the present study met dietary fat and fiber recommendations of $<30\%$ of total EI and $25\text{--}35 \text{ g}\cdot\text{day}^{-1}$, respectively (6). We acknowledge that our dietary assessments did not include micronutrient intakes. However, we did measure blood 25(OH)D concentrations as a biomarker of vitamin D status which also is influenced by sunlight exposure. This analysis revealed a blood 25(OH)D concentration of $\sim 60 \text{ nmol}\cdot\text{L}^{-1}$ in our ballet students which is lower than previous values reported in young ballet students from New Zealand ($\sim 75 \text{ nmol}\cdot\text{L}^{-1}$) (42). While 55% of participants met the vitamin D recommendation of $\geq 50 \text{ nmol}\cdot\text{L}^{-1}$ (21) in the month of November, the northern latitude and indoor training characteristic of our cohort may place our cohort at risk of vitamin D insufficiency/deficiency, during both summer and winter months, due to reduced sun exposure (50). Although, no other clinical marker of nutrient status was assessed, we found that micronutrient supplement use was common practice among our vocational ballet students.

The desire to reduce BM or fat mass can lead to unhealthy or misguided dietary restraint in elite environments (3). Nevertheless, based on eating behavior results from the TFEQ (29), the motivation behind the insufficient EI in our vocational ballet students was unclear. Consistent with previous observations in teenagers and young adults (51), our participants recorded a degree of expression for cognitive restraint (33%) and emotional eating (44%). In contrast, our vocational ballet students recorded markedly higher values for behaviors of uncontrolled eating (49%) compared to values recorded by the control group in the same previous study (35%) (48). These observations suggest that our participants were often inadvertently under-eating, and compensated for a decreased EI by uncontrolled episodes of eating. Previous research highlights an increased risk of disordered eating among dancers (8, 18, 19) and athletes (2), when body physique is important for performance and appearance. Regardless of the reason behind a decreased EI, individuals may not be aware of the detrimental consequences of such behaviors and would benefit from early interaction with a professional (e.g., sports dietitian) that can enhance dietary practices and advice on how to achieve body physique goals in a safe and sustainable manner (16).

A mismatch between EI and EEE can occur both in the presence and absence of disordered eating/eating disorders and can lead to low EA ($<30 \text{ kcal}\cdot\text{kg FFM}\cdot\text{day}^{-1}$) (3). EA levels of our vocational female ballet students was $\sim 40 \text{ kcal}\cdot\text{kg FFM}\cdot\text{day}^{-1}$. Although this EA level represents a reduced EA ($30\text{--}45 \text{ kcal}\cdot\text{kg FFM}\cdot\text{day}^{-1}$) (16), it exceeds values previously recorded in pre-professional contemporary (21) and ballet (10) dancers, as well as

professional ballet dancers (8, 19). The discrepancy in EA levels between studies may be due, at least in part, to methodological differences and limitations in estimating EA (16). In fact, recent work by Burke et al. (16) highlights the pitfalls of estimating EA and the lack of clear guidelines for the calculation of EA in free-living conditions, including the methods used to measure each component of the EA equation (i.e., EI, EEE, and FFM). With due consideration of these challenges, we estimated EA using rigorous methodology to determine each of these components. However, we acknowledge that a snapshot estimation of EA may not provide an accurate assessment of the health and true energy status of the individual (16). In this regard, field studies have failed to detect associations between estimated EA and objective measures of disrupted metabolic hormones and MD (16). In the present study, we failed to observe associations between EA and self-reported menstrual dysfunctions and physiological symptoms of low EA assessed by the LEAF-Q.

Menstrual irregularities are a common symptom of RED-S, and low EA is considered the primary cause of functional hypothalamic amenorrhea (3). In the present study, menstrual dysfunctions were prevalent in vocational female ballet students, whereby 40% of participants self-reported MD, where 25% reported secondary amenorrhea and 15% reported oligomenorrhea. Previous research reported high prevalence rates (20–40%) of secondary amenorrhea in professional ballet dancers, compared to a lower prevalence (0–4%) in controls (7, 8). We conceivably underestimated the prevalence of MD since subclinical MD were not assessed and hormonal contraceptives may have masked the potential presence of MD in five participants. Moreover, young females with a gynecological age <14 years may have increased sensitivity to low EA effects on luteinising hormone pulsatility, leading to MD (52). However, in this study vocational female ballet students self-reported MD, thereby the true cause of these disturbances in our cohort is not clear. The LEAF-Q (17) has previously been recommended to identify females at risk of low EA or RED-S (16) and is a validated screening tool whereby individuals self-report physiological symptoms of low EA (17). According to LEAF-Q results, we identified that 65% of our participants were at risk of RED-S with a score ≥ 8 . This prevalence rate is higher than recently reported in professional ballet dancers (9), whereby 40% of dancers were at risk.

Despite the fact that BMI is not a true measure of body composition, it is often used as an indicator of chronic low EA (3). Using BMI-for-age growth charts, 20% of participants in our cohort were below the 5th percentile and were classified as underweight ($<85\%$ of expected body weight). In comparison, a recent study classified 50% of professional ballet dancers as underweight ($\text{BMI} < 18.5 \text{ kg}\cdot\text{m}^{-2}$) (9). These combined observations are not consistent with previous findings by Wyon et al. (1) that reported a higher BMI in professional ballet dancers compared to young elite ballet students (1). Bone health, including BMD, bone microarchitecture, and bone turnover markers also are known to be impaired with low EA (3). Nevertheless, the overall BMD ($Z\text{-score } 1.145 \pm 0.930 \text{ SD}$) among our vocational female ballet students, consistent with previous

studies in professional ballet dancers (9, 13), was within normal range, and none of our participants reported low BMD (Z -score ≤ -1). These data suggest that weight bearing ballet-specific training may be protective for bone health, despite the presence of MD and the negative effect of low EA (14). Importantly, optimal bone mineral accrual during adolescence is key to ensure an adequate peak bone mass and improve bone health later in life (21). In the present study, overall, 80% of vocational ballet students reported ≥ 1 factors related to RED-S, where 60% may be slightly at risk (1 or 2 factors) and 20% at higher risk (3–4 factors). Therefore, our data support the relevance of monitoring symptoms of RED-S when screening for low EA in at-risk populations.

Due to metabolic adaptations, weight stability and EB can occur in cases of low EA (16). However, since we did not directly measure RMR, it is unclear whether our vocational ballet students experienced impaired metabolic function. Overall, we observed an ~ 0.5 kg decline in BM over the study period, which is consistent with the observation of a negative EB (~ 308 kcal·day $^{-1}$). We acknowledge that this reduction in BM is significant given the low BM of our participants (~ 54 kg), however contend that this energy deficit and the subsequent BM reduction may not be sustained long-term. In this regard, follow up studies that measure dietary intake and energy expenditure over prolonged (e.g., 4–6 weeks) time periods are warranted in dancers. On the other hand, energy needs for growth also increase the energy demands of young individuals (21). Furthermore, dietary patterns observed in our ballet students such as a high intake of fiber, caffeine, and low energy density food/drinks, and poor energy distribution throughout the day may exacerbate the negative effects of low EA (3). Specifically, within-day periods with energy deficits >300 kcal $^{-1}$ are associated with metabolic and endocrine alterations in female athletes, including MD (53). In the present study, although we did not estimate within-day EB, 9 of 18 participants reported an overall energy deficit >300 kcal·day $^{-1}$ and patterns of skipping meals were anecdotally observed among some participants.

This descriptive study in vocational ballet students has several strengths, including the novel and rigorous method of combining self-reported weighed food diaries and 24-h dietary recall interviews to assess dietary intake in parallel with the measurement of energy expenditure over a 7-day period. However, several limitations must be highlighted with regards to these two measurements. First, field techniques such as food records and accelerometry may both underestimate

and overestimate true values of dietary intakes and energy expenditure (37), and a snapshot assessment may not accurately represent an individual's long-term energy status (16). Moreover, we estimated RMR using Harris-Benedict equation, which has previously been reported to better estimate RMR in ballet dancers compared to controls (8). Second, recent findings in professional ballet dancers suggest the Cunningham equation is more suitable to detect female dancers with impaired metabolic function (9). Therefore, it is possible that we overestimated RMR for participants with MD and/or chronic metabolic adaptations. Finally, menstrual cycle phase on entering the study differed among participants, which may have affected individual EI and TEE, and BM (54). Therefore, including measurements of reproductive hormones and RMR would have helped identifying menstrual phase and status, and metabolic adaptations in our vocational female ballet students, respectively.

CONCLUSIONS

In the present study, the failure of vocational female ballet students to meet their estimated energy requirements was due to an inability to plan weekly energy intakes to meet higher energy requirements during training weekdays. Our findings also suggest that vocational female ballet students may be at risk of RED-S, with reduced EA (30–45 kcal·kg FFM·day $^{-1}$) and high LEAF-Q scores. Taken together, these data support the recommendation to screen elite young ballet students for factors associated with RED-S and tailor education programs to inform energy and nutrition requirements for health and training in this “at-risk” population.

AUTHOR CONTRIBUTIONS

The study was designed by RC, DL, LR, KL, MB, and OW. Data were collected by RC and AL. Analyzed by RC, AL, FS, and JD. Data interpretation and manuscript preparation were undertaken by RC, ES, MB, and OW.

ACKNOWLEDGMENTS

We wish to thank The Royal Conservatoire of Scotland for their collaboration with the study. Finally, we wish to thank all the participants for volunteering for the study.

REFERENCES

- Wyon MA, Hutchings KM, Wells A, Nevill AM. Body mass index, nutritional knowledge, and eating behaviors in elite student and professional ballet dancers. *Clin J Sport Med.* (2014) 24:390–6. doi: 10.1097/JSM.0000000000000054
- Sundgot-Borgen J, Meyer NL, Lohman TG, Ackland TR, Maughan RJ, Stewart AD, et al. How to minimise the health risks to athletes who compete in weight-sensitive sports review and position statement on behalf of the *ad hoc* research working group on body composition, health and performance, under the auspices of the IOC Medical Commission. *Br J Sports Med.* (2013) 47:1012–22. doi: 10.1136/bjsports-2013-092966
- Mountjoy M, Sundgot-Borgen J, Burke LM, Ackerman KE, Blauwet C, Constantini N, et al. International Olympic Committee (IOC) Consensus Statement on Relative Energy Deficiency in Sport (RED-S): 2018 update. *Int J Sport Nut Exerc Metab.* (2018) 28:316–3. doi: 10.1123/ijsem.2018-0136
- Nattiv A, Loucks AB, Manore MM, Sanborn CF, Sundgot-Borgen J, Warren MP. American College of Sports Medicine position stand: the female athlete triad. *Med Sci Sports Exerc.* (2007) 39:1867–82. doi: 10.1249/mss.0b013e318149f111

5. Abraham SF, Beumont PJ, Fraser IS, Llewellyn-Jones DE. Body weight, exercise and menstrual status among ballet dancers in training. *Br J Obstet Gynaecol.* (1982) 89:507–10.
6. Myburgh KH, Berman C, Novick I, Noakes TD, Lambert EV. Decreased resting metabolic rate in ballet dancers with menstrual irregularity. *Int J Sport Nutr.* (1999) 9:285–94. doi: 10.1123/ijns.9.3.285
7. Kaufman BA, Warren MP, Dominguez JE, Wang J, Heymsfield SB, Pierson RN. Bone density and amenorrhea in ballet dancers are related to a decreased resting metabolic rate and lower leptin levels. *J Clin Endocrinol Metab.* (2002) 87:2777–83. doi: 10.1210/jcem.87.6.8565
8. Doyle-Lucas AF, Akers JD, Davy BM. Energetic efficiency, menstrual irregularity, and bone mineral density in elite professional female ballet dancers. *J Dance Med Sci.* (2010) 14:146–54.
9. Staal S, Sjödin A, Fahrenholtz I, Bonnesen K, Melin A. Low RMR ratio as a surrogate marker for energy deficiency, the choice of predictive equation vital for correctly identifying male and female ballet dancers at risk. *Int J Sport Nutr Exerc Metab.* (2018) 28:412–8. doi: 10.1123/ijns.2017-0327
10. Łagowska K, Kapczuk K. Testosterone concentrations in female athletes and ballet dancers with menstrual disorders. *Eur J Sport Sci.* (2016) 16:490–7. doi: 10.1080/17461391.2015.1034786
11. Donoso M, Muñoz-Calvo M, Barrios V, Garrido G, Hawkins F, Argente J. Increased circulating adiponectin levels and decreased leptin/soluble leptin receptor ratio throughout puberty in female ballet dancers: association with body composition and the delay in puberty. *Eur J Endocrinol.* (2010) 162:905–11. doi: 10.1530/EJE-09-0874
12. Warren MP, Brooks-Gunn J, Fox RP, Holderness CC, Hyle EP, Hamilton WG. Osteopenia in exercise associated amenorrhea using ballet dancers as a model: a longitudinal study. *J Clin Endocrinol Metab.* (2002) 87:3162–8. doi: 10.1210/jcem.87.7.8637
13. Amorim T, Wyon M, Maia J, Machado JC, Marques F, Metsios GS, et al. Prevalence of low bone mineral density in female dancers. *Sports Med.* (2015) 45:257–68. doi: 10.1007/s40279-014-0268-5
14. Amorim T, Koutedakis Y, Nevill A, Wyon M, Maia J, Machado JC, et al. Bone mineral density in vocational and professional ballet dancers. *Osteoporos Int.* (2017) 28:2903–12. doi: 10.1007/s00198-017-4130-0
15. Loucks AB, Kiens B, Wright HH. Energy availability in athletes. *Journal of Sports Sci.* (2011) 29(Suppl. 1):S7–15. doi: 10.1080/02640414.2011.588958
16. Burke LM, Lundy B, Fahrenholtz IL, Melin AK. Pitfalls of conducting and interpreting estimates of energy availability in free-living athletes. *Int J Sport Nutr Exerc Metab.* (2018) 28:350–63. doi: 10.1123/ijns.2018-0142
17. Melin A, Tornberg AB, Skouby S, Faber J, Ritz C, Sjödin A, Sundgot-Borgen J. The LEAF questionnaire: a screening tool for the identification of female athletes at risk for the female athlete triad. *Br J Sports Med.* (2014) 48:540–5. doi: 10.1136/bjsports-2013-093240
18. Hincapié CA, Cassidy JD. Disordered eating, menstrual disturbances, and low bone mineral density in dancers: a systematic review. *Arch Phys Med Rehabil.* (2010) 91:1777–89. doi: 10.1016/j.apmr.2010.07.230
19. Hoch AZ, Papanek P, Szabo A, Widlansky ME, Schimke JE, Gutterman DD. Association between the female athlete triad and endothelial dysfunction in dancers. *Clin J Sport Med.* (2011) 21:119–25. doi: 10.1097/JSM.0b013e3182042a9a
20. Chartrand D, Chatfield SJ. A critical review of the prevalence of secondary amenorrhea in ballet dancers. *J Dance Med Sci.* (2005) 9:74–80.
21. Desbrow B, McCormack J, Burke LM, Cox GR, Fallon K, Hislop M, et al. Sports Dietitians Australia position statement: sports nutrition for the adolescent athlete. *Int J Sport Nutr Exerc Metab.* (2014) 24:570–84. doi: 10.1123/ijns.2014-0031
22. Brown MA, Howatson G, Quin E, Redding E, Stevenson EJ. Energy intake and energy expenditure of pre-professional female contemporary dancers. *PLoS ONE* (2017) 12:e0171998. doi: 10.1371/journal.pone.0171998
23. Hirsch NM, Eisenmann JC, Moore SJ, Winnail SD, Stalder MA. Energy balance and physical activity patterns in university ballet dancers. *J Dance Med Sci.* (2003) 7:73–9.
24. Sygo J, Coates AM, Sesbreno E, Mountjoy ML, Burr JF. Prevalence of indicators of low energy availability in elite female sprinters. *Int J Sport Nutr Exerc Metab.* (2018) 28:490–6. doi: 10.1123/ijns.2017-0397
25. Kuczmarski RJ. 2000 CDC growth charts for the United States; methods and development. *Vital Health Stat.* (2002) 11:1–190.
26. Nana A, Slater GJ, Hopkins WG, Halson SL, Martin DT, West NP, Burke LM. Importance of standardized DXA protocol for assessing physique changes in athletes. *Int J Sport Nutr Exerc Metab.* (2016) 26:259–67. doi: 10.1123/ijns.2013-0111
27. Rodriguez-Sanchez N, Galloway SD. Errors in dual energy x-ray absorptiometry estimation of body composition induced by hypohydration. *Int J Sport Nutr Exerc Metab.* (2015) 25:60–8. doi: 10.1123/ijns.2014-0067
28. Laws H. *Fit to Dance 2—Report of the Second National Inquiry into Dancers' Health and Injury in the UK.* London: Newgate Press (2005).
29. Karlsson J, Persson LO, Sjöström L, Sullivan M. Psychometric properties and factor structure of the Three-Factor Eating Questionnaire (TFEQ) in obese men and women. Results from the Swedish Obese Subjects (SOS) study. *Int J Obes Relat Metab Disord.* (2000) 24:1715–25.
30. Anglé S, Engblom J, Eriksson T, Kautiainen S, Saha M-T, Lindfors P, et al. Three factor eating questionnaire-R18 as a measure of cognitive restraint, uncontrolled eating and emotional eating in a sample of young Finnish females. *Int J Behav Nutr Phys Act.* (2009) 6:41. doi: 10.1186/1479-5868-6-41
31. TRumbold PLS, St Clair Gibson A, Stevenson E, Dodd-Reynolds CJ. Agreement between two methods of dietary data collection in female adolescent netball players. *Appetite* (2011) 57:443–7. doi: 10.1016/j.appet.2011.06.013
32. Briggs MA, Rumbold PL, Cockburn E, Russell M, Stevenson EJ. Agreement between two methods of dietary data collection in male adolescent academy-level soccer players. *Nutrients* (2015) 7:5948–60. doi: 10.3390/nu7075262
33. Ashley JM, Bovee VH. Dietary intake: recording and analyzing. In: Andersen RE, editor. *Obesity: Etiology, Assessment, Treatment and Prevention.* Champaign, IL: Human Kinetics (2007). p. 99–110.
34. Harris JA, Benedict FG. A Biometric Study of Human Basal Metabolism. *Proc Natl Acad Sci USA.* (1918) 4:370–3.
35. Sasaki JE, John D, Freedson PS. Validation and comparison of ActiGraph activity monitors. *J Sci Med Sport* (2011) 14:411–6. doi: 10.1016/j.jsams.2011.04.003
36. Ainsworth BE, Haskell WL, Whitt MC, Irwin ML, Swartz AM, Strath SJ, et al. Compendium of physical activities: an update of activity codes and MET intensities. *Med Sci Sports Exerc.* (2000) 32:S498–516.
37. Burke L, Deakin V. *Clinical Sports Nutrition.* 5th ed. North Ryde: McGraw-Hill Education (2015).
38. Deutz RC, Benardot D, Martin DE, Cody MM. Relationship between energy deficits and body composition in elite female gymnasts and runners. *Med Sci Sports Exerc.* (2000) 32:659–68.
39. Hoeller U, Baur M, Roos FF, Brennan L, Daniel H, Fallaize R, et al. Application of dried blood spots to determine vitamin D status in a large nutritional study with unsupervised sampling: the Food4Me project. *Br J Nutr.* (2016) 115:202–11. doi: 10.1017/S0007114515004298
40. Kostorzewa-Tarnowska A, Jeszka J. Energy balance and body composition factors in adolescent ballet school students. *Pol J Food Nutr Sci.* (2003) 12:71–5.
41. Beck S, Redding E, Wyon MA. Methodological considerations for documenting the energy demand of dance activity: a review. *Front Psychol.* (2015) 6:568. doi: 10.3389/fpsyg.2015.00568
42. Beck KL, Mitchell S, Fokkett A, Conlon CA, von Hurst PR. Dietary intake, anthropometric characteristics, and iron and vitamin D Status of female adolescent ballet dancers living in New Zealand. *Int J Sport Nutr Exerc Metab.* (2015) 25:335–43. doi: 10.1123/ijns.2014-0089
43. Dahlström M, Jansson E, Nordevang E, Kaijser L. Discrepancy between estimated energy intake and requirement in female dancers. *Clin Physiol.* (1990) 10:11–25. doi: 10.1111/j.1475-097X.1990.tb00080.x
44. Bonbright JM. The nutritional status of female ballet dancers 15–18 years of age. *Dance Res J.* (1989) 21:9–14. doi: 10.2307/1478626
45. Malavolti M, Poli M, Pietrobelli A, Dugoni M, Trunfio O, Battistini NC. Body composition and nutritional habits in professional ballet dancers. *Int J Body Compos Res.* (2005) 3:63–8.
46. Hill RJ, Davies PS. The validity of self-reported energy intake as determined using the doubly labelled water technique. *Br J Nutr.* (2001) 85:415–30. doi: 10.1079/BJN2000281
47. Manore MM. Dietary recommendations and athletic menstrual dysfunction. *Sports Med.* (2002) 32:887–901. doi: 10.2165/00007256-200232140-00002

48. Sousa M, Carvalho P, Moreira P, Teixeira VH. Nutrition and nutritional issues for dancers. *Med Probl Perform Art.* (2013) 28:119–23.
49. Phillips SM, Van Loon LJ. Dietary protein for athletes: from requirements to optimum adaptation. *J Sports Sci.* (2011) 29(Suppl. 1):S29–38. doi: 10.1080/02640414.2011.619204
50. Wolman R, Wyon MA, Koutedakis Y, Nevill AM, Eastell R, Allen N. Vitamin D status in professional ballet dancers: winter vs. summer. *J Sci Med Sport.* (2013) 16:388–91. doi: 10.1016/j.jsams.2012.12.010
51. De Lauzon B, Romon M, Deschamps V, Lafay L, Borys JM, Karlsson J, et al. The Three-Factor Eating Questionnaire-R18 is able to distinguish among different eating patterns in a general population. *J Nutr.* (2004) 134:2372–80. doi: 10.1093/jn/134.9.2372
52. Loucks AB. The response of luteinizing hormone pulsatility to 5 days of low energy availability disappears by 14 years of gynecological age. *J Clin Endocrinol Metab.* (2006) 91:3158–64. doi: 10.1210/jc.2006-0570
53. Fahrenholtz IL, Sjödin A, Benardot D, Tornberg ÅB, Skouby S, Faber J, et al. Within-day energy deficiency and reproductive function in female endurance athletes. *Scand J Med Sci Sports* (2018) 28:1139–46. doi: 10.1111/sms.13030
54. Davidsen L, Vistisen B, Astrup A. Impact of the menstrual cycle on determinants of energy balance: a putative role in weight loss attempts. *Int J Obes.* (2007) 31:1777–85. doi: 10.1038/sj.ijo.0803699

Conflict of Interest Statement: The authors declare that the research was conducted in the absence of any commercial or financial relationships that could be construed as a potential conflict of interest.

Copyright © 2019 Civil, Lamb, Loosmore, Ross, Livingstone, Strachan, Dick, Stevenson, Brown and Witard. This is an open-access article distributed under the terms of the Creative Commons Attribution License (CC BY). The use, distribution or reproduction in other forums is permitted, provided the original author(s) and the copyright owner(s) are credited and that the original publication in this journal is cited, in accordance with accepted academic practice. No use, distribution or reproduction is permitted which does not comply with these terms.