



Deciphering the Functioning of Microbial Communities: Shedding Light on the Critical Steps in Metaproteomics

Augustin Geron^{1,2}, Johannes Werner³, Ruddy Wattiez², Philippe Lebaron⁴ and Sabine Matallana-Surget^{1*}

¹ Division of Biological and Environmental Sciences, Faculty of Natural Sciences, University of Stirling, Stirling, United Kingdom, ² Department of Proteomic and Microbiology, University of Mons, Mons, Belgium, ³ Department of Biological Oceanography, Leibniz Institute for Baltic Sea Research, Rostock, Germany, ⁴ Sorbonne Universités, UPMC Université Paris 06, USR 3579, LBBM, Observatoire Océanologique, Banyuls-sur-Mer, France

OPEN ACCESS

Edited by:

Ramiro Logares,
Superior Council of Scientific
Investigations, Spain

Reviewed by:

Nico Jehmlich,
Helmholtz Centre for Environmental
Research (UFZ), Germany
Magnus Øverlie Arntzen,
Norwegian University of Life Sciences,
Norway

*Correspondence:

Sabine Matallana-Surget
sabine.matallanasurget@stir.ac.uk

Specialty section:

This article was submitted to
Aquatic Microbiology,
a section of the journal
Frontiers in Microbiology

Received: 15 July 2019

Accepted: 03 October 2019

Published: 24 October 2019

Citation:

Geron A, Werner J, Wattiez R,
Lebaron P and Matallana-Surget S
(2019) Deciphering the Functioning
of Microbial Communities: Shedding
Light on the Critical Steps
in Metaproteomics.
Front. Microbiol. 10:2395.
doi: 10.3389/fmicb.2019.02395

Unraveling the complex structure and functioning of microbial communities is essential to accurately predict the impact of perturbations and/or environmental changes. From all molecular tools available today to resolve the dynamics of microbial communities, metaproteomics stands out, allowing the establishment of phenotype–genotype linkages. Despite its rapid development, this technology has faced many technical challenges that still hamper its potential power. How to maximize the number of protein identification, improve quality of protein annotation, and provide reliable ecological interpretation are questions of immediate urgency. In our study, we used a robust metaproteomic workflow combining two protein fractionation approaches (gel-based versus gel-free) and four protein search databases derived from the same metagenome to analyze the same seawater sample. The resulting eight metaproteomes provided different outcomes in terms of (i) total protein numbers, (ii) taxonomic structures, and (iii) protein functions. The characterization and/or representativeness of numerous proteins from ecologically relevant taxa such as *Pelagibacterales*, *Rhodobacterales*, and *Synechococcales*, as well as crucial environmental processes, such as nutrient uptake, nitrogen assimilation, light harvesting, and oxidative stress response, were found to be particularly affected by the methodology. Our results provide clear evidences that the use of different protein search databases significantly alters the biological conclusions in both gel-free and gel-based approaches. Our findings emphasize the importance of diversifying the experimental workflow for a comprehensive metaproteomic study.

Keywords: metaproteomics, metagenomics, bioinformatics, mass spectrometry, microbial ecology

INTRODUCTION

Metaproteomics aims at characterizing the total proteins obtained from microbial communities (Wilmes and Bond, 2004) and, in association with metagenomics, unraveling the functional complexity of a given ecosystem (Franzosa et al., 2015). Since the first environmental metaproteomic study performed in the Chesapeake Bay (Kan et al., 2005), numerous investigations

were carried out in a variety of environments using descriptive, comparative, and/or quantitative approaches (Matallana-Surget et al., 2018). Comparative metaproteomics was often used to describe spatial and seasonal changes in aquatic ecosystems using (i) *in situ* (Morris et al., 2010; Teeling et al., 2012; Williams et al., 2012; Georges et al., 2014), (ii) mesocosms (Lacerda and Reardon, 2009; Bryson et al., 2016), or (iii) microcosms (Russo et al., 2016) approaches.

Metaproteomics on marine ecosystems is a rapidly expanding field that involves a series of challenging steps and critical decisions in its workflow (Wilmes et al., 2015; Heyer et al., 2017; Matallana-Surget et al., 2018; Saito et al., 2019). The marine metaproteomic workflow consists mainly of four steps: (i) sampling and protein extraction, (ii) protein separation, (iii) mass spectrometry, and (iv) protein identification/annotation (Wöhlbrand et al., 2013). Until now, standardized experimental protocols are still missing, leading to methodological inconsistencies and data interpretation biases across metaproteomic studies (Leary et al., 2013; Tanca et al., 2013; Timmins-Schiffman et al., 2017).

Protein identification strongly relies on both the quality of experimental mass spectra (MS) and the comprehensiveness of the protein search database (DB) (Wöhlbrand et al., 2013). Both gel-based (Wang et al., 2014) and shotgun gel-free (Morris et al., 2010; Saito et al., 2015) approaches have been used in metaproteomic analyses and both were found to be complementary (Matallana-Surget et al., 2018). Two main data sources are commonly used to construct protein search DB: public protein repositories, and/or metagenomic data (Heyer et al., 2017). Identifying proteins by searching against public protein repositories such as UniProtKB/SwissProt, UniProtKB/TrEMBL, UniRef, NCBI, or Ensembl is challenging because of the large size of these DBs, which increase search space and overestimate false discovery rate (FDR), thus decreasing the total number of identified proteins (Nesvizhskii, 2010; Jagtap et al., 2013; Tanca et al., 2013; Timmins-Schiffman et al., 2017). To address the issue of large size DB, different strategies were developed such as pseudo-metagenome approach (Heyer et al., 2017), partial searches against smaller sub-DB (Muth et al., 2015a; Tanca et al., 2016), or the two-round DB searching method (Jagtap et al., 2013). The two-round DB searching method consists in searching experimental MS against a refined database composed of the protein sequences identified in a preliminary error tolerant search, allowing significant increase in the total number of identified proteins. This strategy was extensively used in recent metaproteomics studies (Russo et al., 2016; Serrano-Villar et al., 2016; Deusch et al., 2017; Gallois et al., 2018). Regarding metagenomic data, both assembled (Teeling et al., 2012) and non-assembled (Herbst et al., 2016; Tanca et al., 2016) sequencing reads were used in metaproteomics for protein search DB creation. Skipping read assembly was shown to prevent information loss and potential noise introduction and led to higher protein identification yield (May et al., 2016).

Metaproteomic data analysis also involves taxonomic and functional annotation. Due to the protein inference issue (i.e., a same peptide can be found in homologous proteins), inaccurate protein annotations are commonly encountered

in metaproteomics (Herbst et al., 2016). To overcome this issue, protein identification tools such as Pro Group algorithm (Absciex, 2014), Prophane (Schneider et al., 2011), or MetaProteomeAnalyzer (Muth et al., 2015b) automatically group homologous protein sequences. In our study, we used the mPies tool (Werner et al., 2019), which uses sequence-based alignment to compute taxonomic consensus annotation on protein groups using last common ancestor (LCA) (Huson et al., 2016; Heyer et al., 2017). mPies also provides a novel consensus functional annotation using UniProt, that gives more accurate insights into the diversity of protein functions compared to former strategies mapping proteins on broader functional categories, such as KEGG (Kanehisa et al., 2018) or COGs (Galperin et al., 2015).

To what extent the methodology affects the metaproteome interpretation has already been studied in artificial microbial communities (Tanca et al., 2013) and gut microbiomes (Tanca et al., 2016; Rechenberger et al., 2019) but its impact on marine samples still remains poorly documented (Timmins-Schiffman et al., 2017). In this study, we used a robust experimental design comparing the combined effect of protein search DB choice and protein fractionation approach on the same sea surface sample. For this purpose, two sets of peptide spectra resulting from gel-based and gel-free approaches were searched against four DBs derived from the same raw metagenomic data. The resulting eight metaproteomes were quantitatively and qualitatively compared, demonstrating to which extent diversifying metaproteomic workflow allows the most comprehensive understanding of microbial communities dynamics.

MATERIALS AND METHODS

Sampling

Seawater samples ($n = 4$) were collected in summer (June 2014) at the SOLA station, located 500 m offshore of Banyuls-sur-Mer, in the Northwestern Mediterranean Sea (42° 49'N, 3° 15'W). Each sample consisted of 60 L of sea surface water, pre-filtered at 5 μ m and subsequently sequentially filtered through 0.8 and 0.2 μ m pore-sized filters (polyethersulfone membrane filters, PES, 142 mm, Millipore). Four independent sets of filters were obtained and flash frozen into liquid nitrogen before storage at -80°C .

Protein Isolation for Gel-Based and Gel-Free Approaches

A combination of different mechanical (sonication/freezing-thaw) and chemical (urea/thiourea containing buffers, acetone precipitation) extraction techniques were used on the filtered seawater samples to maximize the recovery of protein extracts from the filters. The 0.2 μ m filters were removed from their storage buffer and cut into quarters using aseptic procedures. Protein isolation was performed on four 0.2 μ m filters. The same protein isolation protocol was used for both gel-based and gel-free approaches. The filters were suspended in a lysis buffer containing 8 M urea/2 M thiourea, 10 mM HEPES, and 10 mM dithiothreitol (DTT). Filters were subjected to five freeze-thaw cycles in liquid N_2 to release cells from the membrane. Cells

were mechanically broken by sonication on ice (five cycles of 1 min with tubes on ice, amplitude 40%, 0.5 pulse rate) and subsequently centrifuged at $16,000 \times g$ at 4°C for 15 min. To remove particles that did not pellet during the centrifugation step, we filtered the protein suspension through a $0.22 \mu\text{m}$ syringe filter and transferred into a 3 kDa cutoff Amicon Ultra-15 filter unit (Millipore) for protein concentration. Proteins were precipitated with cold acetone overnight at -80°C , with an acetone/aqueous protein solution ratio of 4:1. Total protein concentration was determined by a Bradford assay, according to the Bio-Rad Protein Assay kit (Bio-Rad, Hertfordshire, United Kingdom) according to the manufacturer's instructions, with bovine γ -globulin as a protein standard. Protein samples were reduced with 25 mM DTT at 56°C for 30 min and alkylated with 50 mM iodoacetamide at room temperature for 30 min. For gel-free liquid chromatography tandem mass spectrometry analysis, a tryptic digestion (sequencing grade modified trypsin, Promega) was performed overnight at 37°C , with an enzyme/substrate ratio of 1:25.

Gel-Based Proteomics Approach

Protein isolates diluted in Laemmli buffer (2% SDS, 10% glycerol, 5% β -mercaptoethanol, 0.002% bromophenol blue, and 0.125 M Tris-HCl, pH 6.8) and sonicated in a water bath six times for 1 min at room temperature. After 1 min incubation at 90°C , the protein solutions were centrifuged at 13,000 rpm at room temperature for 15 min. The SDS-PAGE of the protein mixtures was conducted using 4–20% precast polyacrylamide mini-gels (Pierce). The protein bands were visualized with staining using the Imperial Protein Stain (Thermo) according to the manufacturer's instructions. The corresponding gel lane containing proteins was cut in 17 pieces of 1 mm each. Enzymatic digestion was performed by the addition of 10 μl modified sequencing grade trypsin (0.02 mg/ml) in 25 mM NH_4HCO_3 to each gel piece. The samples were placed for 15 min at 4°C and incubated overnight at 37°C . The reaction was stopped with 1 μl 5% (v/v) formic acid. Tryptic peptides were analyzed by liquid chromatography tandem mass spectrometry.

Liquid Chromatography Tandem Mass Spectrometry Analysis

Purified peptides from digested protein samples from gel-free and gel-based proteomics were identified using a label-free strategy on an UHPLC-HRMS platform composed of an Eksigent 2D liquid chromatograph and an AB SCIEX Triple TOF 5600. Peptides were separated on a 25 cm C18 column (Acclaim pepmap 100, $3 \mu\text{m}$, Dionex) by a linear acetonitrile (ACN) gradient [5–35% (v/v), in 15 or 120 min] in water containing 0.1% (v/v) formic acid at a flow rate of 300 nL min^{-1} . MS were acquired across 400–1,500 m/z in high-resolution mode (resolution $>35,000$) with 500 ms accumulation time. Six microliters of each fraction were loaded onto a pre-column (C18 Trap, $300 \mu\text{m i.d.} \times 5 \text{ mm}$, Dionex) using the Ultimate 3000 system delivering a flow rate of 20 $\mu\text{l/min}$ loading solvent [5% (v/v) ACN, 0.025% (v/v) TFA]. After a 10 min desalting step, the pre-column was switched online with the analytical column

($75 \mu\text{m i.d.} \times 15 \text{ cm}$ PepMap C18, Dionex) equilibrated in 96% solvent A [0.1% (v/v) formic acid in HPLC-grade water] and 4% solvent B [80% (v/v) ACN, 0.1% (v/v) formic acid in HPLC-grade water]. Peptides were eluted from the pre-column to the analytical column and then to the mass spectrometer with a gradient from 4 to 57% solvent B for 50 min and 57 to 90% solvent B for 10 min at a flow rate of $0.2 \mu\text{L min}^{-1}$ delivered by the Ultimate pump. Positive ions were generated by electrospray and the instrument was operated in a data-dependent acquisition mode described as follows: MS scan range: 300–1,500 m/z , maximum accumulation time: 200 ms, ICC target: 200,000. The top four most intense ions in the MS scan were selected for MS/MS in dynamic exclusion mode: ultrascan, absolute threshold: 75,000, relative threshold: 1%, excluded after spectrum count: 1, exclusion duration: 0.3 min, averaged spectra: 5, and ICC target: 200,000. Gel-based and gel-free metaproteomic data were submitted to iProX (Ma et al., 2018) (Project ID: IPX0001684000/PXD014582).

Databases Creation and Protein Identification

Protein searches were performed with ProteinPilot (ProteinPilot Software 5.0.1; Revision: 4895; Paragon Algorithm: 5.0.1.0.4874; AB SCIEX, Framingham, MA, United States) (Matrix Science, London, United Kingdom; v. 2.2). Paragon searches 34 were conducted using LC MS/MS Triple TOF 5600 System instrument settings. Other parameters used for the search were as follows: Sample Type: Identification, Cys alkylation: Iodoacetamide, Digestion: Trypsin, ID Focus: Biological Modifications and Amino acid substitutions, Search effort: Thorough ID, Detected Protein Threshold [Unused ProtScore (Conf)] $>: 0.05$ (10.0%).

Three DBs were created using the same metagenome (EMBL-EBI Project number: ERP009703, Ocean Sampling Day 2014, sample: OSD14_2014_06_2m_NPL022, run ID: ERR771073) (MiSeq Illumina Technology) and were generated with mPies v 0.9, our recently in house developed mPies program freely available at <https://github.com/johanneswerner/mPies/> (Supplementary Presentation 1; Werner et al., 2019). The three DBs were: (i) a non-assembled metagenome-derived DB (NAM-DB), (ii) an assembled metagenome-derived DB (AM-DB), and (iii) a taxonomy-derived DB (TAX-DB) (Table 1). Briefly, mPies first trimmed sequencing raw reads with Trimmomatic (Bolger et al., 2014). For NAM-DB, mPies directly predicted genes from trimmed sequencing reads with FragGeneScan (Rho et al., 2010). For AM-DB, mPies first assembled trimmed sequencing reads into contigs using metaSPAdes (Nurk et al., 2017) and subsequently called genes with Prodigal (Hyatt et al., 2010). For TAX-DB, mPies created a pseudo-metagenome using SingleM (Woodcroft, 2018) to predict operational taxonomic units from the trimmed sequencing reads and retrieved all the taxon IDs at genus level. All available proteomes for each taxon ID were subsequently downloaded from UniProtKB/TrEMBL. Duplicated protein sequences were removed with CD-HIT (Fu et al., 2012) from each DB.

Gel-based and gel-free MS/MS spectra were individually searched twice against the DBs. In the first-round search, full

size NAM-DB, AM-DB, and TAX-DB were used (**Table 1**). In the second-round search, each DB was restricted to the protein sequences identified in the first-round search. For both gel-free and gel-based approaches, the second round NAM-DB, AM-DB, and TAX-DB were merged and redundant protein sequences were removed, leading to two combined DBs (Comb-DBs), subsequently searched against gel-based and gel-free MS/MS spectra. Consequently, a total of eight metaproteomes obtained from four DBs: NAM-DB, AM-DB, TAX-DB, and Comb-DB were analyzed in this paper. A FDR threshold of 1%, calculated at the protein level, was used for each protein searches. Proteins identified with one single peptide were validated by manual inspection of the MS/MS spectra, ensuring that a series of at least five consecutive sequence-specific b- and y-type ions was observed.

Protein Annotation

Identified proteins were annotated using mPies. For taxonomic and functional annotation, mPies used Diamond (Buchfink et al., 2015) to align each identified protein sequences against the non-redundant NCBI DB and the UniProt DB (Swiss-Prot), respectively, and retrieved up to 20 best hits based on alignment score (>80). For taxonomic annotation, mPies returned the LCA among the best hits via MEGAN (bit score >80) (Huson et al., 2016). For functional annotation, mPies returned the most frequent protein name, with a consensus tolerance threshold $>80\%$ of similarity among the 20 best blast hits. Proteins annotated with a score below this threshold were manually validated. Manual validation was straightforward as the main reasons leading to low annotation score were often explained by the characterization of protein isoforms or different sub-units

of the same protein. To facilitate the understanding of this annotation step, examples were provided in **Supplementary Presentation 2**. Annotated proteins files are available in **Supplementary Data Sheet 1**.

RESULTS AND DISCUSSION

Database Choice Affects the Total Number of Protein Identification

The two-rounds search strategy commonly used in recent metaproteomics studies (Russo et al., 2016; Serrano-Villar et al., 2016; Deusch et al., 2017; Gallois et al., 2018) significantly reduced the size of protein search DBs, which in turn increased the total number of identified proteins with both AM-DB and NAM-DB (**Table 1**). Overall, the total number of identified proteins was found to be consistent with other metaproteomics studies conducted in marine oligotrophic waters (Morris et al., 2002; Sowell et al., 2009; Williams et al., 2012, 2013; Dong et al., 2014). NAM-DB led to greater protein identifications (gel-based: 714, gel-free: 1,131) than AM-DB (gel-based: 277 and gel-free: 549) and TAX-DB (gel-based: 434 and gel-free: 464) for both proteomics approaches. Comb-DB gave comparable results than NAM-DB in both approaches (gel-based: 700 and gel-free: 1,048). In AM-DB approach, the assembly process involved the removal of reads that cannot be assembled into longer contigs, leading to loss of gene fragments and consequently fewer identified proteins (Cantarel et al., 2011). As high proportions of prokaryotic genomes are protein-coding, gene fragments can directly be predicted from non-assembled sequencing reads (Koonin, 2009). TAX-DB suffered from a reduction of protein detection sensitivity due to its large size in the first round

TABLE 1 | Two-round search performances obtained for each methodology.

	Database	Number of proteins in database	Number of peptide spectra identified ^a	Coverage of peptide spectra identified (%)	Number of distinct peptides identified ^a	Number of proteins after validation ^{a,b}
First-round searches						
Gel-free	AM-DB	64,613	24,684	7.8	3,237	347
	NAM-DB	462,821	35,430	11.1	4,295	834
	TAX-DB	13,426,277	10,626	3.3	1,624	607
Gel-based	AM-DB	64,613	2,066	24.7	1,408	201
	NAM-DB	462,821	2,584	30.9	1,849	652
	TAX-DB	13,426,277	2,304	27.5	1,526	496
Second-round searches						
Gel-free	AM-DB	782	42,831	13.4	8,487	549
	NAM-DB	4,277	57,840	18.2	9,113	1,131
	TAX-DB	18,480	31,700	10.0	4,497	464
	Comb-DB	23,405	56,530	17.7	8,273	1,048
Gel-based	AM-DB	377	2,619	31.3	1,815	277
	NAM-DB	3,080	2,897	34.6	2,034	714
	TAX-DB	19,036	2,951	35.3	1,777	434
	Comb-DB	22,493	3,684	44.0	2,244	700

^aValues comprised in 95% confidence interval. ^bValues at 1% global FDR and after manual validation for proteins identified with one peptide. Searching parameters are provided in the section "Materials and Methods."

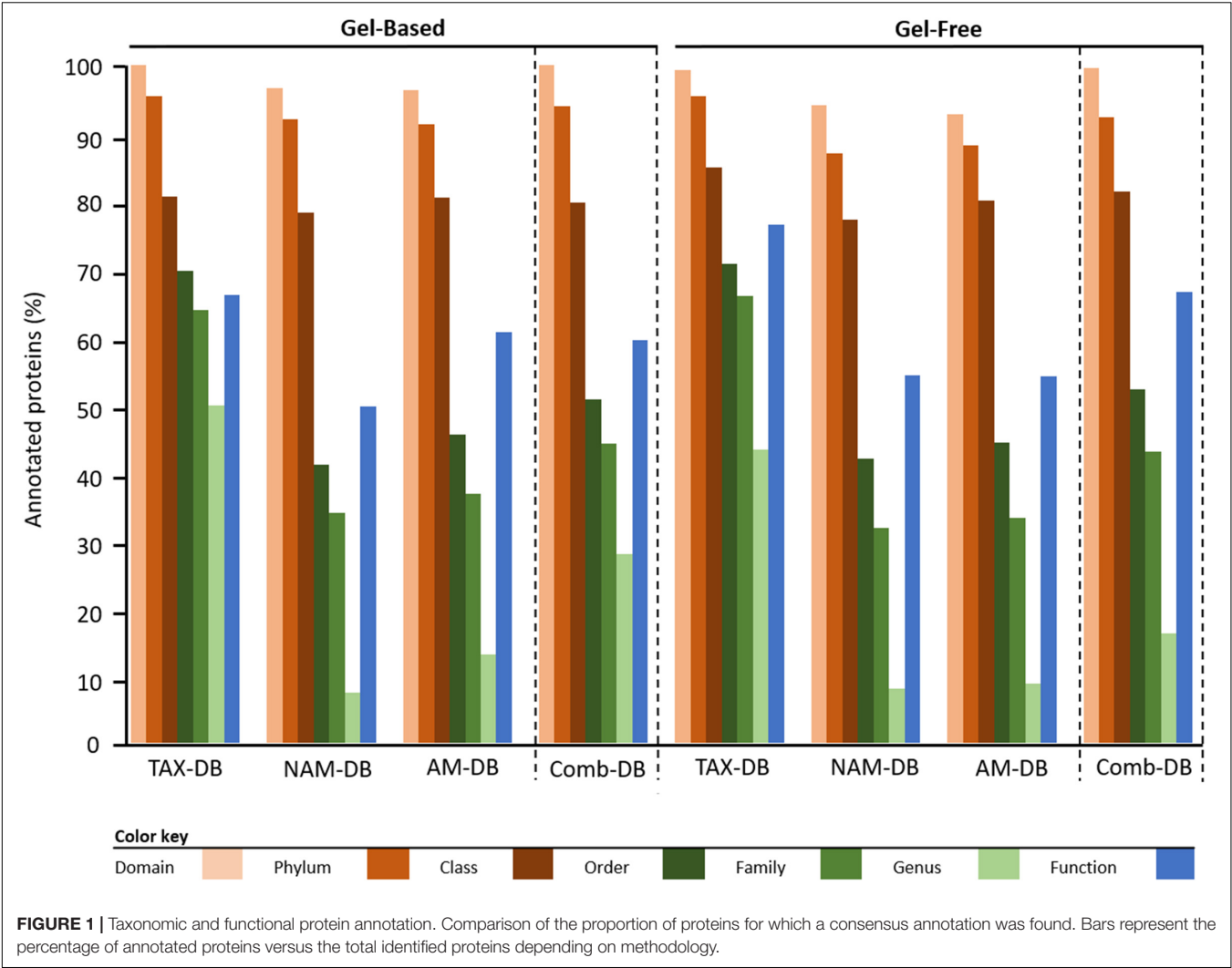


TABLE 2 | Comparison of the distribution of proteins assigned at phylum and class levels for each methodology.

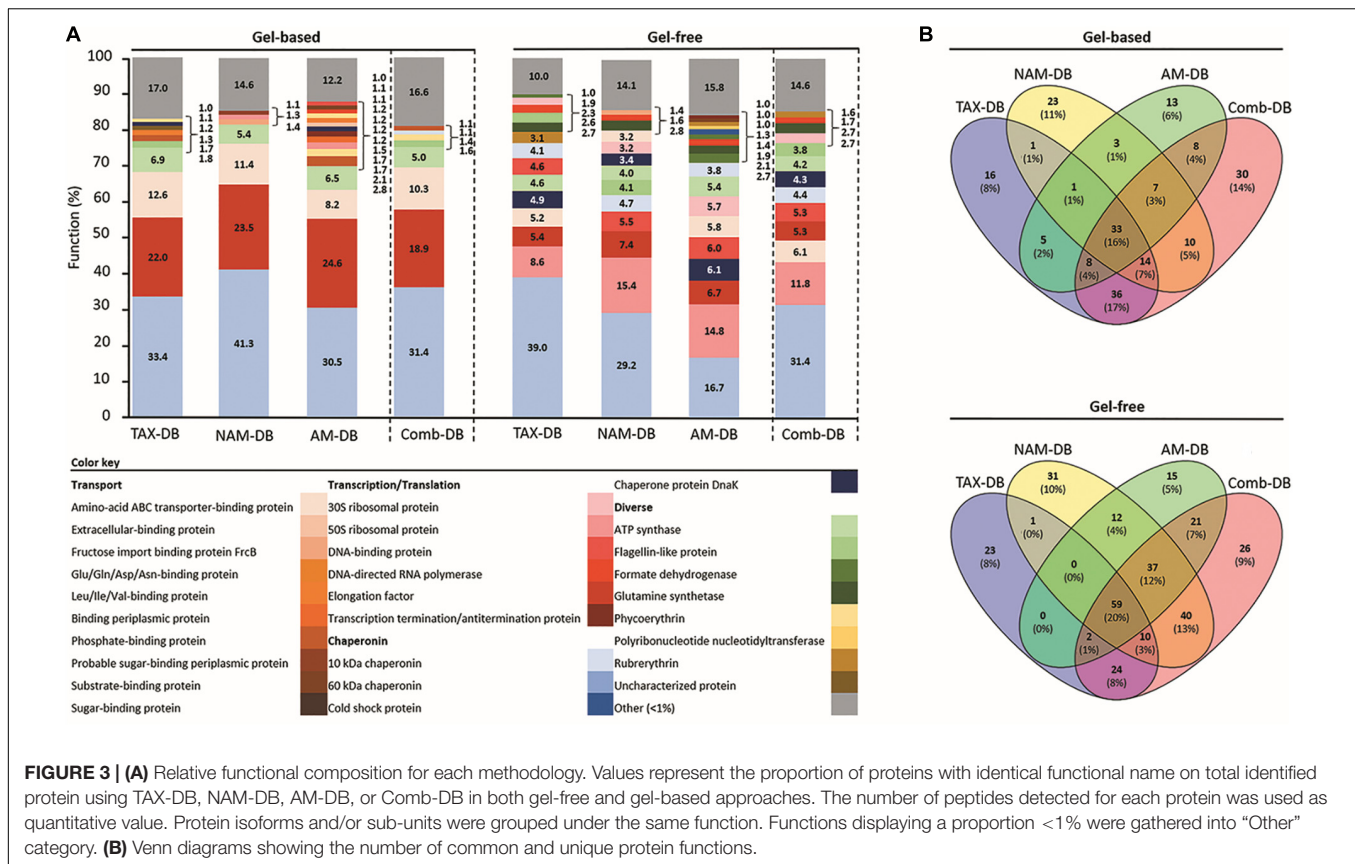
	Gel-based				Gel-free			
	TAX-DB	NAM-DB	AM-DB	Comb-DB	TAX-DB	NAM-DB	AM-DB	Comb-DB
Phylum								
Proteobacteria	87.2	92.7	95.2	89.8	87.6	92.9	91.5	90.0
Cyanobacteria	6.3	2.9	2.0	4.0	2.6	4.8	1.6	2.0
Bacteroidetes	4.9	4.2	2.4	5.0	7.6	1.4	6.1	5.8
Other (<1%)	1.6	0.2	0.4	1.2	2.2	0.9	0.8	2.2
Class								
Alphaproteobacteria	73.7	81.6	79.9	74.3	69.7	68.4	68.4	67.5
Gammaproteobacteria	12.9	11.5	14.8	14.4	18.0	25.7	24.4	23.5
Flavobacteriia	6.5	3.7	2.2	3.9	6.3	3.5	4.9	4.8
Unclassified Cyanobacteria	3.9	2.7	1.8	5.3	2.5	1.4	1.2	2.1
Other (<1%)	3.0	0.5	1.2	2.1	3.6	1.0	1.0	2.2

Values represent the proportion of proteins with identical taxonomy on total identified protein using TAX-DB, NAM-DB, AM-DB, or Comb-DB in both gel-free and gel-based approaches. The number of peptides detected for each protein was used as quantitative value. Taxa displaying a proportion <1% were gathered into "Other" category.

At the order level and below, the choice of DB was found to affect both qualitatively and quantitatively the taxonomic distribution, independently of the protein fractionation approach (**Figure 2** and **Supplementary Figures 1, 2**). Although *Pelagibacterales* and *Rhodobacterales* were found to be the most dominant taxa independently of the methodology, *Pelagibacterales* were found to represent >50% of the total

At phylum level, most of the proteins identified were assigned to *Proteobacteria* and the least abundant were mainly assigned to *Bacteroidetes* and *Cyanobacteria* (**Table 2**). Although

FIGURE 2 | (A) Relative taxonomic composition at order level for each methodology. Values represent the proportion of proteins with identical taxonomy on total identified protein using TAX-DB, NAM-DB, AM-DB, or Comb-DB in both gel-free and gel-based approaches. The number of peptides detected for each protein was used as quantitative value. Taxa displaying a proportion < 1% were gathered into “Other” category. **(B)** Venn diagrams showing the number of common and unique taxa identified at order level.

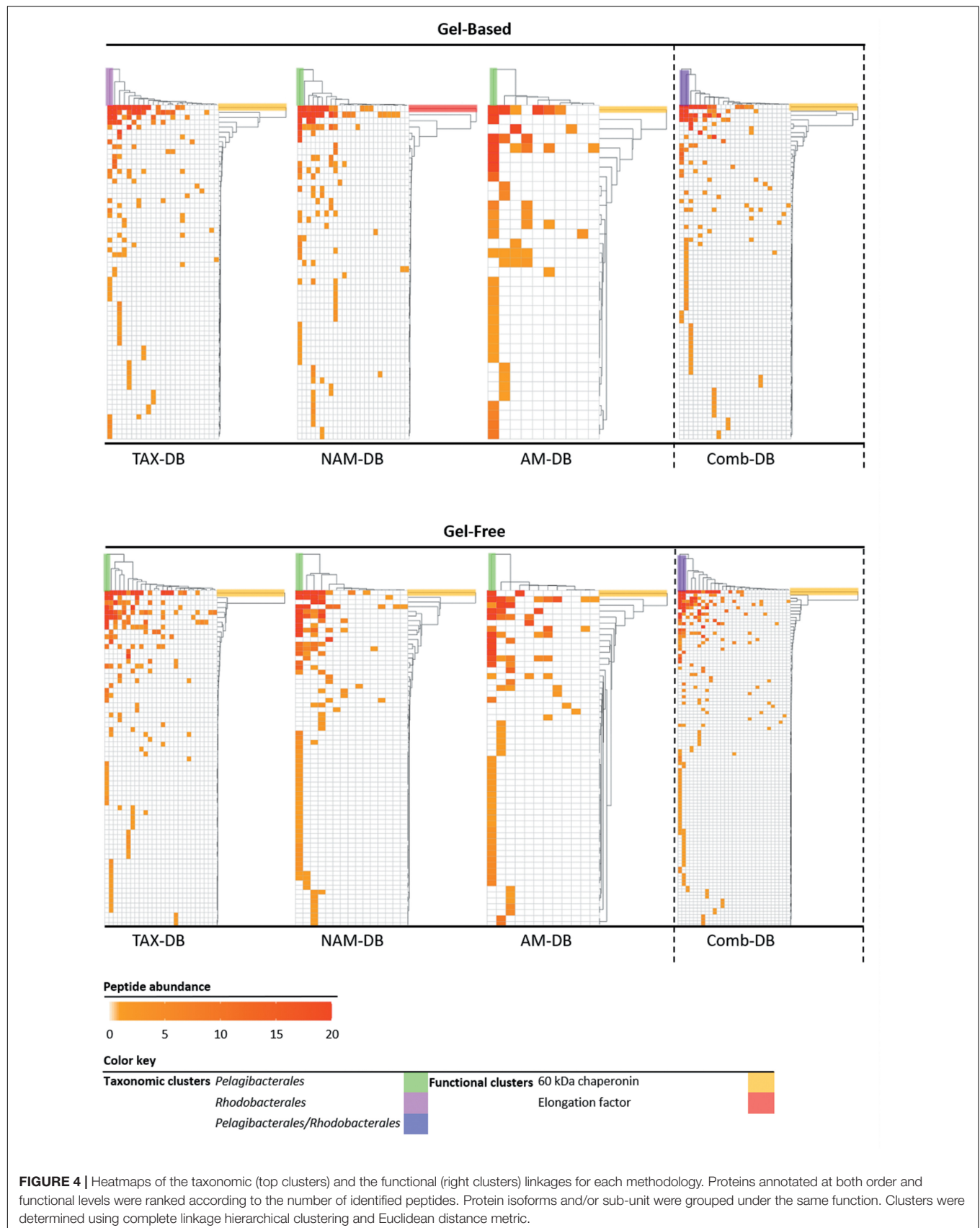


annotated proteins in both NAM-DB and AM-DB (Figure 2A). *Pelagibacteriales* are comprised of the most dominant marine microorganisms in the oceans (Morris et al., 2002) and the dominance of this order in all metaproteomes was in line with prior sea surface metaproteomic studies (Sowell et al., 2009, 2011; Morris et al., 2010; Williams et al., 2012; Georges et al., 2014). The observation of high protein expression profiles assigned to *Rhodobacteriales* was also previously reported (Dong et al., 2014). *Flavobacteriales* were overall more represented in the gel-free approach as well as *Cellvibrionales* but only with NAM-DB and AM-DB. *Synechococcales* were more frequently identified in the metaproteomes obtained from the gel-based approach. TAX-DB led to the characterization of many proteins from the following taxa: *Pseudomonadales*, *Rhizobiales*, and *Sphingomonadales*. These taxa were either absent or rarely represented in NAM-DB or AM-DB. As stated above, TAX-DB provided the highest number of annotated proteins, explaining the more diverse distribution obtained using this DB. Interestingly, the taxonomic distributions obtained with Comb-DB were found to be a good compromise between TAX-DB, NAM-DB, and AM-DB (Figure 2A). As shown in the Venn diagrams provided in Figure 2B, only one quarter out of the 34 and 41 unique orders observed in gel-based and gel-free approaches, respectively, was common to all DBs. Around 40 and 30% of unique orders were exclusively characterized in TAX-DB and Comb-DB in gel-based and gel-free approaches, respectively, demonstrating the performance of those DBs at extracting the broadest diversity.

Proteomics Workflow and Protein Search DB Affect Functional Identification

The total number of proteins, for which a functional consensus annotation was found, decreased with the following order: TAX-DB (gel-based: 66%, gel-free: 77%) > AM-DB (gel-based: 61%, gel-free: 54%) > NAM-DB (gel-based: 50%, gel-free: 54%) (Figure 1 and Supplementary Table 1). Using Comb-DBs, 59 and 67% of functional annotation were observed in gel-based and gel-free approach, respectively. Alignment-based functional annotation (Werner et al., 2019) might be sub-optimal when protein architecture is different. In that case, domain prediction using InterProScan (Jones et al., 2014) would be a complementary approach that would confirm an alignment-based functional consensus.

In all metaproteomes, the 60 kDa chaperonin was found to be the most abundant protein (Figure 3A). The prevalence of chaperonin proteins was previously observed in other marine metaproteomic studies (Sowell et al., 2009, 2011; Williams et al., 2012). The 60 kDa chaperonin is an essential protein involved in large range of protein folding and could potentially act as signaling molecule (Maguire et al., 2002). Moreover, this protein is found in nearly all bacteria. Some taxa, such as *Alphaproteobacteria* or *Cyanobacteria*, often contain several 60 kDa chaperonin homologs (Lund, 2009). On top of its ubiquity and its vital role, the abundance of the 60 kDa chaperonin could be interpreted as a response to environmental stresses exposure (Sowell et al., 2009, 2011; Williams et al., 2012).



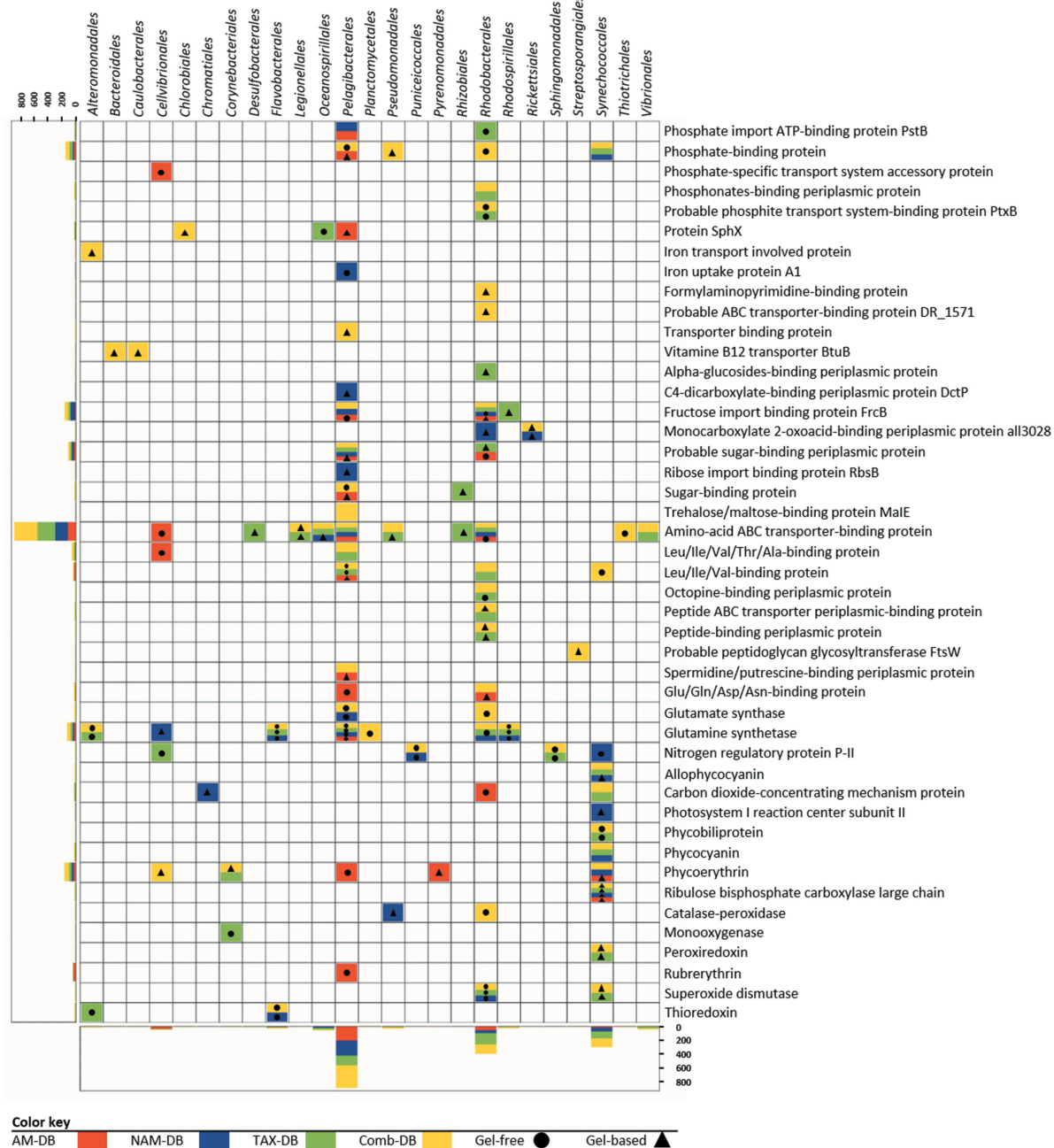


FIGURE 5 | Diversity and taxonomic distribution of proteins involved in nutrient transport, nitrogen assimilation, light harvesting, and oxidative stress response for each methodology. Horizontal and vertical bar charts correspond to the total number of peptides detected for a given function (y-axis) or order (x-axis) in all metaproteomes. Protein isoforms and/or sub-unit were grouped under the same function. The lack of symbol in colored boxes means that the protein was observed in both gel-free and gel-based approaches.

Protein fractionation (gel-based versus gel-free) was found to affect both qualitatively and quantitatively the functional distribution as shown in **Figure 3**. The gel-free approach provided the greatest diversity of protein functions in comparison to the gel-based approach (**Figure 3A**). Only 16 and 20% of the protein functions were found to be common in all DBs from the gel-based and gel-free approaches, respectively (**Figure 3B**).

In the gel-based approach, three main functions namely the elongation factor protein, the amino-acid ABC transporter-binding protein, and the ATP synthase were observed in all DBs (**Figure 3A**). In contrast, in the gel-free approach, a higher number of abundant proteins was observed, including: 50S ribosomal proteins, elongation factor protein, ATP synthase, DNA-binding protein, amino-acid ABC transporter-binding

protein, 10 kDa chaperonin, and the chaperone protein DnaK (**Figure 3A**). In both proteomics approaches, each individual DB allowed the characterization of a significant number of unique protein functions (**Figure 3B**). Comb-DB proved to be effective at merging the results obtained from each individual DB, leading to the highest number of identified functions.

Metaproteomic Workflow Alters Biological Interpretation

All proteins annotated at both taxonomic (order rank) and functional levels were clustered and visualized into heatmaps for each DB (**Figure 4**). Interestingly, in five out of six heatmaps derived from NAM-DB, AM-DB, and TAX-DB, *Pelagibacterales* was found to be a taxonomic cluster that stood out from all other taxa comprising of *Rhodobacterales*, *Rhizobiales*, *Pseudomonadales*, *Oceanospirillales*, *Cellvibrionales*, *Flavobacteriales*, or *Synechococcales*. An exception was observed for TAX-DB in the gel-based approach where *Rhodobacterales* formed a distinct cluster instead of *Pelagibacterales*. Both *Pelagibacterales* and *Rhodobacterales* clustered apart together from all other taxa when using the Comb-DB. Regarding the functional clustering, the 60 kDa chaperonin was found to stand out all other functions apart from NAM-DB in the gel-based approach. Despite the similar trend observed for the most abundant taxa and most represented protein functions for all metaproteomes, **Figure 4** clearly shows that the methodology was found to significantly alter the structure/function network.

Interestingly, the detection in all metaproteomes of numerous transporters, mainly for amino-acid/peptide and carbohydrate substrates, across different taxa demonstrated the strategy evolved by bacteria to survive under nutrient-limited environments (**Figure 5**) (Button and Robertson, 2000; Zimmer et al., 2000; Hoch et al., 2006; Williams and Cavicchioli, 2014). In contrast, key proteins involved in iron, nitrogen, phosphorous, or vitamin metabolisms were characterized in only few metaproteomes. These results emphasized the risk of misinterpretation on the bacterial response to oligotrophic conditions.

The detection of proteins involved in light-harvesting, photosynthesis, and oxidative stress response was found to be particularly dependent of the workflow (**Figure 5**). A total of 16 of the 26 proteins were characterized in only one metaproteome, showing that a robust experimental design using multiple methodologies will improve the understanding of the microbial light response. Indeed, combining the information found in all metaproteomes helped at depicting the variety of pigments belonging to photoautotrophs or photoheterotrophs (Giovannoni et al., 2005). The characterization of the carbon dioxide-concentrating mechanism protein Ccmk together with the ribulose biphosphate carboxylase (RuBisCO) informed on how primary producers, such as *Synechococcales* and *Rhodobacterales* overcome inorganic carbon limitation (Woodger et al., 2003; Sowell et al., 2009). Overall, several oxidative stress-related proteins and numerous chaperonin proteins were identified in all metaproteomes, suggesting the adaptability of the microbial community to cope with oxidative

stress. As a reminder, surface water samples were collected in summer at the surface of the Mediterranean Sea, where high solar irradiance was encountered. Chaperones are essential for coping with UV-induced protein damage and maintaining proper protein function (Matallana-Surget et al., 2013). Consequently, those metaproteomics results suggest that strategies used by microorganisms to cope with high solar radiation could be similar to the ones extensively described in axenic cultures using microcosms experiments (Matallana-Surget and Wattiez, 2013).

CONCLUSION

Metaproteomics enables to progress beyond a mere descriptive analysis of microbial community diversity and structure, providing specific details on which bacteria, and which pathways of those key players, are impacted by possible perturbations. Nevertheless, using this powerful tool without fully apprehending the limitations could lead to significant misinterpretations, especially in the case of comparative metaproteomic studies. This study clearly evidenced the implications of critical decisions in metaproteomic workflow. Our findings lead to the general recommendation of diversifying when possible the protein search database as well as protein fractionation, especially if only one condition/ecosystem was studied. A robust diversified workflow allows crossing information from multiple metaproteomes in order to accurately describe the functioning of microbial communities. In a comparative metaproteomic study however, the best compromise relies on the creation of a Comb-DB. Our findings will undoubtedly serve future studies aiming at reliably capturing how microorganisms operate in their environment.

DATA AVAILABILITY STATEMENT

Publicly available datasets were analyzed in this study. This data can be found here: PXD014582.

AUTHOR CONTRIBUTIONS

SM-S conceived the study, performed the water sampling, and protein extraction. SM-S and RW performed mass spectrometry analysis. AG, JW, and SM-S participated in the design of the mPies program. JW developed the mPies program. AG analyzed all the data and wrote the manuscript. AG and JW prepared the figures. SM-S, RW and PL contributed the resources. All authors edited the manuscript and approved the final draft of the manuscript.

FUNDING

This work was supported by the Royal Society, United Kingdom (RG160594), the Belgian Fund for Scientific Research (Grand equipment – F.R.S. – FNRS), and the Federal Ministry of Education and Research (BMBF, Grant No. 031 A535A). The funders had no role in study design, data collection and analysis, decision to publish, or preparation of the manuscript. AG is

the recipient of a 50/50 match funding scholarship between the University of Stirling (Scotland, United Kingdom) and the University of Mons (Belgium). Open access was funded by the University of Stirling.

ACKNOWLEDGMENTS

The authors acknowledge the use of de.NBI cloud and the support by the High Performance and Cloud Computing Group at the Zentrum für Datenverarbeitung of the University of Tübingen. They want to personally acknowledge Jules Kerssemakers (German Cancer

Research Center), Manuel Prinz, and Katrin Leinweber (Technische Informationsbibliothek, TIB.eu) for code review, critical thoughts, and software publication advice. This manuscript has been released as a Pre-Print at bioRxiv (doi: 10.1101/697599).

SUPPLEMENTARY MATERIAL

The Supplementary Material for this article can be found online at: <https://www.frontiersin.org/articles/10.3389/fmicb.2019.02395/full#supplementary-material>

REFERENCES

- Absciex (2014). *Understanding the Pro Group™ Algorithm*. Available at: <https://sciex.com/Documents/manuals/proteinPilot-ProGroup-Algorithm.pdf> (accessed June 12, 2019).
- Bolger, A. M., Lohse, M., and Usadel, B. (2014). Trimmomatic: a flexible trimmer for Illumina sequence data. *Bioinformatics* 30, 2114–2120. doi: 10.1093/bioinformatics/btu170
- Bryson, S., Li, Z., Pett-Ridge, J., Hettich, R. L., Mayali, X., Pan, C., et al. (2016). Proteomic stable isotope probing reveals taxonomically distinct patterns in amino acid assimilation by coastal marine bacterioplankton. *Msystems* 1, e27–e15.
- Buchfink, B., Xie, C., and Huson, D. H. (2015). Fast and sensitive protein alignment using DIAMOND. *Nat. Methods* 12, 59–60. doi: 10.1038/nmeth.3176
- Button, D. K., and Robertson, B. (2000). Effect of nutrient kinetics and cytoarchitecture on bacterioplankton size. *Limnol. Oceanogr.* 45, 499–505. doi: 10.4319/lo.2000.45.2.0499
- Cantarel, B. L., Erickson, A. R., VerBerkmoes, N. C., Erickson, B. K., Carey, P. A., and Pan, C. (2011). Strategies for metagenomic-guided whole-community proteomics of complex microbial environments. *PLoS One* 6:e27173. doi: 10.1371/journal.pone.0027173
- Deusch, S., Camarinha-Silva, A., Conrad, J., Beifuss, U., Rodehutschord, M., and Seifert, J. (2017). A structural and functional elucidation of the rumen microbiome influenced by various diets and microenvironments. *Front. Microbiol.* 8:1605. doi: 10.3389/fmicb.2017.01605
- Dong, H. P., Hong, Y. G., Lu, S., and Xie, L. Y. (2014). Metaproteomics reveals the major microbial players and their biogeochemical functions in a productive coastal system in the northern South China Sea. *Environ. Microbiol. Rep.* 6, 683–695. doi: 10.1111/1758-2229.12188
- Franzosa, E. A., Hsu, T., Sirota-Madi, A., Shafquat, A., Abu-Ali, G., Morgan, X. C., et al. (2015). Sequencing and beyond: integrating molecular ‘omics’ for microbial community profiling. *Nat. Rev. Microbiol.* 13, 360–372. doi: 10.1038/nrmicro3451
- Fu, L., Niu, B., Zhu, Z., Wu, S., and Li, W. (2012). CD-HIT: accelerated for clustering the next-generation sequencing data. *Bioinformatics* 28, 3150–3152. doi: 10.1093/bioinformatics/bts565
- Gallois, N., Alpha-Bazin, B., Ortet, P., Barakat, M., Piette, L., Long, J., et al. (2018). Proteogenomic insights into uranium tolerance of a Chernobyl’s *Microbacterium* bacterial isolate. *J. Proteom.* 177, 148–157. doi: 10.1016/j.jprot.2017.11.021
- Galperin, M. Y., Rigden, D. J., and Fernández-Suárez, X. M. (2015). The 2015 nucleic acids research database issue and molecular biology database collection. *Nucleic Acids Res.* 43, D1–D5.
- Georges, A. A., El-Swaiss, H., Craig, S. E., Li, W. K., and Walsh, D. A. (2014). Metaproteomic analysis of a winter to spring succession in coastal northwest Atlantic Ocean microbial plankton. *ISME J.* 8, 1301–1313. doi: 10.1038/ismej.2013.234
- Giovannoni, S. J., Tripp, H. J., Givan, S., Podar, M., Vergin, K. L., and Baptista, D. (2005). Genome streamlining in a cosmopolitan oceanic bacterium. *Science* 309, 1242–1245. doi: 10.1126/science.1114057
- Herbst, F. A., Lünsmann, V., Kjeldal, H., Jehmlich, N., Tholey, A., and von Bergen, M. (2016). Enhancing metaproteomics—the value of models and defined environmental microbial systems. *Proteomics* 16, 783–798. doi: 10.1002/pmic.201500305
- Heyer, R., Schallert, K., Zoun, R., Becher, B., Saake, G., and Benndorf, D. (2017). Challenges and perspectives of metaproteomic data analysis. *J. Biotechnol.* 261, 24–36. doi: 10.1016/j.jbiotec.2017.06.1201
- Hoch, M. P., Snyder, R. A., Jeffrey, W. H., Dillon, K. S., and Coffin, R. B. (2006). Expression of glutamine synthetase and glutamate dehydrogenase by marine bacterioplankton: assay optimizations and efficacy for assessing nitrogen to carbon metabolic balance in situ. *Limnol. Oceanogr.* 4, 308–328. doi: 10.4319/lo.2006.4.308
- Huson, D. H., Beier, S., Flade, I., Górski, A., El-Hadidi, M., Mitra, S., et al. (2016). MEGAN community edition-interactive exploration and analysis of large-scale microbiome sequencing data. *PLoS Comput. Biol.* 12:e1004957. doi: 10.1371/journal.pcbi.1004957
- Hyatt, D., Chen, G. L., LoCascio, P. F., Land, M. L., Larimer, F. W., and Hauser, L. J. (2010). Prodigal: prokaryotic gene recognition and translation initiation site identification. *BMC Bioinform.* 11:119. doi: 10.1186/1471-2105-11-119
- Jagtap, P., Goslinga, J., Kooren, J. A., McGowan, T., Wroblewski, M. S., Seymour, S. L., et al. (2013). A two-step database search method improves sensitivity in peptide sequence matches for metaproteomics and proteogenomics studies. *Proteomics* 13, 1352–1357. doi: 10.1002/pmic.201200352
- Jones, P., Binns, D., Chang, H. Y., Fraser, M., Li, W., McAnulla, C., et al. (2014). InterProScan 5: genome-scale protein function classification. *Bioinformatics* 2014, 1236–1240. doi: 10.1093/bioinformatics/btu031
- Kan, J., Hanson, T. E., Ginter, J. M., Wang, K., and Chen, F. (2005). Metaproteomic analysis of Chesapeake Bay microbial communities. *Saline Syst.* 1:7.
- Kanehisa, M., Sato, Y., Furumichi, M., Morishima, K., and Tanabe, M. (2018). New approach for understanding genome variations in KEGG. *Nucleic Acids Res.* 47, D590–D595.
- Koonin, E. V. (2009). Evolution of genome architecture. *Int. Biochem. Cell Biol.* 41, 298–306.
- Lacerda, C. M., and Reardon, K. F. (2009). Environmental proteomics: applications of proteome profiling in environmental microbiology and biotechnology. *Brief. Funct. Genomics Proteom.* 8, 75–87. doi: 10.1093/bfpg/elp005
- Leary, D. H., Herve, I. V. W. J., Deschamps, J. R., Kusterbeck, A. W., and Vora, G. J. (2013). Which metaproteome? The impact of protein extraction bias on metaproteomic analyses. *Mol. Cell. Proteom.* 27, 193–199. doi: 10.1016/j.mcp.2013.06.003
- Lund, P. A. (2009). Multiple chaperonins in bacteria—why so many? *FEMS Microbiol. Rev.* 33, 785–800. doi: 10.1111/j.1574-6976.2009.00178.x
- Ma, J., Chen, T., Wu, S., Yang, C., Bai, M., Shu, K., et al. (2018). iProX: an integrated proteome resource. *Nucleic Acids Res.* 47, D1211–D1217. doi: 10.1093/nar/gky869
- Maguire, M., Coates, A. R., and Henderson, B. (2002). Chaperonin 60 unfolds its secrets of cellular communication. *Cell Stress Chaperones* 7, 317–329.
- Matallana-Surget, S., Jagtap, P. D., Griffin, T. J., Beraud, M., and Wattiez, R. (2018). “Comparative metaproteomics to study environmental changes,” in *Metagenomics: Perspectives, Methods, and Applications*, ed. M. Nagarajan

- (Amsterdam: Elsevier Inc.), 327–363. doi: 10.1016/b978-0-08-102268-9.0017-3
- Matallana-Surget, S., Cavicchioli, R., Fauconner, C., Wattiez, R., Leroy, B., Joux, F., et al. (2013). Shotgun redox proteomics: identification and quantitation of carbonylated proteins in the UVB-resistant marine bacterium. *PLoS One* 8:e68112. doi: 10.1371/journal.pone.0068112
- Matallana-Surget, S., and Wattiez, R. (2013). Impact of solar radiation on gene expression in bacteria. *Proteomes* 1, 70–86. doi: 10.3390/proteomes1020070
- May, D. H., Timmins-Schiffman, E., Mikan, M. P., Harvey, H. R., Borenstein, E., Nunn, B. L., et al. (2016). An alignment-free “metapeptide” strategy for metaproteomic characterization of microbiome samples using shotgun metagenomic sequencing. *J. Proteome Res.* 15, 2697–2705. doi: 10.1021/acs.jproteome.6b00239
- Morris, R. M., Nunn, B. L., Frazar, C., Goodlett, D. R., Ting, Y. S., and Rocap, G. (2010). Comparative metaproteomics reveals ocean-scale shifts in microbial nutrient utilization and energy transduction. *ISME J.* 4, 673–685. doi: 10.1038/ismej.2010.4
- Morris, R. M., Rappé, M. S., Connon, S. A., Vergin, K. L., Siebold, W. A., Carlson, C. A., et al. (2002). SAR11 clade dominates ocean surface bacterioplankton communities. *Nature* 420, 806–810. doi: 10.1038/nature01240
- Muth, T., Behne, A., Heyer, R., Kohrs, F., Benndorf, D., Hoffmann, M., et al. (2015b). The metaproteomeanalyzer: a powerful open-source software suite for metaproteomics data analysis and interpretation. *J. Proteome Res.* 14, 1557–1565. doi: 10.1021/pr501246w
- Muth, T., Kolmeder, C. A., Salojärvi, J., Keskitalo, S., Varjosalo, M., Verdam, F. J., et al. (2015a). Navigating through metaproteomics data: a logbook of database searching. *Proteomics* 15, 3439–3453. doi: 10.1002/pmic.201400560
- Nesvizhskii, A. I. (2010). A survey of computational methods and error rate estimation procedures for peptide and protein identification in shotgun proteomics. *J. Proteom.* 73, 2092–2123. doi: 10.1016/j.jprot.2010.08.009
- Nurk, S., Meleshko, D., Korobeynikov, A., and Pevzner, P. A. (2017). metaSPAdes: a new versatile metagenomic assembler. *Genome Res.* 27, 824–834. doi: 10.1101/gr.213959.116
- Rechenberger, J., Samaras, P., Jarzab, A., Behr, J., Frejino, M., Djukovic, A., et al. (2019). Challenges in clinical metaproteomics highlighted by the analysis of acute leukemia patients with gut colonization by multidrug-resistant enterobacteriaceae. *Proteomes* 7, E2. doi: 10.3390/proteomes7010002
- Rho, M., Tang, H., and Ye, Y. (2010). FragGeneScan: predicting genes in short and error-prone reads. *Nucleic Acids Res.* 38, e191–e191. doi: 10.1093/nar/gkq747
- Russo, A., Couto, N., Beckerman, A., and Pandhal, J. (2016). A metaproteomic analysis of the response of a freshwater microbial community under nutrient enrichment. *Front. Microbiol.* 7:1172. doi: 10.3389/fmicb.2016.01172
- Saito, M. A., Alexander, D., Anton, F. P., Matthew, R. M., Michael, S. R., Giacomo, R. D., et al. (2015). Needles in the blue sea: sub-species specificity in targeted protein biomarker analyses within the vast oceanic microbial metaproteome. *Proteomics* 15, 3521–3531. doi: 10.1002/pmic.201400630
- Saito, M. A., Bertrand, E. M., Duffy, M. E., Gaylord, D. A., Held, N. A., and Hervey, I. V. W. J. (2019). Progress and challenges in ocean metaproteomics and proposed best practices for data sharing. *J. Proteome Res.* 18, 1461–1476. doi: 10.1021/acs.jproteome.8b00761
- Schneider, T., Schmid, E., de Castro, J. V. Jr., Cardinale, M., Eberl, L., Grube, M., et al. (2011). Structure and function of the symbiosis partners of the lung lichen (*Lobaria pulmonaria* L. Hoffm.) analyzed by metaproteomics. *Proteomics* 11, 2752–2756. doi: 10.1002/pmic.201000679
- Serrano-Villar, S., Rojo, D., Martínez-Martínez, M., Deusch, S., Vázquez-Castellanos, J., and Bargiela, R. (2016). Gut bacteria metabolism impacts immune recovery in HIV-infected individuals. *E Bio Med.* 8, 203–216. doi: 10.1016/j.ebiom.2016.04.033
- Sowell, S. M., Abraham, P. E., Shah, M., Verberkmoes, N. C., Smith, D. P., Barofsky, D. F., et al. (2011). Environmental proteomics of microbial plankton in a highly productive coastal upwelling system. *ISME J.* 5, 856–865. doi: 10.1038/ismej.2010.168
- Sowell, S. M., Wilhelm, L. J., Norbeck, A. D., Lipton, M. S., Nicora, C. D., Barofsky, D. F., et al. (2009). Transport functions dominate the SAR11 metaproteome at low-nutrient extremes in the Sargasso Sea. *ISME J.* 3, 93–105. doi: 10.1038/ismej.2008.83
- Tanca, A., Palomba, A., Deligios, M., Cubeddu, T., Fraumene, C., Biosi, G., et al. (2013). Evaluating the impact of different sequence databases on metaproteome analysis: insights from a lab-assembled microbial mixture. *PLoS One* 8:e82981. doi: 10.1371/journal.pone.0082981
- Tanca, A., Palomba, A., Fraumene, C., Pagnozzi, D., Manghina, V., Deligios, M., et al. (2016). The impact of sequence database choice on metaproteomic results in gut microbiota studies. *Microbiome* 4:51.
- Teeling, H., Fuchs, B. M., Becher, D., Klockow, C., Gardebrecht, A., Bennke, C. M., et al. (2012). Substrate-controlled succession of marine bacterioplankton populations induced by a phytoplankton bloom. *Science*. 336, 608–611. doi: 10.1126/science.1218344
- Timmins-Schiffman, E., May, D. H., Mikan, M., Riffle, M., Frazar, C., Harvey, H. R., et al. (2017). Critical decisions in metaproteomics: achieving high confidence protein annotations in a sea of unknowns. *ISME J.* 11, 309–314. doi: 10.1038/ismej.2016.132
- Wang, D. Z., Xie, Z. X., and Zhang, S. F. (2014). Marine metaproteomics: current status and future directions. *J. Proteom.* 97, 27–35. doi: 10.1016/j.jprot.2013.08.024
- Werner, J., Geron, A., Kerssemakers, J., and Matallana-Surget, S. (2019). *mPies: a Novel Metaproteomics Tool for the Creation of Relevant Protein Databases and Automatized Protein Annotation*. *Biorxiv*. [preprint]. doi: 10.1101/690131
- Williams, T. J., and Cavicchioli, R. (2014). Marine metaproteomics: deciphering the microbial metabolic food web. *Trends Microbiol.* 22, 248–260. doi: 10.1016/j.tim.2014.03.004
- Williams, T. J., Long, E., Evans, F., DeMaere, M. Z., Lauro, F. M., Raftery, M. J., et al. (2012). A metaproteomic assessment of winter and summer bacterioplankton from Antarctic Peninsula coastal surface waters. *ISME J.* 6, 1883–1900. doi: 10.1038/ismej.2012.28
- Williams, T. J., Wilkins, D., Long, E., Evans, F., DeMaere, M. Z., Raftery, M. J., et al. (2013). The role of planktonic Flavobacteria in processing algal organic matter in coastal East Antarctica revealed using metagenomics and metaproteomics. *Environ. Microbiol.* 15, 1302–1317. doi: 10.1111/1462-2920.12017
- Wilmes, P., and Bond, P. L. (2004). The application of two-dimensional polyacrylamide gel electrophoresis and downstream analyses to a mixed community of prokaryotic microorganisms. *Environ. Microbiol.* 6, 911–920. doi: 10.1111/j.1462-2920.2004.00687.x
- Wilmes, P., Heintz-Buschart, A., and Bonf, P. L. (2015). A decade of metaproteomics: where we stand and what the future holds. *Proteomics* 15, 3409–3417. doi: 10.1002/pmic.201500183
- Wöhlbrand, L., Trautwein, K., and Rabus, R. (2013). Proteomic tools for environmental microbiology—a roadmap from sample preparation to protein identification and quantification. *Proteomics* 13, 2700–2730. doi: 10.1002/pmic.201300175
- Woodcroft, B. (2018). *Singlem*. Available from: <https://github.com/wwood/singlem/> (accessed April 27, 2019).
- Woodger, F. J., Badger, M. R., and Price, G. D. (2003). Inorganic carbon limitation induces transcripts encoding components of the CO₂-concentrating mechanism in *Synechococcus* sp. *Plant Physiol.* 133, 2069–2080. doi: 10.1104/pp.103.029728
- Zimmer, D. P., Soupene, E., Lee, H. L., Wendisch, V. F., Khodursky, A. B., Peter, B. J., et al. (2000). Nitrogen regulatory protein C-controlled genes of *Escherichia coli*: scavenging as a defense against nitrogen limitation. *Proc. Natl. Acad. Sci. U.S.A.* 97, 14674–14679. doi: 10.1073/pnas.97.26.14674

Conflict of Interest: The authors declare that the research was conducted in the absence of any commercial or financial relationships that could be construed as a potential conflict of interest.

Copyright © 2019 Géron, Werner, Wattiez, Lebaron and Matallana-Surget. This is an open-access article distributed under the terms of the Creative Commons Attribution License (CC BY). The use, distribution or reproduction in other forums is permitted, provided the original author(s) and the copyright owner(s) are credited and that the original publication in this journal is cited, in accordance with accepted academic practice. No use, distribution or reproduction is permitted which does not comply with these terms.