

Genome wide identification and functional characterization of two LC-PUFA biosynthesis elongase (*elovl8*) genes in rabbitfish (*Siganus canaliculatus*)

Yang Li^{a†}, Zhengyong Wen^{c, d†}, Cuihong You^a, Zhiyong Xie^a, Douglas R. Tocher^e, Yueling Zhang^a, Shuqi Wang^{a*}, Yuanyou Li^{b*}

^a Guangdong Provincial Key Laboratory of Marine Biotechnology, Institute of Marine Sciences, Shantou University, Shantou 515063, China

^b College of Marine Sciences of South China Agricultural University & Guangdong Laboratory of Lingnan Modern Agriculture, Guangzhou, 510642, China

^c BGI Education Center, University of Chinese Academy of Sciences, Shenzhen 518083, China

^d Shenzhen Key Lab of Marine Genomics, Guangdong Provincial Key Lab of Molecular Breeding in Marine Economic Animals, BGI Academy of Marine Sciences, BGI Marine, BGI, Shenzhen 518083, China

^e Institute of Aquaculture, Faculty of Natural Sciences, University of Stirling, Stirling FK9 4LA, Scotland, UK

*Correspondence Author:

Prof. Yuanyou Li, Ph.D. (E-mail: yyli16@scau.edu.cn; Tel: 020-87571321)

Shuqi Wang, Ph.D. (E-mail: sqw@stu.edu.cn; Tel: 0754-86500614)

[†]These authors contributed equally to this work.

Abstract

Elongases of very long-chain fatty acids (Elovl5) catalyze the rate-limiting step of the elongation pathway that results in net 2-carbon elongation of pre-existing fatty acyl chains. As a set of crucial enzymes involved in the long-chain polyunsaturated fatty acids (LC-PUFA) biosynthesis, Elovl5 of fish have been investigated extensively in recent years. In the present study, we first identified two novel fish-specific *elovl* genes (named as *elovl8a* and *elovl8b*) from the herbivorous marine teleost rabbitfish (*Siganus canaliculatus*) by genomic survey and molecular cloning methods. Subsequently, their functional characteristics, tissue distribution patterns and transcriptional changes in response to different nutritional states were investigated. Full-length coding sequences of the *elovl8a* and *elovl8b* genes were 804 and 792 bp, encoding 267 and 263 amino acids, respectively. Multiple alignment, genomic synteny and phylogenetic analyses further suggested that *elovl8* genes were unique to teleosts. Functional characterization by heterologous expression in yeast showed that Elovl8b could elongate C18 (18:2n-6, 18:3n-3 and 18:4n-3) and C20 (20:4n-6 and 20:5n-3) polyunsaturated fatty acids (PUFA) to longer-chain polyunsaturated fatty acids (LC-PUFA) whereas Elovl8a lacked this ability. *In vitro*, the expression of *elovl8b* but not *elovl8a* in rabbitfish hepatocytes was significantly up-regulated by incubation with 18:2n-6, 18:3n-3, 20:4n-6 and 20:5n-3, respectively. *In vivo*, compared with fish oil, dietary vegetable oil enriched in C18 PUFA enhanced the expression of *elovl8b* in rabbitfish brain, liver, intestine and gill. These findings suggest that *elovl8b* but not *elovl8a* is a novel active member of the Elovl protein family involved in the LC-PUFA biosynthesis pathway in rabbitfish, and provide novel insight into the mechanisms of LC-PUFA biosynthesis in teleost.

Keywords: *elovl8*; Functional characterization; LC-PUFA biosynthesis; Rabbitfish (*Siganus canaliculatus*)

1. Introduction

Long-chain ($n > C20$) polyunsaturated fatty acids (LC-PUFA), especially the omega-3 (n-3) LC-PUFA eicosapentaenoic (EPA; $20:5n-3$) and docosahexaenoic (DHA; $22:6n-3$) acids, are major components of complex lipid molecules and are also involved in numerous critical biological processes in vertebrates, including maintenance of cellular membrane structure, energy metabolism, gene regulation and cellular signaling, and can promote cardiovascular health and immune function (Tocher, 2010; Vagner and Santigosa, 2011). Fish, especially marine fish, are major sources of n-3 LC-PUFA in human diets (Kromhout et al., 2012). With the rapid decline of wild fishery stocks, aquaculture now plays a more important role than wild fisheries in providing fish and seafood for human consumption and it is expected to supply the majority of seafood to satisfy future increased demand (Clavelle et al., 2019). Traditionally, farmed fish were fed with diets containing high levels of marine fishmeal (FM) and fish oil (FO) to ensure good growth rates of the fish and high levels of n-3 LC-PUFA in the flesh. Nowadays, vegetable oils (VO) are widely used in aquafeeds, which reduces the level of n-3 LC-PUFA in farmed fish and, consequently, decreases their nutritional value (Sprague et al., 2016; Henriques et al., 2014). This has prompted interest in elucidating the mechanisms underlying the endogenous LC-PUFA biosynthetic pathways in teleost fish, particularly farmed marine species that have been investigated extensively in recent years (Castro et al., 2016; Monroig and Kabeya, 2018).

In vertebrates, LC-PUFA can be biosynthesized from C18 PUFA precursors, linoleic acid (LA, $18:2n-6$) and α -linolenic acid (ALA, $18:3n-3$), through the concerted action of fatty acyl desaturases (Fads) and Elovl proteins (Castro et al., 2016; Xue et al., 2014). Elovls are key microsomal enzymes involved in the biosynthesis of LC-PUFA from C18 PUFA. Elovls catalyze the condensation reaction, which is the rate-limiting step in the two-carbon elongation of pre-existing fatty acyl chains (Nugteren, 1965). In mammals, seven members of the *elovl*

family were identified based on the presence of specific motifs in their protein sequences (Jakobsson et al., 2006; Guillou et al., 2010). Specifically, *elovl1*, *elovl3*, *elovl6* and *elovl7* have the ability to elongate saturated and monounsaturated fatty acids (MUFA), while *elovl2*, *elovl4* and *elovl5* are involved in elongating PUFA (Jakobsson et al., 2006; Monroig et al., 2010; Guillou et al., 2010).

Investigation of the Elovl enzymes involved in LC-PUFA biosynthesis, focused on Elovl2, Elovl4 and Elovl5, enabled a better understanding of the PUFA elongation pathways in teleosts. The zebrafish (*Danio rerio*) *elovl5* was the first cloned *elovl* gene that was functionally characterized as a critical enzyme in the elongation step of LC-PUFA biosynthesis from a fish species (Agaba et al., 2004). Subsequently, *elovl5* was cloned and characterized in numerous fish species (Agaba et al., 2005; Hastings et al., 2004; Zheng et al., 2009; Mohd-Yusof et al., 2010; Morais et al., 2009, 2011; Kim et al., 2012; Monroig et al., 2012, 2013; Gregory et al., 2010, 2014). These studies confirmed that *elovl5* in fish had the ability to preferentially elongate C18 (18:4n-3 and 18:3n-6) and C20 (EPA and arachidonic acid, ARA, 20:4n-6) PUFA, with only low activity towards C22 PUFA (22:5n-3 and 22:4n-6), which was similar to mammalian and invertebrate homologues (Leonard et al., 2000, 2002; Li et al., 2016). However, *elovl2* was only isolated from a few fish species, and shown to mainly elongate C20 and C22 PUFA with only low ability to elongate C18 PUFA (Morais et al., 2009; Monroig et al., 2009; Gregory and James, 2014).

Elovl4 is the most recent member of the Elovl family to be studied in teleost fish, which includes two isoforms of *elovl4a* and *elovl4b*. The *elovl4a* was first identified and functionally characterized in zebrafish, which indicated it had the ability to efficiently elongate saturated fatty acids up to C36 (Monroig et al., 2010). However, *elovl4b* was shown to have the ability to efficiently elongate acyl chain- lengths of saturated fatty acids and C20 LC-PUFA (ARA and EPA) up to C36 saturated and very long-chain PUFA (VLC-PUFA) in various fish species,

respectively (Carmona-Antoñanzas et al., 2011; Jin et al., 2017; Kabeya et al., 2015; Li et al., 2017a, 2017b; Monroig et al., 2010, 2012, 2011; Yan et al., 2018).

In addition to *elovl4a* and *elovl4b*, two further *elovl4*-like genes (termed as *elovl4c-1* and *elovl4c-2*) were cloned from Atlantic cod (*Gadus morhua*), and phylogenetic analysis showed they clustered separately from *elovl4a* or *elovl4b* genes (Xue et al., 2014). Indeed, surveys of fish genomes revealed that there might be similar *elovl* genes that have been annotated as “*elovl4*” (or “*elovl4*- like”) in many fish species such as Atlantic salmon (*Salmo salar*, XP_014071374), channel catfish (*Ictalurus punctatus*, XP_017324302), Nile tilapia (*Oreochromis niloticus*, XP_005479178.1), and rabbitfish. Interestingly, two similar isoforms had been found in the zebrafish genome (NP_001191453 and NP_001070061) and they were annotated as *elovl8a* and *elovl8b*, respectively. Although the relevant annotation and the phylogenetic analysis have identified these novel genes as *elovls*, their functions are unknown. Therefore, it is important to investigate whether these genes are involved in LC-PUFA biosynthesis.

Rabbitfish, an economically important herbivorous marine teleost fish species widespread along the Indo-West Pacific coast, was the first marine teleost demonstrated to have capability for LC-PUFA biosynthesis from C₁₈ PUFA (Li et al., 2010). Genes encoding key enzymes with all the activities required for LC-PUFA biosynthesis including $\Delta 4$ *fads2*, bifunctional $\Delta 6/\Delta 5$ *fads2*, *elovl4* and *elovl5*, have been cloned and functionally characterized in this species, which makes rabbitfish a good model for studying the mechanisms of LC-PUFA biosynthesis (Li et al., 2010; Monroig et al., 2012). In order to expand our knowledge of LC-PUFA biosynthesis in rabbitfish, we performed a series of bioinformatic analyses on this fish species, and identified a novel member of the *elovl* gene family, consisting of two isoforms, *elovl8a* and *elovl8b*. The cDNAs were functionally characterized, and tissue distribution patterns and transcriptional changes in various tissues and rabbitfish hepatocytes (SCHL) under

different nutritional states were determined. Our findings suggest that rabbitfish *Elovl8b* can elongate LC-PUFA, while *Elovl8a* lacks this ability. To our knowledge, this is the first comprehensive report of teleost *elovl8* genes. The results can provide a better understanding of the mechanisms of LC-PUFA biosynthesis in vertebrates and may contribute to the optimization and/or enhancement of LC-PUFA biosynthesis in fishes.

2. Materials and methods

2.1 Experimental animals and sample collection

Fish were treated in accordance with the National Institutes of Health guide for the care and use of Laboratory animals (NIH Publications No. 8023, revised 1978) and approved by the Institutional Animal Care and Use Committee of Shantou University (Guangdong, China).

The feeding trial was carried out at Nan Ao Marine Biology Station (NAMBS) of Shantou University, Southern China. Three hundred rabbitfish juveniles (average initial body weight around 15 g, sex visually indistinguishable) were captured from the coast near NAMBS. After one month of acclimation in an indoor seawater (32 ppt) tank at NAMBS, fish with initial average body weight of 25.07 ± 1.43 g were then randomly distributed into 6 tanks with 20 fish per tank in triplicate per treatment. Throughout the trial, the fish were fed two experimental diets with approximatively 32 % crude protein and 8 % crude lipid with the latter supplied by either fish oil (FO) or vegetable oil (VO). The details of the formulation and proximate composition of the experimental diets were shown in Supplemental Table 1. At the end of the 8-week feeding trial, six fish from each tank were randomly selected and brain, liver, intestine and gills were sampled for comparative gene expression analysis. Additionally, during the acclimation period, six fish were randomly selected for molecular cloning and tissue distribution studies. The dissected tissues were immediately frozen in liquid nitrogen and stored at -80 °C until further use.

2.2 RNA isolation and qPCR

Total RNA was extracted with Trizol reagent (Invitrogen, Carlsbad, CA, USA) according to manufacturer's protocol. The concentration and quality of total RNA were confirmed by spectrophotometer (NanoDrop 2000, Thermo Scientific, USA) and 1 µg total RNA was reverse transcribed to cDNA using the QuantiTect® Reverse Transcription kit (Takara Biotech, Dalian, China). Determination of mRNA expression levels was performed by quantitative real-time PCR (qPCR) in a LightCycler® 480 thermocycler (Roche, Germany) in a total volume of 20 µl with the LightCycler® 480 SYBR Green I Master (Roche, Germany) following the manufacturer's protocol. All amplification reactions were carried out in triplicate and a non-template control was also included in each run. The relative expression level of mRNA was normalized with that 18S rRNA, and calculated using the comparative threshold cycle method (Livak and Schmittgen, 2012; Wen et al., 2019). The primer pairs used for RT-PCR are given in Supplemental Table 2.

2.3 Molecular cloning of elovl8 cDNAs from rabbitfish

Based on genomic DNA sequences identified from our genome database and cDNA sequences from our transcriptome database (unpublished), we designed four pairs of primers (Supplemental Table 2) to amplify the full-length cDNA sequences of rabbitfish *elovl8a* and *elovl8b* genes by using liver tissue as template. PCR amplifications were carried out on an Applied Biosystems Veriti Thermal Cycler using 2 × Phanta Max Master Mix (Vazyme Biotech, Nanjing, China) for high fidelity amplification. The target products were purified using TIAN quick mini purification kit (Tiangen Biotech, Beijing, China), cloned into pMD™ 18-T vector (TaKaRa Biotech, Dalian, China) and subsequently sequenced (Sangon Biotech, Shanghai, China).

2.4 Bioinformatic analysis, data processing and phylogenetic analysis

The obtained sequences were blasted on the NCBI database for annotation, and the valid rabbitfish *elovl8a* and *elovl8b* cDNA sequences were submitted to NCBI (MN807637

and MN807638) and used for further bioinformatic analyses. The open reading frames (ORFs) of the two genes were predicted using ORF finder (<https://www.ncbi.nlm.nih.gov/orffinder/>), and the putative protein sequences were translated using Primer Premier 5.0 software. Functional motifs were identified according to previous literature. Subsequently, multiple protein sequences alignment was performed using BioEdit software (Hall et al., 2011). Additionally, synteny and gene structures of fish *elovl8* genes were compared on the basis of a comparative genomic survey to validate the existent of the fish *elovl8* genes.

To explore the phylogenetic position of the fish Elovls, we constructed a phylogenetic tree based on a dataset of protein sequences. All Elovl protein sequences were downloaded from NCBI or Ensembl database except for the rabbitfish Elovls, and then multiple alignment was performed using CLUSTAL X2.1 (Larkin et al., 2007). After alignment, Mega 6.0 software (Tamura et al., 2013) was used to construct the phylogenetic tree using the neighbour-joining (NJ) method, and JTT + G was selected as the best model according to the model calculation. Meanwhile, a nonparametric bootstrap analysis with 1,000 resampling replicates was used to assess the robustness of the tree topology. *Mimachlamys nobilis* Elovl- like protein was selected as the outgroup.

2.5 Functional characterization in yeast

Liver cDNA was used to amplify the PCR fragments corresponding to the open reading frame (ORF) of the rabbitfish *elovl8a* and *elovl8b*, using 2 × Phanta Max Master Mix (Vazyme Biotech, Nanjing, China) according to manufacturer's protocol. Special primer pairs with restriction sites (underlined) for ORF cloning are listed in Supplemental Table 2. PCR conditions consisted of an initial denaturing step at 95 °C for 3 min, followed by 35 cycles of denaturation at 95 °C for 10s, annealing at 62 °C (*elovl8a*) or 65 °C (*elovl8b*) for 10s, extension at 72 °C for 30s, followed by a final extension at 72 °C for 8 min. DNA fragments were purified (TIAN quick mini purification kit, Tiangen Biotech), digested with the corresponding

restriction endonucleases (New England Biolabs, Inc., USA) and ligated to a similarly restricted pYES2 yeast expression vector (Invitrogen, UK). The purified recombinant plasmids containing the putative *elovl8a* or *elovl8b* ORFs were used to transform *Saccharomyces cerevisiae* competent cells (S.c EasyComp Transformation Kit, Invitrogen).

Transformation and selection of yeast with recombinant plasmids (pYES2-*elovl8a* or pYES2-*elovl8b*) and yeast culture were performed according to the methods described by Monroig et al. (2012). Recombinant yeasts were incubated in media containing one of the following fatty acid substrates: 18:3n-3, 18:2n-6, 18:4n-3, 18:3n-6, 20:5n-3, 20:4n-6, 22:5n-3 and 22:4n-6 (Cayman, Ann Arbor, USA). The final concentrations of fatty acid substrates added to the yeast cultures were as following: 0.5 (C18), 0.75 (C20) and 1.0 (C22) mM. As control treatment, yeast transformed with empty pYES2 was cultured under the same conditions. After 2 days, yeast was harvested and washed for further analyses.

2.6 Fatty acid analysis by GC-MS

Total lipid of yeast samples was extracted according to Yan et al. (2018) and fatty acid methyl esters (FAME) were prepared and purified according to method described by Christie (2003). FAME were identified and quantified by gas chromatography coupled with a mass spectrometer (GC-MS) (2010- ultra, Shimadzu, Japan) as described previously (Hastings et al., 2001; Agaba et al., 2004). Conversions of PUFA substrates were calculated by the proportion of substrate fatty acid (FA) converted to elongated FA products, as [individual product area/ (all products areas + substrate area)] \times 100.

2.7 Cell culture and fatty acid incubation

The rabbitfish *S. canaliculatus* hepatocyte line (SCHL) was successfully established previously (Liu et al., 2017). Before the experiment, SCHL cells were cultured at 28 °C in Dulbecco's modified Eagle's medium/nutrient F12 (DMEM/F12, Gibco, Life Technologies, USA) containing 20 mM 4-(2-hydroxyethyl) piperazine-1-ethanesulphonic acid (HEPES,

Sigma-Aldrich, USA), 10 % fetal bovine serum (FBS, Gibco), 0.5 % rainbow trout (*Oncorhynchus mykiss*) serum (Caisson Labs), penicillin (100 U ml⁻¹, Sigma-Aldrich), and streptomycin (100 U ml⁻¹, Sigma-Aldrich).

Fatty acid/ BSA complexes of PUFA including LA, ALA, ARA, EPA and DHA (Cayman, Ann Arbor, USA) at 10 mM concentration were prepared according to Ou et al. (2001) and stored at -20 °C. The SCHL cells were seeded into six-well plates at a density of 1.0×10^6 cells per well in DMEM/F12 supplemented with 5 % FBS and 0.1 % rainbow trout serum. After 24 h, cells were incubated for 2 h in serum- free DMEM/F12 and then exposed to fresh DMEM/F12 medium containing LA, ALA, ARA, EPA or DHA at 100µM in triplicate per treatment. In addition, 0.1% BSA was used as control for PUFA treatments. After incubation for 24 h, the cells were lysed with Trizol reagent (Invitrogen) for total RNA isolation.

2.8 Statistical Analysis

All the data are presented as means \pm SEM. The qPCR expression data were analyzed by one-way analysis of variance (ANOVA) followed by Tukey's multiple comparison test or Student's t test using Origin 7.0. Statistical significances were considered to be significant if $P < 0.05$.

3. Results

3.1 Molecular identification of two rabbitfish *elovl8* genes

The rabbitfish *elovl8a* cDNA contains an 804-bp ORF encoding 267 putative amino acid residues (Fig. 1A), while the rabbitfish *elovl8b* cDNA contains a 792-bp ORF encoding 263 putative amino acid residues (Fig. 1B). Both deduced protein sequences possess six transmembrane α -helix domains, which are considered to be highly conserved among vertebrates including fish. Moreover, four conserved motifs characteristic of elongases were

identified in the two cDNAs (blue type in Fig 1A and B), respectively. In addition, ER retrieval signals were also identified at the C-terminals in both cDNAs.

3.2 Multiple alignments of the *Elovl8s* among fishes

Aligning of multiple amino acid sequences could be helpful for better understanding of structural and functional properties of the examined proteins. Here, multiple alignments of *Elovl8a* and *Elovl8b* among several fishes were performed. We observed that *Elovl8s* are highly conserved across fishes, which share similar structural characteristics (such as six conserved transmembrane α -helix domains, four conserved motifs of elongases, and three highly conserved cysteine residues; see Fig. 2). It is notable that the peptide sequences from the position 1 to 21 are variable and non-conservative (Fig. 2), and *Elovl8a* is approximately 4 residues longer than its paralog *Elovl8b* at the N-terminal (Fig. 2).

3.3 Synteny and gene structure comparisons of the *elovl8* genes in vertebrates

In order to verify the existence of both *elovl8* genes in teleosts, comparative genomic synteny analysis among vertebrates was performed (Fig. 3). Neither *elovl8a* nor *elovl8b* were found in amphibians, reptiles, birds or mammals. Two *elovl8* genes were discovered in zebrafish and rabbitfish (Fig. 3A and B), and they share similar gene orders respectively. Furthermore, only a single copy of *elovl8a* was determined in spotted gar and Asian arowana (Fig. 3A), and *elovl8b* was only determined in Mexican tetra and channel catfish (Fig. 3B). The *elovl8a* and *elovl8b* genes were differentially localized with the *elovl8a* gene surrounded by *seppb* and *zswim5* (Fig. 3A), while the *elovl8b* was commonly located between *mutyh* and *glis1* (Fig. 3B). Interestingly, an *elovl4-like* gene was found in the similar genomic locus as *elovl8a* in an ancient fish, the coelacanth (Fig. 3A).

Comparative gene structure analysis was performed to discover the difference between *elovl8a* and *elovl8b* genes. Results showed that the *elovl8a* gene consisted of eight exons and seven introns in spotted gar, zebrafish and rabbitfish, while the Asian arowana *elovl8a* gene

possessed seven exons and six introns (Fig. 4A). The exon length of *elovl8a* was conserved in the five middle exons but was variable in the other exons. In contrast, the gene structures of *elovl8b* in all the fish species were highly conserved, consisting of eight exons and seven introns, with identical ORF length (Fig. 4B).

3.4 Phylogenetic analysis

To better understand evolutionary relationships among the teleost *elovl8s*, phylogenetic analysis using the Neighbor Joining (NJ) method was performed. The phylogenetic tree showed five clusters for *elovl8*, *elovl4*, *elovl2*, *elovl6* and *elovl5*, with the *elovl8* cluster showing closest relationship to the *elovl4* cluster (Fig. 5). Meanwhile, the *elovl8* cluster was further subdivided into two clades of *elovl8a* and *elovl8b* subtypes (Fig. 5). The rabbitfish *elovl8a* and *elovl8b* were grouped into the *elovl8a* and *elovl8b* clades, and shared close relationships with Amazon molly *elovl8a* and fugu *elovl8b*, respectively.

3.5 Tissue distribution patterns of rabbitfish *elovl8s*

Tissue distribution patterns of the two *elovl8* genes in rabbitfish were determined by qPCR. Twelve tissues including stomach, liver, spleen, heart, gonad, brain, kidney, intestine, muscle, adipose, eye and gill were analyzed. The rabbitfish *elovl8a* was widely transcribed in all examined tissues, and expression was highest in heart and spleen, with the rank order being: heart > spleen > adipose > stomach > muscle > intestine > kidney > gill > eye > liver > gonad > brain (Fig. 6A). Similarly, the rabbitfish *elovl8b* was also extensively distributed in all tissues, with highest expression in brain, eye, and liver with the rank order being: brain > eye > liver > gonad > adipose > gill > spleen > intestine > kidney > heart > stomach > muscle (Fig. 6B).

3.6 Functional characterizations of rabbitfish *Elov18a* and *Elov18b*

Potential functions of the two putative *elovl8* elongases in rabbitfish were determined by heterologous expression in yeast *S. cerevisiae* grown in medium supplemented one of the

following fatty acid substrates: 18:2n-6, 18:3n-3, 18:4n-3, 18:3n-6, 20:4n-6, 20:5n-3, 22:5n-3 and 22:4n-6. The fatty acid composition of yeast transformed with the empty vector (pYES2) showed that the recombinant yeast lacked PUFA elongase activity (data not shown). In yeast transformed with the rabbitfish *Elovl8a*, no additional peaks were detected with any of the added substrate PUFA and so it lacked the ability to convert any of these PUFA into longer chain PUFA (Table 1). In contrast, GC-MS analyses revealed that rabbitfish *Elovl8b* had the ability to elongate C18 PUFA to C20 PUFA, with conversion rates for 18:2n-6 to 20:2n-6, 18:3n-3 to 20:3n-3 and 18:4n-3 to 20:4n-3 of 2.0 %, 3.7 % and 3.7 %, respectively (Table 1). Similarly, rabbitfish *Elovl8b* was able to elongate C20 PUFA to C22 PUFA, with conversion rates for 20:4n-6 and 20:5n-3 to 22:4n-6 and 22:5n-3 of 2.0 % and 3.2 %, respectively.

*3.7 Effect of different fatty acids on the expressions of *elovl8a* and *elovl8b* in SCHL cells*

The relative expression levels of *elovl8a* and *elovl8b* genes in SCHL cells incubated with different fatty acids, including LA, ALA, ARA, EPA and DHA, were determined using qPCR. Results showed that the transcription level of *elovl8a* was not significantly altered by different fatty acid substrates (Fig. 7A). In contrast, the mRNA expression of *elovl8b* was significantly increased in SCHL cells incubated with LA, ALA, ARA and EPA, and slightly reduced in SCHL cells incubated with DHA compared with the control group of SCHL cells incubated with BSA alone.

*3.8 Effect of dietary lipid sources on the *elovl8b* expression in rabbitfish*

To investigate transcriptional changes of the rabbitfish *elovl8b* gene in response to different dietary lipid sources, we measured the *elovl8b* mRNA levels in the brain, liver, intestine and gill of rabbitfish. The results showed that the expression of *elovl8b* in rabbitfish brain (Fig. 8A), liver (Fig. 8B), intestine (Fig. 8C) and gill (Fig. 8D) of the fish fed with VO was significantly higher than those fed with FO.

4. Discussion

In present study, two novel *elovl* genes were found in rabbitfish and identified as *elovl8a* and *elovl8b*). The complete coding sequence of rabbitfish *elovl8a* was 804-bp encoding a putative 267-aa protein and the coding sequence of rabbitfish *elovl8b* was 792-bp encoding a putative 263-aa protein. The newly cloned *elovl8s* of rabbitfish showed relatively low sequence identity with rabbitfish *elovl4* (49 % ~ 51 %) and *elovl5* (41.9 % ~ 44.9 %), and higher identity with zebrafish *elovl8s* (70.38% ~ 81.4%) (Supplemental Table 3). Multiple alignment suggested that the rabbitfish *elovl8s* were similar to its paralogs of the *elovl4b* and *elovl5* (Monroig et al., 2012), and possess the typical features of the elongase family including the predicted transmembrane domains, the histidine box (HXXHH), and the canonical C-terminal ER retrieval signal (Jakobsson et al., 2006; Monroig et al., 2010; Xue et al., 2014). These findings suggested that rabbitfish *elovl8s* might represent a new member of Elov1 protein family, which we hypothesized could be involved in LC-PUFA biosynthesis in teleosts.

In order to verify our hypothesis, we analyzed the genomic synteny and gene structures of rabbitfish *elovl8s* using a comparative genomic survey method, and then compared these data with *elovl8s* of several different fish species. We found that *elovl8s* were present in some teleosts but not in amphibians, reptiles, birds, and mammals. In addition, an *elovl4*- like gene was found at a similar genetic locus with fish *elovl8a* in an ancient fish, the coelacanth. This suggested that *elovl8* genes may be unique to teleosts, and that they might have arisen from a common ancestral gene, which is the *elovl4*- like gene of sarcopterygii. Two paralogs of *elovl8* were identified in some teleost species, which might be a result of the teleost-specific whole genome duplication event that is well known in fish evolution and is considered as an important driving force of biological evolution (Glasauer and Neuhauss, 2014; Jaillon et al., 2004; Meyer and Van de Peer, 2005, Castro et al., 2016). Furthermore, the rabbitfish *elovl8a* was clearly different from the *elovl8b*, with localization at different genetic loci and gene structure, which confirmed the existence of two *elovl8* genes in the rabbitfish. Interestingly, the older lineages

of teleosts (spotted gar and Asian arowana) have retained only a single copy, specifically an *elovl8a* with features that are more in common with the sarcopterygii, whereas the more recently evolved teleosts (Mexican tetra and channel catfish) also have only one copy, but these were *elovl8b* with more derived features. These results suggested that the *elovl8a* may appear earlier than *elovl8b* in fish evolution, and they may have differential physiological functions. The different gene structures of *elovl8a* and *elovl8b* gene may suggest or reflect differential physiological roles. Compared with the *elovl8a* gene, the gene structures of *elovl8b* were more conserved, consisting of the same number of exon introns, and same ORF length. These findings suggest that the physiological functions of *elovl8* might have been differentiated in the evolutionary process, and that the function of *elovl8b* in LC-PUFA biosynthesis was more conserved than any potential activity of *elovl8a*.

Phylogenetic analysis showed that the *elovl8s* clade was obviously different from other elongases, which separated from the subgroup of *elovl4*, *elovl2*, *elovl6* and *elovl5* clades, suggested *elovl8s* might be a novel type of the Elovl protein family ubiquitously existent in teleost. Meanwhile, the *elovl8s* cluster was further subdivided into two clades of *elovl8a* and *elovl8b*, indicated two different *elovl8* isoforms are widely spread in fishes. Furthermore, we observed that the *elovl8* subgroup shared a closer relationship with *elovl4* cluster which was located at the root of tree, suggested the *elovl8s* might derive from *elovl4* in fish. This may explain why *elovl8* had been previously annotated as an *elovl4*-like gene (Xue et al., 2014). A comprehensive evolutionary study on *elovls* performed in chordates recently showed that the diversification of *elovls* (*elovl2*, *elovl5* and *elovl4*) involved in LC-PUFA biosynthesis in vertebrates was expanded from *elovl 2/5* and *elovl4* in chordate ancestry (Castro et al., 2016). However, searches in silico strongly suggest that the *elovl2* gene may have lost (e.g. silenced) in the vast majority of marine fish species (Morais et al., 2009; Monroig et al., 2011). In contrast, most of fishes appear to possess at least one copy of *elovl8s*, and two isoforms of

elovl8 are presented in rabbitfish. It is uncertain what mechanism leads fishes to retain *elovl8* instead of *elovl2* gene selectively, but it is reasonable to speculate that the ubiquitous existence *elovl8* genes might act in the biosynthesis of LC-PUFA in teleost in order to compensate the physiological functions of lost *elovl2*.

Tissue distribution experiment indicated that *elovl8s* were widely distributed in all examined tissues in rabbitfish, and the *elovl8a* was highly expressed in heart and spleen while *elovl8b* was mainly distributed in the brain, eye (possibly retina) and liver. The different distribution patterns suggested these two *elovl8* isoforms could play various roles in rabbitfish. The high transcription of rabbitfish *elovl8b* but not *elovl8a* in the brain, eye and liver further supported the hypothesis that *elovl8b* may play an important role in LC-PUFA biosynthesis, as these tissues are major metabolic sites for the biosynthesis of LC-PUFA in teleosts (Carmona-Antoñanzas et al., 2011; Monroig et al., 2010, 2011, 2012). Interestingly, the tissue distribution of *elovl8b* in rabbitfish was similar to the tissue distribution of *elovl5* in the majority of fish species including rabbitfish (Gregory et al., 2010; Mohd-Yusof et al., 2010; Zheng et al., 2009; Monroig et al., 2012), which may suggest that *elovl8b* could play a similar role to *elovl5* in other fish species.

Functional characterization in yeast showed that rabbitfish Elovl8a had no ability to utilize all the added substrates including C18-PUFAs, C20-PUFAs and C22-PUFAs, suggesting Elovl8a do not participate in the process of LC-PUFA biosynthesis in rabbitfish. Meanwhile, these findings further supported the evolutionary status and distribution pattern of the *elovl8a* in rabbitfish. However, the *elovl8a* was extensively transcribed in majority of examined tissues, suggesting the protein may play important roles in other aspects and its exact roles are still unknown and more researches are needed to declare. Additionally, Elovl8b was shown to have the ability to convert C18 PUFA (18:2n-6, 18:3n-3 and 18:4n-3) and C20 PUFA (20:4n-6 and 20:5n-3) to longer-chain PUFAs, suggesting Elovl8b should be involved in LC-

PUFA biosynthesis in rabbitfish. Usually, *elovl5* and *elovl4* have been regarded as the primary enzymes for the elongation of C18 and C20 PUFAs in fish (Monroig et al., 2012; Castro et al., 2016). In our previous study, we found rabbitfish *Elovl4* and *Elovl5* possessed all elongation properties in LC-PUFA biosynthesis with high conversion efficiency (Monroig et al., 2012). The present study reveals that except for *elovl5* and *elovl4*, the *elovl8b* also participates in LC-PUFA biosynthesis. However, the low efficiency of *Elovl8b* to utilize the fatty acid substrates, suggesting *Elovl8b* may play as an alternative enzyme involved in LC-PUFA biosynthesis in the main metabolism tissues. Moreover, *elovl8b* was found to be widely expressed, suggesting this gene may also play important roles in other physiological processes.

To further clarify the functional differences between rabbitfish *elovl8a* and *elovl8b* in LC-PUFA biosynthesis, expression levels of *elovl8a* and *elovl8b* were determined in SCHL cells incubated with different PUFA, including LA, ALA, ARA, EPA and DHA. We found the transcriptional level of *elovl8a* was not significantly altered by different fatty acid substrates, which further confirmed that the rabbitfish *elovl8a* lacked the ability to biosynthesize LC-PUFA. In contrast, the mRNA expression of *elovl8b* was significantly up-regulated by LA, ALA, ARA and EPA, and slightly down-regulated by DHA. These data indicated that *elovl8b* could be actively involved in the LC-PUFA biosynthesis pathway as its expression was stimulated by the C18, LA and ALA, and C20, ARA and EPA, pathway substrate fatty acids and inhibited by the pathway product fatty acid, DHA.

Additionally, *in vivo* experiment showed that the expression levels of *elovl8b* in rabbitfish tissues were significantly affected by dietary lipid source, similar to other *elovl* genes in other fish species (Kuah et al., 2015; Xue et al., 2014; Xie et al., 2016). We herein showed that the expression of *elovl8b* in rabbitfish brain, liver, intestine and gill in rabbitfish fed VO were significantly higher than those fish fed FO. Compared with the FO that is rich in EPA and DHA, VO have no n-3 LC-PUFA, but are generally rich in C18 PUFA, LA and/or ALA

(Izquierdo et al., 2003; Raso and Anderson, 2003; Tocher, 2003). Therefore, the LC-PUFA biosynthesis pathway of rabbitfish was stimulated by dietary VO, which might be caused by a compensatory mechanism to meet the lower dietary levels of essential LC-PUFAs. Rabbitfish *elovl8b*, as a potential elongase gene involved in LC-PUFA biosynthesis, was higher expressed in fish fed with VO, which might be a physiological adaptation of this fish to the deficiencies of dietary LC-PUFA through increased LC-PUFA biosynthesis. These findings were consistent with our previous report that the transcriptions of LC-PUFAs biosynthesis related genes ($\Delta 4$ *fad*, $\Delta 6/5$ *fad* and *elovl5*) were significantly higher in rabbitfishes fed with VO than those of that in fishes fed with FO (Xie et al., 2015), suggesting *elovl8b* is also involved in LC-PUFAs biosynthesis.

5. Conclusion

In the present study, we identified *elovl8a* and *elovl8b* genes from the rabbitfish and functionally investigated their potential roles in response to different nutritional states for the first time. Our data confirmed that the *elovl8* genes are unique to teleosts, and their physiological functions have been differentiated. The rabbitfish Elov18b retained the ability to elongate C18 (18:2n-6, 18:3n-3 and 18:4n-3) and C20 (20:4n-6 and 20:5n-3) PUFA to longer-chain fatty acids whereas Elov18a has lost this ability. Based on these results, we can conclude that the *elovl8b* as a novel member of Elov1 protein family involved in the LC-PUFA biosynthesis pathway in rabbitfish. Therefore, this systematic study of *elovl8*'s elongation function towards C18 and C20 PUFAs, provided an alternative pathway for LC-PUFA biosynthesis in fish species (Fig. 9). Furthermore, the functional characterization of Elov18b protein increases the number of Elov1 enzymes already known to participate in LC-PUFA synthesis in fish, which provides a novel insight into the mechanisms of LC-PUFA biosynthesis in teleost.

Acknowledgments

This work was financially supported by the National Key R&D Program of China (2018YFD0900400), National Natural Science Foundation of China (No. 31873040), Natural Science Foundation of Guangdong Province (2018A030313910), China Agriculture Research System (CARS-47), and Guangdong Agriculture Research System (2019KJ150).

References

- Agaba, M., Tocher, D.R., Dickson, C.A., Dick, J.R., Teale, A.J., 2004. Zebrafish cDNA encoding multifunctional fatty acid elongase involved in production of eicosapentaenoic (20:5n-3) and docosahexaenoic (22:6n-3) acids. *Mar. Biotechnol.* 6(3), 251-261.
- Agaba, M.K., Tocher, D.R., Zheng, X., Dickson, C.A., Dick, J.R., Teale, A.J., 2005. Cloning and functional characterisation of polyunsaturated fatty acid elongases of marine and freshwater teleost fish. *Comp. Biochem. Physiol. B Biochem. Mol. Biol.* 142(3), 342-352.
- Carmona-Antoñanzas, G., Monroig, Ó., Dick, J.R., Davie, A., Tocher, D., 2011. Biosynthesis of very long-chain fatty acids (C> 24) in Atlantic salmon: Cloning, functional characterisation, and tissue distribution of an Elovl4 elongase. *Comp. Biochem. Physiol. B Biochem. Mol. Biol.* 159(2), 122-129.
- Castro, L.F.C., Tocher, D.R., Monroig, O., 2016. Long-chain polyunsaturated fatty acid biosynthesis in chordates: Insights into the evolution of Fads and Elovl gene repertoire. *Prog. Lipid Res.* 62, 25-40.
- Christie, W.W., 2003. *Lipid Analysis*, 3rd ed., Oily Press, Bridgwater.
- Clavelle, T., Lester, S.E., Gentry, R., Froehlich, H.E., 2019. Interactions and management for the future of marine aquaculture and capture fisheries. *Fish Fish.* 20(2), 368-388.
- Glasauer, S.M., Neuhauss, S.C., 2014. Whole-genome duplication in teleost fishes and its evolutionary consequences. *Mol. Genet. Genomic.* 289(6), 1045-1060.
- Gregory, M.K., James, M.J., 2014. Rainbow trout (*Oncorhynchus mykiss*) Elovl5 and Elovl2 differ in selectivity for elongation of omega-3 docosapentaenoic acid. *BBA-Mol. Cell Biol. L.* 1841(12), 1656-1660.

- Gregory, M.K., See, V.H., Gibson, R.A., Schuller, K.A., 2010. Cloning and functional characterisation of a fatty acyl elongase from southern bluefin tuna (*Thunnus maccoyii*). *Comp. Biochem. Physiol. B Biochem. Mol. Biol.* 155(2), 178-185.
- Guillou, H., Zadravec, D., Martin, P.G., Jacobsson, A., 2010. The key roles of elongases and desaturases in mammalian fatty acid metabolism: Insights from transgenic mice. *Prog. Lipid Res.* 49(2), 186-199.
- Hall, T., Biosciences, I., Carlsbad, C., 2011. BioEdit: an important software for molecular biology. *GERF Bull Biosci.* 2(1), 60-61.
- Hastings, N., Agaba, M., Tocher, D.R., Leaver, M.J., Dick, J.R., Sargent, J.R., Teale, A., 2001. A vertebrate fatty acid desaturase with $\Delta 5$ and $\Delta 6$ activities. *P. Nat. Acad. Sci. USA.* 98(25), 14304-14309.
- Hastings, N., Agaba, M.K., Tocher, D.R., Zheng, X., Dickson, C.A., Dick, J.R., Teale, A.J., 2004. Molecular cloning and functional characterization of fatty acyl desaturase and elongase cDNAs involved in the production of eicosapentaenoic and docosahexaenoic acids from α -linolenic acid in Atlantic salmon (*Salmo salar*). *Mar. Biotechnol.* 6(5), 463-474.
- Henriques, J., Dick, J.R., Tocher, D.R., Bell, J.G., 2014. Nutritional quality of salmon products available from major retailers in the UK: content and composition of n-3 long-chain PUFA. *Brit. J. Nutr.* 112(6), 964-975.
- Izquierdo, M.S., Obach, A., Arantzamendi, L., Montero, D., Robaina, L., Rosenlund, G., 2003. Dietary lipid sources for seabream and seabass: growth performance, tissue composition and flesh quality. *Aquacult. Nutr.* 9(6), 397-407.
- Jaillon, O., Aury, J.M., Brunet, F., Petit, J.L., Stange-Thomann, N., Mauceli, E., Bouneau, L., Fischer, C., Ozouf-Costaz, C., Bernot, A., Nicaud, S., Jaffe, D., Fisher, S., Lutfalla, G., Dossat, C., Segurens, B., Dasilva, C., Salanoubat, M., Levy, M., Boudet, N., Castellano, S., Anthouard, V., Jubin, C., Castelli, V., Katinka, M., Vacherie, B., Biemont, C., Skalli, Z., Cattolico, L., Poulain, J., De Berardinis, V., Cruaud, C., Duprat, S., Brottier, P., Coutanceau, J.P., Gouzy, J., Parra, G., Lardier, G., Chapple, C., McKernan, K.J., McEwan, P., Bosak, S., Kellis, M., Volff, J.N., Guigo, R., Zody, M.C., Mesirov, J., Lindblad-Toh, K., Birren, B., Nusbaum, C., Kahn, D., Robinson-Rechavi, M., Laudet, V., Schachter, V., Quetier, F., Saurin, W., Scarpelli, C., Wincker, P., Lander, E.S., Weissenbach, J., Roest Crollius, H., 2004. Genome duplication in the teleost fish *Tetraodon nigroviridis* reveals the early vertebrate proto-karyotype. *Nature.* 431, 946-957.

- Jakobsson, A., Westerberg, R., Jacobsson, A., 2006. Fatty acid elongases in mammals: their regulation and roles in metabolism. *Prog. Lipid Res.* 45(3), 237-249.
- Jin, M., Monroig, O., Navarro, J.C., Tocher, D.R., Zhou, Q.C., 2017. Molecular and functional characterisation of two elovl4 elongases involved in the biosynthesis of very long-chain (> C24) polyunsaturated fatty acids in black seabream *Acanthopagrus schlegelii*. *Comp. Biochem. Physiol. B Biochem. Mol. Biol.* 212, 41-50.
- Kabeya, N., Yamamoto, Y., Cummins, S. F., Elizur, A., Yazawa, R., Takeuchi, Y., Haga, Y., Satoh, S., Yoshizaki, G., 2015. Polyunsaturated fatty acid metabolism in a marine teleost, Nibe croaker *Nibea mitsukurii*: Functional characterization of Fads2 desaturase and Elovl5 and Elovl4 elongases. *Comp. Biochem. Physiol. B Biochem. Mol. Biol.* 188, 37-45.
- Kim, S.H., Kim, J.B., Jang, Y.S., Kim, S.Y., Roh, .H., Kim, H.U., Lee, K.R., Park, J.S., 2012. Isolation and functional characterization of polyunsaturated fatty acid elongase (AsELOVL5) gene from black seabream (*Acanthopagrus schlegelii*). *Biotechnol. Lett.* 34(2), 261-268.
- Kromhout, D., Yasuda, S., Geleijnse, J.M., Shimokawa, H., 2012. Fish oil and omega-3 fatty acids in cardiovascular disease: do they really work? *Eur. Heart J.* 33(4), 436-443.
- Kuah, M.K., Jaya-Ram, A., Shu-Chien, A.C., 2015. The capacity for long-chain polyunsaturated fatty acid synthesis in a carnivorous vertebrate: Functional characterisation and nutritional regulation of a Fads2 fatty acyl desaturase with $\Delta 4$ activity and an Elovl5 elongase in striped snakehead (*Channa striata*). *BBA-Mol. Cell Biol. L.* 1851(3), 248-260.
- Larkin, M.A., Blackshields, G., Brown, N.P., Chenna, R., McGettigan, P.A., McWilliam, H., Valentin, F., Wallace, I.M., Wilm, A., Lopez, R., Thompson, J.D., Gibson, T.J., Higgins, D.G., 2007. Clustal W and Clustal X version 2.0. *Bioinformatics.* 23, 2947-2948.
- Leonard, A.E., Bobik, E.G., Dorado, J., Kroeger, P.E., Chuang, L.T., Thurmond, J. M., Parker-Barnes, J.M., Das, T., Huang, Y.S., Mukerji, P., 2000. Cloning of a human cDNA encoding a novel enzyme involved in the elongation of long-chain polyunsaturated fatty acids. *Biochem. J.* 350(3), 765-770.
- Leonard, A.E., Kelder, B., Bobik, E.G., Chuang, L.T., Lewis, C.J., Kopchick, J.J., Mukerji, P., Huang, Y.S., 2002., Identification and expression of mammalian long-chain PUFA elongation enzymes. *Lipids* 37(8), 733-740.

- Li, S., Monroig, Ó., Navarro, J.C., Yuan, Y., Xu, W., Mai, K., Tocher, D.R., Ai, Q., 2017. Molecular cloning and functional characterization of a putative Elovl4 gene and its expression in response to dietary fatty acid profiles in orange-spotted grouper *Epinephelus coioides*. *Aquac. Res.* 48(2), 537-552.
- Li, S., Monroig, O., Wang, T., Yuan, Y., Carlos Navarro, J., Hontoria, F., Liao, K., Tocher, D.R., Mai, K., Xu, W., Ai, Q., 2017. Functional characterization and differential nutritional regulation of putative Elovl5 and Elovl4 elongases in large yellow croaker (*Larimichthys crocea*). *Sci Rep.* 7, 2303.
- Li, W., Feng, Z., Song, X., Zhu, W., Hu, Y., 2016. Cloning, expression and functional characterization of the polyunsaturated fatty acid elongase (ELOVL5) gene from sea cucumber (*Apostichopus japonicus*). *Gene* 593(1), 217-224.
- Li, Y., Monroig, O., Zhang, L., Wang, S., Zheng, X., Dick, J. R., You, C.H., Tocher, D. R., 2010. Vertebrate fatty acyl desaturase with $\Delta 4$ activity. *P. Nat. Acad. Sci. USA.* 107(39), 16840-16845.
- Liu, Y., Zhang, Q.H., Dong, Y.W., You, C.H., Wang, S.Q., Li, Y.Q., Li, Y.Y., 2017. Establishment of a hepatocyte line for studying biosynthesis of long-chain polyunsaturated fatty acids from a marine teleost, the white-spotted spinefoot *Siganus canaliculatus*. *J. Fish Boil.* 91(2), 603-616.
- Livak, K., Schmittgen, T., 2000. Analysis of relative gene expression data using real-time quantitative pcr and the 2- $\Delta\Delta$ ct method. *Methods* 25(4).
- Meyer, A., Van de Peer, Y., 2005. From 2R to 3R: evidence for a fish-specific genome duplication (FSGD). *Bioessays* 27(9), 937-945.
- Mohd-Yusof, N.Y., Monroig, O., Mohd-Adnan, A., Wan, K.L., Tocher, D.R., 2010. Investigation of highly unsaturated fatty acid metabolism in the Asian sea bass, *Lates calcarifer*. *Fish Physiol. Bioche.* 36(4), 827-843.
- Monroig, Ó., Kabeya, N., 2018. Desaturases and elongases involved in polyunsaturated fatty acid biosynthesis in aquatic invertebrates: a comprehensive review. *Fisheries Sci.* 84(6), 911-928.
- Monroig, Ó., Rotllant, J., Cerdá-Reverter, J.M., Dick, J.R., Figueras, A., Tocher, D.R., 2010. Expression and role of Elovl4 elongases in biosynthesis of very long-chain fatty acids during zebrafish *Danio rerio* early embryonic development. *BBA-Mol. Cell Biol. L.* 1801(10), 1145-1154.

- Monroig, Ó., Rotllant, J., Sánchez, E., Cerdá-Reverter, J.M., Tocher, D.R., 2009. Expression of long-chain polyunsaturated fatty acid (LC-PUFA) biosynthesis genes during zebrafish *Danio rerio* early embryogenesis. *BBA-Mol. Cell Biol. L.* 1791(11), 1093-1101.
- Monroig, Ó., Tocher, D.R., Hontoria, F., Navarro, J.C., 2013. Functional characterisation of a Fads2 fatty acyl desaturase with $\Delta 6/\Delta 8$ activity and an Elovl5 with C16, C18 and C20 elongase activity in the anadromous teleost meagre (*Argyrosomus regius*). *Aquaculture* 412, 14-22.
- Monroig, Ó., Wang, S., Zhang, L., You, C., Tocher, D.R., Li, Y., 2012. Elongation of long-chain fatty acids in rabbitfish *Siganus canaliculatus*: Cloning, functional characterisation and tissue distribution of Elovl5-and Elovl4- like elongases. *Aquaculture* 350, 63-70.
- Monroig, Ó., Webb, K., Ibarra-Castro, L., Holt, G.J., Tocher, D.R., 2011. Biosynthesis of long-chain polyunsaturated fatty acids in marine fish: Characterization of an Elovl4-like elongase from cobia *Rachycentron canadum* and activation of the pathway during early life stages. *Aquaculture* 312(1-4), 145-153.
- Morais, S., Monroig, O., Zheng, X., Leaver, M.J., Tocher, D.R., 2009. Highly unsaturated fatty acid synthesis in Atlantic salmon: characterization of ELOVL5-and ELOVL2-like elongases. *Mar. Biotechnol.* 11(5), 627-639.
- Morais, S., Mourente, G., Ortega, A., Tocher, J.A., Tocher, D.R., 2011. Expression of fatty acyl desaturase and elongase genes, and evolution of DHA: EPA ratio during development of unfed larvae of Atlantic bluefin tuna (*Thunnus thynnus* L.). *Aquaculture* 313(1-4), 129-139.
- Nugteren, D.H., 1965. The enzymic chain elongation of fatty acids by rat- liver microsomes. *BBA-Lipid Lipid Met.* 106(2), 280-290.
- Ou, J., Tu, H., Shan, B., Luk, A., DeBose-Boyd, R.A., Bashmakov, Y., Goldstein, J.L., Brown, M.S., 2001. Unsaturated fatty acids inhibit transcription of the sterol regulatory element-binding protein-1c (SREBP-1c) gene by antagonizing ligand-dependent activation of the LXR. *P. Nat. Acad. Sci. USA.* 98(11), 6027-6032.
- Raso, S., Anderson, T.A., 2003. Effects of dietary fish oil replacement on growth and carcass proximate composition of juvenile barramundi (*Lates calcarifer*). *Aquac. Res.* 34(10), 813-819.
- Sprague, M., Dick, J.R., Tocher, D.R., 2016. Impact of sustainable feeds on omega-3 long-chain fatty acid levels in farmed Atlantic salmon, 2006-2015. *Sci. Rep.* 6, 21892.

- Tamura, K., Stecher, G., Peterson, D., Filipski, A., Kumar, S., 2013. MEGA6: molecular evolutionary genetics analysis version 6.0. *Mol. Boil. Evol.* 30(12), 2725-2729.
- Tocher, D.R., 2010. Fatty acid requirements in ontogeny of marine and freshwater fish. *Aquac. Res.* 41(5), 717-732.
- Tocher, D.R., 2003. Metabolism and functions of lipids and fatty acids in teleost fish. *Rev. Fish. Sci.* 11(2), 107-184.
- Vagner, M., Santigosa, E., 2011. Characterization and modulation of gene expression and enzymatic activity of delta-6 desaturase in teleosts: A review. *Aquaculture* 315(1-2), 131-143.
- Wen, Z. Y., Wang, J., Bian, C., Zhang, X., Li, J., Peng, Y., Zhan, Q., Shi, Q., Li, Y. Y., 2019. Molecular cloning of two *kcnk3* genes from the Northern snakehead (*Channa argus*) for quantification of their transcriptions in response to fasting and refeeding. *Gen. Comp. Endocrinol.* 281, 49-57.
- Xie, D., Wang, S., You, C., Chen, F., Tocher, D.R., Li, Y., 2015. Characteristics of LC-PUFA biosynthesis in marine herbivorous teleost *Siganus canaliculatus* under different ambient salinities. *Aquacult. Nutr.* 21, 541-551.
- Xie, D., Chen, F., Lin, S., You, C., Wang, S., Zhang, Q., Monroig, Ó., Tocher, D.R., Li, Y., 2016. Long-chain polyunsaturated fatty acid biosynthesis in the euryhaline herbivorous teleost *Scatophagus argus*: Functional characterization, tissue expression and nutritional regulation of two fatty acyl elongases. *Comp. Biochem. Physiol. B Biochem. Mol. Biol.* 198, 37-45.
- Xue, X., Feng, C. Y., Hixson, S.M., Johnstone, K., Anderson, D.M., Parrish, C.C., Rise, M.L., 2014. Characterization of the fatty acyl elongase (*elovl*) gene family, and hepatic *elovl* and delta-6 fatty acyl desaturase transcript expression and fatty acid responses to diets containing camelina oil in Atlantic cod (*Gadus morhua*). *Comp. Biochem. Physiol. B Biochem. Mol. Biol.* 175, 9-22.
- Yan, J., Liang, X., Cui, Y., Cao, X., Gao, J., 2018. *Elov14* can effectively elongate C18 polyunsaturated fatty acids in loach *Misgurnus anguillicaudatus*. *Biochem. Bioph. Res. Co.* 495(4), 2637-2642.
- Zheng, X., Ding, Z., Xu, Y., Monroig, O., Morais, S., Tocher, D.R., 2009. Physiological roles of fatty acyl desaturases and elongases in marine fish: characterisation of cDNAs of fatty acyl $\Delta 6$ desaturase and *elov15* elongase of cobia (*Rachycentron canadum*). *Aquaculture* 290(1-2), 122-131.

A

```

1 ATGAAGGCACTCACTATGTGGCAGAAATTACAGCTCTTCTACCGGGGATTCTGGAAATGGAGACAAGAGGACCGACGACTGGCTGCTG 90
1 M K A L T M W Q K L Q L F Y R G I L E N G D K R T D D W L L 30
91 GTCTACTCTCTGTGCCAATCAGCAGCATCTTTCTCTGCTACCTCATCATTATATGGTTGGGACCAAAGCTGATGGCAAAAAGGCAGCCA 180
31 V Y S P V P I S S I F L (C) Y L I I I W L G P K L M A K R Q P 60
181 GTCAACCTGAAACCTATCCTGATAGTTTACAACCTCGCCATGGTCTGCCTGTCTGCCTACATGTTCTATGAGTTCACAGCTTCTTCTG 270
61 V N L K P I L I V Y N F A M V (C) L S A Y M F Y E F T A S S W 90
271 TTGGCCAGATACAGCGTGTGTGCCAGCCAGTGGACTACAGTAGCAGCCACTAGCCATGAGGATGGCAAGAGTGTGCTGGTGGTTCTAT 360
91 L A R Y S V L (C) Q P V D Y S S S P L A M R M A R V (C) W W F Y 120
361 TTCTCAAAGTGATAGAGCTCAGTGACACTATATTTTTCATCTGAGGAAAAAGAACATCAGCTGACTTTCCTCCACGCTACCACCAC 450
121 F S K V I E L S D T I F F I L R K K N N Q L T F L H V Y H H 150
451 GCCACCATGATCTTCAACTGGTGGGCTGGGGTCAATATGTGGCTGGTGGCCAATCATTCTCAATCGGTTTGATCAACTCCCTGGTCCAC 540
151 A T M I F N W W A G V K Y V A G G Q S F L I G L I N S L V H 180
541 GTAGTCATGTACTTGTACTACGGCCTGGCAGCTTTTGGACCAAGCATGACTAAATACCTCTGGTGGAAACGTTACCTCACATGCCCTGCAG 630
181 V V M Y L Y Y G L A A F G P S M T K Y L W W K R Y L T (C) L Q 210
631 CTGCTGCAGTTTTTTCATTGTGACCATCCACACCATTTACAACCTGTTTGGCGACTGTGACTTTCCTGACTCTATGAACGCGGTGGTGTG 720
211 L L Q F F I V T I H T I Y N L F A D (C) D F P D S M N A V V L 240
721 GCCTACTCTCTCAGCCTCATCGCACTCTTCACTAAGTCTTACTACCAGAGCTACTCGCCAAGAAGAAGAGCAAGAAGACCTAG 804
241 A Y S L S L I A L F S N F Y Y Q S Y L A K K K S K K T * 267

```

B

```

1 ATGGCTTCTGCATGGGAAGATGTCTGTGCTAGTGATACCAGAGCTATCTGGATAACGGAGACAAGAGGACGGATCCATGGCTGCTGGTCTAC 90
1 M A S A W E D V L S V Y Q S Y L D N G D K R T D P W L L V Y 30
91 TCCCAGTCCCGTGGCACTCATCTTCTGGTCTACCTCTTTGTGGTCTGGCTCGGCCCTCGTCTGATGCACCACAAACACCTGTTGAC 180
31 S P V P V A L I F L V Y L F V V W L G P R L M H H K Q P V D 60
181 CTCAAAGCTGCTCATAGTTTATAATTTGCGCATGGTGTGGCTGTCTGCGTACATGTGCTATGAGTTCCTGGTCACTTCTCTGGCTTCG 270
61 L K A V L I V Y N F A M V G L S A Y M (C) Y E F L V T S W L S 90
271 AACTACAGCTTCCTTTGCCAGCCTGTAGATTACAGCAGCAGTCCGCTGGCGATGAGGATGGCCAGAGCTTGCTGGTGGTTCTTCTCTCT 360
91 N Y S F L (C) Q P V D Y S S S P L A M R M A R A (C) W W F F F S 120
361 AAGATCATGCAACTCAGCGACAGATCTTCTTCATCTGAGGAAGAAGAACAGTCAGGTGACTTTCCTTCACGTTTACCACCACGCCACC 450
121 K I I E L S D T I F F I L R K K N S Q V T F L H V Y H H A T 150
451 ATGATTTTCAACTGGTGGGCGGAATCAAGTATGTGGCCGGCGGACAGTCGTTCTTCATCGGCGTGGTCAACTCCTTCGTCACGTTGTG 540
151 M I F N W W A G I K Y V A G G Q S F F I G V V N S F V H V V 180
541 ATGTACTCGTACTACGGCCTGGCCGCTTGGGCCCTCACATGCAGAAGTACCTGTGGTGGAAAGAGGTACATCACCTCTCTGCAGCTGGTG 630
181 M Y S Y Y G L A A L G P H M Q K Y L W W K R Y I T S L Q L V 210
631 CAGTTCGTGCTCTTCTCGTGCACACGGGTTACAACCTGTTTCGCTGAGTGTGACTTCCAGACTCCATGAAGTGTGTTGTTCAGTTAC 720
211 Q F V L F L V H T G Y N L F A E (C) D F P D S M N L F V F S Y 240
721 TGTGTCAACCTCATCATCTCTTCACTAAGTCTTACTACCAAGCTACGTCAACAAGAAGAAACAGAAATAA 792
241 (C) V T L I I L F S N F Y Y Q S Y V N K K K Q K * 263

```

Fig. 1. Complete coding sequences and deduced protein sequences of the *elovl8a* (A) and *elovl8b* (B) genes in *S.canaliculatus*. Positions of nucleotides and amino acids are labeled on both sides. Transmembrane conserved domains are boxed. Amino acids sequences in blue type represent the conserved motifs of elongases. Cysteines in the two proteins are signed by circles. The putative endoplasmic reticulum (ER) retrieval signal at the C-terminus is marked by dotted boxes. Asterisk (*) represents the stop codon.

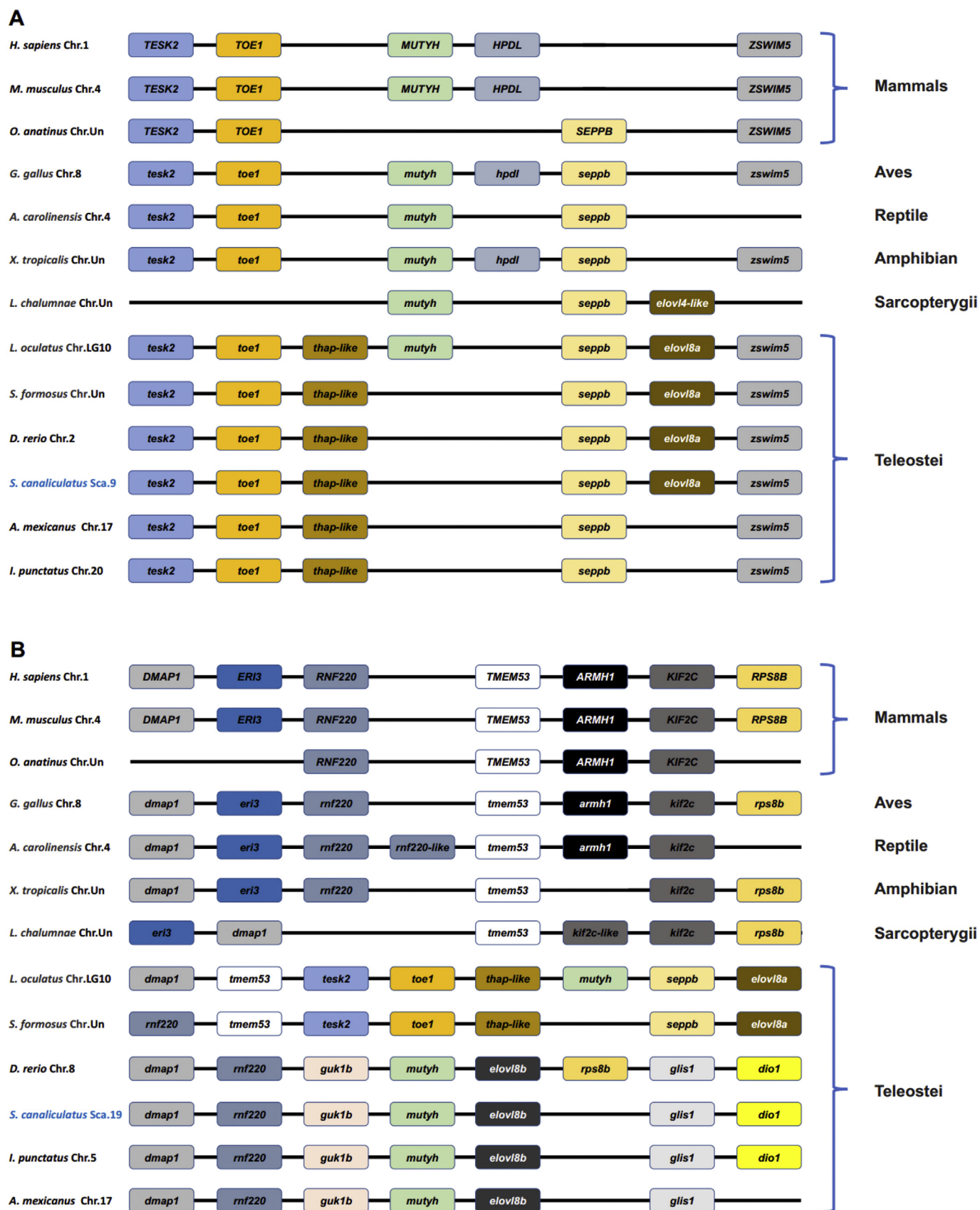


Fig. 3. Synteny comparisons of the *elovl8a* (A) and *elovl8b* (B) genes in vertebrates. The colorful blocks represent different genes. The solid lines represent intergenic regions. The target species in present study are marked in blue type.

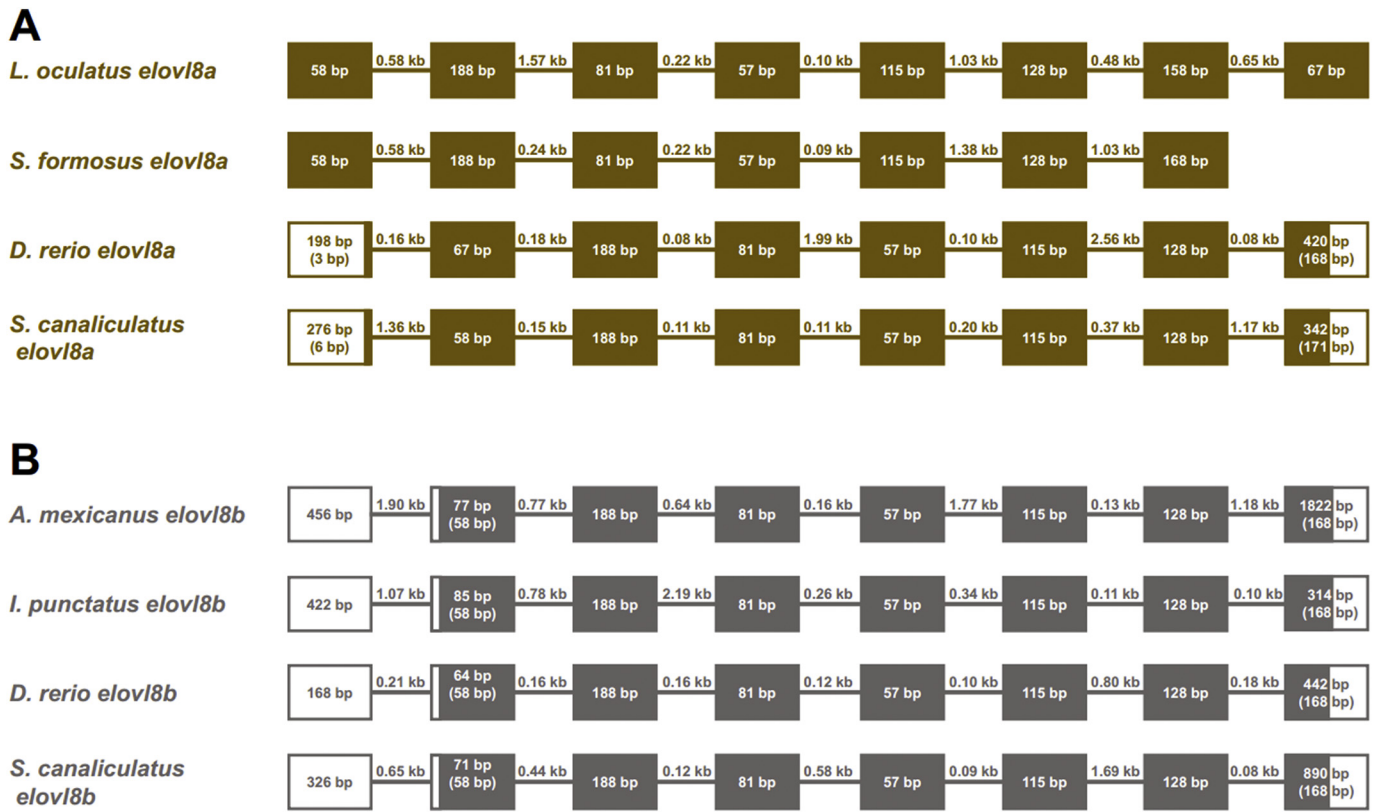


Fig. 4. Comparative analysis of the gene structures of *elovl8a* (A) and *elovl8b* (B) genes among different fish species. The colorful boxes and lines represent the exons and introns, respectively. Boxes in blank indicate the untranslated regions.

Numbers in boxes and on lines represent the length of exons and introns, respectively.

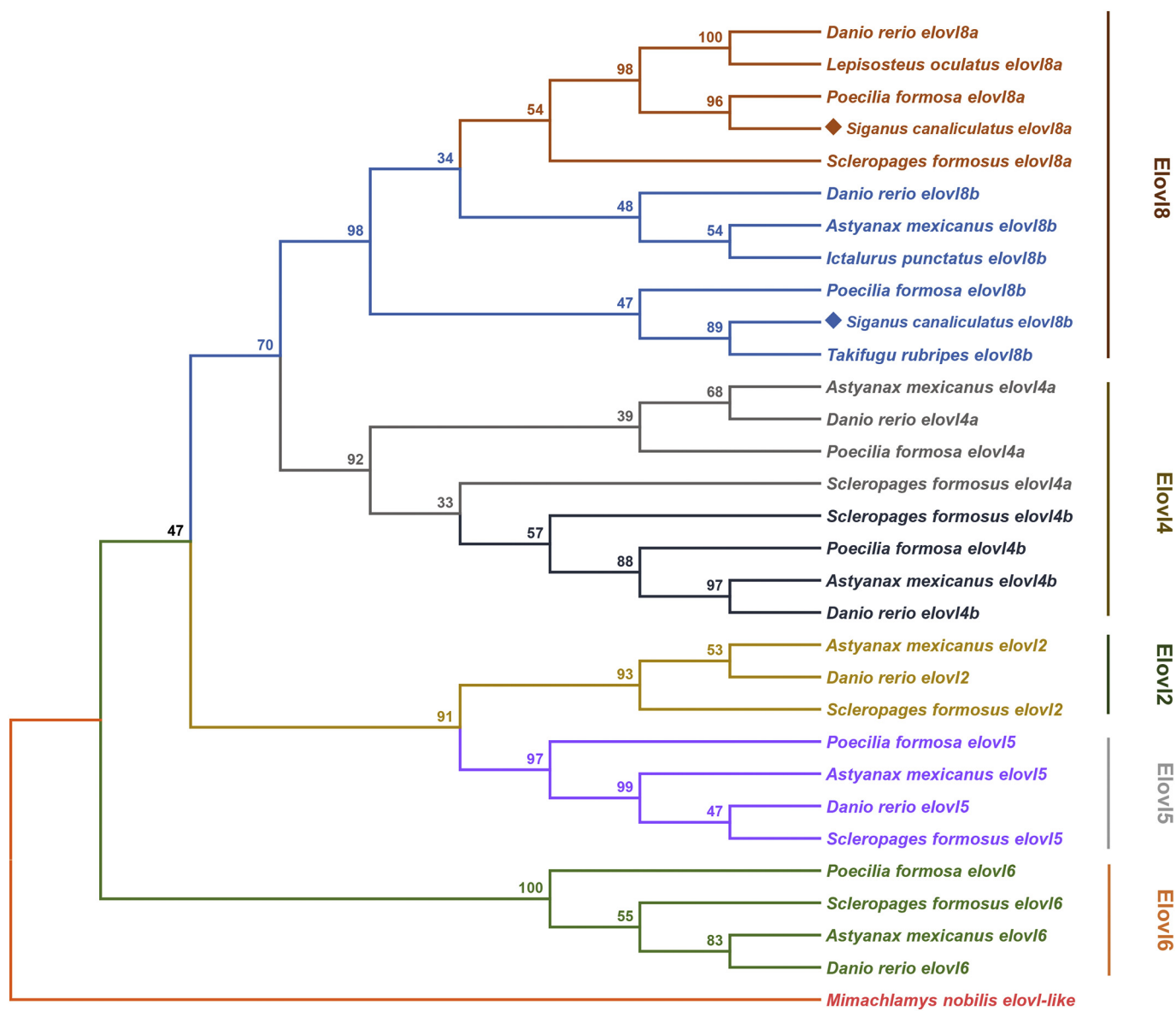


Fig. 5. Phylogenetic tree inferred the relationship of fish five elongase genes. The tree was constructed by Neighbor Joining (NJ) methods based on a dataset of amino acids. Values at the nodes represent bootstrap percentages from 1,000 replicates. The target species are marked by diamonds. *Mimachlamys nobilis* is regarded as the outgroup species

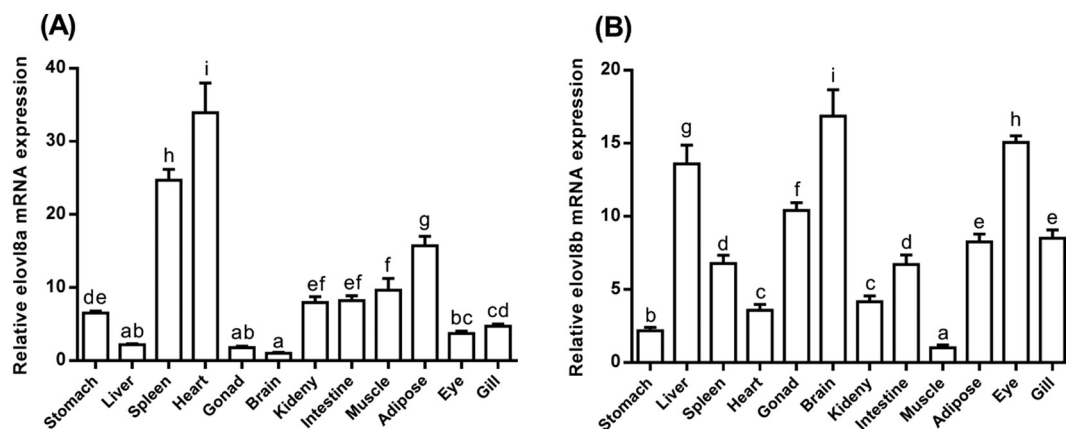
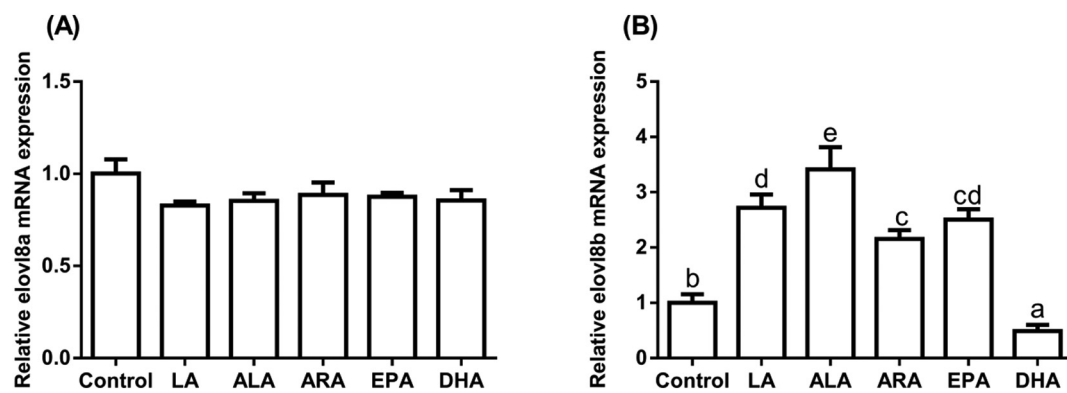


Fig. 6. Relative mRNA expression levels of *elov18a* (A) and *elov18b* (B) genes in different tissues of *S. canaliculatus*. Data are means \pm SEM (n = 6). Different lowercase letters above the bars mean significant differences among different treatments (P < 0.05).

Fig. 7. Relative mRNA expression levels of *elovl8a* (A) and *elovl8b* (B) genes in SCHL incubated with different fatty acids for 24 h. Data are means \pm SEM (n = 6). Different lowercase letters above the bars meant significant differences among different treatments (P < 0.05)



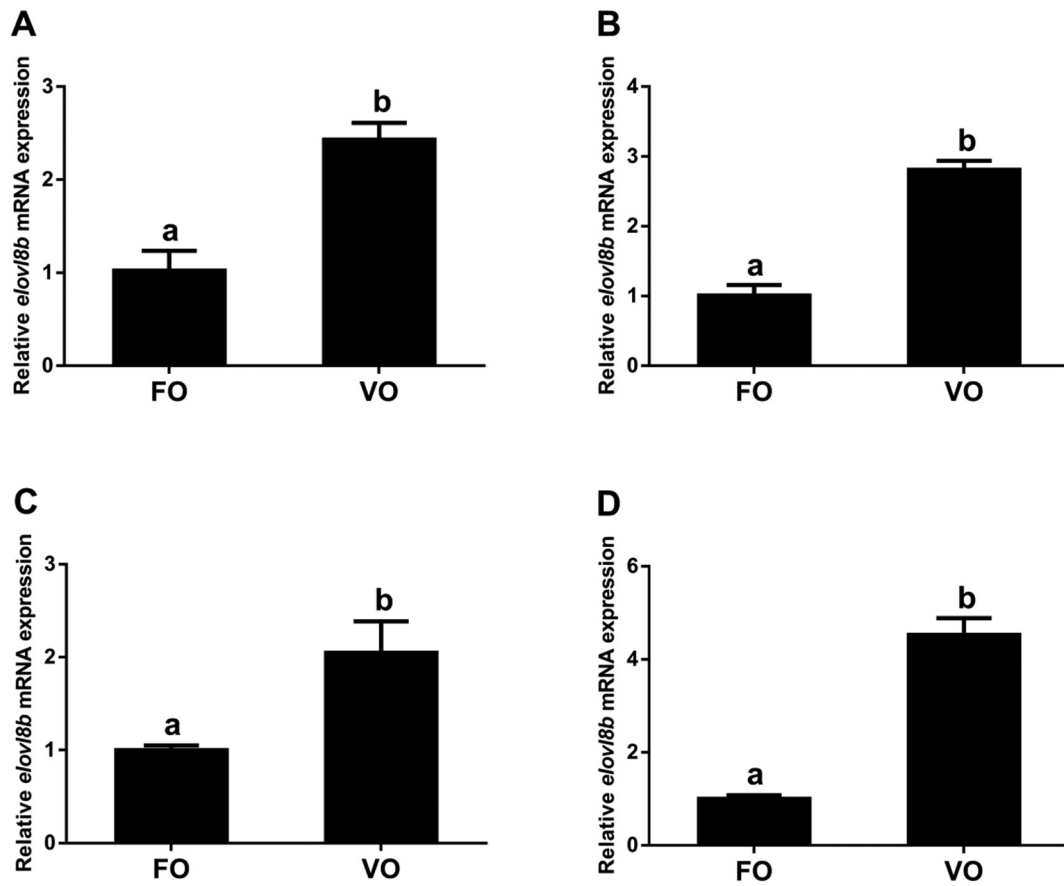


Fig. 8. The expressions of *elovl8b* mRNA in different tissues (A, brain; B, liver; C, intestine; D, gill) of *S. canaliculatus* fed diets containing different lipid sources, respectively. Data are means \pm SEM (n = 6). Different lowercase letters above the bars meant significant differences among different treatments (P < 0.05).

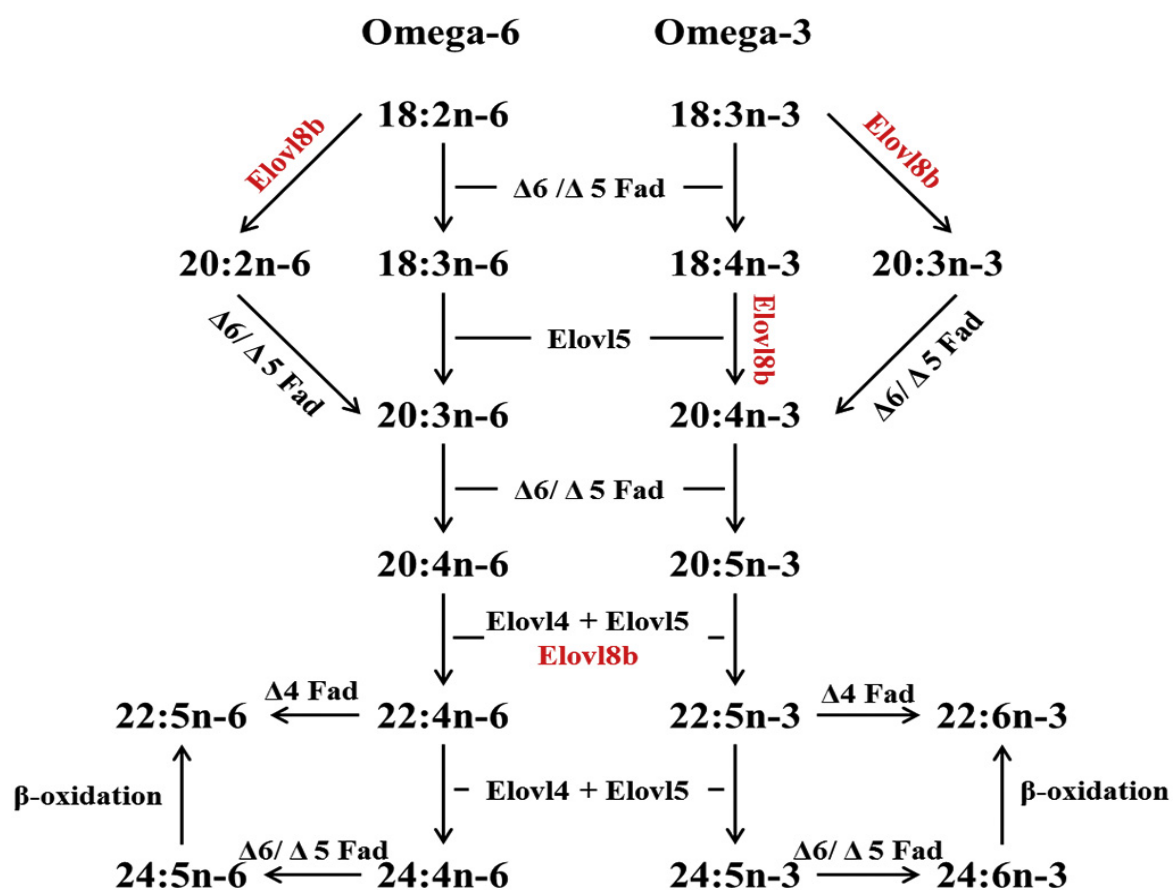


Fig. 9. The biosynthesis pathway of long-chain polyunsaturated fatty acids ($\leq C_{24}$) from linoleic (18:2n-6) and α -linolenic (18:3n-3) acids in rabbitfish. Enzymatic activities shown in the scheme are predicted from heterologous expression in *S. cerevisiae* of the $\Delta 6/\Delta 5$ fatty acyl desaturase ($\Delta 6/\Delta 5$ Fad), the $\Delta 4$ Fad (Li et al., 2010), the Elov14 and Elov15 elongases (Monroig et al., 2012) and the herein reported Elov18b elongases.

Table 1. Functional characterizations of rabbit fish elovl8 elongases: conversions on polyunsaturated fatty acid (FA) substrates.

FA substrate	Product	Elovl8a	Elovl8b	Activity
18:2n-6	20:2n-6	0	2.0	C18 → 20
18:3n-3	20:3n-3	0	3.7	C18 → 20
18:4n-3	20:4n-3	0	3.7	C18 → 20
20:4n-6	22:4n-6	0	2.0	C20 → 22
20:5n-3	22:5n-3	0	3.2	C20 → 22

Results are expressed as a percentage of total FA substrate converted to elongated product.

Author Contributions

Conceptualization, Yuanyou Li and Shuqi Wang; Methodology, Yang Li and Zhengyong Wen; Software, Yang Li and Cuihong You; Validation, Yueling Zhang and Zhiyong Xie; Formal analysis, Douglas R. Tocher and Yueling Zhang; Investigation, Yang Li and Zhengyong Wen; Resources, Cuihong You and Zhiyong Xie; Data curation, Yang Li and Zhengyong Wen; Writing-original draft, Yang Li and Zhengyong Wen; Writing-review and editing, Douglas R. Tocher, Yuanyou Li and Shuqi Wang; Visualization, Yang Li and Zhengyong Wen; Supervision, Yuanyou Li and Shuqi Wang; Project administration, Yuanyou Li and Shuqi Wang; Funding acquisition, Yuanyou Li and Shuqi Wang.

Highlights

1. Two novel fish-specific *elovl8* genes were first identified in *Siganus canaliculatus*.
2. Comprehensive studies revealed two *elovl8* isoforms were widely existed in teleost.
3. Rabbitfish *elovl8a* was highly expressed in heart and spleen, while *elovl8b* was mainly distributed in the brain and eye.
4. Elov18b but not Elov18a was found to have the ability to elongate the LC-PUFA.
5. A new mechanism involved in LC-PUFA biosynthesis was established.