

PAPER • OPEN ACCESS

# Passive breath monitoring of livestock: using factor analysis to deconvolve the cattle shed

To cite this article: Ben Langford *et al* 2022 *J. Breath Res.* **16** 026005

View the [article online](#) for updates and enhancements.

## You may also like

- [Continuous real-time breath analysis in ruminants: effect of eructation on exhaled VOC profiles](#)  
Peter Oertel, Anne Küntzel, Petra Reinhold et al.
- [A Novel Portable Breath Acetone Analyzer Using a MEMS Gas Sensor Array for Fat Loss Monitoring](#)  
Hyung Ju Park, Myung-Joon Kwack, Hyung-Kun Lee et al.
- [Bad breath and exhaled breath analysis—common fields with common denominators](#)  
Mel Rosenberg and Anton Amann

BREATH<sup>®</sup>  
BIOPSY

## Breath Biopsy<sup>®</sup> OMNI

The most advanced, complete solution for  
global breath biomarker analysis

SEE WHAT OMNI  
CAN DO FOR YOU



Expert Study Design  
& Management



Robust Breath  
Collection



Reliable Sample  
Processing & Analysis



In-depth Data  
Analysis



Specialist Data  
Interpretation



## PAPER

## OPEN ACCESS

RECEIVED  
27 October 2021

REVISED  
14 January 2022

ACCEPTED FOR PUBLICATION  
19 January 2022

PUBLISHED  
1 February 2022

Original content from  
this work may be used  
under the terms of the  
[Creative Commons  
Attribution 4.0 licence](#).

Any further distribution  
of this work must  
maintain attribution to  
the author(s) and the title  
of the work, journal  
citation and DOI.



# Passive breath monitoring of livestock: using factor analysis to deconvolve the cattle shed

Ben Langford<sup>1,\*</sup> , James M Cash<sup>1,2</sup>, Georgia Beel<sup>1,3</sup>, Chiara Di Marco<sup>1</sup>, Carol-Anne Duthie<sup>4</sup>, Marie Haskell<sup>4</sup>, Gemma Miller<sup>4</sup>, Laura Nicoll<sup>4</sup>, S Craig Roberts<sup>5</sup> and E Nemitz<sup>1</sup>

<sup>1</sup> UK Centre for Ecology and Hydrology, Penicuik, United Kingdom

<sup>2</sup> School of Chemistry, University of Edinburgh, Edinburgh EH9 3FJ, United Kingdom

<sup>3</sup> Department of Environment and Geography, University of York, Heslington York, YO10 5NG, United Kingdom

<sup>4</sup> SRUC, West Mains Road, Edinburgh EH9 3JG, United Kingdom

<sup>5</sup> Faculty of Natural Sciences, University of Stirling, Stirling, FK9 4LA, United Kingdom

\* Author to whom any correspondence should be addressed.

E-mail: [benngf@ceh.ac.uk](mailto:benngf@ceh.ac.uk)

**Keywords:** volatile organic compounds, positive matrix factorization, PTR-TOF, breath, cattle, respiratory disease

Supplementary material for this article is available [online](#)

## Abstract

Respiratory and metabolic diseases in livestock cost the agriculture sector billions each year, with delayed diagnosis a key exacerbating factor. Previous studies have shown the potential for breath analysis to successfully identify incidence of disease in a range of livestock. However, these techniques typically involve animal handling, the use of nasal swabs or fixing a mask to individual animals to obtain a sample of breath. Using a cohort of 26 cattle as an example, we show how the breath of individual animals within a herd can be monitored using a passive sampling system, where no such handling is required. These benefits come at the cost of the desired breath samples unavoidably mixed with the complex cocktail of odours that are present within the cattle shed. Data were analysed using positive matrix factorisation (PMF) to identify and remove non-breath related sources of volatile organic compounds. In total three breath factors were identified (endogenous-, non-endogenous breath and rumen) and seven factors related to other sources within and around the cattle shed (e.g. cattle feed, traffic, urine and faeces). Simulation of a respiratory disease within the herd showed that the abnormal change in breath composition was captured in the residuals of the ten factor PMF solution, highlighting the importance of their inclusion as part of the breath fraction. Increasing the number of PMF factors to 17 saw the identification of a 'diseased' factor, which coincided with the visits of the three 'diseased' cattle to the breath monitor platform. This work highlights the important role that factor analysis techniques can play in analysing passive breath monitoring data.

## 1. Introduction

### 1.1. Background

The spread of disease among livestock is of major concern for farmers, with zoonotic diseases alone estimated to cost the global economy in excess of \$220 billion over the last decade [1]. The direct costs (e.g. veterinary treatment and management and carcass disposal) only account for a small fraction of this total (20 billion) with the often less obvious indirect costs accounting for the majority. These can include adoption of measures to control the spread of disease, loss of animal productivity and disruption

of supply chains. Wider societal costs include the overuse of antimicrobial drugs, which contributes to growing resistance in bacterial populations and increased greenhouse gas emissions associated with the final product (meat or milk). Therefore, the health of livestock has wide ranging societal impacts affecting not only the economy but the environment and public health.

Many of these impacts can be reduced through timely diagnosis, which allows infected animals to be identified and isolated from the herd which both limits its transmission and allows targeted anti-microbial therapies to be administered. In the UK, most farms



rely on an unstructured assessment of clinical signs carried out by the producer to identify diseased animals [2]. Yet, livestock are adept at concealing illness with clinical symptoms absent in many cases resulting in poor diagnosis rates by farmers [3]. As a result, diagnosis and intervention typically occur late in the course of the disease often leading to poorer outcomes, both in terms of veterinary costs and the long-term performance, health and welfare of the individual [4]. In cattle, as in other livestock, these challenges have led to the increasing practice of metaphylactic anti-microbial therapy, where the entire calf cohort is treated to reduce the overall pathogen burden in both clinical and sub-clinical cases [5]. While this has become an important and effective industry tool for reducing the negative health and performance effects associated with respiratory disease, it is at odds with industry commitments to reduce antimicrobial usage amid the growing concerns of increasing antimicrobial resistance [6].

Several other approaches for early detection of disease in livestock have been investigated, including use of thermography and analysis of behavioural changes. Pyrexia often precedes clinical signs by as much as three days [7] and thermography is viewed by many as a promising diagnostic tool [4]. Indeed, similar temperature-based metrics including thermometric rumen boluses [8, 9] and inner ear temperature probes [10] have also proved excellent at detecting pyrexia when applied to cattle and are thought to offer producers a vital early warning of clinical infection. However, pyrexia is not disease specific and is notably absent in many chronic or sub-clinical cases [7]. Furthermore, thermal changes in animals can be expected due to environmental factors, time of day and have also been linked to stress response. As a result, thermal based approaches currently lack the sensitivity and specificity required for disease detection. Changes in behaviour have also been shown to accompany disease with changes in activity and feeding evident up to three days before clinical signs are shown [11]. However, like pyrexia, these behavioural changes are not specific to the disease state and do not allow causative agents to be identified.

Controlled breath analysis has shown some promise in detecting a range of respiratory and metabolic diseases in cattle [12], sheep [13], pigs [14] and goats [15]. For example, Peled *et al* [12] were able to detect 100% of cattle naturally infected with *Mycobacterium bovis* based on an analysis of breath (with 21% false positives). Their approach used a respiratory mask fitted to the animal for two minutes while an adequate volume of air could be sampled. The use of the mask allows for full control of the sampling process, with inspired air first passed through two charcoal filters to remove background volatile organic compounds (VOCs). However, habituating the animals to the mask takes time and the acquisition of the sample

requires trained personnel to manually handle each animal, which can cause stress.

Other studies have successfully identified four compounds that appear indicative of bovine respiratory disease (phenol, benzothiazole, *p*-cresol and 5-octadecanal) by comparing VOCs emitted from the nasal secretions of healthy cows and those infected with bovine respiratory disease (BRD) [16]. While nasal swabs can be collected relatively easily, they still involve a degree of handling that might otherwise be avoided.

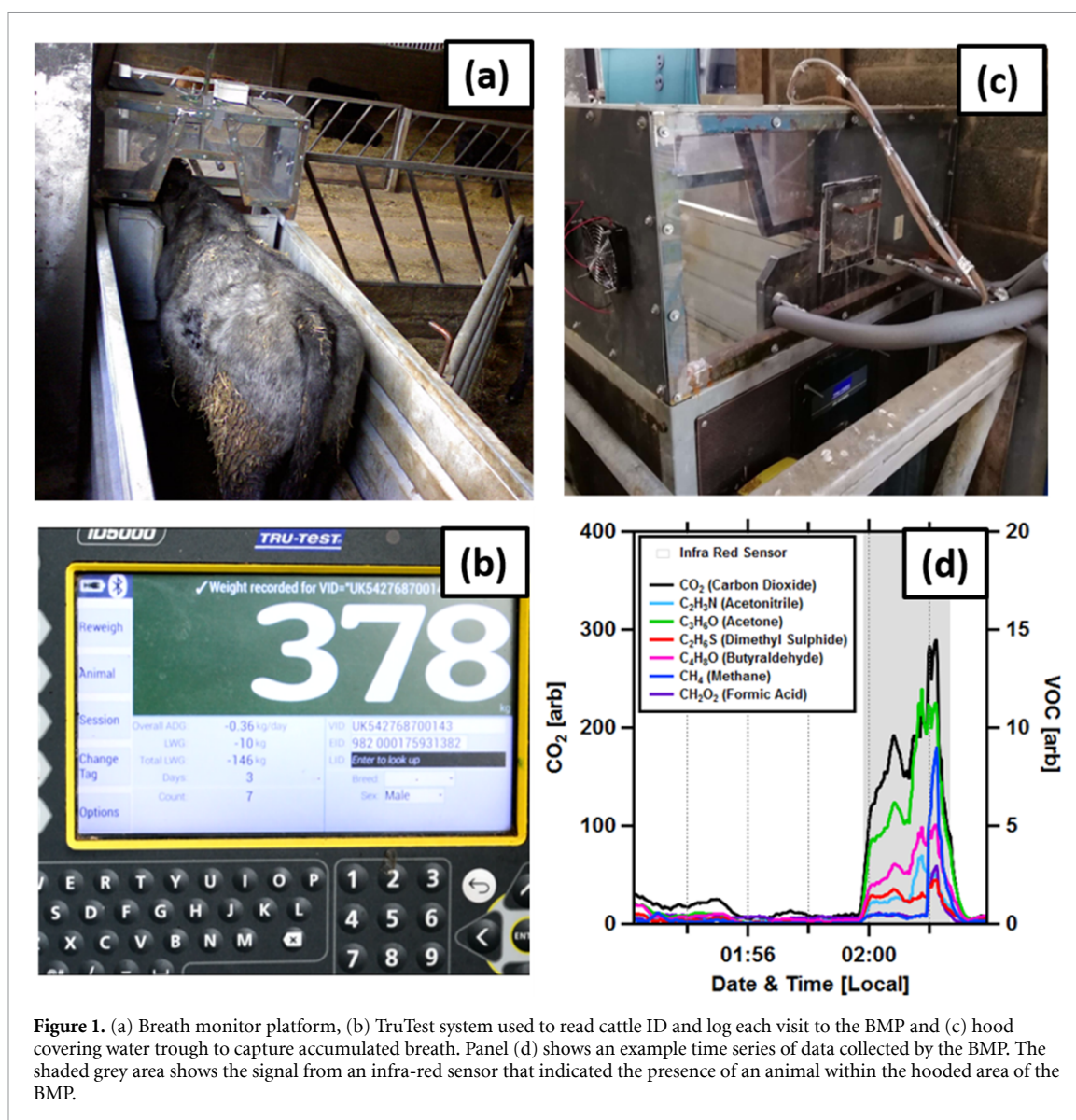
More recently, Gierschner *et al* [17] showed it possible to monitor the health status of an entire herd by sampling the ambient air within a cattle shed to identify the presence of animals infected with paratuberculosis. The concept of 'crowd-based' sampling is attractive because it captures the entire herd's volatileome without the need for handling of individual animals. However, identifying the specific individuals that may be in need of treatment is not possible.

Here we present a breath monitor platform (BMP) that can be used to obtain breath samples from individual animals, with no requirement for handling. In this study our focus is on cattle, but the BMP could be applied to a variety of livestock and for the detection numerous respiratory and metabolic diseases (assuming suitable breath biomarkers are present). This approach avoids the stress associated with animal handling by obtaining samples passively. Although this method does not allow as much control over breath capture as is possible with a respiratory mask, we show how this can be compensated for, using factor analysis methods to identify and remove the non-breath components of the sampled air. Finally, we simulate markers of disease to determine whether individual 'diseased' animals can be identified directly using positive matrix factorization (PMF).

## 2. Method

### 2.1. Breath Monitor Platform

Breath measurements were obtained using a modified Beef Monitor Platform (Ritchie Implements Ltd, Forfar, Scotland), a piece of farm equipment routinely used to track the performance of beef cattle for finishing and hereafter termed the BMP. The platform, shown in figure 1(a), comprises a weigh station with integrated water trough. Its width is designed to allow only one animal access at a time. As an animal enters the platform to drink, its electronic ear tag is automatically read (TruTest, New Zealand) and logged together with its weight, allowing the farmer to track the animal's performance over time (figure 1(b)). The breath monitor differs only by having an enclosed hood over the water trough which allows exhaled breath to accumulate while the animal drinks (figure 1(c)). The exhaled air is then sampled in real-time, in our case by an online mass



**Figure 1.** (a) Breath monitor platform, (b) TruTest system used to read cattle ID and log each visit to the BMP and (c) hood covering water trough to capture accumulated breath. Panel (d) shows an example time series of data collected by the BMP. The shaded grey area shows the signal from an infra-red sensor that indicated the presence of an animal within the hooded area of the BMP.

spectrometer, with the collected data immediately associated with the ID read by the TruTest system (figure 1(d)). Once the cow exits the platform, integrated fans within the hood quickly flush the exhaled air in readiness for the next animal.

## 2.2. VOC measurements

Measurements of VOC concentrations were made using a proton transfer reaction–time-of-flight mass spectrometer with quadrupole ion guide (PTR-QiTOF). The instrument has been described in detail by Jordan *et al* [18] and here we outline only those features pertinent to the experimental setup. The instrument was run in an  $\text{H}_3\text{O}^+$  reagent ion mode with a drift tube pressure, voltage and temperature set to 3.2 mbar, 711 V and 80 °C respectively, yielding an  $E/N$  ratio 120 Td where  $E$  is the electric field and  $N$  is the number density of molecules within the drift tube.

The PTR-QiTOF was housed within a mobile laboratory which was parked adjacent to the cattle

shed. Air from within the breath monitor hood was sampled along a  $\sim 10$  m length of  $\frac{1}{4}$ " O.D. (I.D. 3.2 mm) perfluoroalkoxy tubing at a rate of  $\sim 10$  l  $\text{min}^{-1}$ . In order to limit the adsorption of compounds to the tube walls, the sample lines were wrapped with heating tape and insulated with pipe lagging to maintain a temperature of 60 °C. The PTR-QiTOF subsampled from the main sample line at a rate of 300 ml  $\text{min}^{-1}$  and measured mass-to-charge ratios between  $m/z$  16 and  $m/z$  200 with a 1 s time resolution.

The data were saved in hourly files which were analysed in Tofware (Tofwerks, Switzerland, version 3.2.2). Mass scale alignment was applied every 20 s using the  $\text{NO}^+$  peak ( $m/z$  29.997) and two peaks associated with an internal diiodobenzene standard that is continually bled into the sample air stream ( $(\text{C}_6\text{H}_4\text{I})\text{H}^+$ ,  $m/z$  203.9431 and  $(\text{C}_6\text{H}_4\text{I}_2)\text{H}^+$ ,  $m/z$  330.848). In total, 106 ions were detected that could be assigned a molecular formula within a tolerance of 50 ppm. Among the list were ammonia

((NH<sub>3</sub>)H<sup>+</sup>), carbon dioxide ((CO<sub>2</sub>)H<sup>+</sup>) and methane (CH<sub>4</sub>)H<sup>+</sup>. Ammonia has a proton affinity close to that of water and can undergo back reactions in the drift tube making absolute quantification difficult without additional instruments [19]. Carbon dioxide and methane have proton affinities lower than water and do not typically undergo PTRs. However, they are both present in such high concentrations in breath (ppm), that a small fraction undergo endothermic PTRs at the transition between the drift tube and time-of-flight chamber [20]. This effect is enhanced in instruments with quadrupole ion guides due to the increased energies associated with the ion guide (Markus Mueller, personal communication). The CO<sub>2</sub> concentrations are a key indicator of breath and form a central part of the analysis presented below. However, because the proton transfer is endothermic and inefficient [21], it was not possible to provide accurate concentrations of these species based on the instrument transmission efficiency and no gas standards or ancillary measurements were available for direct calibration. Therefore, CO<sub>2</sub> and NH<sub>3</sub> concentrations are in units of normalised counts per second and all other compounds are presented as mixing ratios.

Normalised counts were calculated as

$$\text{npcs} = 1 \times 10^6 \left( \frac{\text{RH}^+}{\text{M19} + \text{M37}} \right), \quad (1)$$

where RH<sup>+</sup> is the transmission corrected ion signal (cps) and M19 and M37 are the transmission corrected ion counts for the primary ions (H<sub>3</sub>O<sup>+</sup>) and first water cluster (H<sub>3</sub>O<sup>+</sup> + H<sub>2</sub>O<sup>+</sup>), respectively.

### 2.3. PMF

VOC measurements were analysed using PMF [22] to identify and remove non-breath components from the dataset. PMF is a receptor-only, bilinear model that, when applied to PTR-QiTOF data, assumes the total mass spectrum of a quantity measured over time represents the linear combination of a number of discrete sources or 'factors', ( $p$ ) each with a distinct chemical signature (or mass spectral profile) that does not change over time, such that [22]

$$\mathbf{X} = \mathbf{GF} + \mathbf{E}. \quad (2)$$

In the case of VOCs measured within the BMP,  $\mathbf{X}$  comprises the breath sample of interest plus the cattle shed background. In practical terms  $\mathbf{X}$  is a two-dimensional  $m \times n$  matrix, where rows ( $i$ ) are the  $m$  individual one second mass spectra and the columns ( $j$ ) are the counts per second of  $n$  individual ions.  $\mathbf{F}$  is two-dimensional  $p \times n$  matrix that represents a number of mass spectral profiles, or factors, which best describe specific sources within the cattle shed, such as the breath sample, animal waste (e.g. faeces and urine), feed or farm traffic. The relative contribution

of these factors to the total measured odour is given by the elements of an  $m \times p$  matrix,  $\mathbf{G}$ . Accordingly, any change in the measured mass spectrum of the sample air ( $\mathbf{X}$ ) is a consequence of the varying contributions of the individual factors over time plus some residual spectrum,  $\mathbf{E}$  ( $m \times n$ , with elements  $e_{ij}$ ). Here, our objective is to use PMF to identify the non-breath components from the passive sample so they may be removed from the analysis leaving only the desired breath contributions plus any residuals. Importantly, no *a priori* assumptions are made about the mass spectral profile of individual factors or their contribution to the measured signal. Rather, the number of factors ( $p$ ) is decided by the user, with  $\mathbf{F}$  and  $\mathbf{G}$  calculated iteratively to minimize the sum of the squared residuals,  $Q$ , relative to their respective uncertainties as

$$Q = \sum_{i=1}^m \sum_{j=1}^n \left( \frac{e_{ij}}{\sigma_{ij}} \right)^2. \quad (3)$$

Here,  $\sigma_{ij}$  are the uncertainties associated with the individual elements of  $\mathbf{X}$ , which are typically calculated as the signal-to-noise ratio of the individual measurements [22] shown here as

$$\sigma = \alpha \sqrt{\frac{I}{t}}, \quad (4)$$

where  $I$  is the ion signal,  $t$  is the acquisition or dwell time in seconds and the term  $\alpha$  is a factor applied to account for the fact that the signal of a signal ion is not constant, but rather part of a Gaussian distribution of pulse areas. Allan *et al* [23] determined the standard deviation of this distribution to be 0.68 which when convolved with a Poisson distribution yields a value of 1.2.

Data collected from the BMP were here analysed using the PMF evaluation tool described in Ulbrich *et al* [24] which is based upon the PMF2 algorithm that uses a weighted least squares approach. In this particular tool, the maximum size of a data matrix is restricted to 100 000 rows and, therefore, the measured data were first smoothed (three-point box smoothing) and subsequently resampled to three second data reducing the number of measurements. Consequently, the data matrix  $\mathbf{X}$  and error matrix had dimensions of  $m = 70\,000$  and  $n = 106$ .

## 3. Results

### 3.1. Standard analysis

The BMP was trialled over a period of 2.5 days with a herd of 26 beef cattle (10 female, 16 male; 8 Beef Short Horn cross, 14 Aberdeen Angus cross and 4 Limousin cross) aged between 9 and 15 months. Typically, each animal visited the platform four times a day for an average of 3.5 min giving a total breath measurement time over the study of  $\sim 35$  min per individual (see table 1).

**Table 1.** Summary of the 26 cattle used in the study and time spent within the breath monitor platform (BMP) during the 2.5 days of measurements.

Cow #	Breed <sup>a</sup>	Sex	Number of BMP visits (#)	Total time in BMP (min <sup>-1</sup> )	Average time spent in BMP per day (min <sup>-1</sup> )	Average duration of BMP visit (min <sup>-1</sup> )
1	BSX	M	7	28.4	11.4	4.1
2	BSX	M	6	14.0	5.6	2.3
3	AAX	M	12	42.4	16.9	3.5
4	AAX	M	10	45.6	18.2	4.6
5	AAX	M	12	36.0	14.4	3.0
6	AAX	M	14	58.5	23.4	4.2
7	AAX	M	16	52.2	20.9	3.3
8	AAX	M	15	42.0	16.8	2.8
9	BSX	M	14	51.0	20.4	3.6
10	AAX	F	11	28.4	11.3	2.6
11	LX	F	7	20.2	8.1	2.9
12	AAX	F	11	49.2	19.7	4.5
13	AAX	F	10	35.5	14.2	3.6
14	LX	F	10	46.5	18.6	4.6
15	AAX	F	12	43.1	17.2	3.6
16	AAX	F	10	36.4	14.5	3.6
17	AAX	F	7	27.5	11.0	3.9
18	LX	F	9	26.0	10.4	2.9
19	AAX	F	11	65.2	26.1	5.9
20	LX	M	12	51.5	20.6	4.3
21	AAX	M	9	25.9	10.3	2.9
22	BSX	M	13	19.6	7.8	1.5
23	BSX	M	11	36.2	14.5	3.3
24	BSX	M	9	38.1	15.2	4.2
25	BSX	M	15	42.8	17.1	2.9
26	BSX	M	15	56.4	22.5	3.8

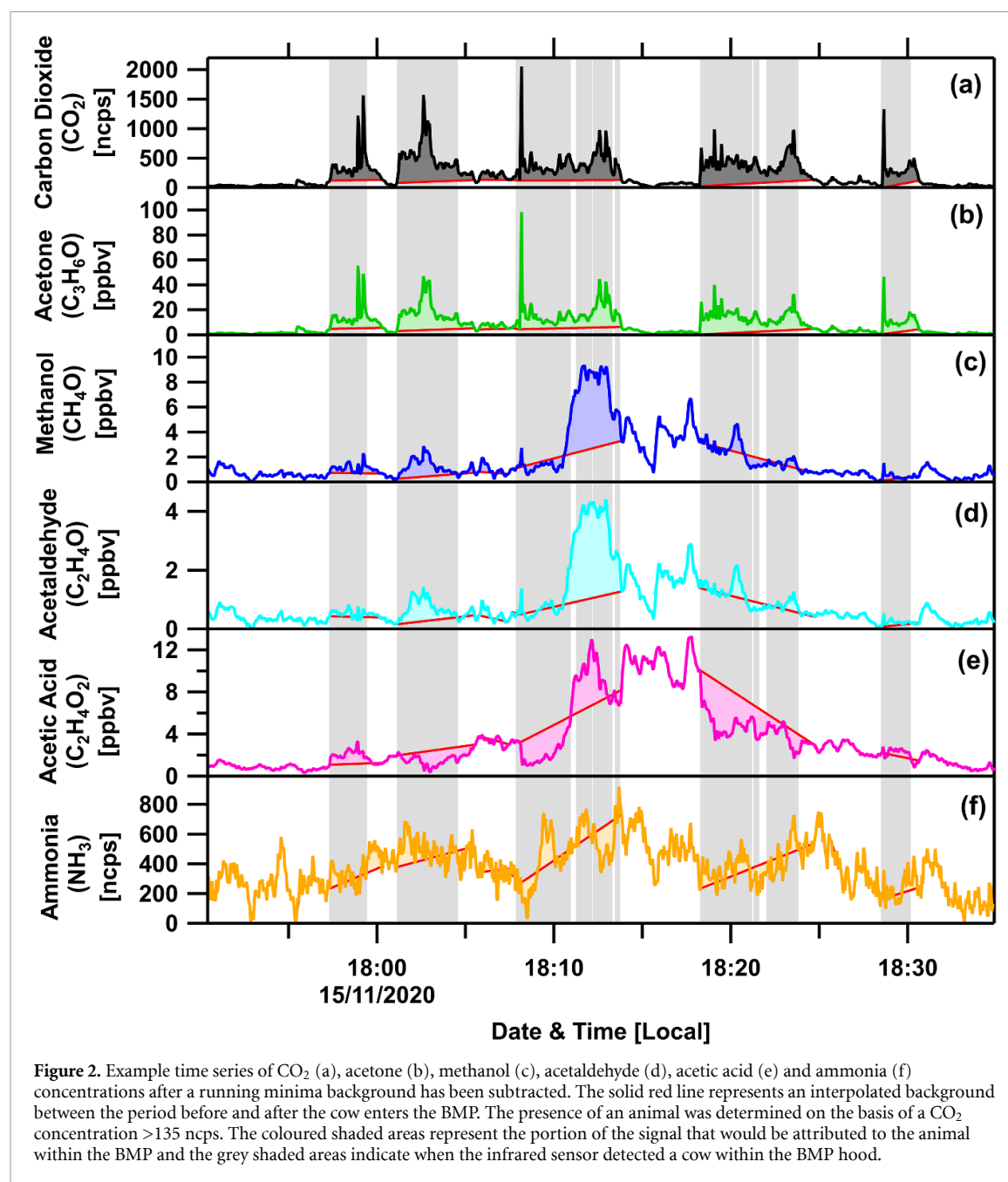
<sup>a</sup> BSX = Beef Short Horn cross; AAX = Aberdeen Angus cross; LX = Limousin cross.

When an animal enters the BMP its breath and body odour accumulate in the headspace above the water trough. The PTR-QiTOF measures these volatiles together with the host of compounds present in the background air. The cattle shed comprises a particularly complex blend of VOCs with a number of strong local background sources that include the animals' waste products (faeces, urine), straw, feed, local farm traffic and the regional background. Removing these non-breath components from the periods where a cow was present within the BMP is not a trivial task, not least because the background odours can vary on a timescale shorter than the average time spent at the water trough. As an initial step, it is necessary to determine the periods when an animal was present in the BMP. An infrared sensor was used to indicate when an animal's head was above the water trough, but this was found to be unreliable due to debris falling onto the reflector and causing false readings. As an alternative, we chose to use the time series of CO<sub>2</sub> signal to indicate the presence of an animal within the BMP based on a threshold value. A low frequency background concentration was established for each compound by calculating a centred running minimum which was subsequently subtracted from the measurements. The running minimum was set to 25 min,

an interval greater than the typical duration of any single visit to the BMP. Figure S1 (available online at [stacks.iop.org/JBR/16/026005/mmedia](https://stacks.iop.org/JBR/16/026005/mmedia)) shows the time series of CO<sub>2</sub> and acetaldehyde measured by the BMP with and without the low frequency background removed.

Removing the low frequency baseline works well for some compounds (e.g. CO<sub>2</sub> and acetone), but it is less successful for others, that have a strong diurnal pattern (e.g. methanol and acetaldehyde), for which further steps are required to isolate the breath sample. One solution is to subtract a background that is calculated as a linear interpolation between the period before and after the animal enters the breath monitor. Figure 2 shows how this works in practice. Here, a CO<sub>2</sub> threshold of 135 ncps is used to indicate the presence of an animal within the BMP. At around 18:05 the CO<sub>2</sub> concentration remains above the threshold despite the infrared sensor (shaded grey areas) not indicating the presence of an animal within the BMP. An analysis of webcam footage showed that in this case, the animal had remained on the platform but had retracted its head from the hooded area. From this position, its breath was still carried into the sample area and detected by the PTR-QiTOF. This was a fairly common occurrence and was a second motivating factor in using a CO<sub>2</sub> threshold to alert of





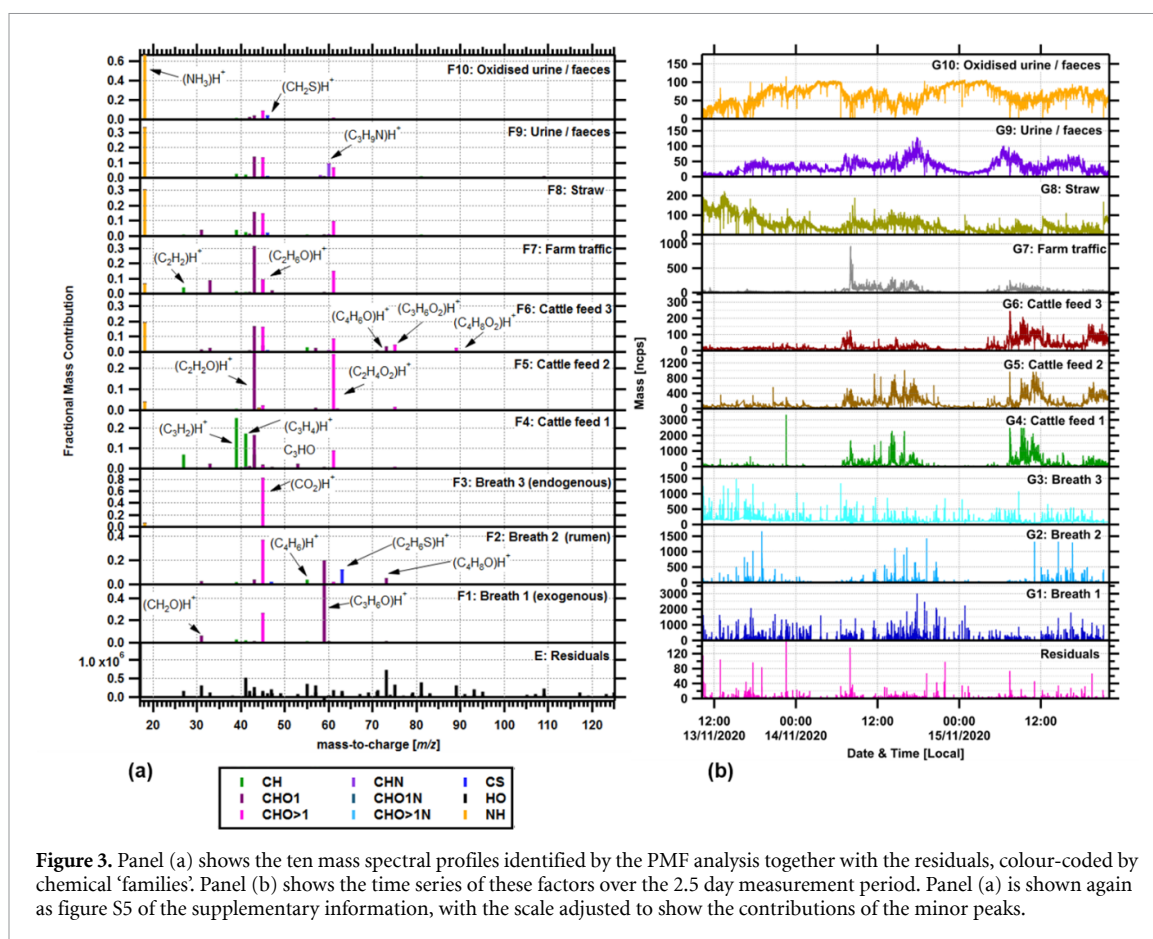
an animal's presence, rather than the signal from the infrared sensor.

The interpolated background works well for compounds that have large breath concentrations relative to the background (e.g. for CO<sub>2</sub> (figure 2(a)) and acetone (figure 2(b))), but is less effective for compounds like ammonia (figure 2(f)), that have a high background relative to the breath component or, in the case of acetic acid (figure 2(e)), that have a background that varies on a similar timescale to a typical visit to the water trough (e.g. 2–4 min). In these situations, the concentrations measured from within the BMP may fall below that of the interpolated background, resulting in a negative breath sample. While uptake of compounds to the lungs of cattle is theoretically possible, acetic acid is a known component of

bovine breath and, therefore, in this instance the negative concentrations can be attributed to a decrease in the background during the visit to the BMP. In such cases, the measured data cannot be reliably attributed to the breath of the animal and, therefore, a different approach is required.

### 3.2. PMF analysis

PMF analysis was applied to the set of VOCs measured from within the BMP to see if factors unrelated to the breath could be identified and removed. The analysis was run iteratively, gradually increasing the number of factors used in the solution until a minimum in the  $Q/Q_{\text{exp}}$  could be achieved (see figure S3 of the SI). The final solution selected had a total of ten factors and the individual mass spectra (**F**) and



their time series (**G**) are shown in figure 3 together with the residuals. A further reduction in the  $Q/Q_{\text{exp}}$  could be achieved in solutions with up to 14 factors. However, moving beyond ten factors did not significantly reduce the residuals as shown in figure S4 of the supplementary information. The robustness of the solution was assessed by varying both the fPeaks (rotations) and initialisation seeds used in the PMF algorithm (Paterro 2005). The  $Q/Q_{\text{exp}}$  showed a clear minimum at the zero fPeak indicating that the solution had found the global minimum. The same ten factors were identified for each initialisation seed and the attribution of variance to each of those factors showed minimal differences indicating the solution to be robust. Based on this analysis uncertainty estimates for each of the three breath factor profiles were established and are shown in section 2.1 of the SI.

Each factor was assessed and named based on its temporal pattern and chemical composition to determine which sources within the cattle shed they might represent. The interpretation of the factor profiles was aided by headspace analysis of potential sources found within the cattle shed which included samples of straw, sawdust (used as bedding in adjacent barns), faeces, saliva and skin swabs (see SI section S3). Quantification of the local sources in this way allows for a more meaningful interpretation of the data, especially in this context where there are no previous studies to compare to. However, this

step is not strictly necessary, because following identification of the factors associated with the BMP, all remaining factors are ultimately removed.

Three factors were associated with animals within the BMP and were identified on the basis of the short-term spikes in concentration that coincided with the periods where animals were accessing the BMP. The identification of more than one breath factor is because the chemical composition of the breath is likely influenced by how recently an animal has fed or whether eructation occurred during the visit, which would release gases from the rumen with a different composition to alveolar breath. Breath factor one was characterised by elevated acetone,  $\text{CO}_2$  and formaldehyde, whereas breath factor three was dominated by  $\text{CO}_2$  and  $\text{NH}_3$ . In contrast, breath factor two had a large contribution from dimethyl sulphide and 2-butanone, two compounds known to be emitted from the rumen during eructation [25]. It is therefore likely that it represents emissions from the rumen, while breath factors one and three are associated with alveolar breath. The fact that breath factor one contains  $(\text{C}_3\text{H}_2)\text{H}^+$  and  $(\text{C}_3\text{H}_4)\text{H}^+$ , two ions that are characteristic of the cattle feed, may indicate that factors two and three separate on the basis of how recently an animal has fed, with factor three representing endogenous breath and factor one contaminated by exogenous sources. The VOCs detected while an animal is within the BMP may also originate from

its skin/fur as well as from extraneous sources, such as urine/faeces that may be present on the animal. These factors therefore may still have some artefacts, but in this instance, these could not be further separated by increasing the number of factors, likely because they are highly correlated in time which PMF cannot resolve.

The dominant odour within the cattle shed originated from the cattle feed which was a blend of silage, whole crop barley, brewer's grains, barley and molasses. The feed mixer dispensed the feed along the edge of the pens at around 08:00 h each day. The cattle typically eat what is in reach and any residual feed is swept closer to the pen, either later in the evening or around 07:00 h the following morning. Factors F4, F5, F6 and F7 each show peaks coinciding with the delivery of the feed, but only factor 4 has significant contributions from the  $(\text{C}_3\text{H}_2)\text{H}^+$   $(\text{C}_3\text{H}_4)\text{H}^+$ ,  $(\text{C}_2\text{H}_2\text{O})\text{H}^+$  and  $(\text{C}_2\text{H}_4\text{O})\text{H}^+$  ions which were found to be characteristic of the feed when samples were analysed in the laboratory (see section S3 of the supplementary information). These same markers ( $(\text{C}_3\text{H}_2)\text{H}^+$  and  $(\text{C}_3\text{H}_4)\text{H}^+$ ) were not particularly prevalent in factors F5 and F6, but the temporal profiles of these factors closely resembled that of the cattle feed factor, but with a reduced contribution to the overall mass. Our hypothesis is that factors F5 and F6 represent either different components of the feed mix that may dry out at different rates (or have different volatilities), or that they represent a more aged or oxidised version of the cattle feed factor. This last assertion is supported by the higher O:C ratios ( $\sim 1.0$ ) of these factors compared to that of factor F4 (O:C = 0.28).

Factor six showed the largest peak associated with the passing of the feed truck on the 14th of November. Our assumption is that this spike is associated with the exhaust fumes that briefly accumulated as the feed truck paused next to the BMP. As well as delivering the feed, there is a constant stream of farm vehicles around the cattle shed which all contribute to this factor as well as emissions from road traffic on the country road (A702) which runs to the east of the farm. The chemical profile of the traffic factor again has a significant contribution from the  $(\text{C}_2\text{H}_2\text{O})\text{H}^+$  ion which could either be ethenone or a fragment of the acetic acid ion and has previously been found as a useful marker of traffic [26, 27]. In addition this factor has much higher contributions of  $\text{CO}_2$  and ammonia (for diesel vehicles with urea catalyst), two further known components of vehicle exhaust. Finally, factor six had the largest contributions of benzene, toluene and xylene (not visible at this scale) giving further evidence of this factor most likely being associated with vehicle emissions.

The final three factors were more difficult to identify with each having strong contributions from ammonia. The mass spectral profiles of factors F9 and F10 were very similar except for a much larger

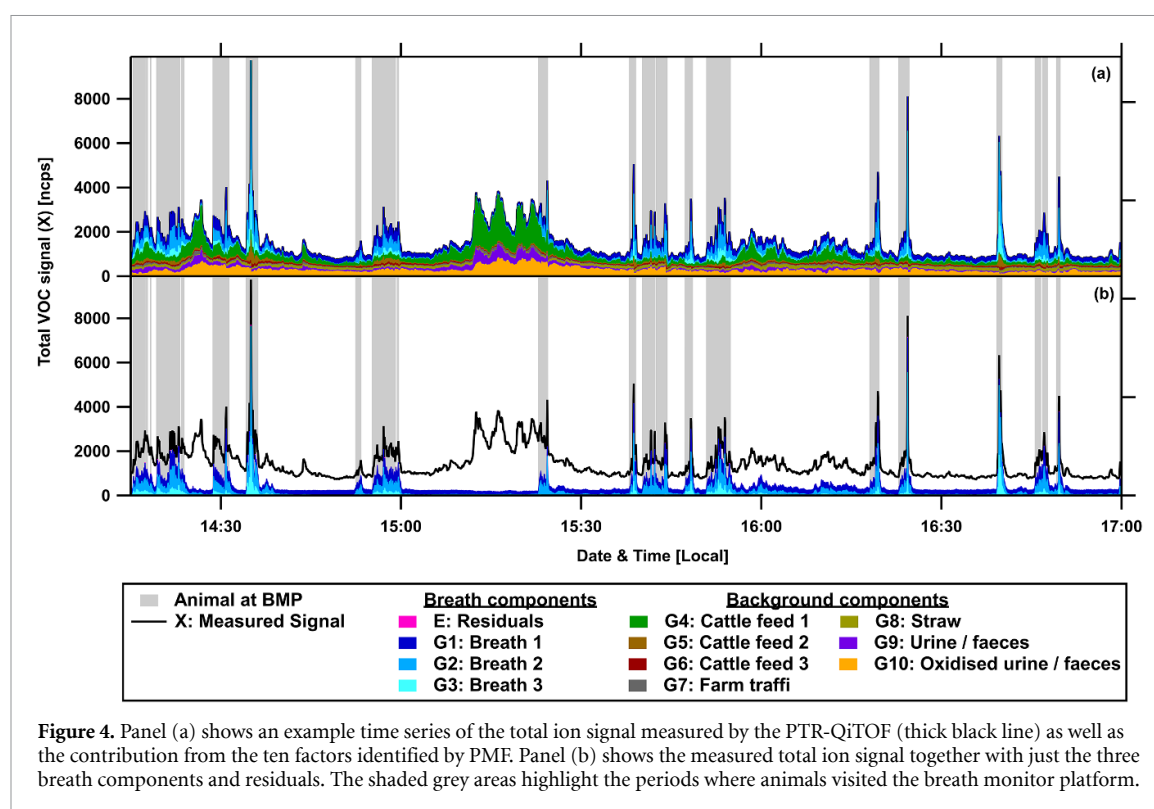
contribution of trimethylamine (TMA,  $(\text{C}_3\text{H}_9\text{N})\text{H}^+$ ) in factor F9. TMA is formed when the urea and TMA N-oxide contained in urine are enzymatically processed to TMA and  $\text{NH}_3$  by the microbes found in faeces [28]. The time series of these two factors appear somewhat anti-correlated, which can be indicative of a single factor that has split. However, these two factors appear very robust, appearing early in the solution (from six factors onwards), so factor splitting is thought unlikely in this case. Figure S6 shows that factor 10 has significantly more  $\text{NH}_3$ , whereas factor 9 has more TMA. Our hypothesis is that factor F9 is associated with urine/faeces which generate emissions of TMA, particularly during the daytime when there is a fresh supply of faeces and urine and factor F10 represents a somewhat aged or oxidised version of the urine/faeces factor (Factor F10 O:C = 0.96; Factor F9 O:C = 0.78). TMA has a short atmospheric lifetime with respect to the primary atmospheric oxidant OH (7–10 h), but is even more rapidly removed from the atmosphere due to condensation onto particles. Sintermann *et al* calculated the typical condensation sink for TMA within a cattle shed environment to be on the order of 30–1000 s [28]. In contrast, the lifetime of  $\text{NH}_3$  is slightly longer (hours to days with respect to OH) which may account for the distinct differences in the diurnal patterns of these two factors. Furthermore,  $\text{NH}_3$  has other strong local sources, with emissions carried on the breath and from the skin/fur of the cattle as well as from traffic and the straw bedding material.

Finally, factor F8 was attributed to emission from the straw bedding used inside the cattle shed. Laboratory measurements of the bedding show it to have characteristic peaks of ethenone,  $\text{CO}_2$  and acetic acid as well as contributions from  $\text{NH}_3$  and the monoterpene fragment  $(\text{C}_6\text{H}_8)\text{H}^+$ . Factor F8 has a similar mass spectral profile to that of the straw sample tested and its time series showed a gradual decrease over time which is consistent with a decrease in source strength, as might be expected from straw.

Figure 4(a) shows the total ion signal measured by the PTR-QiTOF together with the stacked contributions from individual factors identified using PMF. Figure 4(b) shows the same time series but with the non-breath components removed plus the residuals. The remaining peaks, clearly coincide with periods where an animal accessed the water trough (highlighted in grey). The contribution of the breath factors is not zero between visits for two reasons. Firstly, exhaled breath makes up a portion of the background air within the cattle shed and secondly, PMF has a non-negative constraint so the average of a factor can never be exactly zero.

After removing the non-breath components, the remaining data underwent the same analysis as the raw data described in section 3.1, with a low frequency baseline first removed using a running minimum and subsequent subtraction of an





**Figure 4.** Panel (a) shows an example time series of the total ion signal measured by the PTR-QiTOF (thick black line) as well as the contribution from the ten factors identified by PMF. Panel (b) shows the measured total ion signal together with just the three breath components and residuals. The shaded grey areas highlight the periods where animals visited the breath monitor platform.

interpolated background. Figure 5 shows a linear interpolation between the periods before and after the animal has entered the BMP is now more successful having first removed the non-breath components identified using PMF analysis. In contrast to figure 2, there are no negative contributions during the interpolated periods (shaded areas).

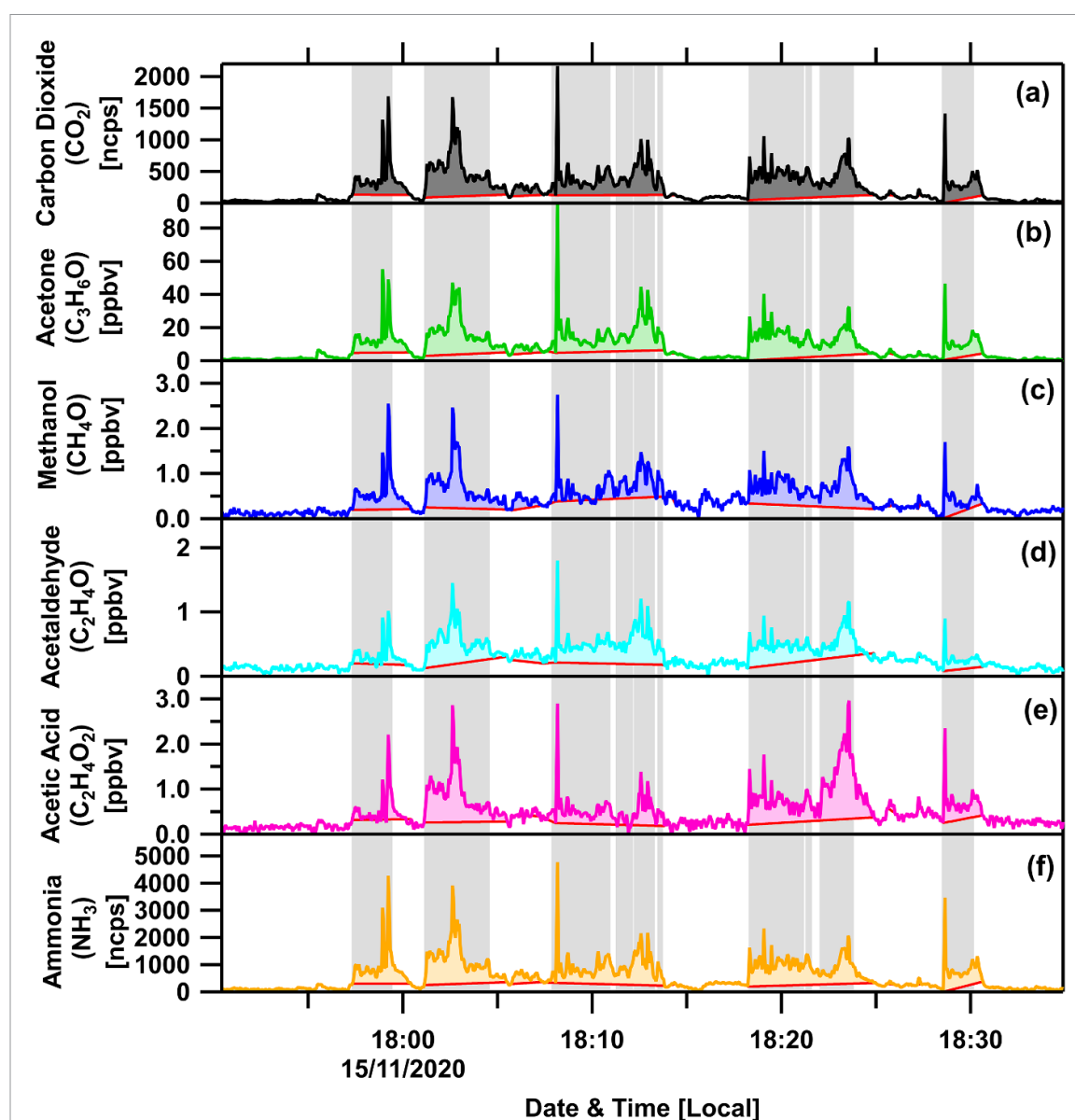
### 3.3. Variability of breath samples

Processed BMP measurements were combined with the ear tag data recorded by the TruTest system to give the average composition of passive air samples acquired for each animal over the 2.5 day measurement period. Figure 6 compares the concentrations of CO<sub>2</sub>, methanol, acetone, acetaldehyde, acetic acid and ammonia between animals when the data is processed using the standard analysis, where each compound has had (a) a running minimum baseline removed and (b) the subtraction of a linear interpolated background. In addition, the contribution from the ten individual factors to the measured total are included together with both positive and negative residuals. Here, positive residuals represent the short-fall between the sum of the factors (GF) and the measured concentration (X) and negative residuals represent periods where the PMF solution is greater than the measured concentration.

Combining the standard analysis with the output from the PMF analysis allows any variation between passive breath samples to be attributed to either a genuine difference in breath composition or the result of contributions from local sources that could not be

entirely removed using the standard analysis. Adopting the PMF approach allows for the removal of the non-breath components and, as can be seen in figure 6, focusing on the breath components only (e.g. Breath 1 + Breath 2 + Breath 3 + residuals (both positive and negative)) removes much of the within-herd sample variability, which, for several of the ions shown, was strongly influenced by background odours. Section S4 of the supplementary information gives a more detailed summary of the average concentrations of ammonia, methanol, acetaldehyde, acetone and acetic acid for each of the 26 animals based on (a) the standard analysis and (b) an analysis where the non-breath components are first identified and removed before applying the standard background removal steps.

The magnitude of the breath sample is in part related to how long each animal spends within the BMP, the exact head location relative to the sample inlet and the dispersion/dilution of the exhaled breath during the visit. These effects were accounted for by normalising by the total CO<sub>2</sub> concentration. For CO<sub>2</sub> and acetone, which were the two largest components of breath, the fractional contribution of different factors to the measured total is almost entirely made up from the three breath factors. CO<sub>2</sub> is dominated by factor 3 (endogenous breath) and acetone is mostly attributable to factor 1 (exogenous breath), with both having small contributions from factor 2 (rumen). In contrast, methanol, acetaldehyde, acetic acid and ammonia have much larger contributions from non-breath sources, and it is these contributions that account for the majority of the variation in total



**Figure 5.** Example time series of  $\text{CO}_2$  (a), acetone (b), methanol (c), acetaldehyde (d), acetic acid (e) and ammonia (f) concentrations after a running minima background has been subtracted and the contribution from non-breath sources have been identified and removed by PMF. The solid red line represents an interpolated background between the period before and after the cow enters the BMP. The presence of the cow was determined on the basis of a  $\text{CO}_2$  concentration  $>135$  ncps. The coloured shaded areas represent the portion of the signal that would be attributed to the animal within the BMP and the grey shaded areas indicate the periods where an animal visited the breath monitor platform.

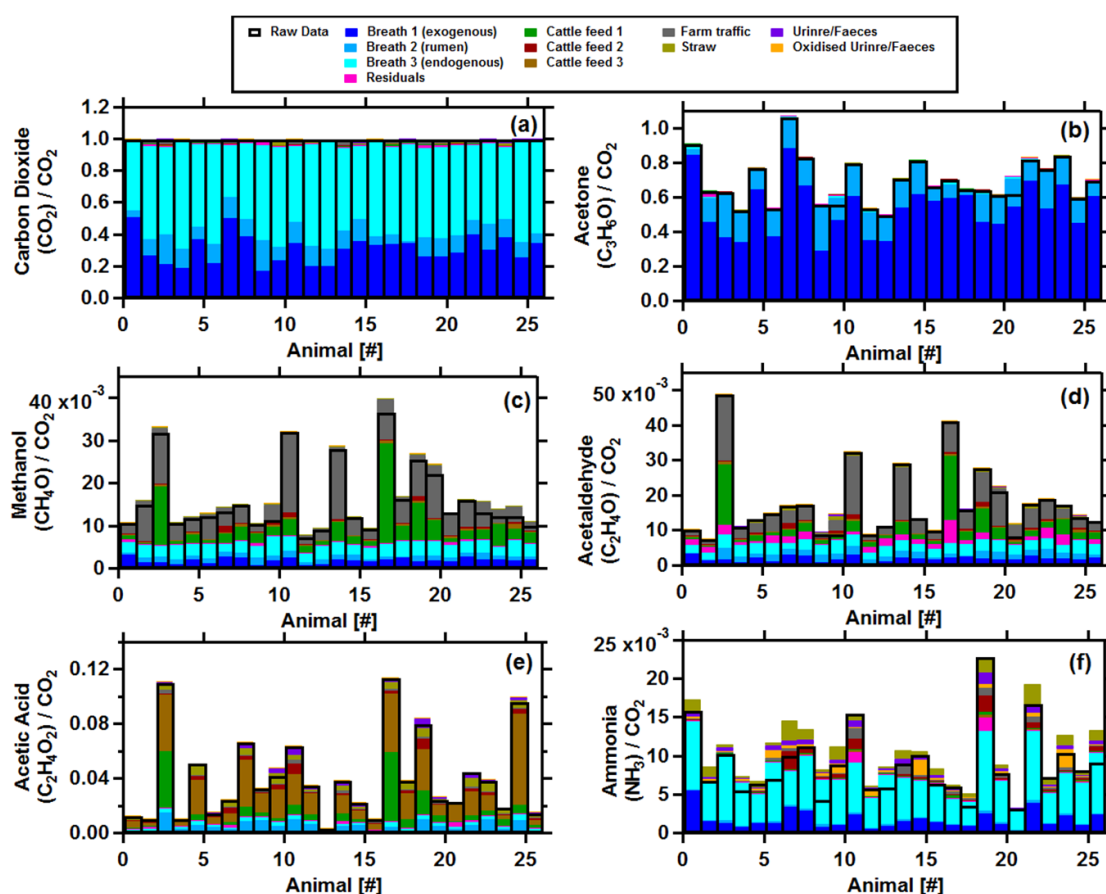
concentrations between cattle. This is a stark demonstration of the importance of using a factor analysis like PMF to identify and remove the non-breath components that can remain even after careful subtraction of the cattle shed background.

## 4. Discussion

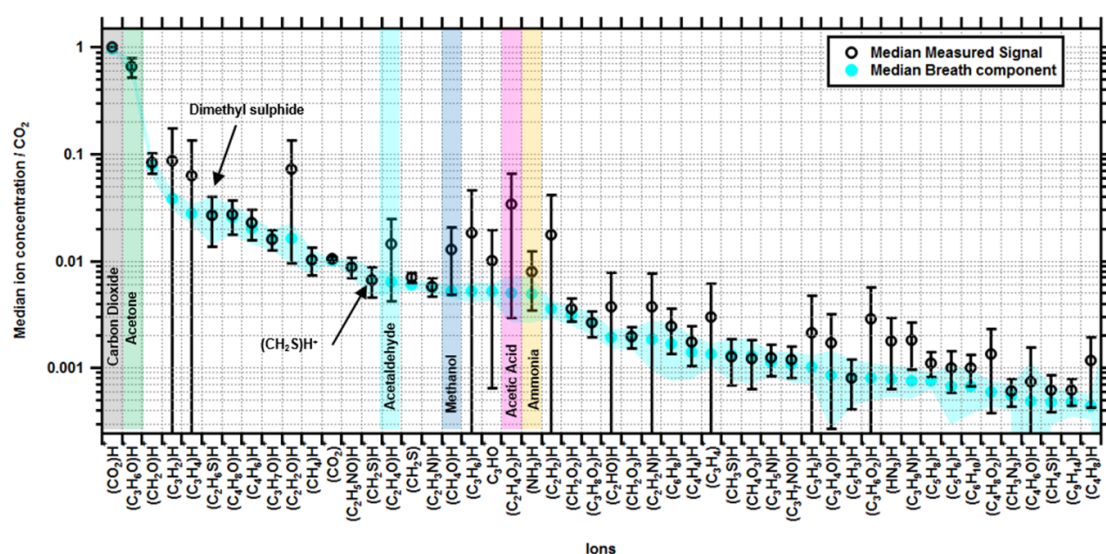
### 4.1. Deconvolution of the cattle shed background

In order to identify changes in the health status of an animal, a robust measurement system is required to ensure observed variations in breath samples reflect metabolic processes rather than changes in environmental conditions. Figure 6 has demonstrated that the passive collection of breath from within the BMP cannot make this distinction for all compounds,

and is particularly ineffective for compounds with a large background concentration that shows short term (minutes) variation. Figure 7 gives a broader assessment, ranking the 50 most abundant ions detected in the breath of the cohort of cattle. Divergence between the breath components, identified by PMF, (closed blue circles) and the total measured signal (open black circles) give an indication of how much of the non-breath components remain following basic steps of background removal (e.g. running minimum baseline and interpolated background subtraction). Averaged over the cohort of 26 cattle, the contribution of background sources to the breath measurement can be up to a factor of two and many times larger for individual visits to the BMP.



**Figure 6.** Stacked bars comparing the average concentrations of CO<sub>2</sub>, acetone (b), methanol (c), acetaldehyde (d), acetic acid (e) and ammonia (f) measured from within the BMP for the 26 individual animals. Each total has had a running minima baseline and interpolated background subtracted before being normalised by CO<sub>2</sub>. The relative contribution from the 10 factors identified by PMF is shown as stacked bars, with the breath component highlighted in shades of blue. The pink bars represent the positive residuals which are the portion of the measured VOC that could not be explained by the PMF algorithm. The negative residuals, where the PMF solutions is greater than the measured raw data, can be seen where the coloured bars exceed the solid black bars (raw data). VOC and CO<sub>2</sub> concentrations were in ncps and therefore ratios are arbitrary.



**Figure 7.** The median normalised breath concentration of the 50 most abundant ions identified in the breath of the 26 cattle ( $\pm 1\sigma$ ). Blue circles represent the fraction of the measured signal that was attributed to components of the breath by PMF analysis and black circles represent the median measured signal following the removal of a running minima baseline and interpolated background. Note the logarithmic scale. VOC and CO<sub>2</sub> concentrations were in ncps and therefore the ratios can be considered arbitrary.

This clearly demonstrates that breath samples collected passively must be carefully processed to tease apart the non-breath components that typically dominate the cattle shed air space. Failure to do so could mean the differences in observed concentrations between visits may reflect the changing environmental conditions rather than true variation in breath composition. The examples shown deliberately focus on compounds where background interferences are large, but figure 7 demonstrates that for many of the breath compounds detected using the BMP, background interferences are negligible following basic processing of the data (e.g. removal of baseline and linear interpolated background). For example, dimethyl sulphide,  $(\text{C}_2\text{H}_6\text{S})\text{H}^+$ , a compound primarily emitted from the rumen and with very few other sources within the cattle shed, shows no difference between the breath component and measured total. With this in mind, the requirement of PMF analysis to deconvolve the passive breath measurements is dependent on the markers of disease and whether they are unique to breath or emitted from other sources in the local environment.

#### 4.2. Potential for disease detection

Having established the suitability of PMF to remove background interferences from breath measurements collected using the BMP, we now explore whether this approach allows for variation in cattle breath composition, as might be associated with respiratory illness, to be reliably detected. In this pilot study, all animals were in a healthy condition and free from respiratory disease, hence none of the identified factors was directly associated with a particular individual or subset of the cattle. We therefore, chose three of the 26 cattle at random (#4, #8 and #25) and altered the mass spectral profile associated with their breath by upregulating methanol, acetaldehyde and acetic acid, three of the example compounds shown in figures 2, 5 and 6. In practice this involved four steps: (a) isolating breath factor 3 (endogenous breath), (b) removing the baseline from this factor (running minima and linear interpolation of the background) (c) multiplying the marker compounds (methanol, acetaldehyde and acetic acid) by a given scaling factor for the periods where cows #4, #8 and #25 visited the BMP and (d) adding this modified time series to the raw data prior to analysis by PMF.

Previous studies have found statistical differences in the concentrations of breath compounds between healthy animals and those infected with *M. bovis*. For example, Elis *et al* [29], identified 14 marker compounds, with the majority showing an upregulation ranging between 10% for 1,1-dimethyl-2-(1-methylethyl) cyclopropane and a factor of 18 for 1,1-diethoxyethane. The downregulated compounds showed a more modest change ranging between -4% for 2-ethyl-1-hexanol and -43% for 3-heptanone. Overall, upregulated compounds increased by an

average factor of 3.9 and downregulated compounds by a factor of 0.78. Using these results as a guide, we upregulated methanol, acetaldehyde and acetic acid each by a factor of 3.9. The modified data were then re-analysed using PMF and the results are compared with the unmodified data in figure 8. The PMF analysis was very consistent with the unmodified version, with a ten factor solution still found to be the optimum solution. Rather than a marked increase in the modified breath factor 3, the additional 'diseased' signal can be clearly seen within the residuals of the three compounds. Yet, the solution is not perfect. The residuals do not increase by an amount consistent with a factor of 3.9 increase in breath factor 3, in part because PMF works by trying to minimize the residuals. Instead, some of the additional signal appears to increase the magnitude of the traffic factor. This result highlights the limitations of the PMF approach by demonstrating that the attribution of mass to specific factors represents one of many possible solutions and, therefore, this approach is perhaps less suitable when absolute values of breath composition are required.

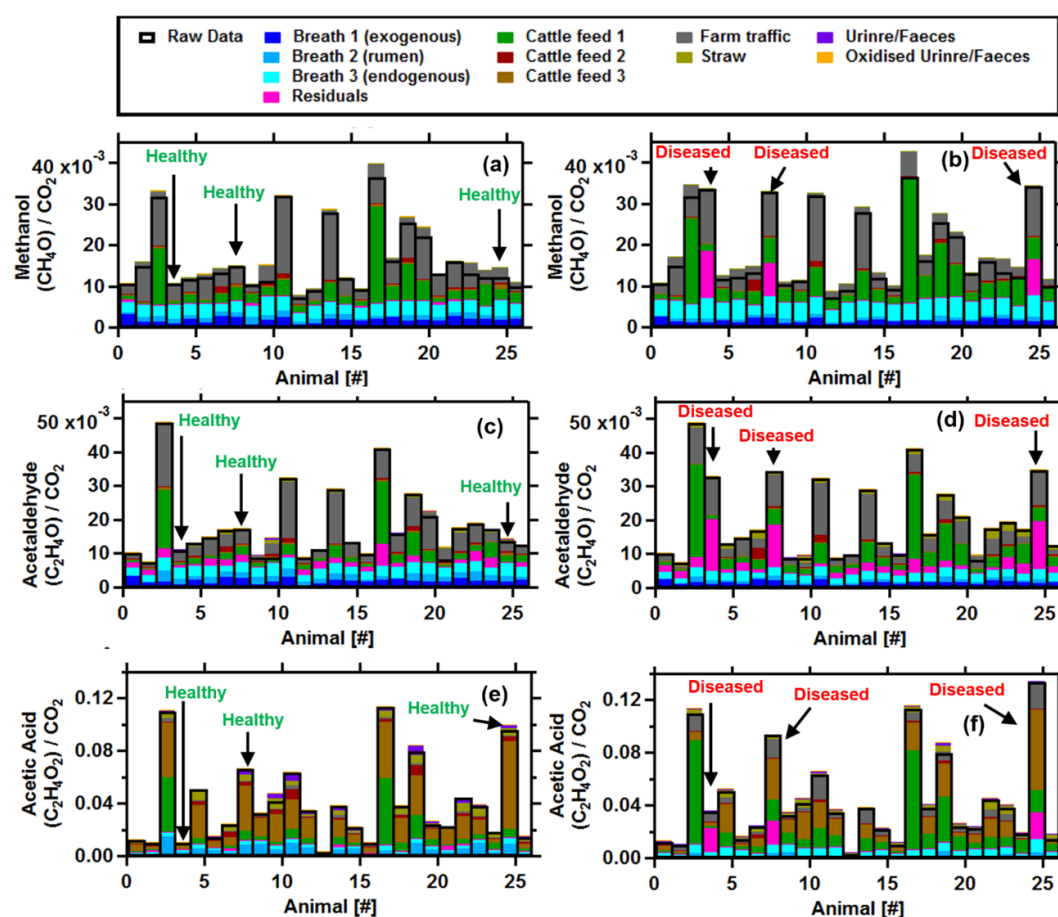
This simple exercise has highlighted the importance of including the residuals together with any identified breath components from the PMF analysis. This is because a single breath factor taken in isolation represents the average composition of the herd and therefore, does not capture individual variations which might be indicative of disease. Divergences from the 'average breath' are instead captured in the residuals, the portion of the measured data that cannot be described by any one factor. Therefore, it is only the combination of the identified breath factor(s) with the residuals that allows for variation between individual breath measurements to be captured. For those individual variations to be captured as a specific factor, the PMF solution would need to increase the number of additional factors included within the solution. This concept is explored further below.

#### 4.3. Potential for PMF to directly detect diseased animals

Despite the addition of a simulated respiratory illness, the PMF analysis did not yield a specific factor that could be associated with the visits of the three animals with simulated disease to the BMP, even when extending the solution to a maximum of 20 factors. This is potentially because the endogenous breath component of the three compounds chosen was relatively minor compared to the cattle shed background, therefore, a  $\sim 4\times$  increase in the breath component is actually very small relative to the total measured signal.

A second PMF analysis was performed with the addition of a fourth marker compound. The additional ion,  $(\text{CH}_2\text{S})\text{H}^+$ , was chosen because, although less abundant than the other markers, endogenous breath represented a much larger fraction of its total compared to that of the other markers and  $(\text{CH}_2\text{S})\text{H}^+$



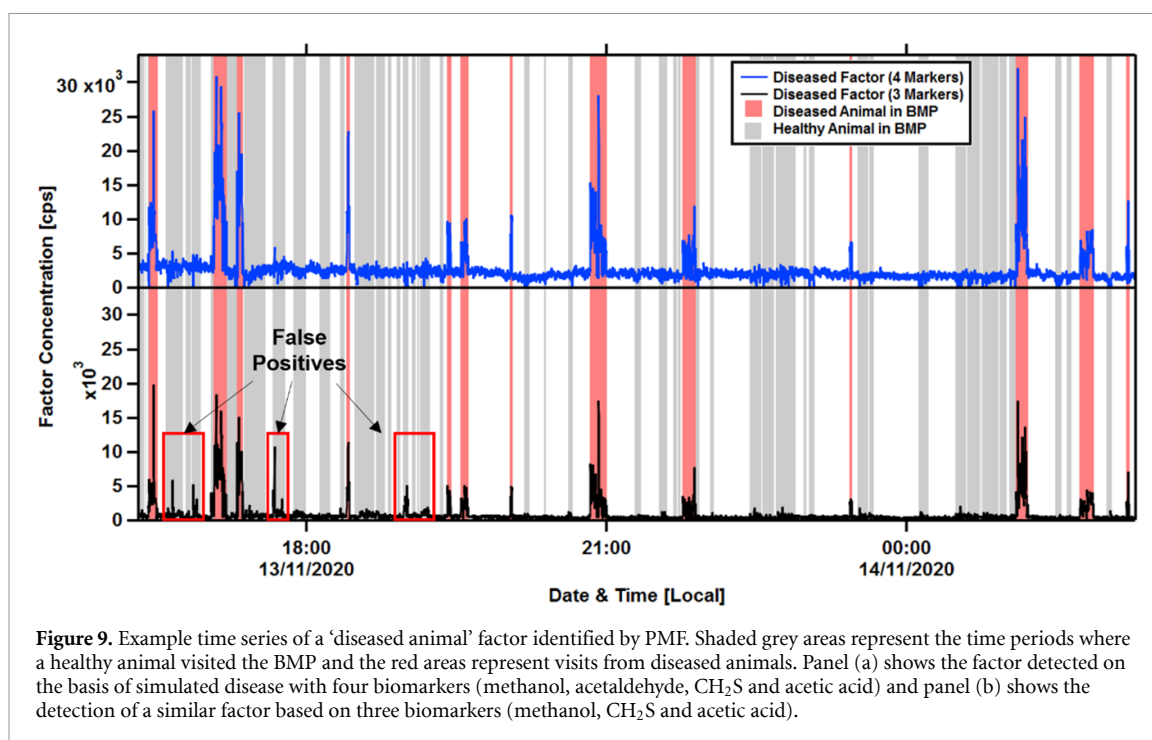


**Figure 8.** Stacked bars comparing the median concentrations of methanol (a), acetaldehyde (c) and acetic acid (e) measured from within the BMP for the 26 individual animals. Each total has had a running minima baseline and interpolated background subtracted before being normalised by  $\text{CO}_2$ . The relative contribution from the 10 factors identified by PMF is shown as stacked bars, with the breath component highlighted in shades of blue. The pink bars represent the positive residuals which are the portion of the measured VOC that could not be explained by the PMF algorithm. The negative residuals, where the PMF solution is greater than the measured raw data, can be seen where the coloured bars exceed the solid black bars (raw data). Panels b, d and f show the same result for methanol, acetaldehyde and acetic acid, respectively, where animals #4, #8 and #25 were modified to simulate disease. For these cattle, breath factor 3 was increased by a factor of 3.9 before re-running the PMF algorithm. VOC and  $\text{CO}_2$  concentrations were in ncps and therefore ratios are arbitrary.

was almost exclusively emitted on the breath of cattle (see figures 7 and S14 on the SI). Figure 9(a) shows the time series of a factor identified by PMF where concentrations clearly increase during visits from each of the diseased animals (shaded red area) but not in the case of the healthy animals (shaded grey area). This factor was only identified once the solution was increased to 16 factors. The mass spectral profile of this factor is shown in figure S15. Rather than being dominated by contributions from the four marker compounds, the three most abundant ions were ammonia,  $\text{CO}_2$ , and  $(\text{C}_2\text{H}_2\text{O})\text{H}^+$  (ketone or ethenone). Acetic acid, methanol, acetaldehyde and  $(\text{CH}_2\text{S})\text{H}^+$  were the next most abundant ions, respectively. This discrepancy between the modified ions and those found in the diseased factor profile again highlights that while the PMF analysis was able to produce a solution that could identify the periods when a ‘diseased cow’ visited the BMP, it was unable to perfectly replicate the exact suite of ions that were modified.

An additional PMF analysis was conducted using three marker compounds, this time replacing acetaldehyde with  $(\text{CH}_2\text{S})\text{H}^+$ . With this combination, the PMF analysis detected a very similar ‘diseased animal’ factor but the solution had to be increased to 17 factors before it appeared. With slightly less information to work with the solution was not as robust, with some instances of false positives, where spikes in the ‘diseased animal’ factor were present during the visits of healthy animals to the BMP. The time series is shown in figure 9(b).

Further PMF solutions were carried out iteratively to determine the lower limit of detection for the ‘diseased animal’ factor. For these compounds and this set of measurements this limit was found to be a 3.5 multiplication of the endogenous breath fraction, but this will undoubtedly vary depending on the number of markers, their magnitude and the relative contribution of the background to the measured marker total. Similarly, here we have adjusted each marker equally, whereas in reality different markers would be



**Figure 9.** Example time series of a ‘diseased animal’ factor identified by PMF. Shaded grey areas represent the time periods where a healthy animal visited the BMP and the red areas represent visits from diseased animals. Panel (a) shows the factor detected on the basis of simulated disease with four biomarkers (methanol, acetaldehyde,  $\text{CH}_2\text{S}$  and acetic acid) and panel (b) shows the detection of a similar factor based on three biomarkers (methanol,  $\text{CH}_2\text{S}$  and acetic acid).

up or down regulated with varying magnitude and may change as the disease progresses. In addition, the exact degree of up-regulation of each marker will differ between diseased animals, whereas here it was kept constant across the three diseased cattle. It is possible that in a real world example the analysis would pick out several factors reflecting the range of expressions of the disease on emissions with any combination of these factors for various animals. Future work should now look to identify markers of respiratory disease in cattle and assess whether these can be directly detected using the approach outlined here, or with other methods such as randomForests which are more suited to binary classification problems.

#### 4.4. Limitations of the BMP

The BMP allows for the automated capture of breath samples from individual cattle without the need for handling. We have shown how the collected breath samples can be carefully processed to limit the contributions of non-breath artefacts and how this approach might be used to highlight differences in breath composition from within the monitored herd. This approach is a significant advancement on previous studies that have used single point measurements to assess the general health of a herd [17] rather than individual animals, offering potential for passive breath monitoring to aid in the detection of respiratory diseases in livestock. However, this method also has limitations. For example, our analysis has shown that samples acquired from the BMP and analysed by PMF will never perfectly replicate the breath composition acquired through the use of a respiratory mask. In particular, using respiratory masks allows for a targeted analysis of a particular phase

of the exhaled breath, such as the alveolar fraction, where more specific diagnostic information may be located. Accessing such specific information is plainly not possible using the BMP. A further consideration is the fact that the application of PMF to the passively acquired data introduces a degree of subjectivity, with the number of factors chosen in the solution down to the individual processing the data. This means that while comparison between animals from within that set of measurements is possible, comparisons with other data sets and other methods, such as respiratory masks, are likely to be less meaningful.

In this study we use a PTR-QiTOF for the quantification of VOCs, but this instrument is only able to detect certain compounds, for example those with a proton affinity greater than water (when in  $\text{H}_3\text{O}^+$  ion mode). Furthermore, the instrument is limited to molecular formula identification of measured ions which means absolute identification of compounds is not possible.

We have shown that the PMF algorithm is, in principle, capable of directly detecting instances of a simulated disease in a herd of cattle, albeit under highly idealised conditions. However, its success at doing so was (at least in this simulation) related to the magnitude of the changes of the biomarkers relative to the total measured signal, which is often dominated by background odours from within the cattle shed. The sensitivity of the approach could, therefore, be improved by taking steps to reduce this background. Future efforts should see if improvements can be made by placing the BMP outside of the cattle shed where background concentrations are typically orders of magnitude lower due to the natural ventilation of the system by the wind. Where this is not

possible, the system could be continually flushed with air from outside the cattle shed or using air that has first passed through a charcoal filter to reduce the background concentrations and ensure the breath concentrations dominate the sampled air rather than other odours.

Finally, the successful separation of breath samples from the cattle shed background requires a sufficient amount of data to be collected for the PMF algorithm to work with e.g. one day of measurements. This means animals with an abnormal breath composition are unlikely to be flagged at the point of measurement, but only once the full measurement period has been analysed and reviewed.

## 5. Conclusion

Online breath analysis has become an important clinical tool for the diagnosis of numerous respiratory and metabolic illnesses in humans, but its application to livestock is relatively unexplored due to the practical difficulties of sampling from animals. We have shown how the diagnostic potential seen in humans might be extended to livestock using a passive BMP, where exhaled breath accumulates under a hood while an animal accesses the water trough. The VOCs emitted into this air space were analysed using a PTR-QiTOF, with a total of 106 ions that could be assigned a molecular formula. Passive monitoring of the breath in this way avoids the requirement for handling livestock and allows the breath composition of individuals to be tracked over time, but comes at the cost of controlled acquisition of the sample, with the breath unavoidably mixed with the complex blend of compounds present within the cattle shed. Our study highlights how the breath sample can be retrospectively separated from the cattle shed background through the application of PMF. In this study, three breath related components were identified following the removal of the background factors, thought to reflect the average endogenous breath, exogenous breath (breath after feeding) and emissions from the rumen. While the endogenous breath fraction showed no discernible pattern, the exogenous and in particular the rumen fraction exhibited a strong diurnal cycle with breath concentrations largest during the daytime. The background factors were dominated by emissions from the cattle feed, farm traffic and urine/faeces. The time series of each background factor was highly variable and, with the exception of CO<sub>2</sub> and acetone, most of the compounds were present at concentrations far higher than in breath making it impossible to isolate the breath fraction using standard background removal.

Following the removal of the cattle shed background using PMF, the three identified breath factors were summed together with the residuals to give an average breath sample for each of the 26 animals. The inclusion of the residuals was found to be vital,

because each breath factor in isolation represents the average composition of the monitored herd. Introducing an artificial disease signal to three of the healthy cattle, by upregulating several compounds found in the endogenous breath component of each of these animals, we found that the addition resulted in only a modest increase in the endogenous breath component of all cattle, with the upregulation instead captured in the residuals of the three modified cattle.

The potential for PMF to identify and remove artefacts from passive breath samples has been demonstrated in this short pilot study, but future work should now explore how the requirement for signal analysis might be reduced. This could be achieved by taking steps to lower background interferences, either by placing the BMP outside of the main cattle shed to increase natural ventilation of the platform, or by flushing the hooded area with VOC free air between visits. Reducing the background relative to the breath sample will increase the sensitivity of the approach.

Finally, our short pilot study worked with 26 cattle free from respiratory illness. Going forward, the method should focus on whether factor analysis techniques can directly identify individuals actually suffering from respiratory disease and, importantly, whether subclinical incidence of disease can be identified. A key step going forward will be to identify the potential compounds indicative of disease so the approach can become more targeted and where possible utilise low-cost electrochemical sensors. The later step will be vital if the BMP is to offer a practical solution for detecting respiratory and metabolic illnesses in cattle and other livestock.

## Data availability statement

The data that support the findings of this study are available upon reasonable request from the authors.

## Acknowledgments

We would like to thank Lesley Purcell and Claire Broadbent for management and health scoring the animals throughout the trial and Neil Mullinger for helping to setup the mobile laboratory. SRUC receives core funding from RESAS (Rural and Environment Science and Analytical Services, Scottish Government). We thank the DelhiFlux project (NE/P016502/1) for funding the PTR-QiTOF. We thank two anonymous reviewers for their helpful comments on the manuscript.

## Ethical statement

This study was reviewed by SRUC's Animal Welfare and Ethical Review Body (AWERB) as required by the UK Home Office. Approval was granted (Approval ID: CAT AE 29-2020). Animals were housed as



required under UK Home Office guidelines in respect to stocking density, feeder space allowance etc.

## ORCID iD

Ben Langford  <https://orcid.org/0000-0002-6968-5197>

## References

- [1] Wind J J, Bell R S, Bank W O and Myseros J S 2010 People, pathogens, and our planet: volume one—towards a one health approach for controlling zoonotic diseases *J. Neurosurg. Pediatr.* **6** 579–82
- [2] Currin J F W D 2009 *Recognition and Treatment of Bovine Respiratory Disease Complex* (Virginia: Virginia Cooperative Extension Publication)
- [3] Sivula N J, Ames T R, Marsh W E and Werdin R E 1996 Descriptive epidemiology of morbidity and mortality in Minnesota dairy heifer calves *Prev. Vet. Med.* **27** 155–71
- [4] Schaefer A L, Cook N J, Church J S, Basarab J, Perry B, Miller C and Tong A K W 2007 The use of infrared thermography as an early indicator of bovine respiratory disease complex in calves *Res. Vet. Sci.* **83** 376–84
- [5] Nickell J S and White B J 2010 Metaphylactic antimicrobial therapy for bovine respiratory disease in stocker and feedlot cattle *Vet. Clin. Food Anim. Pract.* **26** 285–301
- [6] Hateley G 2018 *Mycoplasma Bovis: Current Knowledge, Industry Challenges and Gaps for the UK Cattle Industry* (Maryland, US: SRUC, Animal & Plant Health Agency) pp 1–5
- [7] Glover I D 2017 Improving calf-side diagnosis of respiratory disease on UK dairy farms *Livestock* **22** 230–8
- [8] Timsit E, Assié S, Quiniou R, Seegers H and Bareille N 2011 Early detection of bovine respiratory disease in young bulls using reticulo-rumen temperature boluses *Vet. J.* **190** 136–42
- [9] Rose-Dye T K, Burciaga-Robles L O, Krehbiel C R, Step D L, Fulton R W, Confer A W and Richards C J 2011 Rumen temperature change monitored with remote rumen temperature boluses after challenges with bovine viral diarrhoea virus and Mannheimia haemolytica *J. Anim. Sci.* **89** 1193–200
- [10] Mahendran S A, Booth R, Burge M and Bell N J 2017 Randomised positive control trial of NSAID and antimicrobial treatment for calf fever caused by pneumonia *Vet. Rec.* **181** 45
- [11] Duthie C-A, Bowen J M, Bell D J, Miller G A, Mason C and Haskell M J 2021 Feeding behaviour and activity as early indicators of disease in pre-weaned dairy calves *Anim. Int. J. Anim. Biosci.* **15** 100150
- [12] Peled N, Ionescu R, Nol P, Barash O, McCollum M, VerCauteren K, Koslow M, Stahl R, Rhyan J and Haick H 2012 Detection of volatile organic compounds in cattle naturally infected with Mycobacterium bovis *Sens. Actuators B* **171–172** 588–94
- [13] Ophelders D et al 2021 Screening of chorioamnionitis using volatile organic compound detection in exhaled breath: a pre-clinical proof of concept study *Front. Pediatr.* **9** 617906
- [14] Traxler S et al 2018 VOC breath profile in spontaneously breathing awake swine during Influenza A infection *Sci. Rep.* **8** 14857
- [15] Purkhart R, Köhler H, Liebler-Tenorio E, Meyer M, Becher G, Kikowatz A and Reinhold P 2011 Chronic intestinal Mycobacteria infection: discrimination via VOC analysis in exhaled breath and headspace of feces using differential ion mobility spectrometry *J. Breath Res.* **5** 027103
- [16] Maurer D L, Koziel J A, Engelken T J, Cooper V L and Funk J L 2018 Detection of volatile compounds emitted from nasal secretions and serum: towards non-invasive identification of diseased cattle biomarkers *Separations* **5** 18
- [17] Gierschner P, Küntzel A, Reinhold P, Köhler H, Schubert J K and Miekisch W 2019 Crowd monitoring in dairy cattle—real-time VOC profiling by direct mass spectrometry *J. Breath Res.* **13** 046006
- [18] Jordan A, Haidacher S, Hanel G, Hartungen E, Märk L, Seehauser H, Schottkowsky R, Sulzer P and Märk T D 2009 A high resolution and high sensitivity proton-transfer-reaction time-of-flight mass spectrometer (PTR-TOF-MS) *Int. J. Mass Spectrom.* **286** 122–8
- [19] Inomata S, Tanimoto H, Kameyama S, Tsunogai U, Irie H, Kanaya Y and Wang Z 2008 Technical note: determination of formaldehyde mixing ratios in air with PTR-MS: laboratory experiments and field measurements *Atmos. Chem. Phys.* **8** 273–84
- [20] Smolinska A, Hauschild A-C, Fijten R R R, Dallinga J W, Baumbach J and van Schooten F J 2014 Current breathomics—a review on data pre-processing techniques and machine learning in metabolomics breath analysis *J. Breath Res.* **8** 027105
- [21] Warneke C, De Gouw J A, Kuster W C, Goldan P D and Fall R 2003 Validation of atmospheric VOC measurements by proton-transfer-reaction mass spectrometry using a gas-chromatographic pre-separation method *Environ. Sci. Technol.* **37** 2494–501
- [22] Paatero P and Tapper U 1994 Positive matrix factorization: a non-negative factor model with optimal utilization of error estimates of data values *Environmetrics* **5** 111–26
- [23] Allan J D et al 2003 Quantitative sampling using an aerodyne aerosol mass spectrometer—1. Techniques of data interpretation and error analysis *J. Geophys. Res. Atmos.* **108** D3
- [24] Ulbrich I M, Canagaratna M R, Zhang Q, Worsnop D R and Jimenez J L 2009 Interpretation of organic components from positive matrix factorization of aerosol mass spectrometric data *Atmos. Chem. Phys.* **9** 2891–918
- [25] Oertel P, Küntzel A, Reinhold P, Köhler H, Schubert J K, Kolb J and Miekisch W 2018 Continuous real-time breath analysis in ruminants: effect of eructation on exhaled VOC profiles *J. Breath Res.* **12** 036014
- [26] Erickson M H, Gueneron M and Jobson B T 2014 Measuring long chain alkanes in diesel engine exhaust by thermal desorption PTR-MS *Atmos. Meas. Tech.* **7** 225–39
- [27] Jobson B T, Alexander M L, Maupin G D and Muntean G G 2005 On-line analysis of organic compounds in diesel exhaust using a proton transfer reaction mass spectrometer (PTR-MS) *Int. J. Mass Spectrom.* **245** 78–89
- [28] Sintermann J, Schallhart S, Kajos M, Jocher M, Bracher A, Mürger A, Johnson D, Neftel A and Ruuskanen T 2014 Trimethylamine emissions in animal husbandry *Biogeosciences* **11** 5073–85
- [29] Ellis C K, Stahl R S, Nol P, Waters W R, Palmer M V, Rhyan J C, VerCauteren K C, McCollum M and Salman M D 2014 A pilot study exploring the use of breath analysis to differentiate healthy cattle from cattle experimentally infected with mycobacterium bovis *PLoS One* **9** e89280