



# Cyanobacterial endobionts within a major marine planktonic calcifier (*Globigerina bulloides*, Foraminifera) revealed by 16S rRNA metabarcoding

Clare Bird<sup>1</sup>, Kate F. Darling<sup>1,2</sup>, Ann D. Russell<sup>3</sup>, Catherine V. Davis<sup>3</sup>, Jennifer Fehrenbacher<sup>3,4</sup>, Andrew Free<sup>5</sup>, Michael Wyman<sup>6</sup>, and Bryne T. Ngwenya<sup>1</sup>

<sup>1</sup>School of Geosciences, University of Edinburgh, Grant Institute, The King's Buildings, James Hutton Road, Edinburgh, EH9 3FE, UK

<sup>2</sup>School of Geography and Geosciences, University of St Andrews, North Street, St Andrews, KY16 9AL, UK

<sup>3</sup>Earth and Planetary Sciences, University of California Davis, 2119 Earth and Physical Sciences, One Shields Avenue, Davis, CA 95616, USA

<sup>4</sup>College of Earth, Ocean, and Atmospheric Sciences, Oregon State University, Corvallis, OR 97331, USA

<sup>5</sup>School of Biological Sciences, University of Edinburgh, Roger Land Building, The King's Buildings, Alexander Crum Brown Road, Edinburgh, EH9 3FF, UK

<sup>6</sup>Biological and Environmental Sciences, Faculty of Natural Sciences, Cottrell Building, University of Stirling, Stirling, FK9 4LA, UK

Correspondence to: Clare Bird (clare.bird@ed.ac.uk)

Received: 23 September 2016 – Discussion started: 16 November 2016

Revised: 26 January 2017 – Accepted: 8 February 2017 – Published: 28 February 2017

**Abstract.** We investigated the possibility of bacterial symbiosis in *Globigerina bulloides*, a palaeoceanographically important, planktonic foraminifer. This marine protist is commonly used in micropalaeontological investigations of climatically sensitive subpolar and temperate water masses as well as wind-driven upwelling regions of the world's oceans. *G. bulloides* is unusual because it lacks the protist algal symbionts that are often found in other spinose species. In addition, it has a large offset in its stable carbon and oxygen isotopic compositions compared to other planktonic foraminifer species, and also that predicted from seawater equilibrium. This is suggestive of novel differences in ecology and life history of *G. bulloides*, making it a good candidate for investigating the potential for bacterial symbiosis as a contributory factor influencing shell calcification. Such information is essential to evaluate fully the potential response of *G. bulloides* to ocean acidification and climate change. To investigate possible ecological interactions between *G. bulloides* and marine bacteria, 18S rRNA gene sequencing, fluorescence microscopy, 16S rRNA gene metabarcoding and transmission electron microscopy (TEM) were performed

on individual specimens of *G. bulloides* (type IId) collected from two locations in the California Current. Intracellular DNA extracted from five *G. bulloides* specimens was subjected to 16S rRNA gene metabarcoding and, remarkably, 37–87 % of all 16S rRNA gene sequences recovered were assigned to operational taxonomic units (OTUs) from the picocyanobacterium *Synechococcus*. This finding was supported by TEM observations of intact *Synechococcus* cells in both the cytoplasm and vacuoles of *G. bulloides*. Their concentrations were up to 4 orders of magnitude greater inside the foraminifera than those reported for the California Current water column and approximately 5 % of the intracellular *Synechococcus* cells observed were undergoing cell division. This suggests that *Synechococcus* is an endobiont of *G. bulloides* type IId, which is the first report of a bacterial endobiont in the planktonic foraminifera. We consider the potential roles of *Synechococcus* and *G. bulloides* within the relationship and the need to determine how widespread the association is within the widely distributed *G. bulloides* morphospecies. The possible influence of *Synechococcus* respiration on *G. bulloides* shell geochemistry is also explored.

## 1 Introduction

Mutualistic associations between organisms in marine ecosystems can provide the partners involved with the capacity to adapt to environmental stresses such as energy or nutrient limitation as well as provide robustness under the challenges caused by climate change. For example, the close association between photosynthetic microalgae and planktonic foraminifera supplies valuable fixed carbon and other benefits to the host and is a common feature of oligotrophic surface waters (Decelle et al., 2015). Since Murray first proposed a symbiotic role for these intracellular phototrophs in 1897 (Murray, 1897), many cytological and ultrastructural studies using light, fluorescence, and transmission electron microscopy have confirmed the presence of intracellular photosynthetic dinoflagellates or chrysophyte algae in a wide range of planktonic foraminifera (see Gastrich, 1987; Hemleben et al., 1989). Symbiosis was demonstrated first by Bé et al. (1982) in *Orbulina universa* by the elimination of its dinoflagellate endobionts and their successful reinfection. Other experimental techniques focused on tracing radiolabelled C and N (Gastrich and Bartha, 1988), stable isotope analysis (Uhle et al., 1997, 1999), and microsensor studies of the chemical microenvironment (Jørgensen et al., 1985; Rink et al., 1998). However, direct microscopic observations remain an important first step in assessing potential symbiotic associations.

Since not all planktonic foraminifera harbour protist microalgae, there is obvious diversity in the requirement for this type of mutualistic relationship. Technological advances now allow the investigation of the potential diversity and physiological role of other organisms (e.g. bacteria) entering into relationships with these abundant, calcifying protists. Understanding and investigating the full range of their mutualistic relationships is of great importance in planktonic foraminifera because of their considerable importance in Earth's biogeochemical cycles. Their calcium carbonate shells play a significant role in marine carbon cycling within the water column and ocean sediments. They contribute up to 40 % of the biogenic carbonate exported from the surface ocean (Schiebel, 2002; Schiebel et al., 2007), and shell dissolution at depth provides a significant buffering of ocean carbonate chemistry and atmospheric CO<sub>2</sub> (Holligan and Robertson, 1996; Iglesias-Rodriguez et al., 2002; Schiebel, 2002; Feely et al., 2004; Ridgwell and Zeebe, 2005; Sarmiento and Gruber, 2006). However, calcification rates of foraminifera are now known to be affected by the continued release of anthropogenic CO<sub>2</sub>, and are sensitive to the associated changes in surface seawater pH (Ridgwell and Zeebe, 2005; Manno et al., 2012). Assessment of the impact of climate change on planktonic foraminifera and the implications for future biogenic carbonate production is hampered currently by a lack of basic ecological information (Lombard et al., 2011; Roy et al., 2015), including information on the diversity of symbiont–foraminifera associations that might

allow different species to adapt to future environmental conditions. In addition to their role in marine carbon cycling, the geochemistry of foraminiferal shells buried within the sediments provides a long-term repository of information that reveals past changes in ocean conditions. Reconstructions of past seawater temperature, pH, dissolved inorganic carbon (DIC) concentrations and other environmental parameters based on these shell geochemical proxies provide essential constraints for refining climate change projections (Kucera 2007; Katz et al., 2010; Henderson, 2002). The underlying rationale in the use of foraminiferal shell chemistry for this purpose is that it reflects conditions in bulk seawater at the time of deposition. Yet this chemical signal can be altered by protist algal symbionts within some foraminifer species, complicating the interpretation of proxy records (Spero et al., 1991; Bemis et al., 1998; 2002; Anand et al., 2003; Russell et al., 2004). Important geochemical proxies such as  $\delta^{18}\text{O}$ ,  $\delta^{13}\text{C}$ , and  $\delta^{11}\text{B}$  are influenced by the consumption or addition of CO<sub>2</sub> to the calcifying microenvironment through photosynthesis by algal symbionts and symbiont–host respiration (Mashiotta et al., 1997; Rink et al., 1998; Wolf-Gladrow et al., 1999; Hönisch et al., 2003; Eggins et al., 2004). The presence of other symbiotic or endobiotic organisms like bacteria within a foraminiferal host could also potentially complicate the interpretation of the proxy record via cryptic isotope fractionation through respiration or other metabolic processes.

Although the role and importance of the protist algal symbionts within planktonic foraminifera is widely recognised and relatively well understood, the association of planktonic foraminifera with bacteria has received very little scientific attention. Apart from a few studies reporting the presence of living bacteria inside benthic foraminifera from dysoxic sediments (Bernhard et al., 2000, 2006, 2012; Tsuchiya et al., 2015), there has been little consideration of specific endosymbioses between foraminifera and prokaryotes. Indeed, there are no reports of planktonic foraminiferal relationships with bacteria other than a single report observing the external association of *Globigerinella siphonifera* type I with the marine nitrogen-fixing, filamentous cyanobacterium *Trichodesmium* (Huber et al., 1997). This oversight is surprising, since the occurrence of bacterial symbiosis within other protists is well established, as is their great potential for providing highly specialised metabolic processes to their hosts (e.g. van Hoek et al., 2000; Schweikert and Meyer, 2001; Beier et al., 2002; Ashton et al., 2003; Foikin et al., 2003; Gast, 2009; Nowack et al., 2010; Orsi et al., 2012; Gilbert et al., 2012).

*G. bulloides* is a spinose planktonic foraminifer lacking protist algal symbionts (Febvre-Chevalier, 1971; Spero and Lea, 1996) that is abundant in the subpolar and temperate regions and also in the lower-latitude upwelling systems (Kleijne et al., 1989; Naidu and Malmgren, 1996). In these climatically sensitive areas it dominates the downward flux of foraminiferal shells to the sea floor and, as a consequence, is of considerable importance for palaeoclimate reconstruc-

tions (Sautter and Thunell, 1991; Spero and Lea, 1996). A complication in using *G. bulloides* for palaeoclimate reconstruction, however, is that despite its lack of protist algal symbionts, the shell secreted by *G. bulloides* is still out of isotopic equilibrium with respect to both carbon and oxygen isotopes, deviating from predicted values by more than any other extant, surface-dwelling species (Deuser et al., 1981; Kahn and Williams, 1981; Curry and Matthews, 1981; Kroon and Darling, 1995; Spero and Lea, 1996; Bijma et al., 1999). Such deviations are difficult to explain in the absence of protist algal symbionts, although some of the disequilibrium has been potentially linked to growth and ontogeny or even to *G. bulloides* respiration rates (Spero and Lea, 1996). The presence of intracellular bacteria may provide an additional or contributing explanation.

The study of *G. bulloides* is further complicated by our current inability to morphologically distinguish the numerous genotypes of *G. bulloides* identified within the morphospecies (Darling and Wade, 2008; Seears et al., 2012; Morard et al., 2013). The majority of the genotypes have been elevated to species level status (Andre et al., 2014) and all are potentially ecologically distinct, though they are commonly found in the same water column, where their adaptive ranges overlap (Darling and Wade, 2008; Morard et al., 2013). Where this occurs, aggregation of two ecologically distinct *G. bulloides* species could introduce significant noise into palaeoclimate calibrations (Darling et al., 2000; Kucera and Darling, 2002), particularly if they exhibit genotype-specific geochemical signatures as has recently been demonstrated in the Arabian Sea (Sadekov et al., 2016).

In this study we have focussed on the cool water lineage *G. bulloides* type IId. With the exception of a single specimen of type IIa appearing off Santa Barbara in January (Darling et al., 2003), type IId was the only genotype identified off the coast of California throughout the year in both upwelling and non-upwelling hydrographic regimes (Darling et al., 2003; Darling and Wade, 2008). This is also the region where the majority of experimental geochemical studies on the *G. bulloides* morphospecies have been carried out, which means that current calibrations for this area should be robust (e.g. Spero and Lea, 1996; Bemis et al., 1998, 2000, 2002), but may not be globally applicable since this genotype has not been found elsewhere to date (Darling and Wade, 2008; Morard et al., 2013).

We examined the intracellular bacterial population of individual specimens of the planktonic foraminifer *G. bulloides* using a multiphasic approach. We used 18S rRNA gene sequencing to identify the genotype of the host cells and fluorescence microscopy, 16S rRNA gene metabarcoding via next-generation sequencing, transmission electron microscopy (TEM), and genetic characterisation using the polymerase chain reaction (PCR) to investigate the distribution and taxonomic affiliations of the intracellular bacteria. We demonstrate that intact, viable cells of the picocyanobacterium *Synechococcus* spp. accumulate in large

numbers within the cytoplasm of *G. bulloides* type IId. We propose that these cells are likely to be taken up directly from the surrounding water column and that *Synechococcus* should be considered an endobiont of *G. bulloides* type IId. We go on to consider the nature of this association and its potential metabolic and geochemical implications. We also discuss the power of the methodological approach adopted for improving ecological knowledge of planktonic foraminifera.

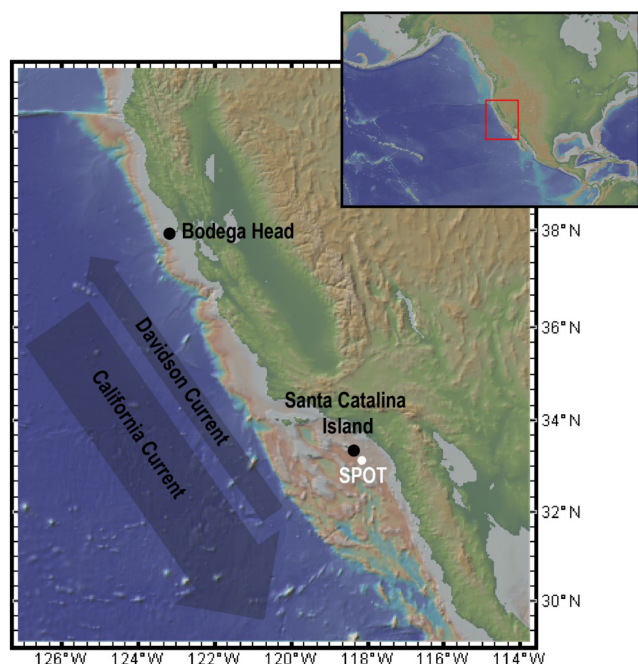
## 2 Materials and methods

### 2.1 Oceanographic setting

Sampling was undertaken off the Californian coast in waters influenced by two opposing currents. The California Current flows equatorward from the North Pacific Current ( $\sim 50^\circ$  N) to Baja California ( $\sim 15\text{--}25^\circ$  N). Southerly along-shore winds drive upwelling of cold nutrient-rich waters in early spring and summer in central California, and weaker but more sustained upwelling further toward the south. The relatively warm, saline Davidson Current and California Undercurrent flow poleward over the continental shelf. During the southern California summer, the California Current moves farther offshore, and the Davidson Current predominates near shore (Checkley and Barth, 2009). For this study, samples were collected along the narrow central California shelf  $\sim 1$  km off Bodega Head, California ( $38.3^\circ$  N,  $123.0^\circ$  W), and in the Southern California Bight off Santa Catalina Island ( $33.4^\circ$  N,  $118.4^\circ$  W; Fig. 1). At both sites, local variation in foraminiferal abundances and species composition is well understood (Thunell and Sautter, 1992; Field, 2004; Davis et al., 2016), driven by periods of upwelling, relaxation or downwelling, and/or seasonal predominance of the Davidson Current. The Santa Catalina Island site is close to the San Pedro Ocean Time-series (SPOT;  $33.55^\circ$ ,  $118.4^\circ$  W) station, where the composition of the bacterial assemblage in the water column has been monitored for over a decade (Chow et al., 2013; Cram et al., 2015).

### 2.2 Sample collection

The Bodega Head samples were collected during November 2014, when there is a relaxation in the upwelling before the winter storms, and also in April 2015 (Table 1). Normally, the southerly along-shore winds start to drive renewed upwelling in early spring (Garcia-Reyes and Largier, 2012) but the samples for this study were collected prior to the delayed upwelling season of 2015, an unusual phenomenon possibly due to the strong El Niño–Southern Oscillation (e.g. Jacox et al., 2015). Bodega Head samples were obtained from vertically integrated  $150\text{ }\mu\text{m}$  mesh-size net tows, deployed to a maximum depth of 160 m, or to 10 m above the seafloor at shallower sites. Tow material was transferred to ambient surface seawater and kept chilled during transit to shore at the Bodega Marine Laboratory, where live foraminifera were



**Figure 1.** Map of the Californian coast and, at higher magnification, the region within the red box (insert) showing the Bodega Head and Santa Catalina Island sampling locations, (black circles) and the SPOT sampling site (white circle). The hydrography of the region is described in Sect. 2.1, whilst the directions of flow of the two major coastal currents, the California Current and the Davidson Current, are indicated by the arrows.

wet picked. *G. bulloides* were then identified morphologically to the morphospecies level, rinsed in 0.6 µm filtered surface seawater and preserved in RNALater<sup>®</sup> (Ambion<sup>™</sup>). This reagent conserves cell integrity, inhibits nucleases at ambient temperatures, and dissolves the calcite shell. The Santa Catalina Island samples were collected by scuba diving or net tows during July/August 2013 towards the end of the weaker upwelling season off southern California. Collected foraminifera were treated as at the Bodega Marine Laboratory and transferred to RNALater<sup>®</sup> at the Wrigley Marine Science Center.

### 2.3 Decalcification and washing of samples

To remove the shell and shell-associated, external contaminants, each individual specimen was decalcified by exposure to RNALater<sup>®</sup> (Ambion<sup>™</sup>). The cell was then washed in filter-sterilised, salt-adjusted phosphate-buffered saline (PBS) or sterile artificial seawater, transferred to a new sterile 1.5 mL tube and washed a further three times before being transferred to DOC DNA extraction buffer (Sect. 2.4; Holzman and Pawlowski, 1996) for DNA analysis, or 4 % (*w/v*) paraformaldehyde in salt-adjusted PBS for microscopy. Preliminary experiments with the kleptoplastic foram *Elphidium* species confirmed the efficacy of this treatment. The majority

of prokaryote shell contaminants (> 80 %) were removed in the washing steps following dissolution in RNALater<sup>®</sup> (Bird et al., 2017).

### 2.4 Foram genotyping and Sanger DNA sequencing

DNA was extracted from individual foraminifer specimens using the DOC extraction method to identify the specific genotype (Holzman and Pawlowski, 1996). PCR amplification of the foraminiferal 18S rRNA gene was performed according to Seears et al. (2012). DNA sequencing was carried out using the BigDye<sup>®</sup> Terminator v3.1 Cycle Sequencing Kit and an ABI 3730 DNA sequencer (both Applied Biosystems).

### 2.5 DAPI staining and fluorescence microscopy

Foraminifer cells were stained with 4',6-diamidino-2-phenylindole (DAPI), which forms a highly fluorescent DAPI–DNA complex that allows the visualisation of bacterial cells and eukaryotic cell nuclei under fluorescence microscopy. Individual decalcified and washed foraminifera were fixed in 4 % (*w/v*) paraformaldehyde in salt-adjusted PBS for 4 h at 4 °C. Fixed cells were transferred to a polylysine-coated microscope slide and dehydrated through an ethanol series of 70, 90 and 100 % ethanol. Cells were stained in 1 µg mL<sup>-1</sup> DAPI (dilactate, Sigma-Aldrich) in PBS for 3 min and then rinsed with sterile deionised water. The stained preparations were mounted in AF1 mountant solution (Citifluor) and bacteria and eukaryotic nuclei visualised using a Zeiss Axio Imager Fluorescence microscope equipped with a DAPI filter set.

An unstained specimen of *G. bulloides* was also examined by fluorescence microscopy to observe the background levels of autofluorescence under the DAPI filter set to compare with the appearance of DAPI stained individuals. A TRITC filter set (excitation wavelength 540 nm, emission wavelength 580 nm) was used also on unstained individuals to investigate for the presence of autofluorescent, phycoerythrin-containing cyanobacterial cells.

### 2.6 DNA extraction, amplification and 16S rRNA gene metabarcoding

DNA for 16S rRNA gene metabarcoding of the bacterial population within the foraminifera was extracted from decalcified and washed planktonic foraminiferal cells by the DOC extraction method (Holzman and Pawlowski, 1996). The DNA from the six samples – three independent *G. bulloides* isolates (BUL34, BUL36, BUL37) and a single non-spinose *Neogloboquadrina dutertrei* (DUT55) collected in July/August off Santa Catalina Island and two additional *G. bulloides* cells collected in November off Bodega Head (BUL22, BUL23; Table 1) – was amplified alongside three reagent controls containing (i) no DNA template (two replicates) and (ii) DOC buffer only. The V4 region of the

**Table 1.** Sampling information and details of analyses performed for each planktonic foraminifer specimen collected.

Morphospecies	Sample ID	Sampling site	Sampling date	Co-ordinates	Sea surface temperature	Analysis
<i>G. bulloides</i>	BUL21	Santa Catalina Island	Jul/Aug 2013	33.4° N, 118.4° W	18–21.5 °C	Control for fluorescence microscopy
<i>G. bulloides</i>	BUL24	Santa Catalina Island	Jul/Aug 2013	33.4° N, 118.4° W	18–21.5 °C	DAPI staining and fluorescence microscopy
<i>G. bulloides</i>	BUL25	Santa Catalina Island	Jul/Aug 2013	33.4° N, 118.4° W	18–21.5 °C	DAPI staining and fluorescence microscopy
<i>G. bulloides</i>	BUL26	Santa Catalina Island	Jul/Aug 2013	33.4° N, 118.4° W	18–21.5 °C	DAPI staining and fluorescence microscopy
<i>G. bulloides</i>	BUL28	Santa Catalina Island	Jul/Aug 2013	33.4° N, 118.4° W	18–21.5 °C	DAPI staining and fluorescence microscopy
<i>G. bulloides</i>	BUL29	Santa Catalina Island	Jul/Aug 2013	33.4° N, 118.4° W	18–21.5 °C	DAPI staining and fluorescence microscopy
<i>G. bulloides</i>	BUL30	Santa Catalina Island	Jul/Aug 2013	33.4° N, 118.4° W	18–21.5 °C	DAPI staining and fluorescence microscopy
<i>G. bulloides</i>	BUL32	Santa Catalina Island	July/Aug 2013	33.4° N, 118.4° W	18–21.5 °C	TEM
<i>G. bulloides</i>	BUL34	Santa Catalina Island	Jul/Aug 2013	33.4° N, 118.4° W	18–21.5 °C	Metabarcoding, genotyping and <i>Synechococcus</i> 16S and <i>rbcL</i> cloning and sequencing
<i>G. bulloides</i>	BUL36	Santa Catalina Island	Jul/Aug 2013	33.4° N, 118.4° W	18–21.5 °C	Metabarcoding
<i>G. bulloides</i>	BUL37	Santa Catalina Island	Jul/Aug 2013	33.4° N, 118.4° W	18–21.5 °C	Metabarcoding
<i>G. bulloides</i>	BUL39	Santa Catalina Island	Jul/Aug 2013	33.4° N, 118.4° W	18–21.5 °C	TEM
<i>G. bulloides</i>	BUL69	Santa Catalina Island	Jul/Aug 2013	33.4° N, 118.4° W	18–21.5 °C	TEM
<i>N. dutertrei</i>	DUT55	Santa Catalina Island	Jul/Aug 2013	33.4° N, 118.4° W	18–21.5 °C	Metabarcoding and genotyping
<i>G. bulloides</i>	BUL04	Bodega Head	Nov 2014	38.3° N, 123.0° W	14–15 °C	<i>Synechococcus</i> 16S and <i>rbcL</i> *
<i>G. bulloides</i>	BUL05	Bodega Head	Nov 2014	38.3° N, 123.0° W	14–15 °C	<i>Synechococcus</i> 16S and <i>rbcL</i> *
<i>G. bulloides</i>	BUL13	Bodega Head	Nov 2014	38.3° N, 123.0° W	14–15 °C	<i>Synechococcus</i> 16S and <i>rbcL</i> *
<i>G. bulloides</i>	BUL14	Bodega Head	Nov 2014	38.3° N, 123.0° W	14–15 °C	<i>Synechococcus</i> 16S and <i>rbcL</i> *
<i>G. bulloides</i>	BUL15	Bodega Head	Nov 2014	38.3° N, 123.0° W	14–15 °C	<i>Synechococcus</i> 16S and <i>rbcL</i> *
<i>G. bulloides</i>	BUL22	Bodega Head	Nov 2014	38.3° N, 123.0° W	14–15 °C	Metabarcoding
<i>G. bulloides</i>	BUL23	Bodega Head	Nov 2014	38.3° N, 123.0° W	14–15 °C	Metabarcoding
<i>G. bulloides</i>	BUL71	Bodega Head	Apr 2015	38.3° N, 123.0° W	10.5 °C	TEM
<i>G. bulloides</i>	BUL73	Bodega Head	Apr 2015	38.3° N, 123.0° W	10.5 °C	<i>Synechococcus</i> 16S and <i>rbcL</i> *
<i>G. bulloides</i>	BUL74	Bodega Head	Apr 2015	38.3° N, 123.0° W	10.5 °C	<i>Synechococcus</i> 16S and <i>rbcL</i> *
<i>G. bulloides</i>	BUL82	Bodega Head	Apr 2015	38.3° N, 123.0° W	10.5 °C	<i>Synechococcus</i> 16S and <i>rbcL</i> *
<i>G. bulloides</i>	BUL83	Bodega Head	Apr 2015	38.3° N, 123.0° W	10.5 °C	<i>Synechococcus</i> 16S and <i>rbcL</i> *
<i>G. bulloides</i>	BUL84	Bodega Head	Apr 2015	38.3° N, 123.0° W	10.5 °C	<i>Synechococcus</i> 16S and <i>rbcL</i> *
<i>G. bulloides</i>	BUL85	Bodega Head	Apr 2015	38.3° N, 123.0° W	10.5 °C	<i>Synechococcus</i> 16S and <i>rbcL</i> *
<i>G. bulloides</i>	BUL86	Bodega Head	Apr 2015	38.3° N, 123.0° W	10.5 °C	<i>Synechococcus</i> 16S and <i>rbcL</i> *
<i>G. bulloides</i>	BUL88	Bodega Head	Apr 2015	38.3° N, 123.0° W	10.5 °C	<i>Synechococcus</i> 16S and <i>rbcL</i> *

\* PCR amplification of *Synechococcus* 16S rRNA gene and *rbcL* (RuBisCo large subunit).

16S rRNA gene was chosen for amplification using the 515F forward primer and a barcoded 806R reverse primer series (Caporaso et al., 2012). This primer set is widely used by the Earth Microbiome Project (Gilbert et al., 2010), and therefore the amplification biases are known and well documented. For example, there is a bias against amplification of the SAR11 group of marine Alphaproteobacteria and a bias towards over-amplification of Gammaproteobacteria (Apprill et al., 2015; Walters et al., 2016; Parada et al., 2016). Each DNA sample and control was PCR-amplified with a unique barcode tag that enabled demultiplexing of the samples after being pooled for sequencing. The thermal cycling conditions are detailed by Caporaso et al. (2012). PCR reactions contained  $1 \times$  *Taq* buffer plus additional  $\text{MgCl}_2$  (final concentration 2.5 mM), 0.2 mM of each dNTP, 0.25  $\mu\text{M}$  of each primer, 1  $\mu\text{L}$  of template DNA and 1.25 U of *Taq* DNA polymerase (Roche Applied Science), with the volume made up to 25  $\mu\text{L}$  with PCR-grade water (Sigma). All PCR reactions were set up in a PCR6 vertical laminar airflow cabinet with UV sterilisation (Labcaire Systems, Bristol, UK) as described by Pagaling et al. (2014). Reaction tubes and PCR mixtures were treated for 15 min with 15 W UV light (wavelength = 254 nm) to destroy contaminating DNA, prior to addition of dNTPs, *Taq* polymerase and template DNA (Padua

et al., 1999). The six functional and three control PCR reactions were run on a 1 % agarose gel and the products were purified with the Wizard® SV Gel and PCR Clean-Up System (Promega). The purified amplicons were quantified using a Quant-iT PicoGreen ds-DNA assay kit (Life Technologies) prior to pooling at equimolar concentrations for DNA sequencing. The total number of quality-filtered sequencing reads including controls was 862 954. DNA sequencing was performed at Edinburgh Genomics using an Illumina MiSeq v3 to generate 250 base pair (bp) paired-end reads.

### 2.6.1 Quality filtering and contaminant removal

The Quantitative Insights in Microbial Ecology (QIIME, v1.8.0; Caporaso et al., 2010) pipeline was used to assemble paired-end reads and quality-filter the sequences. Raw reads were paired with an overlap of 200 bp and quality-filtered with a minimum Phred score of 20 for maximum accuracy (Kozich et al., 2013). Reads of less than 245 bp (i.e. short reads) were removed from the dataset with the Python script `filter_short_reads.py` from <http://gist.github.com/walterst/7602058>. Chimeras were detected using `Usearch v6.1.544` default settings (Edgar et al., 2011) and version 13\_8 of Greengenes 16S rRNA gene reference database (DeSantis et al., 2006). Given the low yield of endogenous bac-

terial DNA in these small-sized samples, we anticipated that amplicon contamination from PCR amplification reagents, DNA extraction reagents, and the ultra-pure water system would contribute a significant number of DNA sequences and OTUs from contaminant genera to the sample set (Salter et al., 2014; Laurence et al., 2014). Operational taxonomic units with greater than 1000 sequences in any of the three control samples were considered to be potential contaminants and were removed from the sample set. Two OTUs were removed due to contamination in the two PCR controls: a Bradyrhizobiaceae of the class Alphaproteobacteria and an *Acinetobacter* of the class Gammaproteobacteria. Twelve contaminating OTUs were removed due to contamination via the DOC buffer, with eight of these of the class Alphaproteobacteria. Seven of the eight were from the order Rhizobiales, five of which were classified to a higher taxonomic level and included two of additional Bradyrhizobiaceae OTUs and one each of *Methylobacterium*, *Mesorhizobium*, *Pedomicrobium*. The eighth OTU from the class Alphaproteobacteria was a *Sphingomonas* of the order Sphingomonadales. The final four OTUs were *Burkholdaria bryophila* of the class Betaproteobacteria; two *Sediminibacterium* OTUs of the phylum Bacteroidetes; and lastly an OTU identified as a Streptophyta chloroplast. A single Bradyrhizobiaceae OTU was by far the largest contaminant, with a total of 284 636 sequences from all samples and controls, and it is known to be a common contaminant of next-generation sequencing data, along with other Alphaproteobacteria (Laurence et al., 2014).

### 2.6.2 Operational taxonomic unit (OTU) picking and taxonomic assignment

The default QIIME pipeline was used for data analysis: OTU picking and taxonomic assignment. De novo picking (pick\_de\_novo\_otus.py) clusters DNA sequences into OTUs with 97 % similarity with no external reference and selects a representative sequence of each OTU for alignment and subsequent assignment of taxonomy. This script keeps all diversity, including unknowns, in the sample set. Closed reference picking was also performed, which removes OTUs that are not closely matched (<97 %) with OTUs in the Greengenes database (pick\_closed\_reference\_otus.py). This output is required for normalisation by copy number (NBCN) using the online Galaxy tool (<http://huttenhower.sph.harvard.edu/galaxy/>). This corrects the abundance of each OTU to better reflect the true organism abundance by normalising predicted 16S rRNA gene copy number for each OTU. In both OTU picking methods, OTUs with fewer than 10 sequences across all samples were removed from the sample set (filter\_otus\_from\_otu\_table.py).

### 2.6.3 Alpha-rarefaction and sequencing depth

In QIIME, the script alpha\_rarefaction.py was used to assess whether the sequencing depth was adequate to detect

foraminiferal bacterial diversity. Samples were rarefied to the lowest sequencing depth observed across all samples (10 551 in closed-reference picking in sample BUL22) and OTU richness curves were generated, using the observed-species metric, which counts the number of unique OTUs found in a sample.

## 2.7 TEM

TEM was used to observe and document the structural relationships between the endobiotic bacteria and foraminiferal cells. Decalcified *G. bulloides* were fixed in 3 % glutaraldehyde in 0.1 M sodium cacodylate buffer, pH 7.3, for 2 h followed by three 10 min washes in 0.1 M sodium cacodylate. Specimens were then post-fixed in 1 % osmium tetroxide in 0.1 M sodium cacodylate for 45 min, followed by a further three 10 min washes in 0.1 M sodium cacodylate buffer. Specimens were then dehydrated in 50, 70, 90 and 100 % ethanol (X3) for 15 min each, then in two 10 min changes in propylene oxide prior to being embedded in TAAB 812 resin. Sections (1 µm thick) were cut on a Leica Ultracut ultramicrotome, stained with toluidine blue, and then viewed under a light microscope to select suitable specimen areas for investigation. Ultrathin sections (60 nm thick) were cut from selected areas, stained in uranyl acetate and lead citrate and then viewed with a JEOL JEM-1400 Plus TEM.

## 2.8 Genetic identification of *Synechococcus* cells identified in *G. bulloides*

*Synechococcus* cells were found in large numbers inside *G. bulloides* and were genetically characterised. A 422 bp fragment of the *Synechococcus* 16S rRNA gene was amplified from total DNA extracted via the DOC method from individual specimen BUL34 (Table 1). This provided a larger, more informative fragment for phylogenetic analysis compared with the 253 bp generated by 16S rRNA metabarcoding. Cyanobacterial specific primers were used (CYA359f 5'-GGGGAATCYTTCCGCAATGGG-3' and CYA781R a and b 5'-GACTACWGGGGTATCTAATCCCWTT-3'; Nübel et al., 1997) and thermocycler conditions were as follows: 94 °C for 2 min followed by 30 cycles at 94 °C for 15 s, 55 °C for 15 s and 72 °C for 30 s, followed by a final extension at 72 °C for 5 min. PCR reactions were performed with MyTaq REDDY mix (Bioline) and 0.25 µM of each primer and 1 µL of template DNA, with the volume made up to 25 µL with PCR-grade water (Sigma). The PCR product obtained was cloned (TOPO®-TA cloning kit, Invitrogen) and Sanger-sequenced.

Clone sequences were aligned with reference *Synechococcus* 16S rRNA gene sequences retrieved from the GenBank database (NCBI) using ClustalW software within the package MEGA6 (Tamura et al., 2013). Phylogenetic trees (maximum likelihood, neighbour joining, minimum evolution, UPGMA, maximum parsimony; Sect. 3.5) were gen-



erated using the default settings of MEGA6 with 500 bootstrap resamplings to determine the closest taxonomic affiliations (i.e. clade designation sensu Fuller et al., 2003) of the *G. bulloides*-associated *Synechococcus*. Informed by this analysis, further primers were designed that target other signature genes harboured by the *Synechococcus* clades identified, including that for *rbcL*. This phylogenetically informative gene encodes the large subunit of RuBisCO (ribulose-1,5-bisphosphate carboxylase/oxygenase), the primary CO<sub>2</sub>-fixing enzyme found in cyanobacteria. Primers (SynrbcL\_For 5'-CGGCAACTTCTTCGATCAGG-3'; SynrbcL\_Rev1 5'-ATGTCGCGGCTTCTTTCTC-3'; SynrbcL\_Rev2 5'-CCGGCTTCCATAAGGATGTC-3') were designed with Primer 3 (<http://primer3.ut.ee/>) that target a 252 bp fragment of *rbcL* from the most closely related *Synechococcus* spp. (i.e. strains CC9902, CC9311 and WH8120; see below).

Purified DNA from 14 *G. bulloides* specimens (Table 1) generated products of the correct size on PCR amplification with the *rbcL* primers. The product obtained from isolate BUL34 was selected and TA-cloned and DNA-sequenced as described above. PCR reactions were performed in a Biometra Personal Thermocycler using MyTaq REDDY mix (Bio-line) and 0.25 µM of each primer and 1 µL of template DNA, with the volume made up to 25 µL with PCR-grade water (Sigma). Thermocycling conditions were 94 °C for 2 min followed by 30 cycles at 94 °C for 15 s, 56 °C for 15 s and 72 °C for 30 s, followed by a final extension at 72 °C for 5 min.

### 3 Results

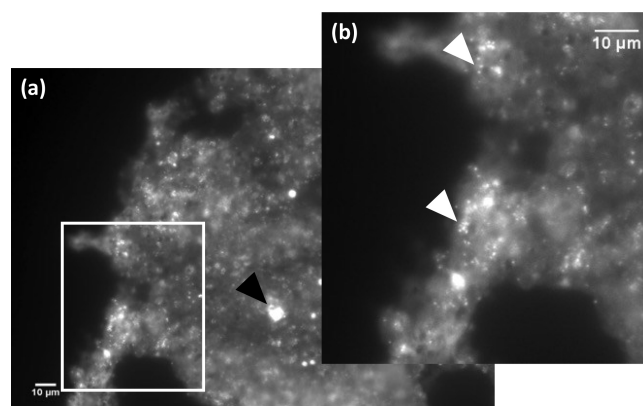
In total, 29 individual specimens of *G. bulloides* collected from waters off Santa Catalina Island and Bodega Head (Fig. 1) were investigated during this study. The sampling information and analyses performed on each specimen are detailed in Table 1, and the sampling strategy and genetic characterisation are described in the methods.

#### 3.1 Genotyping of foraminifera

Partial 18S rRNA (SSU) gene sequences amplified from BUL34 and DUT55 have been submitted to Genbank (NCBI, accession numbers KX816046 and KX816047 respectively). *G. bulloides* specimen BUL34 is type IId and *N. dutertrei* specimen DUT55 is type Ic and it is the first time a ~ 1000 bp fragment has been amplified for this genotype. Both genotypes have been found routinely in the Southern California Bight (Darling et al., 2003).

#### 3.2 Fluorescence microscopy and DAPI staining

Fluorescence microscopy examination of an unstained, fixed *G. bulloides* specimen (BUL21; Table 1; Supplement Fig. S1) under the DAPI filter set demonstrated high levels of diffuse autofluorescence across the entire cell. *G. bul-*

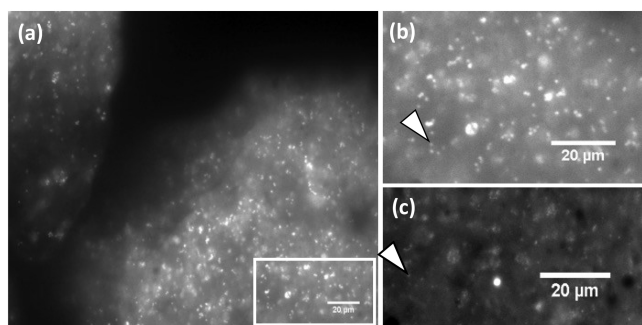


**Figure 2.** Fluorescence micrograph of a DAPI-stained, decalcified *G. bulloides* cell. (a) Diffuse autofluorescence not associated with DNA-stained inclusions can be observed throughout the cytoplasm. The black arrow highlights an example of the bright regions, 3–10 µm in size, that correspond to vacuoles containing condensed prey items. The many ~ 1 µm diameter brightly stained globular structures that occur throughout the cell are consistent with the presence of intracellular bacterial cells. The white rectangle denotes the area magnified in (b) and shows examples (white arrows) of these DNA-containing, bacteria-sized structures and their cytoplasmic location.

*loides* cells that were first stained with DAPI ( $n = 6$ ; Table 1) also showed background autofluorescence, but in addition some more highly fluorescent regions 3–10 µm in size were also observed (Fig. 2a). These stained structures are probably DNA from the foraminiferal nucleus and also DAPI–DNA complexes in organisms sequestered within food vacuoles. Of greater present significance, however, were the very many fluorescent, globular structures of approximately 1 µm diameter observed consistently within all of the *G. bulloides* cells analysed. Their small, regular size is consistent with the presence of intact intracellular (coccoid) bacteria residing within the foraminiferal cell (Fig. 2b). Further microscopic examination of *G. bulloides* using the TRITC filter set also revealed high autofluorescence across the cell but, in addition, brighter fluorescence from many of these approximately 1 µm diameter DNA-containing structures (Fig. 3). This observation is entirely consistent with the presence of the photosynthetic pigment, phycoerythrin (excitation maxima ~ 495, 545 nm, emission maximum 565–580 nm), within many of these intracellular (cyano)bacteria (see below).

#### 3.3 16S rRNA gene metabarcoding

16S rRNA gene metabarcoding was carried out on five specimens of *G. bulloides* and a single specimen of the non-spinose species *Neogloboquadrina dutertrei* for comparison (Table 1). The raw dataset has been submitted to the Sequencing Read Archive (SRA, NCBI) (Bioproject accession number PRJNA341960; SRA accession numbers SRR4271458, SRR4271479, SRR4271493, SRR4271505,



**Figure 3.** Fluorescence micrograph of a decalcified *G. bulloides* cell examined under the TRITC filter set (excitation 540 nm, emission wavelength  $>580$  nm). (a) The cytoplasm from two of the chambers is shown. The autofluorescence localised to the  $\sim 1\ \mu\text{m}$  diameter globular structures found throughout the cell is consistent with the presence of phycoerythrin-containing *Synechococcus*. The white rectangle denotes the area magnified in (b) in which the autofluorescing structures can be seen as discrete entities demonstrating that the cyanobacterial cell membranes are intact (see text). The white arrowheads highlight a group of bacteria that can also be identified by DAPI staining when examined under the DAPI filter set in (c).

SRR4271506, SRR4271507, Bird et al., 2017). A total of 862 954 sequences were generated from the six samples and three controls after quality filtering and removal of short reads ( $<245$  bp) and chimeric sequences (Sect. 2.6.1). In closed-reference picking, after removal of pynast failures, all control sequences (288 985) contaminant OTUs (including 161 282 sequences as result of the single contaminating Bradyrhizobiaceae OTU across all six samples) and OTUs with an abundance of less than 10 sequences across all samples, a total of 214 087 sequences were clustered into OTUs and assigned taxonomy (Sect. 2.6.1 and 2.6.2). The numbers of sequences and OTUs generated in individual specimens for both closed-reference picking and de novo picking are listed in Supplement Table S1. The OTU profiles within a specimen were highly similar between de novo picking and closed-reference picking with normalisation by copy number (NBCN, Sect. 2.6.2). Therefore, we present results for closed-reference picking with NBCN and indicate when de novo picking OTUs are being represented. Rarefaction curves (Fig. S2) for OTU richness confirmed that sequencing depth was sufficient to capture the full bacterial assemblage diversity.

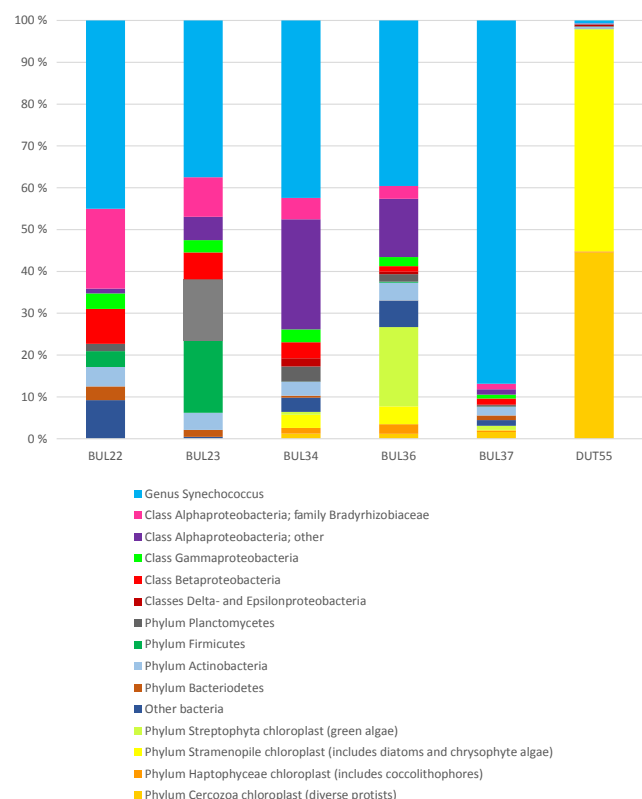
All replicates of *G. bulloides* contained a highly distinctive assemblage of OTUs. The OTU assemblage of an individual *N. dutertrei* (Table 1) sampled at the same time and from the same water mass is shown for direct comparison of the bacterial assemblages of two morphospecies of foraminifera (Fig. 4). Within the five BUL specimens investigated (Table 1), 37–87 % of all sequences belonged to five OTUs assigned to the unicellular, cyanobacterial genus *Synechococcus*

(Fig. 4). This was by far the greatest abundance of a single genus of bacteria; no other genera, or indeed family or order, of bacteria were found across all five BUL specimens at relative abundances consistently more than 2 %. Therefore, the next highest relative abundance group must be described at the class level. Across four (BUL22, BUL23, BUL34, BUL36) of the five BUL specimens 15–31 % of sequences belonged to the class Alphaproteobacteria and were dispersed amongst 81 OTUs. The fifth and outlying specimen (BUL37, containing 87 % *Synechococcus* sequences) contained only 2.6 % Alphaproteobacteria across 37 OTUs. It contained marginally more phylum Actinobacteria (1.8 %) and class Betaproteobacteria (1.4 %) sequences, but the sequence abundances of these classes were more similar to the other BUL specimens. The high relative abundance of *Synechococcus* within this specimen might be due to a lack of feeding on other bacteria or algae immediately prior to sampling, indicative of a high turnover rate for prey bacteria and algal cells.

There were no chloroplast-affiliated OTUs in specimens BUL22 and BUL23. However, 6.4, 27 and 3 % of sequences in specimens BUL34, BUL36 and BUL37 respectively were allocated to chloroplast 16S rRNA gene OTUs from a variety of sources. These were two OTUs from a mixotrophic protist belonging to the diverse, protozoan phylum Cercozoa (Cavalier-Smith and Chao 2003); three OTUs from the phylum of Haptophyte algae, which includes coccolithophores; eight OTUs from the phylum Stramenopile, which includes both diatoms and chrysophyte algae; and, finally, 13 OTUs from the group Streptophyta (an unranked clade of plants that includes green algae).

In de novo picking, *G. bulloides* specimens BUL34, BUL36 and BUL37 contained varying percentages of sequences (25.4, 0.3 and 1.6 % and respectively) in three taxonomically unassigned OTUs, whereas BUL22 and BUL23 did not contain any unassigned sequences. Of all the unassigned sequences, 94 % belonged to a single OTU (e.g. 5878 sequences in sample BUL34) that was 99 % identical (100 % coverage of 253 bp) to an unidentified marine bacterial clone (accession number HQ673258) retrieved from the northeast subarctic Pacific Ocean (Allers et al., 2013). The nearest match (87–89 % similarity over 100 % coverage) to an identified phylum was to a large number of uncultured Verrucomicrobiae bacteria of the phylum Verrucomicrobia from a wide range of habitats, including marine environments. Whilst this was not a particularly close match, it is within the defined limit of  $>85$  % DNA identity that delineates a phylum (Hugenholtz et al., 1998; Rappé and Giovannoni, 2003), albeit based only on a 253 bp fragment. The variation in abundances of this OTU found in each *G. bulloides* individual analysed (25 % in BUL34; 0.3 % in BUL36 and 1.6 % in BUL37) might indicate this bacterium has a patchy distribution and is an opportunistic food source.



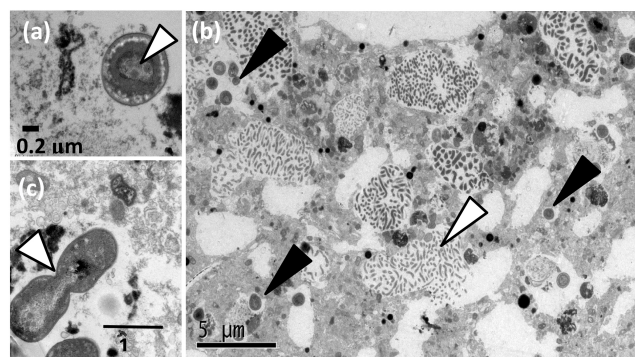


**Figure 4.** Relative abundance of taxonomically assigned 16S rRNA gene sequences from bacteria and chloroplasts within the cytoplasm of six individual foraminifer specimens: five *G. bulloides* (BUL22, BUL23, BUL34, BUL36 and BUL37) and one *N. dutertrei* specimen (DUT55). Sequences are assigned to operational taxonomic units (OTUs) grouped at different levels of taxonomic classification (see key). 16S rRNA gene sequences assigned to OTUs of the genus *Synechococcus* are the most abundant within *G. bulloides* and are at the highest level of classification when compared to the other OTUs assigned to individual classes or phyla.

### 3.4 Transmission electron microscopy

Transmission electron microscopy (TEM) imaging was carried out on four *G. bulloides* specimens (BUL32, BUL39, BUL69, BUL71; Table 1, Fig. 5) to observe whether any endobionts were present within the cell. No intracellular eukaryotic cells were observed, confirming a lack of algal symbionts. However, numerous intact coccoid cells containing carboxysomes (Fig. 5a) within the central cytoplasm surrounded by thylakoid membranes, characteristic of the cyanobacterium *Synechococcus*, were observed throughout the cytoplasm and also in vacuoles of all individual *G. bulloides* observed (Fig. 5b). Approximately 5 % of the observed *Synechococcus* cells were undergoing cell division (Fig. 5c).

To compare foraminiferal cellular *Synechococcus* concentrations with those of the water column, the concentration of *Synechococcus* cells per millilitre of foraminiferal cy-



**Figure 5.** Transmission electron microscope images of *Synechococcus* cells inside *G. bulloides*. (a) A *Synechococcus* cell with characteristic polyhedral carboxysomes in the central cytoplasmic region (white arrow) surrounded by thylakoid membranes. (b) Numerous *Synechococcus* cells within a *G. bulloides* cell are observed in both the cytoplasm and vacuoles (black arrow). This is a region of cytoplasm rich in fibrillar bodies (white arrow) found only in planktonic foraminifera, and whose function is unknown. (c) *Synechococcus* cell within a *G. bulloides* cell undergoing cell division as indicated by the presence of a constriction at the cell midpoint (white arrow).

toplasm was calculated by assuming a conservative average host cell diameter of 200  $\mu\text{m}$  (Spero and Lea, 1996; Aldridge et al., 2012), a spheroid morphology (Geslin et al., 2011) and that the cytoplasm was equivalent to 75 % of the shell volume (Hannah et al., 1994). Based on averaged cell counts from the TEM images, the total number of *Synechococcus* cells within *G. bulloides* occupied less than 2 % of the foraminiferal cell volume but was equivalent to  $3.8 \times 10^9$  *Synechococcus* cells  $\text{mL}^{-1}$ . This is far higher than the well established range of concentrations of *Synechococcus* found throughout the global ocean that range from  $1 \times 10^2$ – $1.5 \times 10^6$  *Synechococcus* cells per millilitre of seawater (Partensky et al., 1999; Paerl et al., 2011). In the Southern California Bight, *Synechococcus* cell counts are generally fewer than  $1.5 \times 10^5$  cells  $\text{mL}^{-1}$  but can reach  $6 \times 10^5$  cells  $\text{mL}^{-1}$  during the blooms that are generally observed in late spring to early summer (Tai and Palenik, 2009; Tai et al., 2011). The concentration of *Synechococcus* in the *G. bulloides* cell was therefore up to 4 orders of magnitude greater than peak bloom concentrations measured in the California Bight. This suggests that *Synechococcus* cells accumulate within the cytoplasm of *G. bulloides* type IId.

### 3.5 Genetic characterisation of intracellular *Synechococcus*

Five *Synechococcus* OTUs were assigned in 16S rRNA gene metabarcoding with closed-reference picking. However, more than 99 % of the BUL *Synechococcus* sequences were assigned to just one of these OTUs. The representative nucleotide sequence (253 bp) of this OTU is a 100 % match to the coastal clade IV *Synechococcus* sp. strain

CC9902, originally isolated from the California Current. Two further OTUs were highly similar to this abundant OTU and were 99 % identical to *Synechococcus* sp. strain CC9902. The remaining two OTUs both had a nucleotide match of 99 % with *Synechococcus* sp. strain WH8020, a clade I strain also found typically in coastal waters. In order to confirm these clade assignments, phylogenetic analysis (Fig. S3) of a larger (422 bp) fragment of the *Synechococcus* 16S rRNA gene generated from BUL34 total DNA was performed. Ten clones (GenBank accession numbers KX815969–KX815978) clustered with the clade IV *Synechococcus* sp. strain CC9902 and two clones (GenBank accession numbers KX815979 and KX815980) clustered with clade I strains CC9311 (another California Current isolate) and WH8020, in agreement with the 16S rRNA gene metabarcoding data. The topologies of the phylogenetic trees produced were all in overall agreement with well-established analyses of *Synechococcus* 16S rRNA genes (Scanlan et al., 2009), confirming the phylogenetic resolution of the sequence data included in the present study.

In addition, a 252 bp fragment of the *Synechococcus* *rbcL* gene was cloned and 230 bp of this clone was DNA-sequenced (GenBank accession number KX816048) from BUL34 (Table 1). A GenBank BLAST search (NCBI) found 100 % nucleotide sequence identity with the RuBisCo large subunit coding region of *Synechococcus* sp. strain CC9902 and 92 % identity with *Synechococcus* sp. strain WH8020, confirming the presence of *Synechococcus* sp. strain CC9902, or a very closely related clade IV strain. The DNA of 13 further *G. bulloides* specimens (Table 1) also yielded products of ~252 bp on amplification with the *Synechococcus* *rbcL* primers confirming the consistency of the association between *G. bulloides* type IId and *Synechococcus* strains in the California Current year round.

## 4 Discussion

Our results highlight a novel endobiotic association between the usually free-living, photoautotrophic picocyanobacterium *Synechococcus* and its host, *G. bulloides* type IId, a genotype of a spinose planktonic foraminiferal morphospecies, barren of protist algal symbionts. Below, we discuss the evidence for this endobiosis, and possible roles of *Synechococcus* in *G. bulloides* host metabolism and its characteristic cytoplasm colouration. A better understanding of *G. bulloides* genotype ecology will ultimately provide ecological information for modelling foraminiferal distribution, abundance and seasonality under different climate regimes and improve the accuracy of the palaeoceanographic proxy records.

### 4.1 Evidence for *Synechococcus* as an abundant endobiont of *Globigerina bulloides* type IId

*G. bulloides* has consistently been reported to be barren of protist algal symbionts (Febvre-Chevalier, 1971; Gastrich, 1987; Hemleben et al., 1989; Spero and Lea, 1996). The current study supports this conclusion, since no intact algal cells were found in any of the *G. bulloides* cell sections examined using TEM. However, we do have strong evidence that *G. bulloides* type IId contains large numbers of the photoautotrophic picocyanobacterium *Synechococcus*. Intact *Synechococcus* cells accumulate within the host cytoplasm in abundances far greater than those found under bloom conditions in the California Bight or in any other foraminiferal species investigated. How this association occurs is unclear, but *G. bulloides* type IId is the only foraminiferal species currently known to associate with *Synechococcus*, an observation that implies a specific potentially mutualistic benefit, particularly since *G. bulloides* does not exploit protist algal symbionts as in other spinose species. Based on the observations discussed below, we propose that these picocyanobacteria are abundant, metabolically active endobionts living within the *G. bulloides* cell, rather than prey.

#### 4.1.1 *Synechococcus* cells are intact and viable

DNA degradation in prey items limits the success of amplification of DNA sequences greater than ~250 bp (Pompanon et al., 2012). In this study we targeted a 253 bp fragment of the 16S rRNA gene via metabarcoding, thus providing information not only on intact, undigested bacteria but also on those bacteria phagocytosed for food. Subsequent TEM imaging has enabled us to distinguish between prey and endobiont. Indeed, TEM images have demonstrated that, of the diversity of bacteria identified in 16S rRNA gene metabarcoding, only *Synechococcus* cells were observable in the *G. bulloides* cell. The *Synechococcus* cell membranes were physically intact (Fig. 5a) and, whilst some *Synechococcus* cells were observed within vacuoles, many were distributed throughout the cytoplasm of *G. bulloides* (Fig. 5b), where digestion does not occur. As many as 5 % of the intracellular *Synechococcus* population were observed to be in the process of cell division (Fig. 5c), indicative of actively growing, viable individuals (Campbell and Carpenter, 1986). Significantly, Bernhard et al. (2000) considered as few as 3 % dividing cells a substantial enough proportion of the population to suggest a symbiotic role for the intracellular bacteria they observed in the benthic foraminifer *Buliminella tenuata*. Further, successful PCR amplification of a longer (422 bp) fragment of the *Synechococcus* 16S rRNA gene suggests that the *Synechococcus* DNA was more intact than might be expected if it were the DNA of a prey organism (i.e. >250 bp; Pompanon et al., 2012). This and the amplification of a second short fragment of the *rbcL* gene provides additional evidence that *Synechococcus* DNA was not

grossly degraded by nucleases. In further confirmation of the intact nature of the intracellular *Synechococcus* population, autofluorescence in the orange/red spectral region arising from the photosynthetic pigment phycoerythrin was readily detected within these DNA-containing endobionts within *G. bulloides* (Fig. 3). Phycoerythrin, a water-soluble biliprotein found routinely in marine *Synechococcus*, rapidly diffuses into the aqueous surroundings if the cell membranes are compromised (Stewart and Farmer, 1984; Wyman, 1992).

#### 4.1.2 *Synechococcus* are endobionts in marine protists

Whilst *Synechococcus* spp. are known primarily as free-living organisms (Waterbury et al., 1979; Richardson and Jackson, 2007), an endobiotic lifestyle has also been observed in association with a number of different marine protist groups. *Synechococcus* has been identified in the benthic foraminifer *Fursenkoina rotundata*, sampled from the benthos at 600 m using both fluorescence microscopy (identified as cyanobacteria by Bernhard et al., 2000) and in TEM imaging (identified as *Synechococcus*; Buck and Bernhard, 2006). At these depths, however, the *Synechococcus* endobionts would be unable to photosynthesise, which rules out the most obvious functional metabolic role for this potential symbiont. *Synechococcus* has also been found living embedded within the extracellular matrix surrounding a marine diatom (Buck and Benthams, 1998), and within a polycystine radiolarian (Yuasa et al., 2012). This study now confirms that they are also to be found within the living cells of at least one type of planktonic foraminifer.

#### 4.1.3 *Synechococcus* cells accumulate in the *G. bulloides* cytoplasm

Intact *Synechococcus* cells accumulate within the *G. bulloides* cytoplasm at densities ( $\sim 3.8 \times 10^9$  cells mL<sup>-1</sup>) that are 4 orders of magnitude more concentrated than those reported in the surrounding seawater (Tai and Palenik 2009; Tai et al., 2011). Whilst DNA sequences from other bacteria were identified by 16S rRNA gene metabarcoding (Fig. 4), no bacterial cells lacking carboxysomes were observed by TEM, indicating that, unlike *Synechococcus*, other bacteria were rapidly digested once taken up. Quite how *Synechococcus* accumulate in the foraminiferal cell is yet to be established. For example, does the host or endobiont instigate the association? Are the cyanobacteria passed on via parental gametes or is the association established via direct uptake of *Synechococcus* from the water column? In the case of planktonic foraminifera harbouring protist algae, a small number of symbionts are taken up directly from the water column (horizontal transmission) rather than being inherited through vertical transmission via parental gametes (Hemleben et al., 1989; Bijma et al., 1990). Juveniles with only 2 to 3 chambers already have  $\sim 3$  to 5 symbionts, and it is assumed that they are taken up from the water column ex-

clusively since no protist symbionts (5–10 µm cell diameter) have been observed within the much smaller flagellated gametes ( $\sim 2.5$  µm; Hemleben et al., 1989). Although picocyanobacteria such as *Synechococcus* are much smaller in size ( $\sim 1$  µm diameter) than algal symbionts and could potentially be inherited via parental gametes, we favour the hypothesis that the *Synechococcus* population within *G. bulloides* is similarly taken up from the water column, despite evidence for both horizontal (Ashton et al., 2003) and vertical transmission (Schweikert and Meyer, 2001) of bacteria within protist hosts.

To investigate the potential mode of transmission of the *Synechococcus*, we compared the strain assemblages within *G. bulloides* to those of the surrounding water column. If the *Synechococcus* endobionts were horizontally transferred to *G. bulloides* via uptake from the water column, we would expect that the diversity of the internal strain assemblage would mirror that of the surrounding waters closely. Alternatively, if the endobionts were vertically transmitted, a degree of genetic drift would be expected between the internal and free-living strains of *Synechococcus* as the result of genetic isolation over time (Wernegreen, 2002; Bright and Bulgheresi, 2010). Off the coast of California, the most prevalent strains of *Synechococcus* are those belonging to clades I and IV (see Fuller et al., 2003) that display seasonal population differences throughout the annual cycle (Tai and Palenik, 2009; Tai, et al., 2011). The *Synechococcus* 16S rRNA gene sequences cloned from a *G. bulloides* specimen collected in July/August (Table 1) show that the strain composition strongly reflects the seasonal cladal distribution patterns that are observed in the water column at that time of year (Tai and Palenik, 2009). Up to 100 % nucleotide identity was found for the 16S rRNA gene clones and the *rbcL* gene sequences of the internal endobionts and those of the free-living clade IV *Synechococcus* sp. strain CC9902, originally isolated from waters off the California coast. Whilst there can be a high degree of diversity among strains seemingly closely related through *rbcL* and 16S rRNA gene phylogenies, this evidence supports a strategy of horizontal rather than vertical transmission for the *G. bulloides* endobionts.

#### 4.1.4 Intracellular OTU relative abundances do not reflect those of the water column

The intracellular 16S rRNA gene OTU profiles of *G. bulloides* were very different from those of the water column assemblages, indicating uptake of specific bacteria from the general microbial population. The foraminifer collection site off Santa Catalina Island in the San Pedro Channel is adjacent to the SPOT sampling location, where seasonality and trophic interactions within the microbial assemblages in the water column have been studied routinely for over a decade (Chow et al., 2013; Cram et al., 2015). In both the surface waters and deep chlorophyll maximum layer, the microbial assemblage at the SPOT sampling site is dominated by OTUs

from the ubiquitous SAR11 group (Giovannoni 1990; Morris et al., 2002) of marine Alphaproteobacteria, which represent over 30 % of the assemblage. In addition, members of the Actinobacteria account for approximately 15 % of OTUs, while the picocyanobacteria represent just 2–5 % of the total bacterioplankton. Of the latter, *Prochlorococcus* dominates the assemblage although *Synechococcus* is also present year round (Chow et al., 2013). The remaining 50 % of the microbial population comprises a series of OTUs from a variety of marine bacteria each representing less than 2 % of the assemblage (Chow et al., 2013). This water column assemblage contrasts strongly with the intracellular 16S rRNA gene OTUs of *G. bulloides*, where between 37 and 87 % of the total number of sequences recovered belong to *Synechococcus* OTUs. It should be noted that no amplification bias towards *Synechococcus* has been reported for this primer set and data from a number of marine locations supports this (Apprill et al., 2016). Strikingly, *Prochlorococcus* sequences were not identified in the three *G. bulloides* specimens collected close to the SPOT sampling location (BUL34, BUL36 and BUL37), even though *Prochlorococcus* represents the majority of the picocyanobacteria in the water column in this region. Further, <4.5 % of OTUs in the amplified *G. bulloides* specimens were assigned to the Actinobacteria (compared to ~15 % in the water column) and no OTUs of the ubiquitous SAR11 group of Alphaproteobacteria were identified in our sample set. However, in part this is likely to be a result of bias against SAR11 clades (Apprill et al., 2015; Walters et al., 2015) in the primer set used in this study (Caporaso et al., 2012).

The composition of the internal microbial population of the *G. bulloides* cells clearly does not mirror that of the surrounding water column, highlighting the genotype-specific nature of the OTU assemblages observed within the *G. bulloides* cell. This observation is reinforced by the fact that the intracellular OTU assemblage within *G. bulloides* also differs substantially from those identified within specimens of the non-spinose species *N. dutertrei* (e.g. DUT55; Fig. 4), collected at the same time and location. *N. dutertrei* contains ~2 % bacterial OTUs, with the majority of OTUs (>97 %) being assigned to Stramenopiles (a group that includes diatoms and chrysophyte algae; 53 %) and Cercozoa (a diverse phylum of mixotrophic protists; 44.5 %). This highlights again the morphospecies/genotype-specific nature of the *G. bulloides* intracellular OTU assemblage.

#### 4.1.5 Unusual cytoplasm colouration of *G. bulloides*: a role for endobiotic *Synechococcus*

Living *G. bulloides* cells often exhibit a distinctive brown colouration in the specimens found off the coast of California (Spero and Lea, 1996) that is not a general feature of the other spinose species in the region. The discovery of phycoerythrin-containing *Synechococcus* within the cytoplasm of the foraminifera reported here provides a plausible

explanation for this unusual property. A number of *Synechococcus* strains isolated from the California Current are brown in colour owing to the production of urobilin-rich phycoerythrins (Toledo and Palenik, 1997). Many of the clade I and IV strains with which the *G. bulloides* endobionts cluster in phylogenetic analysis are type IV chromatic adapters that exhibit elevated concentrations of this urobilin-rich phycoerythrin (Six et al., 2007) as well as the photoprotective carotenoid zeaxanthin (Bidigare et al., 1989) under blue light (i.e. under the illumination conditions typical of the oligotrophic waters off the California coast from which the samples were obtained during the present study). The presence of these pigments within the *Synechococcus* endobionts therefore probably contributes to the unusual cytoplasm colouration observed in *G. bulloides* from this location.

#### 4.2 Potential metabolic roles for the *G. bulloides* endobionts

There are some obvious potential metabolic benefits to each organism in a *G. bulloides*–*Synechococcus* partnership. Firstly, the foraminifer might benefit from a supply of photosynthetically fixed carbon, as is the case with the foraminifera that harbour protist algal symbionts (Caron et al., 1995; Uhle et al., 1997, 1999). If this were the sole benefit, however, one would question why *G. bulloides* preferentially recruits *Synechococcus* for this purpose, rather than the more conventional algal symbionts found in other species. One possible explanation is that *G. bulloides* inhabits a wide range of depths that often extend below the photic zone and it is also common in unstable upwelling waters, where potential algal symbionts may not thrive. *Synechococcus* has been found alive in aphotic waters at depths of 600 m (Bernhard et al., 2000), and has been shown to assimilate carbon mixotrophically (Paoli et al., 2008). It could therefore augment phototrophy with carbon assimilated through (photo)heterotrophy, depending on the water column depth of the host. In addition, some *Synechococcus* strains within clade I and those so far characterised in clade IV, as found in *G. bulloides*, are chromatic adapters, able to modify their pigment composition and absorption properties depending on the underwater light field (Six et al., 2007). Such adaptability might make *Synechococcus* a more compatible symbiont for the *G. bulloides* lifestyle.

Alternatively, *Synechococcus* may have additional or quite separate functional roles in association with *G. bulloides* beside endobiotic photosynthetic activity within the photic zone. For example, approximately half of the nitrogen assimilated by the host cell in the *Orbulina universa* foraminifer–symbiont system is transferred via the algal symbionts, a contribution that increases further to ~90–100 % in nitrate-depleted waters (Uhle et al., 1999). *Synechococcus* has a very high affinity for combined nitrogen (e.g. nitrate, nitrite and ammonium) and accumulates expanded stores of this element within its light-harvesting phycobilisomes un-

der N-replete conditions (Wyman et al., 1985). Likewise, *Synechococcus* sequesters large stores of P within its cells as polyphosphate, even under low external concentrations (Martin et al., 2014). These nutrient reservoirs could be readily mobilised and exploited by the foraminiferal cell, particularly prior to gametogenesis, when planktonic foraminifera require extra elemental resources for DNA production (Hemleben et al., 1989). For *Synechococcus*, being housed within a foraminiferal cell could protect it from grazers and the multitude of cyanophages present in the water column (Suttle and Chan, 1994; Mühling et al., 2005). *Synechococcus* may also benefit presumably from a supply of host metabolic by-products or from specific nutrients as products of prey digestion.

#### 4.3 Feeding preferences and life strategy of *G. bulloides* type IId

TEM in combination with 16S rRNA gene metabarcoding enables identification of both bacteria and eukaryotic chloroplasts within the foraminiferal cell. This methodology does not amplify eukaryotic, nuclear-encoded (18S) rRNA genes and, as a result, does not provide any information about the non-chloroplast-bearing zooplankton prey of *G. bulloides*. Observations of large numbers of freshly collected specimens of *G. bulloides* confirm that they feed on small zooplankton prey as well as phytoplankton (Spero and Lea, 1996). Amongst the latter, a preference for some species of diatoms and chlorophytes over dinoflagellates or chrysophytes has been reported (Lee et al., 1966). Interestingly, however, two of the five *G. bulloides* specimens in this metabarcoding study (BUL22, BUL23) did not contain any chloroplast DNA, indicating that they had not fed on phytoplankton prior to sampling. However, these specimens were sampled in November (off Bodega Head) during the period of relaxation in upwelling, from vertically integrated net tows and may have been obtained from resident populations as deep as 150 m. In contrast, the three individuals in which chloroplast 16S rRNA sequences were present (BUL34, BUL36 and BUL37) were sampled from shallow water nets in July/August (off Santa Catalina Island) towards the end of the weak summer upwelling period. These differences in OTU composition therefore could be as a result of location, depth or seasonal differences in available diet. The three *G. bulloides* with chloroplast sequences (6.4, 27 and 3 %, respectively) were clearly feeding on a range of photosynthesising eukaryotes (Sect. 3.3). OTUs indicate these to be Cercozoa (mixotrophic protists), Streptophyta (which includes green algae), Haptophyta (which includes coccolithophores) and Stramenopiles (which includes both diatoms and chrysophyte algae).

Our data suggest that *G. bulloides* may also utilise bacteria as a significant food source. *G. bulloides* contained 33.7–62.5 % of non-*Synechococcus* bacterial sequences within the cell (BUL37 was an outlier with only 10 %, Fig. 4), corre-

sponding to a diverse assemblage of 200 OTUs. We assume that these sequences are derived from prey species because no intact bacteria lacking the carboxysomes and thylakoid membranes found in *Synechococcus* were observed in TEM images of the *G. bulloides* cytoplasm or non-digestive vacuoles. The most abundant group of sequences recovered (15–31 %, outlier BUL37 contained 2.6 %) comprise 81 OTUs belonging to the class Alphaproteobacteria (including those OTUs of the family Bradyrhizobiaceae that were not excluded as contaminants), perhaps indicating a preferential selection of specific members within this class. The remaining 17–47.5 % (outlier BUL37, 7.5 %) of sequences were made up of a diverse collection representing other major phyla of bacteria (Sect. 3.3; Fig. 4), including the Acidobacteria, Actinobacteria, Bacteroidetes, Firmicutes and Planctomycetes and the classes Beta- and Gammaproteobacteria of the phylum Proteobacteria.

*G. bulloides* type IId is found throughout the year in the Southern California Bight, where it is exposed to cool upwelling periods of high productivity and also to warmer periods characterised by more stratified, less productive conditions (Darling et al., 2003; Darling and Wade, 2008). It has a relatively high growth rate, possibly reproducing within 2–3 weeks (Spero and Lea, 1996; Lombard et al., 2009). In combination with our data, this suggests that *G. bulloides* type IId is a generalist predator with an opportunistic feeding strategy, utilising bacterioplankton as well as phyto- and zooplankton, the proportions of which may be seasonal and depth-dependent. Such opportunism may enable *G. bulloides* to grow and reproduce rapidly within its diverse habitat. We propose two hypotheses for the life strategy of *G. bulloides* type IId to survive the challenges presented within the broad seasonal changes in the region. The first is that it is a mixotrophic feeder (Mitra et al., 2016) and that the *Synechococcus* endobionts are photosynthesising symbionts contributing fixed carbon to the foraminiferal host. In this scenario, they would be fulfilling a functional role similar to that of algal symbionts in other spinose species, and in particular could provide additional resources during the maximum growth phase of the shallow-dwelling juveniles. Alternatively, or concurrently, *Synechococcus* may be exploited by *G. bulloides* type IId for its nutrient assimilation and storage capacity and then digested as an extra energy, nitrogen and phosphate source for DNA replication at reproduction.

#### 4.4 The importance of genotype ecology

Since *G. bulloides* occurs in great abundance in cool, high latitudes and mid- to lower-latitude upwelling systems (Kleijne et al., 1989; Naidu and Malmgren, 1996), it is one of the most commonly used planktonic foraminifera for palaeoclimate reconstruction (Sautter and Thunell, 1991; Spero and Lea 1996). In order to reconstruct past changes in oceanic conditions using the shell geochemical data, it is important to obtain a thorough understanding of the relationship

between foraminiferal ecology and the geochemistry of its shell. This relationship is based on the assumption that each foraminiferal morphospecies represents a genetically continuous species with a unique habitat preference. However, since *G. bulloides* inhabits such a wide range of different ecosystems, it is not surprising that several ecologically distinct genotypes have been recognised (Darling et al., 1999; Kucera and Darling, 2002; Darling and Wade, 2008; Sears et al., 2012; Morard et al., 2013). Indeed, recent species delineation studies support species status for several of the *G. bulloides* genotypes (André et al., 2014), including *G. bulloides* type IId. Such diversity could result in genotype-specific geochemical signatures across the morphospecies (Healy-Williams, 1985; Bijma et al., 1998; de Vargas, 2001; Kucera and Kennet, 2002; Sadkov et al., 2016). Both Kucera and Darling (2002) and Morard et al. (2013) have demonstrated that, based on ecological knowledge, integrating *G. bulloides* genotypes into assemblage-based SST reconstructions significantly improves resolution. This demonstrates the value in understanding the ecology of genotypes within a morphospecies and the necessity of establishing whether the association between *G. bulloides* type IId and *Synechococcus* is universal across this foraminiferal morphospecies complex.

#### 4.5 Implications for palaeoceanography

The discovery of intracellular bacteria within a palaeoceanographically significant foraminiferal host may lead to a significant improvement in our current understanding of foraminiferal shell geochemistry. The carbon isotopic composition of planktonic foraminifera has the potential to help reconstruct changes in the chemocline of the surface ocean, providing insights into changes in ocean circulation (Spero et al., 2003). However, the interpretation of  $\delta^{13}\text{C}$  data is often complicated by poor understanding of the causes of offsets between shell  $\delta^{13}\text{C}$  and the  $\delta^{13}\text{C}$  of the dissolved inorganic carbon from which foraminifera build their shells. In particular, the  $\delta^{13}\text{C}$  of *G. bulloides* shells deviates from predicted values more than that of any other extant species (Deuser et al., 1981; Kahn and Williams, 1981; Curry and Matthews, 1981; Kroon and Darling, 1995; Spero and Lea, 1996; Bijma et al., 1999), implying consistent use of metabolic carbon during calcification by this morphospecies (Deuser et al., 1981).

Symbiont photosynthesis as well as symbiont and host respiration alters the chemical microenvironment surrounding the host shell, which in turn influences their shell geochemical signatures (Rink et al., 1998; Wolf-Gladrow et al., 1999; Eggins et al., 2004). In this *G. bulloides*/*Synechococcus* association, respiration of both endobiont and host would contribute  $^{13}\text{C}$ -depleted  $\text{CO}_2$  to the calcifying microenvironment (Spero and Lea, 1996), whilst *Synechococcus* photosynthesis would counteract this by preferentially removing  $^{12}\text{CO}_2$  and hence elevating  $^{13}\text{C}/^{12}\text{C}$  ratios in the remaining dissolved

$\text{CO}_2$ , as occurs in protist algal symbiont-bearing planktonic foraminifera (Spero et al., 1997). The large offset towards  $^{13}\text{C}$ -depleted values measured in *G. bulloides* suggests that *Synechococcus* respiration dominates the shell geochemical signature, and implies that photosynthesis is not the primary role of *Synechococcus* in this association (Sect. 4.2). The presence of metabolically active *Synechococcus* in *G. bulloides* type IId therefore may account for the unusual shell  $\delta^{13}\text{C}$  determined via culture-based studies conducted at Santa Catalina Island. Since *G. bulloides* type IId is abundant here, it is unlikely that variation in genotype has contributed to uncertainties in these calibrations, but applying these culture-based calibrations to other regions in which different genotypes dominate may produce erroneous results (Darling et al., 2003). It is therefore of particular importance to determine whether the *Synechococcus*/*G. bulloides* association exists in other *G. bulloides* genotypes in order to generate and apply genotype-specific palaeoclimate calibrations.

#### 5 Conclusions

This is the first report of bacterial endobionts within a planktonic foraminiferal species. Our results show that the picocyanobacteria *Synechococcus* is found in large numbers within the protist algal symbiont-barren foraminifer, *G. bulloides*. *Synechococcus* is taken up from the water column by the host and lives and divides within the host cytoplasm at substantially higher concentrations ( $\sim 4$  orders of magnitude) than those found in the surrounding seawater. Its role is not yet known, but its potential for both phototrophy and (photo)heterotrophy makes *Synechococcus* an ideal symbiont for *G. bulloides* as it occupies water depths both within and below the photic zone. Additionally, the ability of *Synechococcus* to store P as polyphosphate, and N within biliproteins under nitrogen-replete conditions, would be beneficial for a foraminiferal host exhibiting fast reproductive turnover, with a high nutrient and energy demand at gametogenesis. Further experiments are required on the *G. bulloides* type IId/*Synechococcus* association to elucidate the full relationship between the two organisms. More investigations are also needed of the *G. bulloides* morphospecies globally in order to determine how widespread the association is to improve understanding and accuracy of this species as a palaeoclimate proxy.

In this study we have demonstrated that 16S rRNA gene metabarcoding of the intracellular DNA of planktonic foraminifera and TEM has the potential to provide new insights into the biological associations and seasonal feeding preferences of ecologically distinct genotypes of planktonic foraminifera. With the addition of 18S rRNA gene metabarcoding to target protist and multicellular zooplankton, next-generation DNA sequencing technologies could transform the usefulness and accuracy of planktonic foraminiferal global distribution and seasonality models by providing the



essential ecological information currently unavailable (Fraile et al., 2008; Lombard et al., 2011; Roy et al., 2015).

## 6 Data availability

Sanger DNA sequences are available from Genbank at <http://www.ncbi.nlm.nih.gov>, under accession numbers KX816046, KX816047, KX815969, KX815980 and KX816048. The Illumina next-generation sequencing dataset is available at <http://www.ncbi.nlm.nih.gov/bioproject/?term=PRJNA341960> (Bird et al., 2017) in the Sequencing Read Archive (SRA); BioProject accession number PRJNA341960; SRA run accession numbers SRR4271458, SRR4271479, SRR4271493, SRR4271505, SRR4271506 and SRR4271507 (Bird et al., 2017).

**The Supplement related to this article is available online at doi:10.5194/bg-14-901-2017-supplement.**

**Author contributions.** Clare Bird conceived and devised the project and methods, carried out the lab work and prepared the manuscript. Kate F. Darling and Bryne T. Ngwenya advised on methodology. Ann D. Russell, Catherine V. Davis and Jennifer Fehrenbacher collected planktonic foraminifera. Andrew Free contributed to next-generation sequencing and analysis. Michael Wyman contributed to analysis of *Synechococcus* DNA. Clare Bird and Kate F. Darling wrote the manuscript with contributions from all co-authors.

**Competing interests.** The authors declare that they have no conflict of interest.

**Acknowledgements.** Clare Bird is a Daphne Jackson Fellow sponsored by NERC and the University of Edinburgh via the Daphne Jackson Trust. This work was also supported by a NERC award to Michael Wyman (ref: NE/K015095/1). Field collections were supported by the NSF (grant number OCE-1261519). The authors would like to sincerely thank Bärbel Hönisch for collecting foraminifera for this study in July/August 2013. Thanks are also extended to Edinburgh Genomics and Steve Mitchell and Dave Kelly of Edinburgh University for microscopy assistance.

Edited by: H. Kitazato

Reviewed by: two anonymous referees

## References

Anand, P., Elderfield, H., and Conte, M. H.: Calibration of Mg/Ca thermometry in planktonic foraminifera from a sediment trap time series, *Paleoceanography*, 18, 1050 doi:10.1029/2002PA000846, 2003.

- Aldridge, D., Beer, C. J., and Purdie, D. A.: Calcification in the planktonic foraminifera *Globigerina bulloides* linked to phosphate concentrations in surface waters of the North Atlantic Ocean, *Biogeosciences*, 9, 1725–1739, doi:10.5194/bg-9-1725-2012, 2012.
- Allers, E., Wright, J. J., Konwar, K. M., Howes, C. G., Beneze, E., Hallam, S. J., and Sullivan, M. B.: Diversity and population structure of Marine Group A bacteria in the Northeast subarctic Pacific Ocean, *ISME J.*, 7, 256–268, doi:10.1038/ismej.2012.108, 2012.
- André, A., Quillévéré, F., Morard, R., Ujjié, Y., Escarguel, G., de Vargas, C., de Garidel-Thoron, T., and Douady, C. J.: SSU rDNA Divergence in Planktonic Foraminifera: Molecular Taxonomy and Biogeographic Implications, *Plos One*, 9, e104641, doi:10.1371/journal.pone.0104641, 2014.
- Ashton, M., Rosado, W., Govind, N. S., and Tosteson, T. R.: Culturable and nonculturable bacterial symbionts in the toxic benthic dinoflagellate *Ostreopsis lenticularis*, *Toxicon*, 42, 419–424, doi:10.1016/S0041-0101(03)00174-0, 2003.
- Apprill, A., McNally, S., Parsons, R., and Weber, L.: Minor revision to V4 region SSU rRNA 806R gene primer greatly increases detection of SAR11 bacterioplankton, *Aquat. Microb. Ecol.*, 75, 129–137, doi:10.3354/ame01753, 2015.
- Bé, A. W. H., Spero, H. J., and Anderson, O. R.: Effects of symbiont elimination and reinfection on the life processes of the planktonic foraminifer *Globigerinoides sacculifer*, *Mar. Biol.*, 70, 73–86, doi:10.1007/BF00397298, 1982.
- Beier, C. L., Horn, M., Michel, R., Schweikert, M., Görtz, H.-D., and Wagner, M.: The genus *Caedibacter* comprises endosymbionts of *Paramecium* spp. related to the *Rickettsiales* (Alphaproteobacteria) and to *Francisella tularensis* (Gammaproteobacteria), *Appl. Environ. Microb.*, 68, 6043–6050, doi:10.1128/AEM.68.12.6043-6050.2002, 2002.
- Bemis, B. E., Spero, H. J., Bijma, J., and Lea, D. W.: Reevaluation of the oxygen isotopic composition of planktonic foraminifera: Experimental results and revised paleotemperature equations, *Paleoceanography*, 13, 150–160, doi:10.1029/98PA00070, 1998.
- Bemis, B. E., Spero, H. J., Lea, D. W., and Bijma, J.: Temperature influence on the carbon isotopic composition of *Globigerina bulloides* and *Orbulina universa* (planktonic foraminifera), *Mar. Micropaleontol.*, 38, 213–228, doi:10.1016/S0377-8398(00)00006-2, 2000.
- Bemis, B. E., Spero, H. J., and Thunell, R. C.: Using species-specific paleotemperature equations with foraminifera: a case study in the Southern California Bight, *Mar. Micropaleontol.*, 46, 405–430, doi:10.1016/S0377-8398(02)00083-X, 2002.
- Bernhard, J. M., Buck, K. R., Farmer, M. A., and Bowser, S. S.: The Santa Barbara Basin is a symbiosis oasis, *Nature*, 403, 77–80, doi:10.1038/47476, 2000.
- Bernhard, J., Habura, A., and Bowser, S.: An endobiont-bearing allogromiid from the Santa Barbara Basin: Implications for the early diversification of foraminifera, *J. Geophys. Res.*, 111, G03002, doi:10.1029/2005JG000158, 2006.
- Bernhard, J. M., Edgcomb, V. P., Casciotti, K. L., McIlvin, M. R., and Beaudoin, D. J.: Denitrification likely catalyzed by endobionts in an allogromiid foraminifer, *ISME J.*, 6, 951–960, doi:10.1038/ismej.2011.171, 2012.
- Bidigare R. R., Schofield, O., and Prézelin, B. B.: Influence of zeaxanthin on quantum yield of photosynthesis of *Synechococ-*

- cus* clone WH7803 (DC2), Mar. Ecol. Prog. Ser., 56, 177–188, doi:10.3354/meps056177, 1989.
- Bijma, J., Erez, J., and Hemleben, C.: Lunar and semi-lunar reproductive cycles in some spinose planktonic foraminifers, J. Foramin. Res., 20, 117–127, doi:10.2113/gsjfr.20.2.117, 1990.
- Bijma, J., Hemleben, C., Huber, B. T., Erlenkeuser, H., and Kroon, D.: Experimental determination of the ontogenetic stable isotope variability in two morphotypes of *Globigerinella siphonifera* (d'Orbigny), Mar. Micropaleontol., 35, 141–160, 1998.
- Bijma, J., Spero, H. J., and Lea, D. W.: Reassessing foraminiferal stable isotope geochemistry: Impact of the oceanic carbonate system (experimental results), in: Use of proxies in paleoceanography, edited by: Fischer, G. and Wefer, G., Springer-Verlag, Berlin Heidelberg New York, 489–512, 1999.
- Bird, C., Darling, K. F., Russell, A. D., Davis, C. V., Fehrenbacher, J., Free, A., Wyman, M., and Ngwenya, B. T.: Sequencing Read Archive data set, BioProject accession number PRJNA341960, Cyanobacterial endobionts within a major marine planktonic calcifier (*Globigerina bulloides*, foraminifera) revealed by 16S rRNA metabarcoding, available at: <http://www.ncbi.nlm.nih.gov/bioproject/?term=PRJNA341960>, last access: 23 February 2017.
- Bright, M. and Bulgheresi, S.: A complex journey: transmission of microbial symbionts, Nat. Rev. Microbiol., 8, 218–230, doi:10.1038/nrmicro2262, 2010.
- Buck, K. R. and Benthall, W. N.: A novel symbiosis between a cyanobacterium, *Synechococcus* sp., an aplastidic protist, *Solenicola setigera*, and a diatom, *Leptocylindrus mediterraneus*, in the open ocean, Mar. Biol., 132, 349–355, doi:10.1007/s002270050401, 1998.
- Buck, K. R. and Bernhard, J. M.: Protistan-Prokaryotic symbioses in deep-sea sulfidic sediments, in: Symbiosis: mechanisms and model systems, edited by: Seckbach, J., Kluwer Academic Publishers, doi:10.1007/0-306-48173-1, 2006.
- Campbell, L. and Carpenter E. J.: Diel patterns of cell division in marine *Synechococcus* spp. (Cyanobacteria): use of the frequency of dividing cells technique to measure growth rate, Mar. Ecol. Prog. Ser., 32, 139–148, 1986.
- Caporaso, G., Kuczynski, J., Stombaugh, J., Bittinger, K., Bushman, F., Costello, E., Fierer, N., Peña, A., Goodrich, J., Gordon, J., Huttley, G., Kelley, S., Knights, D., Koenig, J., Ley, R., Lozupone, C., McDonald, D., Muegge, B., Pirrung, M., Reeder, J., Sevinsky, J., Turnbaugh, P., Walters, W., Widmann, J., Yatsunenko, T., Zaneveld, J., and Knight, R.: QIIME allows analysis of high-throughput community sequencing data, Nat. Methods, 7, 335–336, doi:10.1038/nmeth.f.303, 2010.
- Caporaso, G., Lauber, C., Walters, W., Berg-Lyons, D., Huntley, J., Fierer, N., Owens, S., Betley, J., Fraser, L., Bauer, M., Gormley, N., Gilbert, J., Smith, G., and Knight, R.: Ultra-high-throughput microbial community analysis on the Illumina HiSeq and MiSeq platforms, ISME J., 6, 1621–1624, doi:10.1038/ismej.2012.8, 2012.
- Caron, D. A., Michaels, A. F., and Swanberg, N. R.: Primary productivity by symbiont-bearing planktonic sarcodines (*Acantharia*, *Radiolaria*, *Foraminifera*) in surface waters near Bermuda, J. Plankton Res., 17, 103–129, doi:10.1093/plankt/17.1.103, 1995.
- Cavalier-Smith, T. and Chao, E. E.: Phylogeny and classification of phylum Cercozoa (Protozoa), Protist, 154, 341–58, doi:10.1078/143446103322454112, 2003.
- Checkley, D. M. and Barth, J. A.: Patterns and processes in the California Current System, Prog. Oceanogr., 83, 49–64, doi:10.1016/j.pocean.2009.07.028, 2009.
- Chow, C.-E. T., Sachdeva, R., Cram, J. A., Steele, J. A., Needham, D. M., Patel, A., Parada, A. E., and Fuhrman, J. A.: Temporal variability and coherence of euphotic zone bacterial communities over a decade in the Southern California Bight, ISME J., 7, 2259–2273, doi:10.1038/ismej.2013.122, 2013.
- Cram, J. A., Chow, C.-E. T., Sachdeva, R., Needham, D. M., Parada, A. E., Steele, J. A., and Fuhrman, J. A.: Seasonal and interannual variability of the marine bacterioplankton community throughout the water column over ten years, ISME J., 9, 563–580, doi:10.1038/ismej.2014.153, 2015.
- Curry, W. B. and Matthews, R. K.: Equilibrium  $^{18}\text{O}$  fractionation in small size fraction planktic foraminifera: Evidence from recent Indian Ocean sediments, Mar. Micropaleontol., 6, 327–337, 1981.
- Darling, K. F., Wade, C. M., Kroon, D., Leigh Brown, A. J., and Bijma, J.: The diversity and distribution of modern planktic foraminiferal small subunit ribosomal RNA genotypes and their potential as tracers of present and past ocean circulations, Paleoceanography, 14, 3–12 doi:10.1029/1998PA900002, 1999.
- Darling, K. F., Wade, C. M., Stewart, I. A., Kroon, D., Dingle, R., and Brown, A. J.: Molecular evidence for genetic mixing of Arctic and Antarctic subpolar populations of planktonic foraminifers, Nature, 405, 43–47, doi:10.1038/35011002, 2000.
- Darling, K. F., Kucera, M., Wade, C. M., von Langen, P., and Pak, D.: Seasonal distribution of genetic types of planktonic foraminifer morphospecies in the Santa Barbara Channel and its paleoceanographic implications, Paleoceanography, 18, 1032–1043, doi:10.1029/2001PA000723, 2003.
- Darling, K. F. and Wade, C.: The genetic diversity of planktic foraminifera and the global distribution of ribosomal RNA genotypes, Mar. Micropaleontol., 67, 216–238, doi:10.1016/j.marmicro.2008.01.009, 2008.
- Davis, C. V., Hill, T. M., Russell, A. D., Gaylord, B. P., and Jahncke, J. and: Seasonality in planktic foraminifera of the central California coastal upwelling region, Biogeosciences, 13, 5139–5150, doi:10.5194/bg-13-5139-2016, 2016.
- Decelle, J., Colin, S., and Foster, R. A.: Photosymbiosis in marine planktonic protists, in: Marine Protists: Diversity and Dynamics, edited by: Ohtsuka, S., Suzuki, T., Horiguchi, T., Suzuki, N. and Not, F., Springer Japan, doi:10.1007/978-4-431-55130-0\_19, 2015.
- DeSantis, T. Z., Hugenholtz, P., Larsen, N., Rojas, M., Brodie, E. L., Keller, K., Huber, T., Dalevi, D., Hu, P., and Andersen, G. L.: Greengenes, a Chimera-Checked 16S rRNA Gene Database and Workbench Compatible with ARB, Appl. Environ. Microb., 72, 5069–5072, doi:10.1128/AEM.03006-05, 2006.
- Deuser, W. G., Ross, E. H., Hemleben, C., and Spindler, M.: Seasonal changes in species composition, numbers, mass, size, and isotopic composition of planktonic foraminifera settling into the deep Sargasso Sea, Palaeogeogr., Palaeoclimatol., 33, 103–127, doi:10.1016/0031-0182(81)90034-1, 1981.
- de Vargas, C., Renaud, S., Hilbrecht, H., and Pawlowski, J.: Pleistocene adaptive radiation in *Globorotalia truncatulinoides*: genetic, morphologic, and environmental evidence, Paleobiology, 27, 104–125, doi:10.1666/0094-8373(2001)027<0104:PARIGT>2.0.CO;2, 2001.

- Edgar, R., Haas, B. J., Clemente, J. C., Quince, C., and Knight, R.: UCHIME improves sensitivity and speed of chimera detection, *Bioinformatics*, 27, 2194–2200, doi:10.1093/bioinformatics/btr381, 2011.
- Eggins, S. M., Sadekov, A., and De Deckker, P.: Modulation and daily banding of Mg/Ca in *Orbulina universa* tests by symbiont photosynthesis and respiration: a complication for seawater thermometry?, *Earth Planet. Sc. Lett.*, 225, 411–419, doi:10.1016/j.epsl.2004.06.019, 2004.
- Febvre-Chevalier, C.: Constitution ultrastructural de *Globigerina bulloides* d'Orbigny (Rhizopoda-Foraminifera), *Protistologica*, 7, 311–324, 1971.
- Feely, R. A., Sabine, C. L., Lee, K., Berelson, W., Kleypas, J., Fabry, V. J., and Millero, F. J.: Impact of anthropogenic CO<sub>2</sub> on the CaCO<sub>3</sub> system in the oceans, *Science*, 305, 362–6, doi:10.1126/science.1097329, 2004.
- Field, D. B.: Variability in vertical distributions of planktonic foraminifera in the California Current: Relationships to vertical ocean structure, *Paleoceanography*, 19, PA2014, doi:10.1029/2003PA000970, 2004.
- Fokin, S. I.: Bacterial endocytobionts of ciliophora and their interactions with the host cell, *Int. Rev. Cytol.*, 236, 181–249, doi:10.1016/S0074-7696(04)36005-5, 2004.
- Fraile, I., Schulz, M., Mulitza, S., and Kucera, M.: Predicting the global distribution of planktonic foraminifera using a dynamic ecosystem model, *Biogeosciences*, 5, 891–911, doi:10.5194/bg-5-891-2008, 2008.
- Fuller, N. J., Marie, D., Partensky, F., Vaulot, D., Post, A. F., and Scanlan, D. J.: Clade-specific 16S ribosomal DNA oligonucleotides reveal the pre-dominance of a single marine *Synechococcus* clade throughout a stratified water column in the Red Sea, *Appl. Environ. Microb.*, 69, 2430–2443, doi:10.1128/AEM.69.5.2430-2443.2003, 2003.
- García-Reyes and Largier: Seasonality of coastal upwelling off central and northern California: New insights, including temporal and spatial variability, *J. Geophys. Res.-Oceans*, 117, C03028, doi:10.1029/2011jc007629, 2012.
- Gast, R. J., Sanders, R. W., and Caron, D. A.: Ecological strategies of protists and their symbiotic relationships with prokaryotic microbes, *Trends Microbiol.*, 17, 563–569, doi:10.1016/j.tim.2009.09.001, 2009.
- Gastrich, M.: Ultrastructure of a new intracellular symbiotic alga found within planktonic foraminifera, *J. Phycol.*, 23, 623–632, doi:10.1111/j.1529-8817.1987.tb04215.x, 1987.
- Gastrich, M. and Bartha, R.: Primary productivity in the planktonic foraminifer *Globigerinoides ruber* (d'Orbigny), *J. Foramin. Res.*, 18, 137–142, doi:10.2113/gsjfr.18.2.137, 1988.
- Geslin, E., Risgaard-Petersen, N., Lombard, F., Metzger, E., Langlet, D., and Jorissen, F.: Oxygen respiration rates of benthic foraminifera as measured with oxygen microensors, *J. Exp. Mar. Biol. Ecol.*, 396, 108–114, doi:10.1016/j.jembe.2010.10.011, 2011.
- Gilbert, J. A., Jansson, J. K., and Knight, R.: The Earth Microbiome Project: successes and aspirations, *BMC Biol.*, 12, 69–72, doi:10.1186/s12915-014-0069-1, 2014.
- Gilbert, S. F., Sapp, J., and Tauber, A. I.: A symbiotic view of life: we have never been individuals, *Q. Rev. Biol.*, 87, 325–341, doi:10.1086/668166, 2012.
- Giovannoni, S. J., Britschgi, T. B., Moyer, C. L., and Field, K. G.: Genetic diversity in Sargasso Sea bacterioplankton, *Nature*, 345, 60–63, doi:10.1038/345060a0, 1990.
- Hannah, F., Rogerson, R., and laybourne-Parry, J.: Respiration rates and biovolumes of common benthic foraminifera (Protozoa), *J. Mar. Biol. Assoc. UK*, 74, 301–312, doi:10.1017/S0025315400039345, 1994.
- Healy-Williams, N., Ehrlich, R., and Williams, D. F.: Morphometric and stable isotopic evidence for subpopulations of *Globorotalia truncatulinoides*, *J. Foramin. Res.*, 15, 242–253, doi:10.2113/gsjfr.15.4.242, 1985.
- Hemleben, C., Spindler, M., and Anderson, O. R.: Modern planktonic foraminifera, Springer-Verlag, New York, 1989.
- Henderson, G. M.: New oceanic proxies for paleoclimate, *Earth Planet. Sc. Lett.*, 203, 1–13, doi:10.1016/S0012-821X(02)00809-9, 2002.
- Holligan, P. M. and Robertson, J. E.: Significance of ocean carbonate budgets for the global carbon cycle, *Glob. Change Biol.*, 2, 85–95, doi:10.1111/j.1365-2486.1996.tb00053.x, 1996.
- Holzmann, M. and Pawlowski, J.: Preservation of foraminifera for DNA extraction and PCR amplification, *J. Foramin. Res.*, 26, 264–267, doi:10.2113/gsjfr.26.3.264, 1996.
- Hönisch, B., Bijma, J., Russell, A. D. and Spero, H. J., Palmer, M. R., Zeebe, R. E., and Eisenhauer, A.: The influence of symbiont photosynthesis on the boron isotopic composition of foraminifera shells, *Mar. Micropaleontol.*, 49, 87–96, doi:10.1016/S0377-8398(03)00030-6, 2003.
- Huber, B. T., Bijma, J., and Darling, K. F.: Cryptic speciation in the living planktonic foraminifer *Globigerinella siphonifera* (d'Orbigny), *Paleobiology*, 23, 33–62, doi:10.1017/S0094837300016638, 1997.
- Hugenholtz, P., Pitulle, C., Hershberger, K. L., and Pace, N. R.: Novel division level bacterial diversity in a Yellowstone hot spring, *J. Bacteriol.*, 180, 366–376, 1998.
- Iglesias-Rodriguez, M. D., Armstrong, R., Feely, R., Hood, R., Kleypas, J., Milliman, J. D., Sabine, C., and Sarmiento, J.: Progress made in study of ocean's calcium carbonate budget, *Eos, Tran. Amer. Geophys. Un.*, 83, 365–375, doi:10.1029/2002eo000267, 2002.
- Jacox, M., Fiechter, J., Moore, A., and Edwards, C.: ENSO and the California Current coastal upwelling response, *J. Geophys. Res.-Oceans*, 120, 1691–1702, doi:10.1002/2014jc010650, 2015.
- Kahn, M. I. and Williams, D. F.: Oxygen and carbon isotopic composition of living planktonic foraminifera from the northeast Pacific Ocean, *Palaeogeogr. Palaeoclimatol.*, 33, 47–69, doi:10.1016/0031-0182(81)90032-8, 1981.
- Katz, M. E., Cramer, B. S., Franzese, A., Hönisch, B., Miller, K. G., Rosenthal, Y., and Wright, J. D.: Traditional and emerging geochemical proxies in foraminifera, *J. Foramin. Res.*, 40, 165–192, doi:10.2113/gsjfr.40.2.165, 2010.
- Kleijne, A., Kroon, D., and Zevenboom, W.: Phytoplankton and foraminiferal frequencies in northern Indian Ocean and Red Sea surface waters, *Neth. J. Sea Res.*, 24, 531–539, doi:10.1016/0077-7579(89)90131-2, 1989.
- Kozich, J. J., Westcott, S. L., Baxter, N. T., Highlander, S. K., and Schloss, P. D.: Development of a Dual-Index Sequencing Strategy and Curation Pipeline for Analyzing Amplicon Sequence Data on the MiSeq Illumina Sequencing Platform, *Appl.*

- Environ. Microb., 79, 5112–5120, doi:10.1128/AEM.01043-13, 2013.
- Kroon, D. and Darling, K. F.: Size and upwelling control of the stable isotope composition of *Neoglobobulimina dutertrei* (d'Orbigny), *Globigerinoides ruber* (d'Orbigny) and *Globigerina bulloides* d'Orbigny: examples from the Panama Basin and Arabian Sea, J. Foramin. Res., 25, 39–52, doi:10.2113/gsjfr.25.1.39, 1995.
- Kucera, M. and Darling, K. F.: Cryptic species of planktonic foraminifera: their effect on palaeoceanographic reconstructions, Philos. T. Roy. Soc. A, 360, 695–718, doi:10.1098/rsta.2001.0962, 2002.
- Kucera, M. and Kennett, J. P.: Causes and consequences of a middle Pleistocene origin of the modern planktonic foraminifer *Neoglobobulimina pachyderma* sinistral, Geology, 30, 539–542, doi:10.1130/0091-7613(2002)030<0539:CACOAM>2.0.CO;2, 2002.
- Kucera, M.: Planktonic Foraminifera as Tracers of Past Oceanic Environments, in: Developments in Marine Geology, edited by: Hillaire-Marcel, C. and De Vernal, A., Elsevier, 1, 213–262, doi:10.1016/S1572-5480(07)01011-1, 2007.
- Laurence, M., Hatzis, C., and Brash, D. E.: Common contaminants in next-generation sequencing that hinder discovery of low-abundance microbes, PLoS One, 9, e97876, doi:10.1371/journal.pone.0097876, 2014.
- Lee, J. J., McEnery, M., Pierce, S., Freudenthal, H. D., and Muller, W. A.: Tracer Experiments in Feeding Littoral Foraminifera, J. Eukaryot. Microbiol., 13, 659–670, doi:10.1111/j.1550-7408.1966.tb01978.x, 1966.
- Lombard, F., Erez, J., Michel, E., and Labeyrie, L.: Temperature effect on respiration and photosynthesis of the symbiont-bearing planktonic foraminifera *Globigerinoides ruber*, *Orbulina universa*, and *Globigerinella siphonifera*, Limnol. Oceanogr., 54, 210–218, doi:10.4319/lo.2009.54.1.0210, 2009.
- Lombard, F., Labeyrie, L., Michel, E., Bopp, L., Cortijo, E., Retailleau, S., Howa, H., and Jorissen, F.: Modelling planktonic foraminifer growth and distribution using an ecophysiological multi-species approach, Biogeosciences, 8, 853–873, doi:10.5194/bg-8-853-2011, 2011.
- Manno, C., Morato, N., and Bellerby, R.: Effect of ocean acidification and temperature increase on the planktonic foraminifer *Neoglobobulimina pachyderma* (sinistral), Polar Biol., 35, 1311–1319, doi:10.1007/s00300-012-1174-7, 2012.
- Martin, P., Dyhrman, S. T., Lomas, M. W., Poulton, N. J., and Van Mooy, B. A. S.: Accumulation and enhanced cycling of polyphosphate by Sargasso Sea plankton in response to low phosphorus, P. Natl. Acad. Sci. USA, 111, 8089–8094, doi:10.1073/pnas.1321719111, 2014.
- Mashiotta, T. A., Lea, D. W., and Spero, H. J.: Experimental determination of cadmium uptake in shells of the planktonic foraminifera *Orbulina universa* and *Globigerina bulloides*: Implications for surface water paleoreconstructions, Geochim. Cosmochim. Ac., 61, 4053–4065, doi:10.1016/S0016-7037(97)00206-8, 1997.
- Mitra, A., Flynn, K. J., Tillmann, U., Raven, J. A., Caron, D., Stoeker, D. K., Not, F., Hansen, P. J., Hallegraeff, G., Sanders, R., Wilken, S., MacManus, G., Johnson, M., Pitta, P., Våge, S., Berge, T., Calbet, A., Thingstad, F., Jin Jeong, H., Burkholder, J., Glibert, P. M., Granéli, E., and Lundgren, V.: Defining Planktonic Protist Functional Groups on Mechanisms for Energy and Nutrient Acquisition: Incorporation of Diverse Mixotrophic Strategies, Protist, 167, 106–120, doi:10.1016/j.protis.2016.01.003, 2016.
- Morard, R., Quillévéré, F., Escarguel, G., de Garidel-Thoron, T., de Vargas, C., and Kucera, M.: Ecological modeling of the temperature dependence of cryptic species of planktonic Foraminifera in the Southern Hemisphere, Palaeogeogr. Palaeoclimatol., 391, 13–33, doi:10.1016/j.palaeo.2013.05.011, 2013.
- Morris, R. M., Rappé, M. S., Connon, S. A., Vergin, K. L., Siebold, W. A., Carlson, C. A., and Giovannoni, S. J.: SAR11 clade dominates ocean surface bacterioplankton communities, Nature, 420, 806–810, doi:10.1038/nature01240, 2002.
- Mühling, M., Fuller, N. J., Millard, A., Somerfield, P. J., Marie, D., Wilson, W. H., Scanlan, D. J., Post, A. F., Joint, I., and Mann, N. H.: Genetic diversity of marine *Synechococcus* and co-occurring cyanophage communities: evidence for viral control of phytoplankton, Environ. Microbiol., 7, 499–508, doi:10.1111/j.1462-2920.2005.00713.x, 2005.
- Murray, J.: On the distribution of the pelagic foraminifera at the surface and on the floor of the ocean, Nat. Sci., 11, 17–24, 1897.
- Naidu, P. D. and Malmgren, B. A.: Relationship between late Quaternary upwelling history and coiling properties of *Neoglobobulimina pachyderma* and *Globigerina bulloides* in the Arabian Sea, J. Foramin. Res., 26, 64–70, doi:10.2113/gsjfr.26.1.64, 1996.
- Nowack, E. C. M. and Melkonian, M.: Endosymbiotic associations within protists, Philos. T. Roy. Soc. B, 365, 699–712, doi:10.1098/rstb.2009.0188, 2010.
- Nübel, U., Garcia-Pichel, F., and Muyzer, G.: PCR primers to amplify 16S rRNA genes from cyanobacteria, Appl. Environ. Microb., 63, 3327–332, 1997.
- Orsi, W., Charvet, S., Vd'achny, P., Bernhard, J. M., and Edgcomb, V. P.: Prevalence of partnerships between bacteria and ciliates in oxygen-depleted marine water columns, Front. Microbiol., 3, 341, doi:10.3389/fmicb.2012.00341, 2012.
- Paerl, R. W., Johnson, K. S., Welsh, R. M., Worden, A. Z., Chavez, F. P., and Zehr, J. P.: Differential Distributions of *Synechococcus* Subgroups Across the California Current System, Front. Microbiol., 2, 59–71, doi:10.3389/fmicb.2011.00059, 2011.
- Padua, R. A., Parrado, A., Larghero, J., and Chomienne, C.: UV and clean air result in contamination-free PCR, Leukemia, 13, 1898–1899, 1999.
- Pagaling, E., Strathdee, F., Spears, B. M., Cates, M. E., Allen, R. J., and Free, A.: Community history affects the predictability of microbial ecosystem development, ISME J., 8, 19–30, doi:10.1038/ismej.2013.150, 2014.
- Paoli, A., Celussi, M., Del Negro, P. Umani, S. F., and Talarico, L.: Ecological advantages from light adaptation and heterotrophic-like behavior in *Synechococcus* harvested from the Gulf of Trieste (Northern Adriatic Sea), FEMS Microbiol. Ecol., 64, 153–327, doi:10.1111/j.1574-6941.2008.00459.x, 2008.
- Parada, A., Needham, D., and Fuhrman, J.: Every base matters: assessing small subunit rRNA primers for marine microbiomes with mock communities, time series and global field samples, Environ. Microbiol., 18, 1403–1414, doi:10.1111/1462-2920.13023, 2016.
- Partensky, F., Blanchot, J., and Vaultot, D.: Differential distribution and ecology of *Prochlorococcus* and *Synechococcus* in

- oceanic waters: a review, Bulletin de l'Institut océanographique, available at: [http://horizon.documentation.ird.fr/exl-doc/pleins\\_textes/divers15-02/010019788.pdf](http://horizon.documentation.ird.fr/exl-doc/pleins_textes/divers15-02/010019788.pdf) (last access: 22 February 2017), 1999.
- Rappé, M. S. and Giovannoni, S. J.: The uncultured microbial majority, *Annu. Rev. Microbiol.*, 57, 369–394, doi:10.1146/annurev.micro.57.030502.090759, 2003.
- Richardson, T. L. and Jackson, G. A.: Small phytoplankton and carbon export from the surface ocean, *Science*, 315, 838–40, doi:10.1126/science.1133471, 2007.
- Ridgwell, A. and Zeebe, R. E.: The role of the global carbonate cycle in the regulation and evolution of the Earth system, *Earth Planet. Sc. Lett.*, 234, 299–315, doi:10.1016/j.epsl.2005.03.006, 2005.
- Rink, S., Kühl, M., Bijma, J., and Spero, H. J.: Microsensor studies of photosynthesis and respiration in the symbiotic foraminifer *Orbulina universa*, *Mar. Biol.*, 131, 583–595, doi:10.1007/S002270050350, 1998.
- Roy, T., Lombard, F., Bopp, L., and Gehlen, M.: Projected impacts of climate change and ocean acidification on the global biogeography of planktonic Foraminifera, *Biogeosciences*, 12, 2873–2889, doi:10.5194/bg-12-2873-2015, 2015.
- Russell, A. D., Hönisch, B., Spero, H. J., and Lea, D. W.: Effects of seawater carbonate ion concentration and temperature on shell U, Mg, and Sr in cultured planktonic foraminifera, *Geochim. Cosmochim. Ac.* 68, 4347–4361, doi:10.1016/j.gca.2004.03.013, 2004.
- Sadekov, A., Darling, K. F., Ishimura, T., Wade, C., Kimoto, K., Singh, A., Anand, P., Kroon, D., Jung, S., Ganssen, G., Ganeshram, R., Tsunogai, U., and Elderfield, H.: Geochemical imprints of genotypic variants of *Globigerina bulloides* in the Arabian Sea, *Paleoceanography*, 31, 1440–1452, doi:10.1002/2016pa002947, 2016.
- Salter, S. J., Cox, M. J., Turek, E. M., Calus, S. T., Cookson, W. O., Moffatt, M. F., Turner, P., Parkhill, J., Loman, N. J., and Walker, A. W.: Reagent and laboratory contamination can critically impact sequence-based microbiome analyses, *BMC Biol.*, 12, 87–99, doi:10.1186/S12915-014-0087-Z, 2014.
- Sarmiento, J. L. and Gruber, N. (Eds): *Ocean Biogeochemical Dynamics*. Princeton University Press, New Jersey, 2005.
- Sautter, L. R. and Thunell, R. C.: Planktonic foraminiferal response to upwelling and seasonal hydrographic conditions; sediment trap results from San Pedro Basin, Southern California Bight, *J. Foramin. Res.*, 21, 347–363, doi:10.2113/gsjfr.21.4.347, 1991.
- Scanlan, D. J., Ostrowski, M., Mazar, S., Dufresne, A., Garczarek, L., Hess, W. R., Post, A. F., Hagemann, M., Paulsen, I., and Partensky, F.: Ecological genomics of marine picocyanobacteria, *Microbiol. Mol. Biol. Rev.*, 73, 249–299, doi:10.1128/MMBR.00035-08, 2009.
- Schiebel, R.: Planktic foraminiferal sedimentation and the marine calcite budget, *Global Biogeochem. Cy.*, 16, 1–21, doi:10.1029/2001GB001459, 2002.
- Schiebel, R., Barker, S., Lendt, R., Thomas, H., and Bollmann, J.: Planktic foraminiferal dissolution in the twilight zone, *Deep-Sea. Res. Pt. II*, 54, 676–686, doi:10.1016/j.dsr2.2007.01.009, 2007.
- Schweikert, M. and Meyer, B.: Characterization of intracellular bacteria in the freshwater dinoflagellate *Peridinium cinctum*, *Protoplasma*, 217, 177–184, doi:10.1007/BF01283398, 2001.
- Seeers, H., Darling, K. F., and Wade, C. M.: Ecological partitioning and diversity in tropical planktonic foraminifera, *BMC Evol. Biol.*, 12, 54–69, doi:10.1186/1471-2148-12-54, 2012.
- Six, C., Thomas, J.-C., Garczarek, L., Ostowski, M., Dufresne, A., Blot, N., Scanlan, D. J., and Partensky, F.: Diversity and evolution of phycobilisomes in marine *Synechococcus* spp.: a comparative genomics study, *BMC Genomics*, 8, R259, doi:10.1186/gb-2007-8-12-r259, 2007.
- Spero, H. J., Lerche, I., and Williams, D. F.: Opening the carbon isotope “vital effect” black box, 2, Quantitative model for interpreting foraminiferal carbon isotope data, *Paleoceanography*, 6, 639–655, doi:10.1029/91PA02022, 1991.
- Spero, H. J. and Lea, D. W.: Experimental determination of stable isotope variability in *Globigerina bulloides*: implications for paleoceanographic reconstructions, *Mar. Micropaleontol.*, 28, 231–246, doi:10.1016/0377-8398(96)00003-5, 1996.
- Spero, H. J., Bijma, J., Lea, D. W., and Bemis, B. E.: Effect of seawater carbonate concentration on foraminiferal carbon and oxygen isotopes, *Nature*, 390, 497–500, doi:10.1038/37333, 1997.
- Spero, H. J., Mielke, K. M., Kalve, E. M., Lea, D. W., and Pak, D.: Multispecies approach to reconstructing eastern equatorial Pacific thermocline hydrography during the past 360 kyr, *Paleoceanography*, 18, 1022–1038, doi:10.1029/2002PA000814, 2003.
- Stewart, D. E. and Farmer, F. H.: Extraction, identification, and quantitation of phycobiliprotein pigments from phototrophic plankton, *Limnol. Oceanogr.*, 29, 392–397, doi:10.4319/lo.1984.29.2.0392, 1984.
- Suttle, C. A. and Chan, A. M.: Dynamics and distribution of cyanophages and their effect on marine *Synechococcus* spp., *Appl. Environ. Microbiol.*, 60, 3167–3174, 1994.
- Tai, V. and Palenik, B.: Temporal variation of *Synechococcus* clades at a coastal Pacific Ocean monitoring site, *ISME J.*, 3, 903–915, doi:10.1038/ismej.2009.35, 2009.
- Tai, V., Burton, R. S., and Palenik, B.: Temporal and spatial distributions of marine *Synechococcus* in the Southern California Bight assessed by hybridization to bead-arrays, *Mar. Ecol. Prog. Ser.*, 426, 133–147, doi:10.3354/meps09030, 2011.
- Tamura, K., Stecher, G., Peterson, D., Filipowski, A., and Kumar, S.: MEGA6: molecular evolutionary genetics analysis version 6.0, *Mol. Biol. Evol.*, 30, 2725–2729, doi:10.1093/molbev/mst197, 2013.
- Thunell, R. and Sautter, L. R.: Planktonic foraminiferal faunal and stable isotopic indices of upwelling: a sediment trap study in the San Pedro Basin, Southern California Bight, *Geol. Soc. Lond. Special Publ.*, 64, 77–91, doi:10.1144/GSL.SP.1992.064.01.05, 1992.
- Toledo, G. and Palenik, B.: *Synechococcus* diversity in the California current as seen by RNA polymerase (rpoC1) gene sequences of isolated strains, *Appl. Environ. Microbiol.*, 63, 4298–4303, 1997.
- Tsuchiya, M., Toyofuku, T., Uematsu, K., Brüchert, V., Collen, J., Yamamoto, H., and Kitazato, H.: Cytologic and Genetic Characteristics of Endobiotic Bacteria and Kleptoplasts of *Virgulina fragilis* (Foraminifera), *J. Eukaryot. Microbiol.*, 62, 454–469, doi:10.1111/jeu.12200, 2015.
- Uhle, M. E., Macko, S. A., Spero, H. J., Engel, M. H., and Lea, D. W.: Sources of carbon and nitrogen in modern planktonic foraminifera: the role of algal symbionts as determined by bulk

- and compound specific stable isotopic analyses, *Org. Geochem.*, 27, 103–113, doi:10.1016/S0146-6380(97)00075-2, 1997.
- Uhle, M. E., Macko, S. A., Spero, H. J., Lea, D. W., Ruddiman, W. F., and Engel, M. H.: The fate of nitrogen in the *Orbulina universa* foraminifera–symbiont system determined by nitrogen isotope analyses of shell-bound organic matter, *Limnol. Oceanogr.*, 44, 1968–1977, doi:10.4319/lo.1999.44.8.1968, 1999.
- van Hoek, A. H. A. M., van Alen, T. A., Sprakel, V. S. I., Leunissen, J. A. M., Brigge, T., Vogels, G. D., and Hackstein, J. H. P.: Multiple acquisition of methanogenic archaeal symbionts by anaerobic ciliates, *Mol. Biol. Evol.*, 17, 251–258, 2000.
- Walters, W., Hyde, E. R., Berg-Lyons, D., Ackermann, G., Humphrey, G., Parada, A., Gilbert, J. A., Jansson, J. K., Caporaso, J. G., Fuhrman, J. A., Apprill, A., and Knight, R.: Improved Bacterial 16S rRNA Gene (V4 and V4-5) and Fungal Internal Transcribed Spacer Marker Gene Primers for Microbial Community Surveys, *Systems*, 1, e00009, doi:10.1128/mSystems.00009-15, 2015.
- Waterbury, J. B., Watson, S. W., Guillard, R. R. L., and Brand, L. E.: Widespread occurrence of a unicellular, marine, planktonic, cyanobacterium, *Nature*, 277, 293–294, doi:10.1038/277293a0, 1979.
- Wernegreen, J. J.: Genome evolution in bacterial endosymbionts of insects, *Nat. Rev. Genet.*, 3, 850–861, doi:10.1038/nrg931, 2002.
- Wolf-Gladrow, D. A., Riebesell, U., Burkhardt, S., and Bijma, J.: Direct effects of CO<sub>2</sub> concentration on growth and isotopic composition of marine plankton, *Tellus B*, 51, 461–476, doi:10.1034/j.1600-0889.1999.00023.x, 1999.
- Wyman, M., Gregory, R. P. F., and Carr, N. G.: Novel role for phycoerythrin in a marine cyanobacterium, *Synechococcus* strain DC2, *Science*, 230, 818–820, doi:10.1126/science.230.4727.818, 1985.
- Wyman, M.: An *in vivo* method for the estimation of phycoerythrin concentrations in marine cyanobacteria (*Synechococcus* spp.), *Limnol. Oceanogr.*, 37, 1300–1306, doi:10.4319/lo.1992.37.6.1300, 1992.
- Yuasa, T., Horiguchi, T., Mayama, S., Matsuoka, A., and Takahashi, O.: Ultrastructural and molecular characterization of cyanobacterial symbionts in *Dictyocoryne profunda* (polycystine radiolaria), *Symbiosis*, 57, 51–55, doi:10.1007/s13199-012-0174-2, 2012.