

1 Accepted refereed manuscript of:
2
3 McCallum HM, Wilson J, Beaumont D, Sheldon R, O'Brien MG
4 & Park K (2016) A role for liming as a conservation
5 intervention? Earthworm abundance is associated with higher
6 soil pH and foraging activity of a threatened shorebird in
7 upland grasslands, *Agriculture, Ecosystems and Environment*,
8 223, pp. 182-189.
9
10
11 DOI: [10.1016/j.agee.2016.03.005](https://doi.org/10.1016/j.agee.2016.03.005)

12 © 2016, Elsevier. Licensed under the Creative Commons Attribution-
13 NonCommercial-NoDerivatives 4.0 International
14 <http://creativecommons.org/licenses/by-nc-nd/4.0/>
15

¹RSPB Centre for Conservation Science, RSPB Scotland, 2 Lochside View, Edinburgh
Park, Edinburgh, EH12 9DH, UK; ²RDS Conservation, c/o 78 Riverdene Road, Ilford, IG1
2EA. UK. ³BirdLife International Pacific Programme, GPO Box 1 8332, Suva, Fiji

16 **A role for liming as a conservation intervention? Earthworm abundance is**
17 **associated with higher soil pH and foraging activity of a threatened shorebird in**
18 **upland grasslands**

19 **Running title:** Conservation benefits of liming

20 Heather M McCallum^{a,1}, Jeremy D Wilson^{a,b}, David Beaumont^b, Rob Sheldon^{b,2}, Mark G
21 O'Brien^{b,3}, Kirsty J Park^a

22 ^aBiological and Environmental Sciences, University of Stirling, Stirling, ,FK9 4LA, UK.,^b
23 RSPB Centre for Conservation Science, RSPB Scotland, 2 Lochside View, Edinburgh
24 Park, Edinburgh, EH12 9DH, UK

25 heather.mccallum@rspb.org.uk, jeremy.wilson@rspb.org.uk,

26 dave.beaumont@rspb.org.uk, vanellus1970@yahoo.co.uk, mark.obrien@birdlife.org,

27 k.j.park@stir.ac.uk

28 **Corresponding author:** Kirsty Park, Biological and Environmental Sciences, University
29 of Stirling, Stirling. FK9 4LA. UK. Tel: +44 1786 467799. Email: k.j.park@stir.ac.uk

30

31 **Abstract**

32 The relationship between farmland bird populations and agricultural intensification has
33 been well studied. However, the impact of variation in soil conditions and soil
34 management is an exception, especially in upland (sub-alpine) farming systems. In this
35 study, we examined the relationships between liming history, soil pH and patterns of
36 foraging by Northern Lapwing, *Vanellus vanellus*, chicks in order to test the potential utility
37 of soil amendment as a conservation intervention for shorebirds nesting in agricultural
38 grasslands. Limed fields had higher soil pH than unlimed fields, and soil pH declined with
39 the number of years since a field was last limed. The most important predictor of total
40 earthworm abundance was soil organic matter with very few earthworms in peats of very
41 high organic matter content. However, there was a marked additive effect of soil pH with
42 earthworms more than twice as abundant at high (pH = 6.0) as at the low (pH = 3.5)
43 extremes of soil pH recorded in the study. Specifically, at Lapwing chick foraging
44 locations, the density of *Allolobophora chlorotica*, an acid-intolerant species of earthworm
45 found just below the surface of the soil, was significantly higher than at randomly selected
46 locations. These results suggest that liming helped to maintain breeding habitat quality for
47 Lapwings and other species dependent on earthworms. This is of conservation
48 significance in upland agricultural grasslands in the UK, where there has been a long-term
49 reduction in agricultural lime use since the mid-20th century. Field-scale trials of liming
50 would be valuable to test whether targetted amendment of soil pH in agriculturally
51 improved grasslands could retain an important role in conservation management for
52 shorebirds in upland landscapes where geology, high rainfall, and leaching tend to acidify
53 soils over time.

54 **Key words:** agriculture, grassland, lime, earthworm, lapwing, *Vanellus*, soil pH

55

56 **1 Introduction**

57 Agricultural intensification has been implicated in widespread declines in biodiversity, with
58 negative effects of agricultural change on birds in Europe particularly well documented
59 (Robinson & Sutherland, 2002, Newton, 2004, Wretenberg *et al.*, 2007, Wilson *et al.*,
60 2009). Intensification has resulted in a simplification of the farmed landscape associated
61 with reduced habitat heterogeneity and availability of nesting opportunities and food
62 sources for many farmland birds (Benton *et al.*, 2003, Tscharntke *et al.*, 2005).

63 One aspect of agricultural change which has received relatively little attention in relation to
64 farmland bird declines is soil management in upland (sub-alpine) grassland systems, and
65 especially the amendment of soil pH. This is surprising because soil invertebrates provide
66 important food resources for a wide range of farmland-feeding birds including shorebirds,
67 thrushes, starlings and corvids (Tucker, 1992, Wilson *et al.*, 2009), and the diversity and
68 abundance of many of these invertebrate groups are pH-sensitive (Edwards & Bohlen,
69 1996, Cole *et al.*, 2006).

70 Soil pH is reduced by agricultural processes such as cropping and the use of nitrogenous
71 fertilisers, but also naturally through leaching of calcium and other base cations from the
72 soil and has been further lowered in some areas by anthropogenic atmospheric acid
73 deposition (Rowell & Wild, 1985). Natural leaching of calcium is faster in areas with
74 higher rainfall, especially where acidic underlying geology and peat formation result in low
75 buffering capacity. These conditions describe agriculturally marginal, upland grasslands
76 over much of the UK. Such landscapes are now an internationally important stronghold
77 for populations of breeding shorebirds of several species (e.g. Eurasian Curlew,
78 *Numenius arquata*; Brown *et al.*, 2015). Yet even in these environments, they are
79 declining rapidly (Balmer *et al.*, 2013, Brown *et al.*, 2015) having already suffered

80 catastrophic declines in lowland agricultural systems (Wilson *et al.*, 2005, Lawicki *et al.*,
81 2011).

82 The effects of soil acidification are widely counteracted through agricultural liming to raise
83 soil pH (MAFF, 1969, Wilkinson, 1998, Spaey *et al.*, 2012). In the UK, agricultural lime
84 sales peaked in the 1950s and '60s under a Government subsidy which persisted into the
85 1970s (Figure 1), but have since declined steadily to pre-subsidy levels. Low soil pH and
86 declines in pH occurred between the 1970s and 2001, particularly in western and northern
87 areas that are dominated by livestock farms in higher altitude, higher rainfall environments
88 (Baxter *et al.*, 2006). By 2007, there was some evidence that this trend was being
89 reversed, perhaps due to the declining impacts of acid deposition from industrial pollution
90 (Emmett *et al.* 2010).

91 Earthworms comprise around 75% of soil fauna biomass in temperate grasslands
92 (Bardgett & Cook, 1998), play a key role in maintaining soil fertility and constitute a prey
93 resource for a number of birds that are associated with farmland, including shorebirds,
94 gulls and corvids (Barnard & Thompson 1985, Wilson *et al.*, 2009). Earthworms are
95 sensitive to soil pH and very few earthworms occur in soils below pH 4.3 (Edwards &
96 Bohlen, 1996). Because lime is applied as a surface dressing, it has a greater effect on
97 epigeic and endogeic (surface and near-surface dwelling) than anecic (burrowing)
98 earthworm species, with reported increases in earthworm abundance following liming
99 being mainly in epigeic species (Deleport & Tillier, 1999, Bishop, 2003, Potthoff *et al.*,
100 2008). Accordingly, Brandsma (2004) identified an increase in field use by both Northern
101 Lapwings *Vanellus vanellus* (henceforth 'Lapwings') and Black-tailed Godwits *Limosa*
102 *limosa* following increases in earthworm abundance that occurred after liming.

103 In this study we use upland agricultural grassland with a known liming history to test the
104 impact of lime use on prey resources and foraging habitat use by Lapwings, for whom

105 earthworms are an important component of the diet, including during chick development
 106 (Beintema *et al.*, 1991, Sheldon, 2002). Specifically we addressed the following questions:

107

108 1) How long does the positive effect of liming on soil pH last?

109 2) How is earthworm abundance related to soil pH, soil moisture and soil organic matter?

110 3) Do locations selected by foraging Lapwing chicks have a higher abundance of epigeic

111 or endogeic earthworms than randomly selected locations?

112

113 **2 Methods**

114 **2.1 Study area**

115 The study took place from 2009 – 2011 on upland grassland in central Scotland (56°
 116 4'40.06"N 4° 0'45.00"W), covering three livestock farms (Townhead, Muirpark and
 117 Lochend) and a total area of 685 ha. The underlying geology is basalt, overlain by glacial
 118 tills, and peat. The average annual precipitation within the area is 1020 mm. The three
 119 farms all produce beef cattle and sheep and range from 140 m to 340 m above sea level.
 120 Field types in marginal agricultural areas such as this are split into two types; 'in-bye'
 121 (enclosed fields used for either arable or sown grass production), and 'out-bye' (semi-
 122 natural grass and dwarf shrub 'moorland' vegetation cover used for rough grazing only
 123 (Gray 1996).

124 **2.2 Soil pH and earthworm sampling**

125 Soil properties and earthworm abundance were assessed in 19 fields which had
 126 undergone differing numbers of lime application within the preceding 10 years (Table 1).
 127 Around 50ha of the in-bye land at Townhead had been used to grow a brassica fodder
 128 crop in the preceding ten years (McCallum, 2012). This provided a contrast between

129 fields that had undergone fodder crop management and had received two or three lime
 130 applications (5 tonnes ha⁻¹ annum⁻¹, applied as a surface dressing of calcium carbonate
 131 dust) in the preceding 10 years, and fields that had not undergone this cropping
 132 management, and had received either no or just one lime application during this period.
 133 Because liming occurred at the time of fodder crop management and this was rotated
 134 round fields, the number of years since the last lime application varied between fields. In-
 135 by fields at the other two study farms had not experienced fodder crop management.
 136 Those at Muirpark had received no lime during the preceding 10 years, whereas fields at
 137 Lochend had received one or two lime applications. Out-by fields had received no lime
 138 within the preceding 10 years.

139 Soil cores (10cm depth x 10.5 cm diameter) were collected from nine random locations
 140 (generated using the sampling tool extension, Finnen & Menza, 2007, within ArcGIS 9.2)
 141 within each field between 19 April and 11 May, and were used to measure soil pH, soil
 142 organic matter and earthworm abundance. For fields with high variability in earthworm
 143 abundance between the samples, an additional five samples were collected. Two soil
 144 moisture measurements were taken in the field within 15cm of each soil core. In 2009 this
 145 was done with a theta probe (ML2, Delta-T Devices, Cambridge, England) and in 2010
 146 with a soil moisture metre (HH2 moisture metre, SM200 moisture sensor, Delta-T
 147 Devices, Cambridge, England).

148 Soil was air-dried for a minimum of two weeks then sieved to < 2 mm prior to carrying out
 149 soil analysis. Soil pH was measured using a digital pH meter (pH209, Hanna Instruments,
 150 Woonsocket, Rhode Island, USA), calibrated using buffers of pH 7 and pH 4. Soil pH was
 151 tested on 10 g of air dried, sieved soil, mixed with 25 ml distilled water, once the solution
 152 had been left to settle for a minimum of 10 minutes. Soil organic matter was calculated as
 153 the percentage of weight lost by burning sieved soil in a furnace at 425°C overnight (i.e

weight loss on ignition). The soil was prepared by drying at 105°C for a minimum of four hours and then weighed both before and after burning.

Earthworms were sampled using the same cores used to assess soil properties, with soil cores hand sorted in the laboratory within four days of collection (Edwards & Bohlen, 1996, Laidlaw, 2008). To avoid double counting of broken earthworms, only those with heads were counted. Earthworms were identified to species level (Sims & Gerard, 1985), with the exception of juveniles of either *Lumbricus* species or *Apporrectodea caliginosa* and *A. rosea*, which were assigned to one of these two groups based on colour, prostomium shape and spacing of chaetae.

2.3 Field observations of foraging Lapwing chicks

To test whether chick foraging location (hereafter termed chick location) was related to earthworm abundance, 19 lapwing chicks (10 in 2010, 9 in 2011) from separate broods were fitted with Pip3Ag376 backpack mounted radio-tags (Biotrack Ltd, Dorset, UK). All chicks within a brood were also ringed using British Trust for Ornithology metal rings, above the knee. Coloured insulating tape was used on the ring to provide each brood with a temporary unique colour marker. Radio-tagged chicks were re-captured at approximately weekly intervals in order that tags that were beginning to come loose could be re-glued.

Chick locations were estimated using triangulation by taking the bearing of the strongest signal from the chick's radio-tag (using a Sika receiver and three-element flexible Yagi antennae – Biotrack Ltd, Dorset, UK) from a minimum of three locations in succession (White & Garrot, 1990, Kenward, 2001). Estimated chick locations and the associated error ellipses (50% confidence) were calculated using Lenth's maximum likelihood estimator (White & Garrot, 1990), using Location of a Signal 4.0.3.7 (Ecological Software Solutions LLC, 2010). Error ellipses incorporated antenna error, which was established

179 from a number of test triangulations carried out at the study site (standard deviation 11.5).
 180 Chicks were located by triangulation every one to three days. In addition to triangulated
 181 locations (22 locations), some radio-tagged chicks were sighted using direction of the
 182 strongest signal to guide where to look for the chick (9 observations). Fields were also
 183 searched visually (with a telescope) for non radio-tagged chicks, using clues from adult
 184 behaviour to concentrate on areas in which chicks were likely to be located (8
 185 observations). Visual searches for chicks were carried out no more than once per day for
 186 each field. Where chick location was estimated by triangulation, chick foraging was not
 187 confirmed as it was not possible to see chicks. Lapwing chicks spend most of the time
 188 either foraging or being brooded (Beintema & Visser, 1989) so it was likely that chicks
 189 would be located in areas where they were foraging.

190 At each chick location four soil cores were collected, and four randomly located soil cores
 191 were also taken from the same field. Soil moisture and earthworm abundance were
 192 measured as described above.

193 **2.4 Data analysis**

194 *2.4.1. The relationship between soil properties and liming history*

195 To determine whether liming had the agriculturally desired impacts on soil pH, we tested
 196 the relationship between soil pH and whether or not a field had received lime in the
 197 preceding 10 years, using a linear mixed effects model (LMM). This model included data
 198 from 12 fields across the three farms, but excluded seven fields which had received either
 199 no or one lime application during the preceding 10 years, but could not be formally
 200 assigned as 'limed' or 'unlimed' in the preceding decade. An additional LMM was run
 201 using in-bye fields at Townhead only (n = 13), comparing those that had two or three lime
 202 applications (i.e. had been subjected to the fodder crop management regime) with those
 203 that had received one or none, as a binary fixed factor. In both models, the response

variable, pH, was measured at the soil core scale, with field identity included as a random (grouping) factor within the model, and year included as a fixed effect. The first model also included farm as a fixed effect. These models were also run using percentage soil organic matter as the response variable to test whether this differed between the treatment groups. Finally, a third LMM was implemented including only fields that had been limed two or three times within the preceding 10 years. This model tested whether soil pH was related to the number of years (covariate) since the last lime application, and was also implemented with soil core as the replicate ($n = 58$) and field ($n = 6$) fitted as a random effect.

2.4.2. *The relationship between soil properties and earthworm abundance*

GLMMs were used to test the relationship between earthworm abundance and soil properties. The response variable, total earthworm abundance (and, in separate models the abundance of the three most numerous species or groups of earthworms: *Aporrectodea rosea* / *caliginosa*, *Allolobophora chlorotica* and *Lumbricus* spp.), was measured on the soil core scale, with field identity included as a random factor. The explanatory variables were soil pH, soil organic matter and soil moisture, and their quadratic terms were also included because earthworms are not tolerant of extreme soil conditions (Edwards & Bohlen, 1996). Explanatory variables were checked for collinearity prior to analysis, and because no correlations exceeded 0.5, collinearity was not considered to compromise inference. Farm and year were also included as fixed effects. These models used data from all 19 fields assessed across the three farms.

2.4.3. *Differences between chick and random locations*

GLMMs were used to test whether earthworm abundance differed between chick foraging locations and random locations, whilst accounting for soil moisture. Mean earthworm abundance was calculated from the four soil cores collected at a chick location. However,

because the four random cores were collected from separate locations, data from these were not pooled. Total earthworm abundance and the abundance of *A. chlorotica* (the individual species with the biggest overall difference between foraging and random locations in the raw data) were each modelled as the response variable with location (chick foraging or random) and soil moisture as predictor variables. Sample identity (chick foraging and the four random locations) nested within chick identity was included as a random factor to account for non-independence of samples (i.e. each chick location is spatially associated with random locations within the same field) and repeated sampling involving the same chick. Because triangulation error meant that associated errors for chick locations were variable, the inverse of the area of the error ellipse was included as a case weight (Crawley, 2007) within the GLMMs, with weights calculated using the formula:

$$(1/\text{Area}_i) / \sum (1/\text{Area})$$

where Area_i is the area of the 50% confidence ellipse for the individual triangulated chick location, and $\sum (1/\text{Area})$ is the sum of $1/\text{Area}$ for all triangulated chick locations. Direct observations of chick locations and random locations were given a case weight of 1.

All statistical analyses were performed with R version 2.15.0 (R Development Core Team 2012). All LMMs and GLMMs were conducted using glmmPQL from the MASS package (Venables & Ripley, 2002). Covariates were standardised prior to analysis (Schielzeth, 2010).

Models where the response variable was a count were implemented with Poisson errors and log link and were corrected for over-dispersion. Models where the response variable was a percentage were implemented with binomial error structure and logit link. For all other models Gaussian error structure and identity link, were specified. Model residuals were checked graphically for normality and homogeneity of variance (Zuur *et al.*, 2007). Minimum adequate models were obtained using stepwise backwards selection, retaining

all variables that were significant at the 5% level and fixed factors that accounted for the study design. Model fit was assessed by calculating pseudo r^2 (from now on referred to as r^2), the square of the correlation between the predicted values and the observed data (Zuur *et al.*, 2009).

3. Results

3.1 The relationship between soil properties and liming history

Between individual samples, soil pH ranged from pH 3.5 to 6.0. On average pH was highest in fields at Lochend where fields had received 1 or 2 lime applications in the preceding 10 years, and lowest for out-bye fields at Townhead (and in-bye fields at Muirpark) where no liming had occurred within the preceding 10 years (Table 1). Soil organic matter ranged from 5 to 90%, on average being lowest in fields at Townhead that had been limed two or three times in the preceding 10 years and highest on fields at Muirpark Farm which had received no lime within the preceding 10 years.

Soil pH was significantly higher (by 0.8 pH units) in soil that had been limed than that which had not in the preceding 10 years (Table 2, Figure 2a). However, soil organic matter was significantly lower in limed soil compared to un-limed soil (Table 2, Figure 2b), indicating that differences in pH were the result of intrinsic differences in soil properties combined with differences in liming history. Soil pH was higher (0.3 pH units) in soil that had been limed two or three times within the preceding 10 years, in comparison to 0 or 1 times (Table 2, Figure 2c). Soil organic matter was not significantly different between these two groups (Table 2, Figure 2d), indicating that differences in soil pH on agriculturally improved 'in-bye' land were probably due to liming rather than difference in the nature of the soil. Soil pH declined by around 0.07 pH units with every year since liming ($t = -2.4$, $p = 0.022$, $n=58$; $r^2 = 0.50$; Figure 3).

278 **3.2 The relationship between soil properties and earthworm abundance**

279 Across the three farms and the two years of the study, 516 earthworms were collected of
 280 which 75% were *Apporectodea caliginosa* /*rosea*, 9% were *A. chlorotica*, and 8% were
 281 *Lumbricus* spp. (Appendix A).

282 There was weak evidence of an increase in total earthworm abundance with soil pH, and
 283 a decline at high levels of soil organic matter (i.e. in the context of this study, peat-rich
 284 soils), but there was no relationship with soil moisture (Table 3, Figure 4a & b). The
 285 model predicted earthworm density of close to 390 earthworms m⁻² (in the top 10 cm of
 286 soil) at pH 6.0, in comparison to just 190 earthworms m⁻² at pH 4.0. Differences with
 287 change in soil organic matter were even greater with close to 650 earthworms per m⁻²
 288 predicted at 10% soil organic matter, in comparison to just 25 earthworms per m⁻² in very
 289 peaty conditions at 90% soil organic matter ($r^2 = 0.31$).

290 *Apporectodea caliginosa* / *rosea* exhibited a weak quadratic relationship with soil pH and
 291 declined with increasing soil organic matter (Table 3, Figure 4c & d). Abundance peaked
 292 at around 250 earthworms m⁻² at pH 5.4, over 3 times as many as occurred at pH 4.0 (70
 293 earthworms m⁻²). Again the change with increasing soil organic matter was more
 294 substantial, with close to 540 earthworms m⁻² predicted at 10% organic matter in
 295 comparison to just 10 earthworms m⁻² at 80% organic matter ($r^2 = 0.27$).

296 *Allolobophora chlorotica* abundance also had a quadratic relationship with soil pH, but this
 297 relationship was stronger and abundance of this species was not correlated with soil
 298 organic matter, and weakly with soil moisture (Table 3, Figure 4e). Abundance peaked at
 299 around pH 5.2 at a predicted density of around 40 earthworms m⁻², and this species was
 300 not found below pH 4.5 ($r^2 = 0.39$).

301 *Lumbricus* spp. abundance was not related to soil pH or soil moisture but declined with
 302 increasing soil organic matter (Table 3, Figure 4f), although we note that the r^2 for this
 303 model was very low at 0.14.

304 **3.3 Differences between chick and random locations?**

305 A total of 263 earthworms was found across 39 chick foraging locations that occurred
 306 within 13 fields at the study site, with 189 in total at random locations. The most abundant
 307 earthworm species group across both chick and random locations was *A. caliginosa* / *A.*
 308 *rosea* (57% of total), with *A. chlorotica* accounting for 21%, and *Lumbricus* spp. 13%.
 309 Total earthworm abundance was not related to chick foraging location, but was higher
 310 when soil moisture was higher ($r^2 = 0.40$; Table 4). The abundance of *A. chlorotica* was
 311 significantly higher at chick foraging locations than random locations, with the model
 312 predicting over twice as many *A. chlorotica* at chick foraging compared to random
 313 locations (39 earthworms m^{-2} at chick foraging locations, compared to 15 earthworms m^{-2}
 314 at random locations; Figure 5). *Allolobophora chlorotica* was also significantly more
 315 abundant when soil moisture was higher ($r^2 = 0.27$).

316 **4. Discussion**

317 In the UK, agricultural lime use has declined by over 70% in the past 50 years. We found
 318 higher soil pH in fields that had received more lime applications in the preceding decade
 319 and a decline in soil pH with the number of years since a field had last been limed. This
 320 supports the hypothesis that a reduction in lime use may have contributed to declining soil
 321 pH in upland grassland areas. Total earthworm abundance was strongly related to soil
 322 organic matter with very few earthworms in soils with high organic content. In this
 323 environment, this means very peaty soils, where the high soil moisture, low soil pH and
 324 poor quality of organic matter combine to make conditions generally unsuitable for
 325 earthworms (Edwards & Bohlen, 1996). In addition, total earthworm abundance increased

326 with increasing soil pH and earthworm densities were very low in soils below pH 4.5 which
 327 accounted for almost 20% of our samples. *Allolobophora chlorotica* exhibited the
 328 strongest relationship with soil pH of the three earthworm groups tested and was the only
 329 one for which soil organic matter content was unimportant. This species of earthworm
 330 was over twice as abundant (after correcting for soil moisture) at Lapwing chick foraging
 331 locations than random locations. In this study, most liming was associated with
 332 establishment of a fodder crop which involved shallow cultivation. Given that cultivation is
 333 known to reduce earthworm densities (Curry *et al.*, 2002), this suggests that the beneficial
 334 impacts of liming were more than sufficient to outweigh any initial cultivation impact.
 335 Overall, our results suggest that the long-term reduction in lime use in upland grassland
 336 areas could have led to a decline in earthworm abundance, due to lower soil pH, therefore
 337 reducing foraging opportunities for Lapwing chicks and other shorebird species that occur
 338 within this habitat and are dependent upon earthworms as a key prey item.

339 Substantial declines in shorebirds in Europe are primarily due to poor breeding
 340 productivity, with reproductive success insufficient to replace losses due to adult mortality
 341 (Roodbergen *et al.*, 2012). Whilst predation is a key limiting factor, poor chick growth in
 342 sub-optimal habitats is likely to contribute to poorer chick survival in these environments
 343 (Kentie *et al.*, 2013). Lapwing chick condition is positively associated with the number of
 344 earthworm chaetae within their faeces, indicating the importance of this prey type in
 345 Lapwing chick development (Sheldon, 2002). The low densities of earthworms in soils
 346 with high organic matter and / or low soil pH within this study, suggest that these soil
 347 conditions may result in poor foraging opportunities for breeding shorebirds and thus limit
 348 the numbers and breeding success of these species in these areas. This is further
 349 supported by a Scotland-wide study which showed an additive effect of soil conditions on
 350 breeding Lapwing densities such that densities were highest when soil pH was relatively
 351 high and organic matter relatively low (McCallum *et al.*, 2015); in other words soils which
 352 we find here to support high earthworm densities.

353 *Allolobophora chlorotica* was only found in soils between pH 4.7 and 5.7, towards the
 354 upper end of soil pH in this study. This species is intolerant of acidic soil conditions
 355 (Satchell, 1955) and has previously been shown to respond positively to liming (Bishop,
 356 2003). Lapwing chick foraging location was associated with *A. chlorotica* density
 357 suggesting that this may be a favoured prey resource. *Allolobophora chlorotica* is
 358 generally found in the upper 5 cm of soil amongst the grass roots (Gerard, 1967), which is
 359 also where Lapwing chicks find food resources (Benteima *et al.*, 1991). *Apporectodea*
 360 *caliginosa* and *rosea*, the most abundant species group within this study may be lower in
 361 the soil profile (within the top 10 cm; Gerard, 1967) and consequently may not be as
 362 accessible to Lapwing chicks. Soil conditions suitable for *A. chlorotica* occurred more
 363 frequently in fields that had undergone liming at least once within the past 10 years
 364 indicating that liming could increase this species abundance and therefore prey resources
 365 for breeding Lapwings.

366 4.1 Conclusions

367 Our results highlight the importance of lime use in maintaining soil pH in upland grassland
 368 areas. Declining soil pH associated with a reduction in lime use on agricultural grasslands
 369 is likely to have led to declines in earthworm abundance and reduced foraging habitat
 370 quality for birds reliant on earthworms as prey, especially where underlying geology has
 371 poor buffering capacity and rainfall levels are high enough to reduce soil pH through
 372 leaching. We found that Lapwing chick foraging location was associated with higher
 373 densities of one particular earthworm species, *A. chlorotica*, which only occurred within a
 374 narrow range of soil pH, and further work to identify if this earthworm species contributes
 375 more substantially to Lapwing chick diet than others would be valuable.

376 We suggest that field scale trials of lime use within upland grassland agricultural areas
 377 would be useful to test whether liming could be used as a conservation measure for

378 farmland birds where earthworms constitute a major component of their diet. Application
 379 of agricultural lime does lead to some carbon dioxide emissions from soil, although these
 380 emissions may be lower than assumed by modelling studies (West & McBride, 2005, Biasi
 381 *et al.*, 2008) and this, along with quarrying and transport of lime, mean that use of
 382 agricultural liming as a bird conservation intervention in upland areas would need to be
 383 carefully targeted. This would entail a focus on existing sown and agricultural improved
 384 grasslands of low biodiversity interest that are topographically suited to settlement by
 385 breeding shorebirds (McCallum *et al.*, 2015), and where soil pH has fallen below that
 386 recommended for agricultural grass production.

387

388 **Acknowledgements**

389 We thank Alistair Robb of Townhead Farm, Andrew Morton of Lochend Farm and William
 390 Owen of Muirpark Farm for allowing access to their farms and providing information on
 391 lime use. We thank Jen Smart, Claire Smith and Rob Campbell for training in radio-
 392 tracking and ringing and Malcolm Ausden for training in earthworm identification. This
 393 work was carried out under SNH (9797) and BTO licences (C/5642). We also
 394 acknowledge support for soil laboratory work by Helen Ewan. Thank you to Gail
 395 Robertson and Madeleine Murtagh for invaluable assistance with sample collection and
 396 sorting. This work was funded by the University of Stirling and RSPB.

397 **References**

- 398 Agricultural Lime Producers' Council 1977. Lime in Agriculture. Agricultural Lime
 399 Producers Council, London.
- 400 Balmer, D.E., Gillings, S., Caffrey, B.J., Swann, R.L., Downie, I.S., Fuller, R.J. 2013. Bird
 401 Atlas 2007-11: the breeding and wintering birds of Britain and Ireland. BTO Books,
 402 Thetford, UK.

- 403 Bardgett, R.D., Cook, R. 1998. Functional aspects of soil animal diversity in agricultural
404 grasslands. *Appl. Soil Ecol.* 10, 263-276.
- 405 Barnard, C.J., Thompson, D.B.A. 1985. *Gulls and Plovers. The Ecology and Behaviour*
406 *of Mixed-Species Feeding Groups.* Croom Helm. Beckenham, UK.
- 407 Baxter, S.J., Oliver, M.A., Archer, J.R. 2006. The Representative Soil Sampling Scheme
408 of England and Wales: the spatial variation of topsoil nutrient status and pH between 1971
409 and 2001. *Soil Use Manage.* 22, 383-392.
- 410 Beintema, A.J., Visser, G.H. 1989. The effect of weather on time budgets and
411 development of chicks of meadow birds. *Ardea* 77, 181 – 192.
- 412 Beintema, A.J., Thissen, J.B., Tensen, D., Visser, G.H. 1991. Feeding ecology of
413 charadriiform chicks in agricultural grassland. *Ardea* 79, 31-44.
- 414 Benton, T., Vickery, J.A., Wilson, J.D. 2003. Farmland biodiversity: is habitat
415 heterogeneity the key? *Trends Ecol. Evol.* 18, 182 – 188.
- 416 Biasi, C., Lind, S.E., Pekkarinen, N.M., Huttunen, J.T., Shurpali, N.J., Hyvonen, N.P.,
417 Repo, M.E., Martikainen, P.J. 2008. Direct experimental evidence for the contribution of
418 lime to CO₂ release from managed peat soil. *Soil Biol. Biochem.* 40, 2660-2669.
- 419 Bide, T., Brown, T.J., Hobbs, S.F., Idoine, N. 2015. *United Kingdom Minerals Yearbook*
420 *2014*, British Geological Survey, Keyworth, Nottingham, UK.
- 421 Bishop, H. O. 2003. The ecology of earthworms and their impact on carbon distribution
422 and chemical characteristics in soil. Unpublished Ph.D. thesis, School of Biological and
423 Environmental Sciences, University of Stirling, UK.

- 424 Brandsma, O. 2004. The importance of fertilisation for the food supply of grassland birds.
425 Wader Study Group Bull. 103, 17-18.
- 426 Brown, D., Wilson, J., Douglas, D., Thompson, P., Foster, S., McCulloch, N., Phillips, J.,
427 Stroud, D., Whitehead, S., Crockford, N., Sheldon, R. 2015. The Eurasian Curlew – the
428 most pressing bird conservation priority in the UK? British Birds 108, 660-668.
- 429 Crawley, M.J. 2007. The R Book. John Wiley and Sons, Chichester, UK.
- 430 Cole, L., Bradford, M.A., Shaw, P.J.A., Bardgett, R.D. 2006. The abundance, richness and
431 functional role of soil meso and macrofauna in temperate grassland – A case study. Appl.
432 Soil Ecol. 33, 186-198.
- 433 Curry, J.P., Byrne, D., Schmidt, O. 2002. Intensive cultivation can drastically reduce
434 earthworm populations in arable land. Eur. J. Soil Biol. 38, 127-130.
- 435 Deleporte, S., Tillier, P. 1999. Long-term effects of mineral amendments on soil fauna and
436 humus in an acid beach forest floor. Forest Ecol. Manage. 118, 245-252.
- 437 Ecological Software Solutions LLC (2010) Location of a Signal 4.0.3.7. Hegymagas,
438 Hungary. <http://www.ecostats.com/software/loas/loas.htm>, accessed May 2010.
- 439 Edwards, C.A., Bohlen, P.J. 1996. Biology and Ecology of Earthworms 3rd Edition.
440 Chapman and Hall, London, UK.
- 441 Emmett, B.A., Reynolds, B., Chamberlain, P.M., Rowe, E., Spurgeon, D., Brittain, S.A.,
442 Frogbrook, Z., Hughes, S., Lawler, A.J., Poskitt, J., Potter, E., Robinson, D.A., Scott, A.,
443 Wood, C., Woods, C. 2010. Countryside Survey: Soils Report from 2007. CS Technical
444 Report No. 9/07, Centre for Ecology and Hydrology, Wallingford, UK.

- 445 Finnen, E. & Menza, C. 2007. NOAA's CCMA Biogeography Team's Sampling Tool: A
 446 GIS application for ArcGIS. NOAA, Silver Spring, USA.
 447 <http://arcscripts.esri.com/details.asp?dbid=15080> accessed: February 2009.
- 448 Gerard, B.M. 1967. Factors affecting earthworms in pastures. *J. Anim. Ecol.* 36, 235-252.
- 449 Gray, J. 1996. Cultivating farm life on the Borders: Scottish hill sheep farms and the
 450 European Community. *Sociol. Ruralis* 1, 27-50.
- 451 Hillier, J.A., Chapman, G.R., Highley, D.E., Gatliff, R.W., Colman, T.B., White, R., Linley,
 452 K.A. 2003. United Kingdom Minerals Yearbook 2002, British Geological Survey, Keyworth,
 453 Nottingham, UK.
- 454 Kentie, R., Hooijmeijer, J.C.E.W., Trimbos, K.B., Groen, N.M, Piersma, T. 2013.
 455 Intensified agricultural use of grasslands reduces growth and survival of precocial
 456 shorebird chicks. *J. Appl. Ecol.* 50, 243-251.
- 457 Kenward, R.E. 2001. *A Manual for Wildlife Radio Tagging*. Academic Press, London, UK.
- 458 Laidlaw, R.A. 2008. Methods for the rapid assessment of earthworm populations and
 459 biomass as wader prey in lowland wet grassland. Unpublished Ph.D. Thesis, University of
 460 East Anglia, UK.
- 461 Lawicki, L. Wylegala, P., Batycki, A., Kajner, Z., Guentzel, S., Jasinski, M., Kruszyk, S.,
 462 Rubacha, S., Zmihorski, M. 2011. Long-term decline of grassland waders in western
 463 Poland. *Vogelwelt* 132, 101-108.
- 464 MAFF 1969. *Lime and Liming* 6th Edition, Bulletin 35, MAFF, London.

- 465 McCallum, H.M. 2012. Ecology and conservation of breeding lapwings in upland
466 grassland systems: effects of agricultural management and soil properties. Unpublished
467 Ph.D. thesis, University of Stirling, UK.
- 468 McCallum, H.M., Park, K.J., O'Brien, M.G., Gimona, A., Poggio, L., Wilson, J.D. 2015. Soil
469 pH and organic matter content add explanatory power to Northern Lapwing *Vanellus*
470 *vanellus* distribution models and suggest soil amendment as a conservation measure on
471 upland farmland. Ibis 157, 677-687.
- 472 Newton, I. 2004. The recent declines of farmland bird populations in Britain: an appraisal
473 of causal factors and conservation actions. Ibis 146, 579-600.
- 474 Potthoff, M., Asche, N., Stein, B., Muhs, A., Beese, F. 2008. Earthworm communities in
475 temperate beech wood forest soils affected by liming. Eur. J. Soil Sci. 44, 247-254.
- 476 R Development Core Team 2012. R: A language and environment for statistical
477 computing. R foundation for statistical computing, Vienna, Austria. ISBN 3-900051-07-0,
478 <http://www.R-project.org/>.
- 479 Robinson, R.A., Sutherland, W.J. 2002. Post-war changes in arable farming and
480 biodiversity in Great Britain. J. Appl. Ecol. 39, 157-176.
- 481 Roodbergen, M., van der Werf, B., Hotker, H. 2012. Revealing the contributions of
482 reproduction and survival to the Europe-wide decline in meadow birds: review and meta-
483 analysis. J. Ornithol. 153, 53-74.
- 484 Rowell, D.I., Wild, A. 1985. Causes of acidification: a summary. Soil Use Manage. 1, 32-
485 33.

- 486 Satchell, J.E. 1955. Some aspects of earthworm ecology. In Kevan, D.K (Ed) Soil
487 Zoology. Butterworths Publications Ltd, London, UK, pp 180-201.
- 488 Schielzeth, H. 2010. Simple means to improve the interpretability of regression
489 coefficients. *Methods Ecol. Evol.* 1, 103-113.
- 490 Sheldon, R.D. 2002. Factors affecting the distribution, abundance and chick survival of the
491 Lapwing (*Vanellus vanellus*). Unpublished Ph.D. thesis. Harper Adams University College,
492 UK.
- 493 Sims, R.W., Gerard B.M. 1985. Earthworms, Synopses of the British Fauna No 31. Brill,
494 Leiden, The Netherlands.
- 495 Spaey, D., Traon, D., Joas, R. 2012. Study on options to fully harmonise the EU legislation
496 on fertilising materials including technical feasibility, environmental, economic and social
497 impacts. Annexes to the Final Report. European Commission Directorate-General for
498 Enterprise and Industry, contract no. 30-CE-0392420/00-18. Available at
499 [http://ec.europa.eu/enterprise/sectors/chemicals/files/fertilizers/annexes_16jan2012_en.p](http://ec.europa.eu/enterprise/sectors/chemicals/files/fertilizers/annexes_16jan2012_en.pdf)
500 [df](http://ec.europa.eu/enterprise/sectors/chemicals/files/fertilizers/annexes_16jan2012_en.pdf), accessed 29 August 2015.
- 501 Tschardtke, T., Klieng, M., Kreuss, A., Steffan-Dewenter, I. Thies, C. 2005. Landscape
502 perspectives on agricultural intensification and biodiversity – ecosystem service
503 management. *Ecol. Lett.* 8, 857-874.
- 504 Tucker, G.M. 1992. Effects of agricultural practices on field use by invertebrate-feeding
505 birds in winter. *J. Appl. Ecol.* 29, 779-790.
- 506 Venables, W.N., Ripley, B.D. 2002. *Modern Applied Statistics with S*. 4th Edition, Springer,
507 New York.

- 508 West, T.O., McBride, A.C. 2005. The contribution of agricultural lime to carbon dioxide
509 emissions in the United States: dissolution, transport and net emissions. *Agric. Ecosys.*
510 *Environ.* 108, 145-154.
- 511 White G.C., Garrott, G.C. 1990. *Analysis of Wildlife Radio-tracking Data.* Academic
512 Press, London, UK.
- 513 Wilkinson, M. 1998. *Changes in Farming Practice 1978 to 1990.* ADAS Contract Report
514 to ITE. ADAS Huntingdon, UK.
- 515 Wilson, A.M., Vickery, J.A., Brown, A., Langston, H.W., Smallshire, D., Wotton, S.,
516 Vanhinsbergh, D. 2005. Changes in the numbers of breeding waders on lowland wet
517 grasslands in England and Wales between 1982 and 2002. *Bird Study* 52, 55-69.
- 518 Wilson, J.D., Evans A.D., Grice, P.V. 2009. *Bird Conservation and Agriculture.*
519 Cambridge University Press, Cambridge, UK.
- 520 Wretenberg, J., Lindstrom, A., Svensson, S., Part, T. 2007. Linking agricultural policies to
521 population trends of Swedish farmland birds in different agricultural regions. *J. Appl. Ecol.*
522 44, 933-941.
- 523 Zuur A.F., Ieno E.N., Smith G.H. 2007. *Analysing ecological data.* Springer Science+
524 Business Media, New York.
- 525 Zuur A.F., Ieno E.N., Walker, N.J., Smith G.H. (2009) *Mixed Models and Extensions in*
526 *Ecology with R.* Springer Science+ Business Media, New York.

527 Tables

528 Table 1 Mean \pm standard error of field soil pH (raw data) for each farm showing fields
529 grouped by history of liming.

Farm	Field Type	Lime applications in preceding 10 years	No. of fields	Mean soil pH	Mean soil organic matter (%)
Townhead	In-bye	2 or 3	6	5.1 \pm 0.10	21 \pm 3
Townhead	In-bye	0 or 1	7	5.0 \pm 0.10	30 \pm 2
Townhead	Out-bye	0	2	4.5 \pm 0.33	33 \pm 3
Muirpark	In-bye	0	2	4.6 \pm 0.003	37 \pm 1
Lochend	In-bye	1 or 2	2	5.3 \pm 0.16	26 \pm 5

530

531 Table 2 Statistical summary for LMMs testing the relationship between liming history and
532 soil pH for Lime Model 1 (comparison of limed fields v non-limed fields) and Lime Model 2
533 (comparison of fields receiving 2/3 lime applications within the past 10 years to those that
534 received 0/1). The same models were repeated using soil organic matter as the response
535 variable to test whether this differed between the two pairs of treatment groups, and the
536 statistical summaries are also presented here. The sample size for Lime Model 1 was
537 138 across 12 fields, and for Lime Model 2 was 115 across 13 fields.

	Soil pH			Soil Organic Matter		
	DF	F	p-value	DF	F	p-value
Lime Model 1						
Lime	1	50.2	0.0001	1	9.6	0.015
Year	1	32.2	<0.0001	1	2.05	0.15
Farm	2	1.1	0.39	2	1.76	0.23
Lime Model 2						
Lime	1	10.5	0.008	1	2.29	0.16
Year	1	35.9	<0.0001	1	3.38	0.07

538

539

540

Table 3 Statistical summary for GLMMs testing the relationship between (i) total earthworm, (ii) *Apporectodea caliginosa / rosea*, (iii) *Allolobophora chlorotica* and (iv) *Lumbricus* spp. abundance and soil properties, showing the minimum adequate model. Sample size was 190 soil cores across 19 fields.

	DF	Parameter estimate \pm SE	Statistic	p-value
Total earthworm				
Soil pH	1	0.21 \pm 0.11	t = 2.0	0.051
Soil organic matter	1	-0.55 \pm 0.12	t = -4.5	<0.0001
Farm	2	-	F = 0.18	0.83
Year	1	-	F = 1.8	0.18
<i>Apporectodea caliginosa / rosea</i>				
Soil pH	1	0.29 \pm 0.12	t = 2.38	0.018
Soil pH ²	1	-1.17 \pm 0.08	t = -1.88	0.061
Soil organic matter	1	-0.67 \pm 0.13	t = -5.12	<0.0001
Farm	2	-	F = 1.08	0.36
Year	1	-	F = 2.09	0.15
<i>Allolobophora chlorotica</i>				
Soil pH	1	1.33 \pm 0.39	t = 3.44	0.0007
Soil pH ²	1	-1.77 \pm 0.43	t = -4.16	0.0001
Soil moisture	1	0.47 \pm 0.24	t = 1.94	0.054
Farm	2	-	F = 0	1
Year	1	-	F = 0.25	0.61
<i>Lumbricus</i> spp.				
Soil organic matter	1	-0.65 \pm 0.25	t = -2.63	0.0093
Farm	2	-	F = 0.17	0.84
Year	1	-	F = 0.26	0.61

549 Table 4 Statistical summary for GLMMs testing whether earthworm abundance (total and
 550 *A. chlorotica*) differed with foraging location (chick compared to random location) and soil
 551 moisture; minimum adequate models are presented. The sample size was 195 soil cores,
 552 accounted for by 39 sample groups (including 1 chick location with 4 cores and 4 random
 553 locations with 1 core), for 22 chicks.

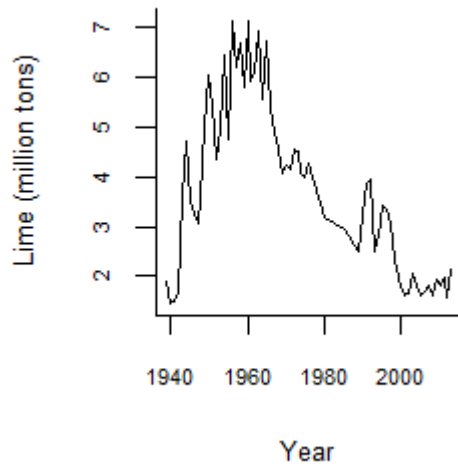
	DF	Parameter estimate \pm SE	t	p-value
Total earthworm				
Soil moisture	1	0.26 \pm 0.11	2.31	0.0223
<i>Allolobophora chlorotica</i>				
Foraging location (CvR)	1	0.89 \pm 0.30	3.01	0.0031
Soil moisture	1	0.62 \pm 0.19	3.33	0.0011

554

555

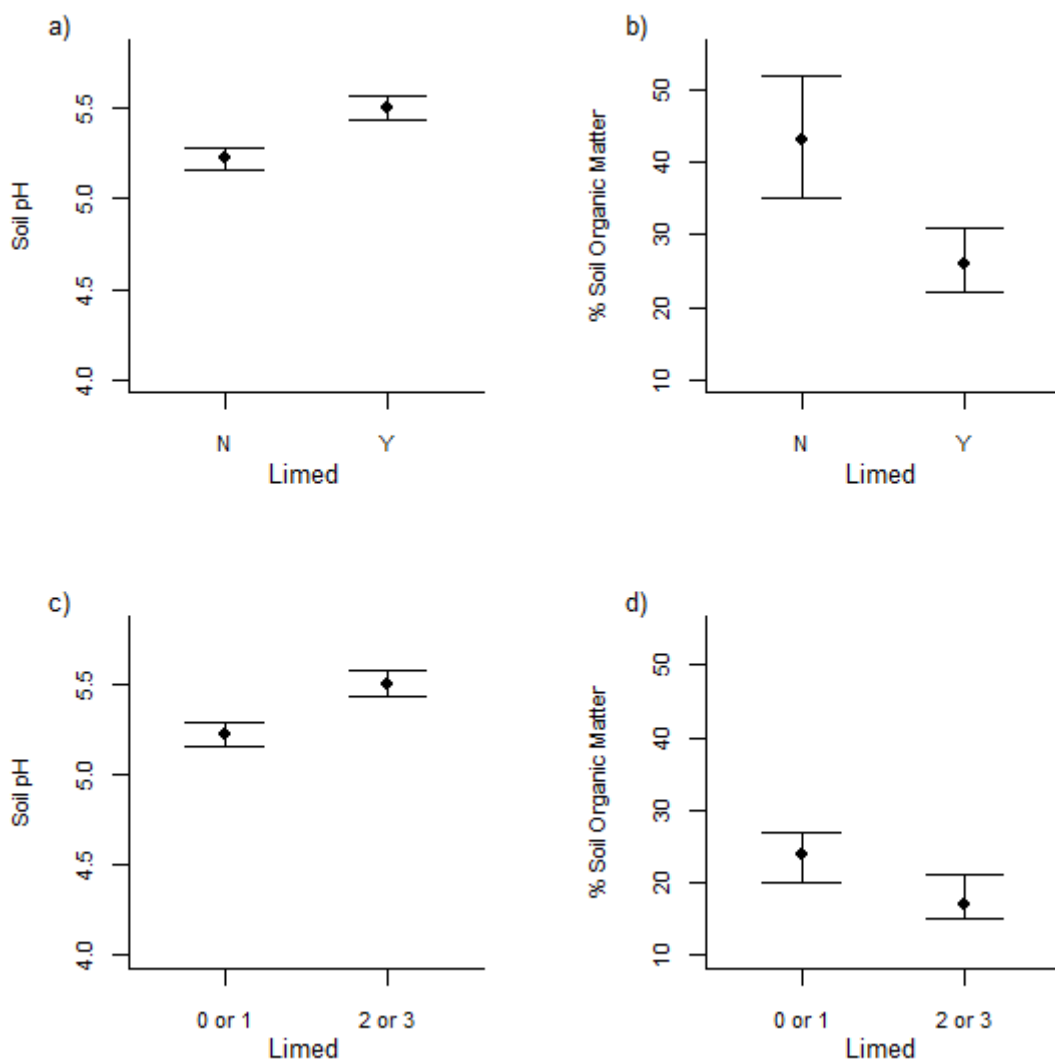
556

557 Figures



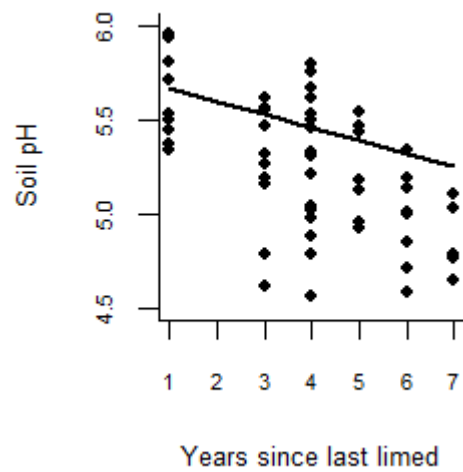
558

559 Figure 1 The quantity of lime sold in Great Britain for agricultural purposes, annually since
 560 1939: data sources: 1939 – 1976, Agricultural Lime Producers Council (1977), 1980 –
 561 1989, Wilkinson (1998), 1990 – 2000, Hillier *et al.* (2003), 2001 – 2013, Bide *et al.* (2015).



562

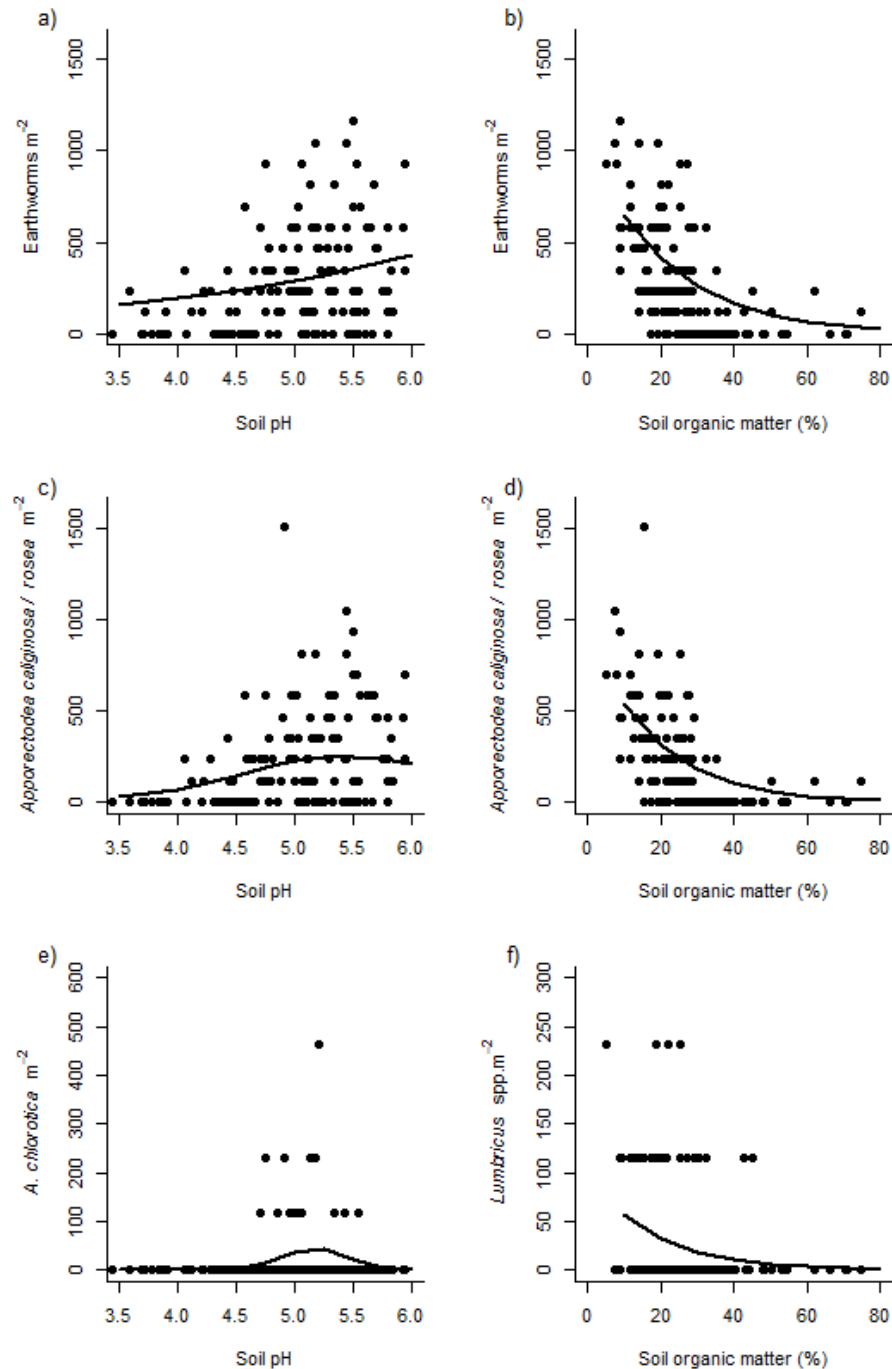
563 Figure 2a) Modelled values of soil pH \pm standard errors in fields (n=12) which had been
 564 limed compared to those that had not, within the preceding 10 years, b) Modelled values
 565 of percentage soil organic matter \pm standard errors in fields (n=12) which had been limed
 566 compared to those that had not, within the preceding 10 years, c) Modelled values of soil
 567 pH \pm standard errors in fields (n=13; Townhead only) which had undergone 2 or 3 lime
 568 applications in the preceding 10 years, compared to those that had undergone 0 or 1, d)
 569 Modelled values of percentage soil organic matter \pm standard errors in fields (n=13;
 570 Townhead only) which had undergone 2 or 3 lime applications in the preceding 10 years,
 571 compared to those that had undergone 0 or 1.



572

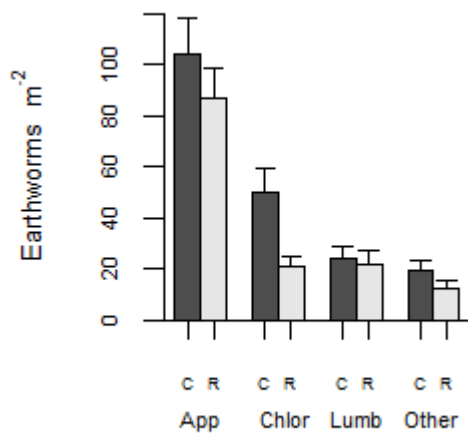
573 Figure 3 Modelled decline in soil pH with number of years since last lime application
 574 compared to the raw data of soil pH (solid circles) verses number of years since last
 575 limed. Each point represents one soil core (n = 58 from six fields).

576



577

578 Figure 4 The relationship between a) total earthworm abundance and soil pH, b) total
 579 earthworm abundance and soil organic matter, c) *Apporectodea caliginosa / rosea*
 580 abundance and soil pH d) *Apporectodea caliginosa / rosea* abundance and soil organic
 581 matter, e) *Allolobophora chlorotica* and soil pH and f) *Lumbricus* spp. And soil organic
 582 matter, showing the predicted earthworm abundance with varying soil pH or organic
 583 matter generated from GLMMs, with raw data represented by closed circles. Each point
 584 represents the number of worms in a single core multiplied up to per m^2 value to enable
 585 direct comparisons to other studies.



586

587 Figure 5 Mean earthworm density, and standard error, at chick (C) compared to random
 588 (R) locations, showing the 3 main species groups *Apporectodea caliginosa / rosea* (App),
 589 *Allolobophora chlorotica* (Chlor), *Lumbricus* spp. (Lumb), and all other species (other).
 590 Densities to a depth of 10 cm.