

# Seasonal development and pathological changes associated with the parasitic nematode *Philometroides sanguineus* in wild crucian carp *Carassius carassius* (L.) in England

C.F. Williams<sup>1\*</sup>, F. Moravec<sup>2</sup>, J.F. Turnbull<sup>3</sup> and H.W. Ferguson<sup>4</sup>

<sup>1</sup>Environment Agency, Bromholme Lane, Brampton, Cambridgeshire PE28 4NE, England, UK: <sup>2</sup>Institute of Parasitology, Biology Centre of the Academy of Sciences of the Czech Republic, České Budějovice, Czech Republic: <sup>3</sup>Institute of Aquaculture, University of Stirling, Stirling FK9 4LA, Scotland, UK: <sup>4</sup>Marine Medicine Programme, School of Veterinary Medicine, St George's University, Grenada, West Indies

(Received 11 January 2011; Accepted 13 June 2011; First Published Online 5 August 2011)

## Abstract

Pathological changes associated with the parasitic nematode *Philometroides sanguineus* (Rudolphi, 1819) are described for the first time from observations of infections in wild crucian carp *Carassius carassius* (L.) in England. The damage caused by *P. sanguineus* was influenced strongly by host size, parasite development and the seasonal migrations of female nematodes within host tissues. Male and unfertilized female nematodes located on the swim-bladder wall caused only minor, localized changes. In contrast, the migration of gravid female nematodes into the fins during autumn provoked an acute inflammatory response comprising neutrophils, eosinophils and lymphocytes. This was accompanied by fin distortion, swelling of the dorsal and caudal tissues, degenerative changes and localized oedema. The encapsulation of female nematodes in connective tissue throughout winter limited additional tissue damage. The emergence of gravid nematodes from the fins in spring to facilitate larval dispersal caused necrosis, hyperplasia and loss of skin integrity. This activity was again accompanied by acute inflammatory reactions. Pathological changes were more severe in crucian carp measuring less than 60 mm in length, with no signs of debilitation in larger fish. These observations suggest that any impact of *P. sanguineus* is strictly seasonal and may be limited to fry. Lesions caused by this parasite, only recently recorded in Britain, may represent an additional pressure upon wild crucian carp populations already threatened by hybridization, competition and habitat loss.

## Introduction

The crucian carp *Carassius carassius* (L.) is a freshwater cyprinid fish, native to the British Isles (Wheeler, 1977, 2000). Despite widespread movements of this fish to support angling and the tolerance of the species to varied

---

\*Fax: + 44 (0)1480 433873  
E-mail: chris.williams@environment-agency.gov.uk

environmental conditions (Davies *et al.*, 2004), crucian carp remain discretely distributed in England (Wheeler, 1977, 2000). In recent years, concern has grown due to a perceived decline in the number of wild crucian carp populations (Bolton *et al.*, 1998; Wheeler, 2000; Häenfling *et al.*, 2005). According to Tarkan *et al.* (2009) the crucian carp is becoming an increasingly threatened freshwater fish species in England and Wales. Reasons for this apparent decline include hybridization, competition and loss of preferred habitat (Bolton *et al.*, 1998; Häenfling *et al.*, 2005). This has emphasized the need to protect crucian carp populations and limit further pressures upon this vulnerable species (Wheeler, 2000; Häenfling *et al.*, 2005; Copp *et al.*, 2008).

*Philometroides sanguineus* (Rudolphi, 1819) is a parasitic nematode that infects fish of the genus *Carassius*. The life cycle of this parasite is seasonal and involves a free-living copepod intermediate host (Yashchuk, 1971, 1974). Fish become infected by ingesting such copepods. *Philometroides sanguineus* is believed to be a non-native species to Britain and was first recorded in England in 1982 following parasitological examinations of crucian carp from a farm pond in Essex (J. Moore & J. Chubb, pers. comm.). Infected crucian carp have since been recorded from a fish farm in southern England and eight stillwater fisheries (Environment Agency, unpublished). The literature suggests that nematodes of the genus *Philometroides*, including *P. sanguineus*, can be pathogenic, causing disease in both wild and cultured fish populations (Vasilkov, 1967; Vismanis & Nikulina, 1968; Uhazy, 1978; Schäperclaus *et al.*, 1991; Yu *et al.*, 1993; Moravec, 1994, 2004a; Moravec & Cervinka, 2005). However, published information on *P. sanguineus* is relatively sparse and confusing. Many early records of the parasite are plagued by morphological and taxonomic inaccuracies (Moravec, 1971, 1994, 2004b; Vismanis & Yukhimenko, 1974) and a large proportion of information is confined to the Russian and Asian literature, a situation that raises difficulties with translation and interpretation. Furthermore, lesions caused by the parasite have not been described and observations of infections in wild fish populations are fragmented. This has limited understanding of the pathogenic importance of this parasite to crucian carp fisheries. During a recent review of dracunculoid nematodes, Moravec (2004a) stated that studies were urgently required to progress understanding of these parasitic worms.

This paper details the pathological changes caused by *P. sanguineus* to wild crucian carp. Particular attention is given to the influence of seasonality upon parasite development and corresponding tissue damage within infected fish.

## Materials and methods

### *Fish sample collection*

Material for parasitological and histopathological examinations was obtained from six samples of crucian carp obtained between 2003 and 2005. These included five stillwater fisheries and a single fish farm, located in the south-east, south-west and midlands regions of England (site details withheld for confidentiality). Samples comprised between 30 and 84 crucian carp and were

obtained in the months of February, April, May, September, October and December. Although sampling effort focused on crucian carp, a single common carp  $\times$  crucian carp hybrid was included in the December sample. All fish were captured by seine netting, transported live to holding facilities at the Environment Agency, Bampton and maintained in 200-litre holding tanks prior to examination.

### *Parasitological examinations*

Fish were killed by lethal anaesthesia (immersion in 5% w/v benzocaine solution), measured (fork length), weighed and examined for gross abnormalities. Scales were taken from each fish to confirm age. Detailed parasitological examinations were conducted to establish location within the host, state of development and parasite sex. These included high-power microscopic examinations of the liver, kidney, spleen, swim-bladder, caudal musculature and intestinal tract. Particular attention was paid to the presence, location and lesions caused by post-copulated female nematodes, due to their large size and seasonal migrations within infected fish (Moravec, 1994).

A few nematodes from each site were examined to confirm species identification. These were fixed in Berland's fluid for 1 h, transferred to 80% ethanol and cleared in beechwood creosote. Voucher specimens of male, unfertilized female and gravid female *P. sanguineus* were deposited in the Natural History Museum, London (accession number NHMUK 2011.1.11.1–9). Nematodes representative of notable stages of development were measured following removal from host tissues. Due to the priority of establishing histopathological changes, only very small numbers of parasites were measured in the September, October and April samples. The reproductive status of female nematodes was also assessed by looking at the state of development of larvae within the uterus.

### *Histopathological studies and scanning electron microscopy*

Tissues for histopathological examination were fixed in either 10% neutral buffered formalin (NBF) or Bouin's fixative. These were trimmed, dehydrated in alcohol series, cleared and embedded in paraffin wax. Sections (thickness 5  $\mu$ m) were stained using Mayer's haematoxylin and eosin (H&E) and examined microscopically for pathological changes. Tissues for scanning electron microscopy were fixed in 10% NBF, dehydrated in a graded alcohol series, critically point dried in CO<sub>2</sub>, sputter-coated with gold and viewed with a Jeol Scanning Electron Microscope.

## Results

### *Prevalence and intensity of P. sanguineus infection*

In the six samples of crucian carp examined, prevalence of female *P. sanguineus* ranged between 12.8 and 27.5%, with intensity of infection between 1 and 8 nematodes per host (mean intensity 1.1–2.7 worms) (table 1). The heaviest infection recorded during the study comprised six female nematodes located in the tail and two in the

Table 1. Sample size and infection levels of *P. sanguineus* in crucian carp from six sites in England between 2003 and 2005.

Site	Month of sampling	Number of <i>C. carassius</i> examined	Length range of all fish examined, mm (mean)	Weight range of all fish examined, g (mean)	Prevalence/Intensity range (mean)	
					Females	Males
1	February	84	38–308 (162)	1.1–748 (126.2)	17.9%/1–4 (1.9)	9.4%/1–3 (1.4)
2	April	18	52–174 (113)	2.6–78 (38.6)	21.4%/1–2 (1.3)	7.1%/1 (1)
3	May	30	99–190 (142)	19–121 (46.6)	20%/1–2 (1.2)	10%/1–3 (1.7)
4	September	39	83–184 (113)	11.2–129 (33)	12.8%/1–2 (1.2)	10.2%/1 (1)
5	October	69	36–128 (84)	0.7–435 (12.1)	17.4%/1–2 (1.1)	8.7%/1–2 (1.2)
6	December	40	98–211 (134)	14.8–131.8 (45.1)	27.5%/1–8 (2.7)	15%/1–2 (1.5)

dorsal fin of a crucian carp measuring 153 mm (aged 3+ years). The smallest infected fish examined was 54 mm long (aged 1+ years) and harboured a single female nematode in the tail. *Philometroides sanguineus* was recorded in crucian carp between 1+ and 5+ years. At no time during the study were any crucian carp fry found to harbour *P. sanguineus* infection. A single gravid female *P. sanguineus* was also recorded in the common carp × crucian carp hybrid.

#### Detection and seasonal development of *P. sanguineus*

*Philometroides sanguineus* followed a seasonal cycle of development and reproduction in crucian carp populations sampled in England. Male and female nematodes also exhibited clear sexual dimorphism, which was an important influence on parasite detection within infected fish. Adult male *P. sanguineus* were recorded on the kidney and serosal surface of the swim-bladder (fig. 1a). These nematodes were thread-like, measured 2–3 mm in length and possessed a round head, smooth cuticle and conspicuous yellow-orange spicules. The presence of male nematodes on the swim-bladder at all times of year, combined with the occasional detection of degenerate nematodes in the same location, suggested that male parasites did not undergo further tissue migrations. A small number of unfertilized female nematodes were also recorded on the swim-bladder surface. These transparent nematodes possessed blunt rounded ends and measured approximately 2.5 mm.

Gravid female *P. sanguineus* were first detected in the fins of crucian carp in early September and remained within this location until May. Nematodes detected throughout this period varied in size, colour and state of reproductive development. Two female *P. sanguineus* recovered from the caudal musculature of a single crucian carp in September were consistent with nematodes in mid-migration to the fins. These individuals measured approximately 5 mm in length and were not easily detected in the host tissues. Gravid female nematodes recently established within the fins measured between 12 and 14 mm, were a light, translucent brown in colour and were covered in numerous cuticular bosses. By October, infections of female *P. sanguineus* were very conspicuous (fig. 1b), consisting of bright red nematodes measuring between 38 and 51 mm in length. Female *P. sanguineus* retained this red colouration throughout winter and spring, ranging from 32 to 54 mm in April. Nematodes examined between September and May revealed clear larval development. The round eggs recorded in autumn became progressively elongated and active throughout the winter and early spring. By April and May all gravid female parasites examined contained highly active, fully developed larvae.

The tail was the primary site of female *P. sanguineus* infection (fig. 1b) with 90.1% of nematodes recorded within this position. Nematodes were less frequently observed within the dorsal fin (fig. 1c) (4.5%), pectoral fin (2.3%) and anal fin (2.3%). In the majority of fish examined, female nematodes were positioned in a U-shape, with the head and tail extending toward the fin tip and the parasites' mid-body into the fin base (fig. 1d). Female nematodes generally utilized different positions

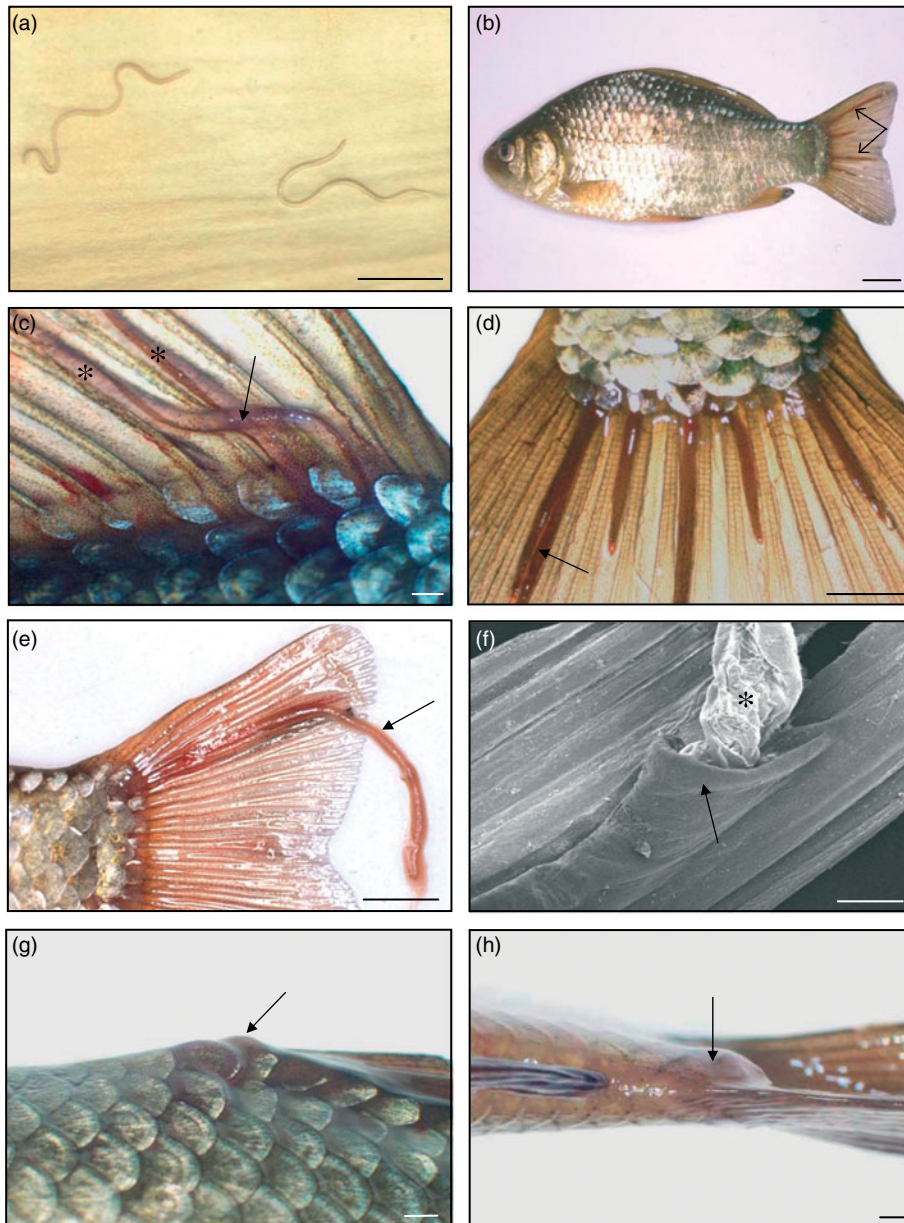


Fig. 1. (a) Two adult male *Philometroides sanguineus* on the swim-bladder of *Carassius carassius* (scale bar = 1 mm). (b) Adult crucian carp infected with two female *P. sanguineus*, showing conspicuous red-coloured nematodes positioned in a U-shape between caudal fin rays (arrows) (scale bar = 10 mm). (c) Single female *P. sanguineus* within the dorsal fin of *C. carassius*. The head and tail (\*) of the nematode are directed towards the fin tip while the body, which overlaps itself (arrow), extends into the dorsal musculature (scale bar = 1 mm). (d) *Carassius carassius* tail infected with three gravid female *P. sanguineus*, showing nematodes within same inter-ray space (arrow) (scale bar = 10 mm). (e) Ruptured female *P. sanguineus* (arrow) trailing from the tail of *C. carassius* following larval dispersal (scale bar = 10 mm). (f) Scanning electron micrograph of female nematode (\*) following larval dispersal. The tunnel (arrow) in which the nematode developed can be clearly seen (scale bar = 1 mm). (g) Raised nodule (arrow) in the dorsal region of juvenile *C. carassius*, caused by a single female nematode (scale bar = 1 mm). (h) Caudal swelling (arrow) resulting from penetration of a single *P. sanguineus* into the base of the tail (scale bar = 1 mm).

within the fins, although parasites crossing the fin ray elements (fig. 1c) or positioned within the same inter-ray space (fig. 1d) were also observed.

The process of larval dispersal was observed during May in three infected crucian carp. This involved emergence of nematodes from between the fin rays,

until over half of the body was hanging free in the water. Female worms became noticeably turgid before bursting open, releasing a visible cloud of larvae into the water. Remnants of ruptured nematodes remained temporarily attached to the host (fig. 1e and f). The process of larval dispersal did not appear to be synchronized, with



affected fish retaining gravid nematodes within the fins following emergence of others.

#### *Gross pathological changes*

Crucian carp measuring between 62 and 191 mm in length did not show any gross abnormalities or clinical signs as a consequence of *P. sanguineus* infection. An accumulation of opaque material within the fins, particularly around the head and tail of female parasites, was occasionally observed. In juvenile crucian carp measuring less than 60 mm in length, female nematodes extended deep into the fin bases, causing raised swellings of the dorsal (fig. 1g) and caudal (fig. 1h) tissues. This was accompanied by the displacement of scales within these regions. Despite these abnormalities, the skin surrounding these parasites remained intact until the onset of larval dispersal.

#### *Histopathological changes caused by P. sanguineus to the fins of crucian carp*

Infections of male and pre-copulated female *P. sanguineus*, located under the serosal surface of the swim-bladder, caused no changes of pathological importance. Gravid female nematodes within the fins of crucian carp caused localized distention and distortion of the fin tissue (fig. 2a) and displacement of fin ray elements, with compression and thinning of the epithelium. Distortion of the fins was accentuated when more than one parasite shared the same position within the fin (fig. 2b).

In a number of infected fish, blood vessels within the fins were displaced by the presence of female nematodes, although no evidence of vessel damage or rupture was recorded. A homogeneous, eosinophilic layer containing macrophages, lymphocytes and exfoliated host cells was commonly observed between the cuticle of *P. sanguineus* and surrounding host tissue (fig. 2b). The cuticular bosses covering these nematodes were associated with the indentation of epithelium (fig. 2a) and may have been responsible for the observed cell displacement.

The severity of pathological changes caused by *P. sanguineus* was influenced strongly by host size, being most pronounced in smaller crucian carp. Infections in large fish (>150 mm) were accompanied by relatively localized pathological changes and only mild inflammatory changes. In contrast, the presence of gravid female *P. sanguineus* within the fins of juvenile crucian carp led to fin distortion, displacement of tissues along the fin bases, compression and localized degenerative changes (fig. 2c, d and e). In many cases, the muscle surrounding these nematodes was replaced by loose connective tissue interspersed with capillaries and inflammatory cells.

In very small crucian carp (<60 mm), female *P. sanguineus* appeared to extend further into the fin bases and caudal musculature, leading to more pronounced pathological changes than those localized between the fin rays. These infections consisted of nematodes between the fin-ray elements, but also extending into tissues under the skin. These infections caused scale displacement and marked swelling of the dorsal and caudal regions (fig. 2d and e). The epidermis within these regions was often hyperplastic, partly

surrounding the nematodes beneath (fig. 2d). These observations were also accompanied by an influx of inflammatory cells within the epidermis.

Inflammatory changes caused by *P. sanguineus* infection were associated mainly with the seasonal migrations of nematodes into and out of the fins. Parasites recently established in the fins (identified by time of year, nematode size and larval development) provoked an acute inflammatory response comprising large numbers of eosinophils and neutrophils. This reaction was particularly concentrated at the periphery of each nematode (fig. 2f), and was accompanied by localized oedema, hyperplasia, congestion and compression. More established infections (observed in February) revealed the accumulation of host cells around each nematode forming a tunnel of connective tissue. This appeared to partially encapsulate the nematode within a membrane of host tissue. Between the periods of establishment within the fins and larval dispersal, female nematodes remained relatively dormant within the host tissues, causing little additional damage. This was particularly evident in large fish, where infections throughout the winter period appeared benign.

The emergence of gravid female parasites in spring for the purpose of larval dispersal caused additional mechanical damage to the fins and breached the integrity of the skin. This reproductive behaviour was associated with an influx of inflammatory cells around the parasite consisting of granular cells, eosinophils, neutrophils and aggregations of lymphoid cells. This represented a pronounced immune response to infection. The rupture of nematodes during larval dispersal resulted in rapid shrinkage of the parasite and collapse of the cuticle within the fin (fig. 2g). In such cases, large numbers of inflammatory cells and small numbers of blood cells were observed adjacent to the parasite's cuticle (fig. 2g). During multiple parasite infections inflammation extended beyond the direct site of parasite attachment, with increased numbers of inflammatory cells extending throughout the fin. Examination of fin tissue after parasite emergence revealed hyperplasia of the epidermis, localized necrotic changes and a central mass of connective tissue in the area vacated by the parasite (fig. 2h).

## Discussion

The literature suggests that philometrid nematodes can have profound detrimental effects on fish (Bauer *et al.*, 1969; Paperna & Zwerner, 1976; Moravec & Dykova, 1978; Sinderman, 1987; Moravec, 1994, 2004a, 2006; Kaall *et al.*, 2001; Wang, 2002; Moravec *et al.*, 2003). In particular, parasites of the genus *Philometroides* have been associated with disease in a range of freshwater fish species. Examples include *P. cyprini* (syn. *P. lusiana*, *P. lusii*) within the skin of common carp (Vismanis, 1966; Vasilkov, 1967, 1983; Schäperclaus *et al.*, 1991; Moravec, 2004a; Moravec & Cervinka, 2005), *P. sanguineus* within the fins of crucian carp (Wierzbicki, 1958, 1960; Vismanis & Nikulina, 1968; Vismanis, 1978; Vasilkov, 1983; Moravec, 1994), *P. fulvidraco* Yu, Wu & Wang, 1993 in the eyes of bullhead catfish (Wang, 2002) and *P. huronensis* Uhazy, 1976 within

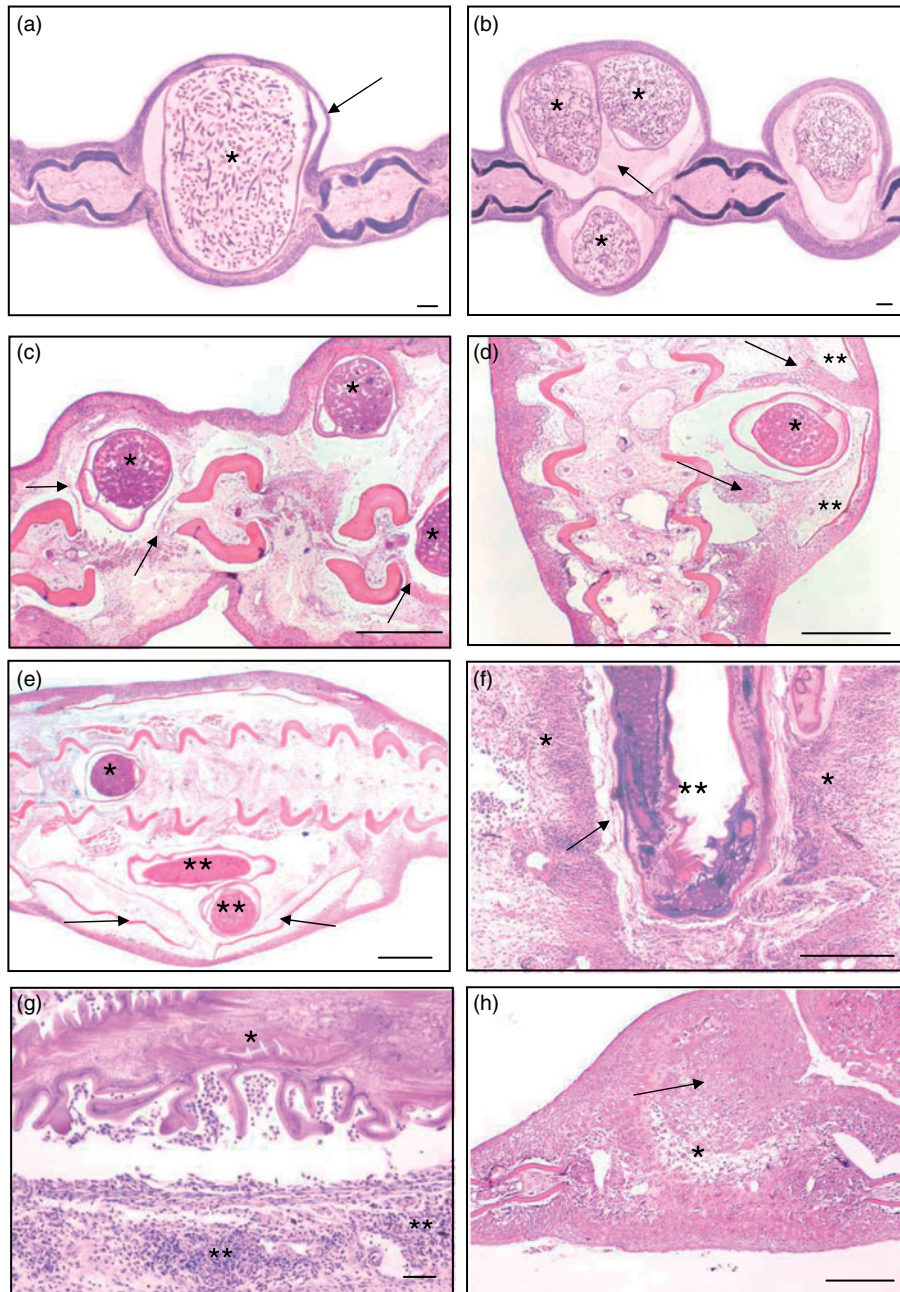


Fig. 2. (a) Transverse section (TS) of *Carassius carassius* tail with a single *Philometroides sanguineus* (\*) causing localized distension of inter-ray space and thinning of epithelium (arrow) (scale bar = 100  $\mu$ m). (b) Female nematodes (\*) positioned between the same fin rays, accentuating swelling of the caudal fin. Eosinophilic material (arrow), containing macrophages, lymphocytes and exfoliated host cells, surrounds the parasite (scale bar = 100  $\mu$ m). (c) TS of *C. carassius* dorsal fin infected with three gravid nematodes (\*) causing displacement of fin rays, localized degeneration of skeletal muscle and compression of connective tissues (arrows) (scale bar = 1 mm). (d) Swelling of the caudal region of *C. carassius*. Presence of a single *P. sanguineus* (\*) causing distortion of fin rays and displacement of scales (\*\*). Hyperplastic epidermis (arrows) has partially surrounded the parasite (scale bar = 1 mm). (e) Pronounced swelling of the caudal region of *C. carassius*, with scale displacement (arrows). Nematodes can be seen between the fin ray elements (\*) extending into the tissue under the skin (\*\*) (scale bar = 1 mm). (f) Infiltration of inflammatory cells (\*) surrounding a newly established nematode (\*\*). Connective tissue along the sides of the nematode (arrow) represents early encapsulation (scale bar = 1 mm). (g) *Carassius carassius* tail following larval dispersal. Collapse of the parasite (\*), with shrinkage of the cuticle, is accompanied by an acute inflammatory response (\*\*) directed toward the parasite (scale bar = 100  $\mu$ m). (h) TS of caudal fin following parasite emergence. Hyperplasia of tissues between the fin rays can be seen (arrow), with connective tissue in the area vacated by the parasite (\*) (scale bar = 1 mm).

the skin of freshwater suckers (Uhazy, 1978; Vasilkov, 1983; Moravec, 1994). Despite these accounts, little detailed information exists on the epidemiology and pathological lesions caused by these parasites. According to Williams (1967) and more recently Moravec (1994) and Molnar *et al.* (2006), the pathogenicity of parasitic nematodes is one of the most neglected fields of fisheries parasitology. This paper provides the first account of the pathological changes associated with *P. sanguineus* in wild crucian carp.

The damage caused by *P. sanguineus* was influenced strongly by host size and the seasonal migrations of nematodes into and out of the fins. Adult crucian carp harbouring up to eight female parasites showed no obvious signs of debilitation, with relatively localized tissue damage and mild inflammatory responses. In contrast, infections of *P. sanguineus* in smaller fish were characterized by swelling of the fin bases, fin distortion, tissue displacement, degenerative changes and marked inflammatory responses during periods of nematode activity. The severity of these changes was attributed to the fact that in very small fish, nematodes extended further into the fin bases, leading to greater tissue damage and a larger proportion of host tissue being displaced by these parasites.

Margolis (1970) highlighted the importance of host and parasite size in the pathogenicity of nematodes, suggesting there may be a cut-off size under which fish become noticeably diseased, and over which hosts tolerate infection. According to Wierzbicki (1958, 1960) who conducted experimental studies to elucidate the life-cycle development of *P. sanguineus*, crucian carp measuring less than 90 mm do not survive infection. Unfortunately, no information was provided on parasite intensity or clinical signs of disease. Current histopathological observations of crucian carp measuring 90 mm and harbouring up to five female nematodes revealed a number of pathological changes. However, these were mainly localized and were considered unlikely to cause serious host debilitation. In the samples examined, crucian carp measuring less than 60 mm appeared to be most compromised by *P. sanguineus* infection, indicating that impacts in wild fish populations may be limited to only very small fish. Recent studies on the growth and reproduction of crucian carp in England indicate that this size corresponds to fish within their first year of life (Tarkan *et al.*, 2009).

Within Eastern Europe, crucian carp may attain only 20 mm in their first year and gain maturity at less than 60 mm (Szczerbowski *et al.*, 1997). In the UK, farmed 0 + crucian carp may exceed 100 mm (Henshaw, pers. comm.), although a wild fish reaching 60 mm in its first year is quite exceptional (Tarkan *et al.*, 2009). This elasticity in host size is likely to be an important factor dictating the degree of impact of *P. sanguineus* in crucian carp populations. Factors affecting crucian carp growth, including population density, food availability, pond succession status and seasonal temperatures (Laurila *et al.*, 1987; Copp *et al.*, 2008; Tarkan *et al.*, 2009) may therefore determine susceptibility to *P. sanguineus* infection. This highlights the importance of considering host age, as well as host size when detailing the pathological changes associated with fish parasites,

particularly those that may have a seasonal influence on fish (Chubb, 1980).

In England, *P. sanguineus* follows a seasonal cycle of development and reproduction. Parasite infections in crucian carp are acquired during spring, followed by the migration of female nematodes into the fins during summer, reproductive development throughout winter and larval dispersal the following spring. This is consistent with published literature on the development of *P. sanguineus* in other parts of Europe (Yashchuk, 1971; Vismanis, 1978; Chubb, 1980). The absence of sampling during early summer prevented observations of *P. sanguineus* transmission in crucian carp following the ingestion of infected copepods. It is well recognized that the penetration of larval nematodes through the intestine of infected fish can be the cause of tissue damage. However, the very small size of these parasites and low numbers of adult *P. sanguineus* recorded within host tissues suggest that this is less important than migrations of post-copulated female parasites. Similarly, the encapsulation of female nematodes within the fins throughout winter limited host damage when compared with female parasites in their migratory phases. This is consistent with other parasitic nematodes (Choudhury & Cole, 2008), including *P. huronensis* in the skin of the white sucker, *Catostomus commersonii* (see Uhazy, 1978).

The process of larval dispersal, also known as 'functional bursting' (Lewis *et al.*, 1974), is characteristic of many philometrid nematodes and can be potentially harmful to infected fish (Moravec & Dykova, 1978; Uhazy, 1978; Vasilkov, 1983; Moravec, 1994; Wang, 2002). During the present study, this reproductive behaviour was accompanied by pronounced inflammatory changes and loss of skin integrity. Such damage may increase susceptibility of infected fish to secondary infections (Schäperclaus *et al.*, 1991). These observations confirm that the seasonal activity of *P. sanguineus* holds important implications for infected fish, with autumn and spring being the most susceptible periods for small crucian carp.

According to Vasilkov (1983), philometroidosis was responsible for serious losses in crucian carp fry in the Ukraine, where prevalence of infection reached 100% of the population. The disease occurred either in an acute form, which resulted from newly acquired infections in 6- to 8-week-old fry, or as a chronic infection, which debilitated infected hosts during migration and development of adult female parasites. Vismanis & Nikulina (1968) reported a mass mortality of small crucian carp in Russia in 1966 as a result of heavy parasitic infections. Infections in wild fish populations have also been recorded in Czechoslovakia (Čátek, 1957), Poland (Wierzbicki, 1960) and Hungary (Molnar, 1966). These impacts are supported by experimental observations, which indicate that small crucian carp are unable to withstand internal migrations of *P. sanguineus* (Wierzbicki, 1958, 1960). According to Vasilkov (1967), infections of just three *P. cyprini* are known to kill common carp fry, with up to 50% mortality, adding support to the idea that 0 + fish are very vulnerable to the consequences of infection. Histopathological observations of *P. sanguineus* support the potential for disease in crucian carp fry. However, the low prevalence and intensity of infections recorded in sites throughout England suggests that this



may affect only a small proportion of fish and questions the importance of these infections at the population level.

During the current study, the smallest infected fish examined measured 54 mm and harboured a single female nematode. Scale reading confirmed that this fish was 1 + years old. To date, no infected 0 + crucian carp have been recorded in England and Wales, despite the examination of many small fish from infected fisheries. This could be a consequence of parasite-induced mortality, supported by records of acute philometroidosis outbreaks during spring in fry populations (Vasilkov, 1967). If this possibility is true, then infections in 0 + fish may have been missed by the spot-sampling conducted in this study. However, it is considered more likely that this absence is the result of mis-timing between the presence of infected copepods during early summer and the ingestion of this intermediate host by crucian carp fry. Yaschuk (1974) highlighted the narrow window of transmission of *P. sanguineus* in early summer, suggesting this could be used to control disease risks when stocking farm ponds. Goll  ty *et al.* (2005) recorded an absence of the philometrid nematode, *Margolisianum bulbosum*, in the small southern flounder, *Paralichthys lethostigma*. This was attributed to delayed development of larvae within this host, rather than an absence of infection. Current observations suggest that 0 + crucian carp either lack infection, or that prevalence in these hosts is so low that sampling has so far limited observations of these individuals. Consequently, the lesions associated with *P. sanguineus* in 1 + crucian carp may represent a gross underestimate of pathogenicity in 0 + fish, should these fish become infected. Further studies are required to assess the susceptibility of fry to *P. sanguineus* infection and the factors dictating transmission within this year class (Anderson, 2000).

Nematodes are often considered to be benign parasites and seldom the cause of mortality (Sinderman, 1987). Notwithstanding, sub-lethal infections can have important implications for wild fish populations (Sinderman, 1987; Choudhury & Cole, 2008). *Philometra saltatrix* infects the gonads of sexually mature Atlantic bluefish *Pomatomus saltatrix*. These infections cause no gross disease signs, but reduce reproductive potential (Sinderman, 1987). This nematode has also been described as a serious pathogen of 0 + bluefish, causing necrosis and inflammation of the heart and pericardial cavity (Cheung *et al.*, 1984). According to Genc *et al.* (2005) *Philometra lateolabracis* causes severe lesions in the ovaries of groupers, disturbing egg release and blocking ovarian ducts. Heavy infections of *P. fulvidraconi* are known to cause lens opacity, eye loss and occasional mortality of bullhead catfish *Pseudobagrus fulvidraconi* in China (Yu *et al.*, 1993). Infections of *Philometra ovata* caused abdominal swelling and impaired the swimming ability of wild-caught *Gobio lozanoi* from Portugal (Saraiva *et al.*, 2008). The close association of *P. sanguineus* with the fins of crucian carp could have similar effects, reducing fin movement, swimming performance or even the ability to escape predators. Similar effects have been proposed for *Philometroides paralichthydis* in marine flatfish (de Buron & Roumillat, 2010). In the case of *P. sanguineus*, it is understandable how the migration and development of a nematode that exceeds the length of its host, and is

maintained throughout the first year of a fish's life, could cause debilitation. However, identifying and evaluating such effects in wild fish populations remains problematic, as sick fish are rapidly removed by predators, water flow and necrophages (Blanc, 1997).

According to Sch  perclaus *et al.* (1991) fish infected with *Philometroides* spp. should, under no circumstances, be used for stocking fisheries. Following the importation of *P. cyprini* to the Czech Republic, a consignment of infected common carp was destroyed and facilities disinfected based upon potential disease threats (Moravec & Cervinka, 2005). Crucian carp infected with *P. sanguineus* have been restricted from movement in England and Wales, based on the precautionary approach to non-native parasite introductions and fishery management (Kennedy, 1994; Hickley, 2009). Precaution is an important consideration in the management of crucian carp populations (Copp *et al.*, 2008). However, this cannot alone be used to justify long-term decision-making, requiring observational data to evaluate disease risks.

Current studies provide little evidence to suggest that *P. sanguineus* is a serious pathogen of adult crucian carp at the intensities recorded. The absence of severe tissue damage or gross pathological changes in most of the fish examined indicates tolerance to these infections. This observation may be explained by three possibilities. First, *P. sanguineus* is not as pathogenic as the literature suggests. Second, environmental stressors play an important role in the characterization of disease. In such cases, only heavy infections may be damaging, while light infections lead to minor physiological disturbance or sub-clinical debilitation. This is known to occur with nematode burdens in both fish and terrestrial animals (Crichton & Beverley-Burton, 1977; Sekretaryuk, 1980, 1983; Gulland, 1992). The third possibility is that the parasite is pathogenic only to very small fish (Wierzbicki, 1958; Vasilkov, 1983; Moravec, 1994), being tolerated once crucian carp attain a certain size. Histopathological observations support this assumption. Further studies are under way to assess the susceptibility of crucian carp fry to *P. sanguineus* infection and the importance of this nematode in the recruitment of wild crucian carp populations.

## Acknowledgements

The authors would like to thank Environment Agency staff for help with obtaining fish samples. Particular thanks to Amy Reading and Jody Armitage, Environment Agency for help with parasitological examinations. Thanks also go to Kelly Bateman (Cefas, Weymouth) for assistance with scanning electron microscopy. The opinions provided in this paper are those of the authors and not their parent organizations.

## References

- Anderson, R.C. (2000) *Nematode parasites of vertebrates. Their development and transmission*. 2nd edn. 650 pp. Wallingford, CABI Publishing.
- Bauer, O.N., Musselius, V.A. & Strelkov Yu, A. (1969) *Diseases of pond fishes*. 220 pp. Moscow, Kolos (in Russian);



- English translation: Israel Program for Scientific Translations, Jerusalem).
- Blanc, G.** (1997) Introduction of pathogens in European aquatic ecosystems: attempt of evaluation and realities. *Bulletin Français de la Pêche et de la Pisciculture* **344-345**, 37–56.
- Bolton, P., Wheeler, A. & Wellby, I.N.** (1998) The future of the Crucian carp. IFM 29th annual study course, Homerton College, Cambridge.
- Cakay, E.** (1957) Nalez *Philometroides sanguinaea* (Rudolphi, 1819) na Slovensku. *Biologia, Bratislava* **12**, 909–914.
- Cheung, P.J., Nigrelli, R.F. & Ruggieri, G.D.** (1984) *Philometra saltatrix* infecting the heart of 0-class bluefish *Pomatomus saltatrix* (L.) from the New York coast. Abstract Joint Workshop, Fish Health Section, AFS and Midwest Fish Disease Group, Little Rock, Arkansas.
- Choudhury, A. & Cole, R.A.** (2008) Phylum Nematoda. pp. 1063–1113 in Eiras, J.C., Segner, H., Wahli, T. & Kapoor, B.G. (Eds) *Fish disease*. Enfield, USA, Science Publishers.
- Chubb, J.C.** (1980) Seasonal occurrence of helminths in freshwater fishes. Part IV Adult Cestoda, Nematoda and Acanthocephala. *Advances in Parasitology* **20**, 1–293.
- Copp, G.H., Warrington, S. & Wesley, K.J.** (2008) Management of an ornamental pond as a conservation site for a threatened native fish species, crucian carp *Carassius carassius*. *Hydrobiologia* **597**, 149–155.
- Crichton, V.E.J. & Beverley-Burton, M.B.** (1977) Observations on the seasonal prevalence, pathology and transmission of *Dracunculus insignis* (Nematoda: Dracunculoidea) in the raccoon (*Procyon lotor* L.) in Ontario. *Journal of Wildlife Diseases* **13**, 273–280.
- Davies, C., Shelley, J., Harding, P., McLean, I., Gardiner, R. & Peirson, G.** (2004) *Freshwater fishes in Britain: the species and their distribution*. 176 pp. Colchester, Harley Books.
- de Buron, I. & Roumillat, W.A.** (2010) Histopathology of two philometrid parasites of the southern flounder, *Paralichthys lethostigma*. *Journal of Wildlife Diseases* **46**, 277–282.
- Genc, E., Ayce Genc, M., Genc, E., Cengizler, I. & Faith Can, M.** (2005) Seasonal variation and pathology associated with helminths infecting two serranids (Teleostei) of Iskenderun Bay (northeast Mediterranean Sea), Turkey. *Turkish Journal of Fisheries and Aquatic Sciences* **5**, 29–33.
- Gollety, C., Connors, V.A., Adams, A.M., Roumillat, W.A. & Buron, I.** (2005) Population dynamics of the philometrid nematode *Margolisianum bulbosum* in the southern flounder *Paralichthys lethostigma* (Pisces: Paralichthyidae) in South Carolina, USA. *Diseases of Aquatic Organisms* **65**, 69–74.
- Gulland, F.M.D.** (1992) The role of nematode parasites in Soay sheep (*Ovis aries* L.) mortality during a population crash. *Parasitology* **105**, 493–503.
- Häenfling, B., Bolton, P., Harley, M., Carvalho, G.R. & Pierson, G.** (2005) A molecular approach to detect hybridisation between crucian carp (*Carassius carassius*) and non-indigenous carp species (*Carassius auratus* and *Cyprinus carpio*). *Freshwater Biology* **50**, 403–417.
- Hickley, P.** (2009) Recreational fisheries – social, economic and management aspects. pp. 169–189 in Ackefors, H. (Ed.) *Fisheries, sustainability and development*. Stockholm, Royal Swedish Academy of Agriculture and Forestry.
- Kaall, S., Sarvala, J. & Fagerholm, H.P.** (2001) Prevalence and pathogenicity of the gill artery worm *Philometra obturans* (Nematoda, Dracunculoidea) of pike (*Esox lucius* L.) in a lake in SW Finland. *Bulletin of the Scandinavian Society for Parasitology* **11**, 13–14.
- Kennedy, C.R.** (1994) The ecology of introductions. pp. 189–208 in Pike, A.W. & Lewis, J.W. (Eds) *Parasitic diseases of fish*. Dyfed, Samara Publishing.
- Laurila, S., Piironen, J. & Holopainen, I.J.** (1987) Notes on egg development and larval and juvenile growth of crucian carp (*Carassius carassius* (L.)). *Annales Zoologici Fennici* **24**, 315–321.
- Lewis, J.W., Jones, D.R. & Adams, J.R.** (1974) Functional bursting by the dracunculoid nematode *Philonema oncorhynchi*. *Parasitologia* **69**, 417–427.
- Margolis, L.** (1970) Nematode diseases of marine fishes. pp. 190–208 in Snieszko, S.F. (Ed.) *A symposium on diseases of fishes and shellfishes*. American Fisheries Society Special Publication 5.
- Molnar, K.** (1966) On some little-known and new species of the Genera *Philometra* and *Skrjabillanus* from fishes in Hungary. *Acta Veterinaria Academiae Scientiarum Hungaricae Tomus* **16**, 143–158.
- Molnar, K., Buchmann, K. & Szekely, C.** (2006) Phylum Nematoda. pp. 417–443 in Woo, P.T.K. (Ed.) *Fish diseases and disorders*, Vol. 1. Protozoa and metazoan infections. Cambridge, Massachusetts, CABI Publishing.
- Moravec, F.** (1971) Nematodes of fishes in Czechoslovakia. *Acta Scientiarum Naturalium Academiae Scientiarum Bohemoslovacae Brno* **5**, 1–49.
- Moravec, F.** (1994) *Parasitic nematodes of freshwater fishes of Europe*. 473 pp. Prague and Dordrecht, Academia and Kluwer Academic Publishers.
- Moravec, F.** (2004a) Some aspects on the taxonomy and biology of dracunculoid nematodes parasitic in fishes: a review. *Folia Parasitologica* **51**, 1–13.
- Moravec, F.** (2004b) The systematic status of *Philometra abdominalis* Nybelin, 1928 (Nematoda: Philometridae) (=a junior synonym of *P. ovata* Zeder, 1803). *Folia Parasitologica* **51**, 75–76.
- Moravec, F.** (2006) *Dracunculoid and anguillicoloid nematodes parasitic in vertebrates*. 633 pp. Praha, Academia.
- Moravec, F. & Cervinka, S.** (2005) Female morphology and systematic status of *Philometroides cyprini* (Nematoda: Philometridae) a parasite of carp. *Diseases of Aquatic Organisms* **67**, 105–109.
- Moravec, F. & Dykova, I.** (1978) On the biology of the nematode *Philometra obturans* (Prenant, 1886) in the fishpond system of Macha Lake, Czechoslovakia. *Folia Parasitologica* **29**, 227–231.
- Moravec, F., Glamuzina, B., Marino, G., Merella, P. & Di Cave, D.** (2003) Occurrence of *Philometra lateolabracis* (Nematoda: Philometridae) in the gonads of marine perciform fishes in the Mediterranean region. *Diseases of Aquatic Organisms* **53**, 267–269.
- Paperna, I. & Zwerner, D.E.** (1976) Parasites and diseases of striped bass, *Morone saxatilis* (Walbaum), from the lower Chesapeake Bay. *Journal of Fish Biology* **9**, 267–287.

- Saraiva, A., Hermida, M., Costa, M.J., Maia, C., Reis, A.R., Cruz, C. & Valente, A. (2008) First record of *Philometra ovata* (Nematoda) infection in *Gobio lozanoi* in Portugal. *Journal of Fish Biology* **73**, 2288–2292.
- Schäperclaus, W., Kulow, H. & Schreckenbach, K. (Eds) (1991) *Fish diseases*. 5th edn. 1398 pp. New Delhi, Oxion Press.
- Sekretaryuk, K.V. (1980) Study of transaminase and aldolase activity in *Philometroides* infection in carp. *Doklady Vsesoyuznoy Akademii Sel'skokhozyaystvennykh Nauk V.I. Lenina* **11**, 37–38 (in Russian).
- Sekretaryuk, K.V. (1983) Morphological and histochemical changes during *Philometroides* infection in carp. *Veterinariya* **9**, 45–47 (in Russian).
- Sinderman, C.J. (1987) Effects of parasites on fish populations: practical considerations. *International Journal for Parasitology* **17**, 371–382.
- Szczerbowski, A., Zakes, Z., Luczynski, M.J. & Szkudlarek, M. (1997) Maturation and growth of a stunted form of crucian carp *Carassius carassius* L. in natural and controlled conditions. *Polish Archive of Hydrobiology* **44**, 171–180.
- Tarkan, A.S., Copp, G.H., Zieba, G., Godard, M.J. & Cucherousset, J. (2009) Growth and reproduction of threatened native crucian carp *Carassius carassius* in small ponds of Epping Forest, south-east England. *Aquatic Conservation: Marine and Freshwater Ecosystems* **19**, 797–805.
- Uhazy, L.S. (1978) Lesions associated with *Philometroides huronensis* (Nematoda: Philometridae) in the white sucker (*Catostomus commersoni*). *Journal of Wildlife Diseases* **14**, 401–406.
- Vasilkov, G.V. (1967) Philometrosis of carp. *Veterinariya* **1**, 62–64 (in Russian).
- Vasilkov, G.V. (1983) *Helminthoses of fishes*. 208 pp. Moscow, Kolos (in Russian).
- Vismanis, K.O. (1966) Study of the agent of philometrosis of carp. *Simposium po parazitam i boleznyam ryb i vodnykh bespozvochnykh. Tezisy dokladov*. pp. 9–10. Moscow-Leningrad, Nauka (in Russian).
- Vismanis, K.O. (1978) Philometrids (Nematoda, Dracunculoidea) of freshwater fishes of the USSR. *Fourth International Congress of Parasitology*, August 1978, pp. 186–187 (in Russian).
- Vismanis, K.O. & Nikulina, V.N. (1968) Systematic status of *Philometra sanguineus* (Rudolphi, 1819) (Nematoda, Dracunculidae), a causative agent of philometrosis in crucian carps. *Parazitologiya* **2**, 514–517 (in Russian with English summary).
- Vismanis, K.O. & Yukhimenko, S.S. (1974) On the morphology of *Philometroides dogieli* sp. n. (Nematoda: Philometridae) from the fins of *Elopichthys bambusa*. *Parazitologiya* **8**, 53–56 (in Russian with English summary).
- Wang, G.T. (2002) Seasonal dynamics and distribution of *Philometroides fulvidraconi* (Philometroidae) in the bullhead catfish, *Pseudobagrus fulvidraco* (Richardson). *Journal of Fish Diseases* **25**, 621–625.
- Wheeler, A. (1977) The origin and distribution of the freshwater fishes of the British Isles. *Journal of Biogeography* **4**, 1–24.
- Wheeler, A. (2000) Status of the crucian carp, *Carassius carassius* (L.) in the UK. *Fisheries Management & Ecology* **7**, 315–322.
- Wierzbicki, K. (1958) *Filometroza karasia* (Philometrosis *carassii*). *Wiadomosci Parazytologiczne* **4**, 655–657.
- Wierzbicki, K. (1960) Philometrosis of crucian carp. *Acta Parasitologica Polonica* **8**, 181–196.
- Williams, H.H. (1967) Helminth diseases of fish. *Helminthological Abstracts* **36**, 261–295.
- Yashchuk, V.D. (1971) Life cycle of *Philometra sanguineus* of carp. *Veterinariya* **48**, 73–75 (in Russian).
- Yashchuk, V.D. (1974) Dynamics of the infestation of the intermediate hosts of *Philometroides sanguinaea*. *Veterinariya, Moscow* **6**, 69–71 (in Russian).
- Yu, Y., Wang, G., Feng, W., Wu, H. & Wang, W. (1993) Philometroidiasis of yellow catfish, *Pseudobagrus fulvidraco* life cycle of the pathogen and its epidemiology. *Transactions of Researchers on Fish Diseases* **1**, 116–122 (in Chinese with English summary).