

The Journal of Neuroscience

Evidence accumulation and the moment of recognition: dissociating perceptual recognition processes using fMRI

Journal:	<i>Journal of Neuroscience</i>
Manuscript ID:	JN-RM-3522-07.R1
Manuscript Type:	Regular Manuscript
Manuscript Section:	Behavioral System Cognitive
Date Submitted by the Author:	n/a
Complete List of Authors:	Ploran, Elisabeth; University of Pittsburgh, Psychology Nelson, Steven; Washington Univ School of Medicine, Neuroscience Velanova, Katerina; University of Pittsburgh, Psychiatry Donaldson, David; University of Stirling, Psychology Petersen, Steven; Washington Univ School of Medicine, Dept of Neurology Wheeler, Mark; University of Pittsburgh, Psychology
Keywords:	perception, evidence accumulation, perceptual recognition, cognition, fMRI, visual
Themes & Topics:	a. Perception and imagery & 1. Human Cognition and Behavior & Theme F: Cognition and Behavior



Edvard Moser, Earl K. Miller

Evidence accumulation and the moment of recognition: dissociating perceptual recognition processes using fMRI

Elisabeth J. Ploran^{1*}, Steven M. Nelson^{2*}, Katerina Velanova⁶, David I. Donaldson⁷, Steven E. Petersen^{2, 3, 4, 5}, and Mark E. Wheeler^{1†}

Department of Psychology, Learning Research and Development Center, Center for the Neural Basis of Cognition, University of Pittsburgh, Pittsburgh, PA, USA¹.

Departments of Neurology², Psychology³, Radiology⁴, Anatomy & Neurobiology⁵, Washington University, St. Louis, MO, USA.

Department of Psychiatry, University of Pittsburgh, Pittsburgh, PA, USA⁶

Department of Psychology, University of Stirling, Stirling, UK⁷.

†Address correspondence to:

M. E. Wheeler, University of Pittsburgh, 608 LRDC, 3939 O'Hara St., Pittsburgh PA 15260. E-mail: wheelerm@pitt.edu

Figures: 8 Tables: 4 Supplemental Figures: 3 Supplemental Text: 1 document (1 page)

Pages: 49 Abstract words: 167 Introduction words: 500 Discussion words: 1478

Keywords: Perceptual recognition, decision making, cognition, fMRI, visual, evidence accumulation

*EJP and SMN contributed equally. Randy Buckner, Nico Dosenbach, Ronny Dosenbach, Damien Fair, Anthony Jack, Francis Miezin, and Erik Reichle provided helpful comments and suggestions. Abraham Snyder and Mark McAvoy provided imaging analysis software and support, Kwan-Jin Jung provided MR technical assistance, and Kate Fissel assisted with image processing.

Abstract

Decision making can be conceptualized as the culmination of an integrative process in which evidence supporting different response options accumulates gradually over time. We used functional Magnetic Resonance Imaging (fMRI) to investigate brain activity leading up to and during decisions about perceptual object identity. Pictures were revealed gradually and subjects signaled the time of recognition (T_R) with a button press. We examined the timecourse of T_R -dependent activity to determine how brain regions tracked the timing of recognition. In several occipital regions, activity increased primarily as stimulus information increased, suggesting a role in lower level sensory processing. In inferior temporal (IT), frontal and parietal regions, a gradual buildup in activity peaking in correspondence with T_R suggested that these regions participated in the accumulation of evidence supporting object identity. In medial frontal cortex, anterior insula/frontal operculum, and thalamus, activity remained near baseline until T_R , suggesting a relation to the moment of recognition or the decision itself. The findings dissociate neural processes that function in concert during perceptual recognition decisions.

Decision making involves the formation of a set of response options, the gathering and synthesis of information, and the selection of a response. Accumulator models (Audley and Pike, 1965; Link and Heath, 1975; Ratcliff, 1978; Ratcliff and McKoon, 1982; Smith and Vickers, 1988; Usher and McClelland, 2001) describe evidence gathering as a gradual process in which evidence supporting different choices accrues over time. Incoming information is evaluated and assigned to a response option, and a decision is made when the evidence exceeds a response threshold. Accumulator models have proven highly effective in describing human performance in recognition memory, lexical decisions, economic decisions and sensory discriminations (Ratcliff, 1978; Busemeyer, 1985; Bundesen, 1990; Nosofsky and Palmeri, 1997; Ratcliff and Rouder, 1998; Logan and Gordon, 2001; Ratcliff et al., 2004; Gold and Shadlen, 2007). Such models also appear to describe the evolution of neural spiking rates in macaque frontal eye fields during initiation of eye movements (Hanes and Schall, 1996), the lateral intraparietal area (Shadlen and Newsome, 2001) and dorsolateral prefrontal cortex (dlPFC) (Kim and Shadlen, 1999) during motion detection, and superior colliculus during distance judgments (Ratcliff et al., 2003). Importantly, the neurophysiological data provide a link between empirically derived patterns of activity and evidence accumulation. The relationship between neuronal activity and choice outcome indicates that neural processors compute behavioral decision variables by integrating afferent inputs over time (Hanes and Schall, 1996; Kim and Shadlen, 1999; Platt and Glimcher, 1999; Shadlen and Newsome, 2001; Cook and Maunsell, 2002; Roitman and Shadlen, 2002; Hanks et al., 2006; Gold and Shadlen, 2007).

Although such work has been conducted extensively in non-human primates, very little has been done to identify the neural mechanisms of evidence accumulation in human decision making (Heekeren et al., 2004). We used functional Magnetic Resonance Imaging (fMRI) to

Evidence accumulation and the moment of recognition

study accumulation and decision making in an extended perceptual recognition task (James et al., 2000; Carlson et al., 2006). Perceptual recognition can occur rapidly. To ensure that the timing of recognition responses varied sufficiently to overcome the limited temporal resolution of fMRI, noise-occluded pictures were revealed gradually over 16 sec. Subjects indicated when they recognized the stimulus identity. This response provided an estimate of the time of recognition (T_R). A second response at the end of the trial, when the stimulus was fully revealed, verified the accuracy (VoA) of earlier recognition. Because we were primarily interested in studying decision processes, VoA served as one method to control motor activity occurring at T_R .

In an accumulator model framework, perceptual recognition follows a period of evidence gathering and maintenance. To identify neural substrates of these time-dependent processes, we measured BOLD responses during, and in the period leading up to, the time of recognition. We hypothesized that fMRI activity related to accumulation and recognition processes would vary as a function of T_R , with longer T_R s associated with later BOLD responses. We present data from two experiments demonstrating that perceptual recognition is accomplished in dissociable sets of brain regions that process sensory inputs, accrue evidence, and signal recognition.

Methods

Two experiments were conducted on two separate groups of participants. Experiments 1 (Exp1) and 2 (Exp2) were nearly identical, except that we used within-trial jitter in Exp1 and added trials in Exp2. Experiment 1 was designed to identify regions of interest (ROIs) that contribute to perceptual recognition. Experiment 2 was designed to evaluate the timecourse of T_R -dependent activity in those regions. We chose this two-experiment approach for several reasons. First, comparing T_R and VoA events in Exp1 reduced the probability that ROIs would be related to motor processing. Second, because ROIs were defined using data from one set of

subjects (Exp1) and applied to data from a different set of subjects (Exp2), the ROI-based timecourse data from Exp2 were not biased to show specific effects. Third, whereas within-trial jitter was needed in Exp1 to separate BOLD responses associated with recognition and VoA events, in Exp2 we eliminated the within-trial jitter to reduce the complexity of the timecourses. In all cases below, anatomical labels and Brodmann's areas (BA) are approximate.

Subjects

Participants were 31 right-handed, native English speakers with normal or corrected-to-normal vision (18 female, age 19-29 years). Four participants were excluded from analysis due to excessive movement and two were excluded due to data loss. Of the remaining 25 participants, 12 were run in Exp1 and 13 in Exp2. Some runs from four of the participants were excluded due to excessive movement. Informed consent was obtained in a manner approved by the Institutional Review Board of the University of Pittsburgh and participants received \$75.

Stimuli

The pictures were 233 grayscale images (Rossion and Pourtois, 2004) reformatted into a standard 284 x 284 pixel image with a white background. Five images were reserved for the practice session; five lists of 12 (Exp 1) or 20 (Exp 2) pictures were randomly selected out of the remaining 228 pictures for task presentation. Each subject received his or her own randomly selected list set, ensuring that no participant received exactly the same set and order of images as another. The displayed images subtended an average 10.3° of the visual field and were presented against a black background.

Behavioral Paradigm

Testing consisted of five runs of a perceptual recognition task using picture stimuli, with 12 and 20 trials per run in Exp1 and Exp2, respectively. Runs were randomly intermixed with five runs from a related task, using word stimuli, which is not included in the current report. In each trial, stimulus revelation occurred over 8 discrete steps, each corresponding with acquisition of a whole-brain image (Fig 1a). In Exp1, the steps of revelation were randomly intermixed with six 2 s jitter periods, resulting in an average step duration of 3.5 s. Subjectively, jitter produced a pause of 2, 4, or 6 s between steps of revelation. In Exp2, the revelation steps occurred every 2 s without within-trial jitter. Between-trial jitter of 2, 4, or 6 sec (mean ITI = 4 sec) was included in both experiments to allow event-related analysis of individual trials.

At trial onset, pictures were covered by a black mask. The mask partially dissolved at each successive 2 s interval (i.e., revelation step) until pictures were completely revealed (see Fig. 1a). Participants were instructed to press a button when they could identify the picture with a reasonable degree of confidence (T_R). Neither speed nor accuracy were emphasized in the T_R response, and participants were not specifically encouraged to respond prior to full revelation. When stimuli were fully revealed, participants pressed the same button again only if their earlier recognition had been correct (VoA). We used gradual stimulus revelation over other unmasking procedures (e.g., mask degradation remains constant but areas revealed change from step to step) because we could readily map the quantity of stimulus input onto neural activity as a linear increase across the trial (e.g., Carlson et al., 2006). To help factor out basic lateralized motor signals in group analyses, response hand was counterbalanced across participants (Thielscher and Pessoa, 2007). Psyscope X was used for stimulus presentation and data collection (Cohen et al., 1993) (<http://psy.ck.sissa.it>).

Image Acquisition

Images were obtained using a Siemens Allegra 3T scanner. Visual stimuli were generated on an Apple iBook G4 with PsyScope X and projected onto a screen positioned at the head of the magnet bore using a Sharp PG-M20X digital multimedia projector via a mirror attached to the head coil. Earplugs dampened scanner noise. Responses were made using a fiber optic button stick connected to the computer via an interface unit (Current Designs, Inc; Philadelphia, PA).

Anatomic images were collected using an MP-RAGE sequence (repetition time [TR] = 1540 ms, echo time [TE] = 3.04 ms, flip angle = 8° , TI = 800 ms, delay time [TD] = 0 ms). A series of whole-brain spin-echo echo-planar T2*-weighted functional images sensitive to the blood-oxygen-level-dependent (BOLD) contrast (TR = 2000ms, TE = 30ms, flip angle = 79° , 2.2 x 2.2 in-plane resolution) were collected during testing. The first three image acquisitions were discarded to allow net magnetization to reach steady state.

Data Analysis

General Analysis

Imaging data from each subject were pre-processed to remove noise and artifacts, including: a) correction for movement within and across runs using a rigid-body rotation and translation algorithm (Snyder, 1996), b) whole brain normalization to a common mode of 1000 to allow for comparisons across subjects (Ojemann et al., 1997), and c) temporal re-alignment using sinc interpolation of all slices to the temporal midpoint of the first slice, accounting for differences in the acquisition time of each individual slice. Functional data were then resampled into 2mm isotropic voxels and transformed into stereotaxic atlas space (Talairach and Tournoux, 1988). Atlas registration involved aligning each subject's T1-weighted image to a custom atlas-

transformed (Lancaster et al., 1995) target T1-weighted template using a series of affine transforms (Michelon et al., 2003; Fox et al., 2005).

Pre-processed data were analyzed at the voxel level using a general linear model (GLM) approach (Friston et al., 1994; Miezin et al., 2000). Details of this procedure are described by Ollinger and colleagues (Ollinger et al., 2001). Briefly, the model treats the data at each timepoint (in each voxel) as the sum of all effects present at that timepoint (i). Effects can be produced by events in the model (b) and by error (e). Thus, the equation for a given timepoint i is $y_i = a_{i,0}b_0 + a_{i,1}b_1 + \dots + a_{i,M-1}b_{M-1} + e_i$, where $a_{i,m}$ is a coefficient relating the effect to the data at time i and M is the number of modeled effects. In matrix form this becomes $Y = Ab + e$, where A is the design matrix relating event types with time, b is a vector of events being modeled, and e is a vector of noise. Estimates of the timecourse of effects were derived from the model for each response category by coding timepoints as a set of delta functions immediately following onset of the coded event (Ollinger et al., 2001). The number of timepoints in Exp1 and Exp2 was 9 and 16, respectively. Over each run, a trend term accounted for linear changes in signal, and a constant term modeled the baseline signal. Event-related effects are described in terms of percent signal change, defined as signal magnitude divided by a constant term. This approach makes no assumptions about the shape of the BOLD response, but does assume that all events included in a category (e.g., accurate T_R7) are associated with the same BOLD response (Ollinger et al., 2001). Thus, we could extract timecourses without placing constraints on their shape. Image processing and analyses were carried out using in-house software written in IDL (Research Systems, Inc.).

Group z-statistical maps were derived from the GLM using voxelwise repeated measures ANOVA with time as a repeated factor (Winer et al., 1991). The ANOVA implementation

produces a set of main effect and interactions images determined by the factors in the design (Schlaggar et al., 2002). The main effect of time image identifies voxels in which the temporal profile over the analyzed time period is not flat (i.e., no change in signal). Interaction by time images identify voxels in which activity differs across levels of factors as a function of time. Following is a description of data analysis procedures specific to each experiment.

Experiment 1: region selection

The goal of this analysis was to define regions that showed differential activity at the time of recognition (T_R), independently of when it occurred in the trial, with activity elicited at the time of verification (VoA). A subset of these regions could be specifically related to the time of recognition. Events were coded into the voxel level GLM as follows. Recognition responses occurring before VoA were collapsed into a single T_R condition. Trials with single responses occurring at the VoA stage ('end-trial recognition') were coded separately in the GLM, but were not included in statistical analyses reported here. Trials were sorted by self-reported accuracy (earlier recognition response correct, incorrect) and coded separately according to accuracy. A manual VoA response only occurred on trials that were scored as correct. Trial events were modeled over nine timepoints (18 s) beginning at the time of response. Overall, 6 regressors were coded in each participant's GLM: T_R , VoA correct, VoA incorrect, end-trial recognition, trend, and baseline.

We wanted to identify regions associated with the recognition decision, while at the same time minimizing the extent to which the observed accumulation effects were related to action planning and initiation. To this end, we identified voxels in which activity differed at T_R and VoA by entering the T_R and VoA events into a repeated measures ANOVA (Winer et al., 1991) with event-type (T_R , VoA) and time (9 timepoints) as factors. This analysis produced a number

Evidence accumulation and the moment of recognition

of main effect and interaction images. The interaction of event-type and time image identified voxels in which activity related to T_R and VoA differed over time. We used this image to derive regions of interest that were 1) likely to be involved in the recognition process and 2) unlikely to be directly related to motor planning or execution. Note that we also counterbalanced response hand across subjects to factor out the signals arising from lateralized motor processing areas (Thielscher and Pessoa, 2007). Functional ROI volumes were defined by growing regions around peak voxels using algorithms developed by Abraham Snyder (see Wheeler et al., 2006). This procedure resulted in 73 ROIs (Tables 1-4).

Experiment 2: timecourse analysis

In Exp2, we removed within-trial jitter from the revelation paradigm in order to evaluate the evolution of the BOLD response over a period of regularly increasing stimulus information. The aim was to find differential timing of activity related to different times of recognition.

Events were coded into each participant's GLM as follows. Recognition responses were binned into seven categories according to the step of revelation (T_{R1-7}) in which they occurred. These categories were further subdivided according to recognition accuracy as denoted by the verification response (correct, incorrect). Trials with single responses occurring in the VoA stage ('end-trial recognition') were not further categorized and were coded separately in the GLM. As in Exp1, trend and baseline terms were also modeled, resulting in 17 possible regressors (T_{R1-7} correct, T_{R1-7} incorrect, end-trial recognition, trend, constant) for each subject. While trials were 16 s in length, each event was modeled over 32 s (16 timepoints) to account for the lagged hemodynamic response.

Using ROIs defined in Exp1, we next extracted timecourses for a subset of Exp2 conditions. Behavioral data indicated that most correct recognition responses occurred in steps

T_{R4-7} (Fig. 1c, shaded bars). To maximize power, imaging analysis focused on correct T_{R4-7} trials. Recognition decisions that were judged to be incorrect were also analyzed, but the data are not included in this report. The primary focus is on evaluating the influence of the timing of T_R on the shape of the hemodynamic response, including timing of onset, peak, and width waveform components.

Hierarchical Cluster Analysis

There are several ways in which timecourses might differ between T_R and VoA. Our hope was to define regions fitting the different profiles in Figure 2. To objectively identify such areas (from other response profiles), we used hierarchical cluster analysis (Cordes et al., 2002; Salvador et al., 2005; Dosenbach et al., 2007) to classify the timecourse profiles in the 73 Exp1 regions of interest (ROI). Four timecourses, each consisting of 16 timepoints, were extracted from each ROI relating to recognition times 4-7. The four timecourses were concatenated, resulting in a 1 x 64 vector of timepoints. A 73 x 64 matrix containing each vector from the 73 predefined ROIs was then formed. Correlation coefficients were obtained from the relationship between each region's vector and all other vectors in the matrix. A '1 - r' calculation was then performed as a means of attaining a distance measure between the regions.

From these values, a dendrogram (cluster tree) depicting the region by region relationship was constructed. The method used to build the dendrogram was the commonly chosen UPGMA (Unweighted Paired Group Method with Arithmetic mean; (Handl et al., 2005), which is included in the Statistics and Bioinformatics Toolboxes available in Matlab 7.2 (The MathWorks, Inc.; Natick, MA). Two additional hierarchical clustering algorithms also exist as a means of depicting quantifiable relationships within a dataset. These algorithms are referred to as single and complete linkage. Single linkage defines the distance between two clusters as the

Evidence accumulation and the moment of recognition

minimum distance between any two points within the clusters. This method, however, is susceptible to chaining, which typically fails to produce functionally dissociable clusters of data. In contrast, the complete linkage algorithm defines the distance between two clusters as the *maximum* distance between any two data points within the clusters. The rule implementation in this algorithm often causes the cluster analysis to be susceptible to noise that may contain several outliers. As a means of accommodating more diverse patterns of data, UPGMA was developed (Eisen et al., 1998). The UPGMA algorithm defines the distance between two clusters as the mean distance of all possible pairs of data points between the two clusters.

In order to validate the clusters created by the dendrogram, a cophenetic correlation coefficient (cophenetic r) is calculated. This value, which ranges from 0 to 1, is a measure of how accurately the dendrogram represents the original pairwise distances between each data point in the original distance matrix. A key element of the UPGMA algorithm is that it is designed to maximally preserve the data in the original, unmodeled correlation matrix. Thus, the cophenetic r when using UPGMA will always be greater than or equal to the cophenetic r when using single or complete linkage (Handl et al., 2005). This is indeed the case for our dataset where UPGMA gives a larger cophenetic r (0.8234) than either single linkage (0.6584) or complete linkage (0.7781) approaches.

Linear Interpolation

Once appropriate candidate regions were identified using cluster analysis, the next step involved quantifying aspects of the timecourses related to the hypothesized timecourses of Figure 2. Namely, we used linear interpolation to extract response onset (onset), the time at which the response reached its greatest magnitude (peak), and the overall length of responses, measured as the full width at half maximum (width) of the BOLD response. Group average

timecourses for each T_R (4-7) were used. We interpolated the data for several reasons. First, the timecourse profiles differed substantially across ROIs and in many cases were atypical because of the gradual revelation procedure. For example, in sensory processing and accumulator ROIs, the shape was not well represented by a gamma function (Boynton et al., 1996). Second, signal onsets and the rising edge of the BOLD response occurred quite rapidly in some ROIs, and the 2 sec sampling rate was sometimes insufficient to obtain clear estimates of the timing of signal onsets. Linear interpolation provided a straightforward procedure to quantify timecourse parameters across a variety of different types of response profile, while making the simple assumption that the data values between any two timepoints are adequately approximated by a linear fit between those two points.

We first generated one thousand points between each timepoint, connecting each pair of the sixteen timepoints with a straight line. This procedure transformed each timecourse into a time series of 15,000 timepoints. The peak was defined as the timepoint at which peak magnitude occurred. Peak values always occurred at multiples of the repetition time (2 sec). Width (FWHM) was defined as the distance between the two points at which the timecourse was 50% of the peak magnitude, centered around the peak. The interpolated onset was defined by stepping backward from the peak and identifying the timepoint at which activity exceeded a threshold percentage of peak activity. Because the choice of an onset threshold is not as objectively defined as peak and width, we examined four different threshold values (10%, 15%, 20%, and 25% of peak). The results did not change markedly across the four values, so we used the mean of the four values as the onset point.

Motor Analysis

A separate, supplemental analysis targeted ROIs in sensorimotor cortex to examine

Evidence accumulation and the moment of recognition

timecourses presumably related to overt manual responses, and thus likely showing similar activity at T_R and VoA. The aim of this analysis was to characterize the pattern of BOLD response across T_{RS} that were related to motor production so we could determine the extent to which our procedure factored out motor processing in the decision process. ROIs were defined using data from Exp1, and timecourse data from Exp2 were then extracted from those ROIs. More specifically, participants were divided into two groups according to the response hand (right = 6, left = 7). An ANOVA on Exp1 T_R data, with response hand (left, right) as a between group factor, identified a set of regions in which activity differed as a function of response hand. We identified two ROIs encompassing pre- and post-central gyri (left peak = -41, -26, +58; right = +39, -20, +57; Figure S3). Timecourses from the two ROIs were highly similar, so to increase power we merged the ROIs before extracting timecourses for T_{R4-7} .

Results

Behavioral Results

Experiment 1

In the group analysis ($n = 12$), 620 of 704 picture trials received a recognition response during steps 1-7 (T_{R1-7}) of revelation. Of these, 564 (91.0%) received a VoA response and were thus judged to be accurate. The 84 recognition responses occurring in step 8 (VoA) were not scored because the pictures were by then fully revealed, and recognition and VoA occurred simultaneously. The distribution of responses was examined by binning recognition times (RTs) on correct trials at 2 s intervals, time-locked to the acquisition of a whole-brain fMRI volume. Binning produced 7 categories of response, each associated with a step of revelation (T_{R1-7}). As shown in Figure 1b, most correct responses occurred in T_{R4-7} .

Experiment 2

In Exp2 ($n = 13$), 985 of 1148 trials received a recognition response prior to VoA. Of these, 852 (86.5%) received a later VoA response. The distribution of binned correct trials was quite similar to the distribution from Exp1 (Fig. 1c), with 157, 156, 247, and 204 in T_R 4-7, respectively. Data from the two studies demonstrate that gradual revelation produced significant spread in recognition times.

Imaging Results

Experiment 1

To identify regions involved in perceptual recognition, but not motor execution, T_R and VoA events were compared using a repeated measures ANOVA (see Methods). This analysis revealed significant differences ($p < .0001$, uncorrected) between recognition and VoA activity in many regions including bilateral calcarine sulcus, cuneus (posterior occipital), precuneus, inferior temporal cortex (IT), posterior parietal lobes (PPL), anterior insula near the frontal operculum (aI/fO), striatum, dorsal anterior cingulate cortex (dACC), medial frontal gyrus near the pre-SMA (meFG/pre-SMA), and dorsolateral prefrontal cortex (see Tables 1-4). From this map, we derived regions of interest around peak voxels (10 mm radius, 10 mm consolidation distance between peaks) and masked out voxels that failed to pass multiple comparison and sphericity corrections (see Methods). This procedure produced 73 ROIs (Fig. 4, middle panel; Tables 1-4), which were then used in Exp2 to examine the evolution of T_R -dependent BOLD activity during non-jittered revelation.

Experiment 2

Predictions

Based on basic principles of linear systems, including scaling (output magnitude is proportional with input magnitude) and superposition (total response to multiple inputs equals the sum of the responses), we hypothesized that various cognitive events could influence the shape of the evolving BOLD signal. These events include sensory processing, evidence accumulation, recognition decisions, verification decisions and overt behavior. Because stimuli were revealed gradually from under a black mask, the amount of stimulus information increased at regular intervals throughout the trial. Accordingly, in visual processing areas which process basic stimulus features, the BOLD signal should begin to increase early in the trial and continue to increase as the stimulus is revealed. Thus, as shown in Fig. 2a, the width of the timecourse profile in *sensory processing* areas should correspond to trial duration (16 s). In contrast, the neurophysiological findings (Kim and Shadlen, 1999; Shadlen and Newsome, 2001) predict that activity in *accumulation* regions will begin early in the trial and continue to increase at a T_R -dependent rate. For instance, recognition at T_{R4} should be associated with a more rapid increase in activity than recognition in T_{R7} (Fig. 2b). Based on the findings reported in the literature, we may find accumulating patterns of activity in parietal and frontal areas. Given the task demands, we may also find task-specific ROIs that are important in visual object processing. BOLD responses associated with processes engaged at the *moment of recognition* should also vary according to T_R . Because the moment of recognition is a discrete event, responses should occur transiently at T_R (Fig. 2c). A large body of literature on decision making (e.g., Bush et al., 2002; Carlson et al., 2006; Grinband et al., 2006; Hampton and O'Doherty, 2007; Thielscher and Pessoa, 2007) implicates anterior cingulate and frontal opercular regions in this type of

processing. Accordingly, we hypothesize that these regions will be recruited at the moment of recognition. Although the timecourse profile predictions are derived from theoretical accounts and empirical findings, we note that BOLD responses need not necessarily show these specific timecourse patterns because some regions may show combinations of such responses (i.e., both accumulator and moment of recognition patterns, which would preclude dissociation), or show responses not otherwise considered a priori.

According to these expectations, the pattern of activity associated with accumulation and the moment of recognition should have some similarity. For example, because accumulation and recognition are inherently associated with T_R , the time to peak activity for both should shift in time as a function of T_R . However, as illustrated in Fig. 2b - 2c, they should differ in two important ways. First, because of a role in integrating information over time, BOLD responses associated with accumulation should increase as soon as information related to a decision becomes available (e.g., earlier onset; Fig. 2b). In contrast, the onset of activity associated with the moment of recognition should shift later in time depending on T_R (Fig. 2c). Second, because evidence gathering is a prolonged process, timecourses associated with accumulation should be more extended in time (i.e., greater width), albeit showing narrower widths than regions related to visual processing. Combined, these two predictions further predict that in accumulation (but not moment of recognition) ROIs the slope of the leading edge of the BOLD response will decrease as T_R increases. It is important to emphasize that, despite the preceding hypotheses describing event-dependent time course shapes, we did not explicitly model the shape of the hemodynamic response.

Hierarchical Cluster Analysis

From the 73 Exp1 ROIs, we extracted T_R -dependent timecourses from the Exp2 trials in

Evidence accumulation and the moment of recognition

which recognition occurred during revelation steps 4-7. We wanted to characterize the similarities and differences in patterns of timecourses across a large set of ROIs, so we began sorting the data using a hierarchical cluster analysis (See Methods). Fig. 3a displays the relationships among the 73 ROIs using a cluster tree (dendrogram). Regions with similar patterns of timecourse are clustered more closely than regions with different patterns. Pruning the cluster tree at $1 - r = 0.8$ produced four clusters, each associated with a distinct pattern of timecourse when averaged over all ROIs in a cluster (Fig. 3b-e; Tables 1-4). A large cluster of regions located in medial parietal (precuneus) cortex, superior temporal gyrus, posterior insula, medial frontal cortex, and lateral parietal lobes exhibited *negative* timecourses that tended to peak in step with T_R (Fig. 3b; Table 1). A cluster of 7 ROIs located in bilateral posterior occipital cortex, lingual gyrus, and left parahippocampal gyrus displayed an initial decrease in activity, followed by a prominent increase near the end of the time series (*late positive*; Fig. 3c, Table 2). A third cluster included ROIs near left middle frontal gyrus (~BA 6), PPL, and middle temporal gyrus, and a subset of the ROIs found in bilateral ACC (BA 32, 24). These regions displayed a *bimodal* response, with an initial positive response that corresponded with T_R and a secondary positive response near the end of the time series (Fig. 3d, Table 3). The fourth and largest cluster displayed *positive* responses that, as a group, suggested increased activity at a rate corresponding with T_R (Fig. 3e Table 4). These ROIs were located in bilateral dlPFC (~BA 47, 46), ACC (BA 32), IT (including fusiform gyrus; BA 37, 20), PPL (BA 40, 7), cuneus/posterior occipital (BA 18), striatum, thalamus and cerebellum, and represent the target of our further analyses.

Fig. 4 shows representative timecourses from six ROIs: a) left ventral cuneus near BA 17 (Talairach atlas $z = -19$, $y = -99$, $z = 2$), b) left IT near BA 37 (-42 , -63 , -9), c) middle occipital gyrus near BA 18 (-1 , -83 , $+25$), d) precuneus near BA 7 (2 , -60 , 37), e) meFG/pre-SMA near

BA 32 (-1, 14, 51), and f) right aI/fO (33, 22, -2). The plotted time series extend over 16 frames of image acquisition (32 s) and are shaded according to T_R . Even in individual ROIs, there were clear time course patterns evident in the large positive cluster (Table 4). For example, early visual processing areas displayed an early onset of BOLD signal change, followed by a gradual increase in activity that extended to the end of the trial (e.g., left ventral cuneus near BA 17, Fig. 4a). In these regions, activity corresponded mostly with the amount of visual information on the screen. This type of response is consistent with a ‘sensory processor’ (Fig. 2a) that processes basic sensory information but may not contribute directly to higher order recognition analysis. In other regions with an early onset, the peak in activity shifted with T_R . This set included ROIs in bilateral PPL, precuneus, middle occipital gyrus (MOG), left IT (Fig. 4b) and bilateral dlPFC (Table 4). This pattern of accumulation is consistent with the predicted behavior of an evidence accumulator (Fig. 2b) that integrates information over time. In contrast, BOLD responses in bilateral aI/fO (Fig. 4f), dorsal ACC, meFG/pre-SMA (Fig. 4e), and thalamus were markedly more transient, with onsets and peaks that appeared to correlate positively with T_R . Activity in these regions appeared to be most directly related to processes engaged at the time of recognition. As noted earlier, the cluster analysis identified two patterns of negative response. For example, ROIs near the lingual gyrus and cuneus (~BA 19; Fig. 4c) showed an initial decrease in activity followed by a marked increase near the end of the trial. In other regions near the angular gyrus and the precuneus (Fig. 4d), activity appeared to decrease at a rate corresponding with T_R . Due to space considerations, we will focus on the positive responses.

Linear Interpolation of BOLD responses

We next investigated time course patterns from the positive-going cluster (Fig. 3e) by quantifying onset, peak, and full width at half maximum (FWHM) for each of the 32 ROIs. Our

Evidence accumulation and the moment of recognition

predictions across levels of T_R for sensory processors, accumulators, and moment of recognition ROIs are displayed in Figure 2. To objectively classify ROI behavior based on these attributes, we entered the onset, peak, and FWHM values into a second hierarchical cluster analysis. Thus, in contrast to the previous cluster analysis (Fig. 3) where we correlated the timecourses between ROIs, the goal of the second cluster analysis was to correlate interpolation parameters in the 32 positive ROIs. Interpolation data for each ROI took the form of a 1 x 12 vector representing the four onset points (T_{R4-7}), four peaks (T_{R4-7}) and four width values (T_{R4-7}). For reference, we also included the idealized values for each predicted response type displayed in Figure 2. The results of the second cluster analysis are displayed in Fig. 5, with idealized parameters labeled “accumulator”, “sensory”, and “recognition”. The 32 ROIs clustered into three distinct groups containing 14, 5, and 13 ROIs (not including the three idealized value sets). Within each group, some ROIs clustered quite closely with the idealized parameters. For example, regions in medial occipital cortex (~BA 17/18) clustered closely with the idealized sensory processing parameters (Fig. 5a, red). Responses in occipital and fusiform ROIs clustered quite closely with the idealized accumulator parameters (Fig. 5a, blue). Regions in medial frontal gyrus (meFG) (~BA 6), ACC (~BA 8, 32), right inferior parietal cortex (~BA 40), right IFG (~BA 47) and right inferior precentral gyrus (~BA 44) clustered tightly with the idealized moment of recognition parameters (Fig 5a, green). A number of other ROIs, however, were associated with parameter differences that led to greater cluster distances. For example, ROIs in frontal and parietal cortex displayed response parameters similar to the idealized accumulator, but tended to have larger fwhm values than our ideal predictions. Despite these differences, the values in moment of recognition ROIs were clearly distinct from the accumulator and sensory processing ROIs. The parameter values for onset, peak, and width are plotted in Figure 5b-d as a function of T_R , averaged over all ROIs

in each of the three clusters.

Figures 6, 7 and 8 (b-d) show the interpolation values for each ROI in the three main interpolation clusters, as well as the average values represented by a thicker black line for reference (which are also shown in Fig. 5b-d). Onset times in sensory ROIs (Fig. 6b) changed little across T_R 4-7 (mean = 5.5, 5.2, 4.8, 5.2 sec, respectively, across ROIs within the cluster), while onset times in accumulator ROIs (Fig. 7b) increased slightly (7.1, 7.0, 8.2, 8.6 sec). In recognition ROIs, onset times (Fig. 8b) increased markedly as T_R increased (8.5, 12.0, 13.3, 14.3 sec). Peak times tended to increase in all three region types (Fig. 6-8c), with steeper increases in accumulator (14.8, 16.5, 18.3, 20.0 sec) and recognition (14.2, 16.3, 18.3, 20.2 sec) ROIs than sensory (15.6, 17.6, 17.6, 18.8 sec) ROIs. Sensory ROIs were associated with the widest response profiles across levels of T_R (Fig. 6d; 15.7, 15.2, 14.6, 15.3 sec), followed by accumulator (Fig. 7d; 11.3, 11.0, 10.2, 9.2 sec) and recognition (Fig. 8d; 7.1, 4.8, 5.7, 5.4 sec) ROIs. All in all, the regions that make up each category deviated little from the average line.

To test our hypotheses about differences in onset times, peak times, and response width between the three main clusters, we entered the corresponding values for each ROI into three sets of repeated measures ANOVAs (using SPSS, SPSS, Inc., Chicago, IL) with four levels of the repeated measure T_R (4, 5, 6, 7). In the first analysis in the set, we tested for differences in onset, peak, and width across region grouping by including three levels of the between factor region type (sensory, accumulator, recognition). In the second analysis of the set, when warranted by significant effects in the first, we directly contrasted region groups by including only two levels of the between factor region type and testing each unique combination (sensory, accumulator; sensory, recognition; and accumulator, recognition) in three separate ANOVAs. The second set of analyses investigated the source of significant effects in the first analysis by making pairwise

comparisons of repeated measures models. In the third set we tested the degree to which onset and peak values followed a linear trend across T_R by computing three 1×4 repeated measures ANOVAs and including a polynomial trend analysis. In these analyses, the main effect of T_R determines the reliability by which T_R values differ across levels of T_R , while the trend analysis determines whether that change is linear. All F- and p- values of repeated measures incorporate the Greenhouse-Geisser sphericity correction to adjust the degrees of freedom.

Onset Times

The 3×4 ANOVA of onset times with the three region groups revealed a significant main effect of T_R ($F[2.5, 73.4] = 14.47, p < .0001$) and a significant interaction of T_R with region type ($F[5.1, 73.4] = 10.91, p < .0001$), indicating that across regions the onset times differed over levels of T_R , and this effect was modified by region type. The main effect of the between-factor region type was also significant ($F[2, 29] = 31.91, p < .0001$). To identify the source of the interaction, we next computed three 2×4 ANOVAs on each unique combination of the three ROI types. All three ANOVAs revealed an interaction of region type with T_R (all $p < .05$), indicating that the observed rates of increasing onset values across T_{R4-7} (recognition > accumulator > sensory) differed significantly between the three region types.

Next, we computed a separate 1×4 repeated measures ANOVA on each region type to determine whether the change in onset times followed a linear trend across levels of T_R . According to these analyses, onset values at different T_R s did not differ in sensory ROIs ($F[1.3, 5.4] = 1.67, p = 0.26$) and did not reliably follow a linear trend across T_{R4-7} ($F[1, 4] = 1.04, p = 0.37$). In contrast, onset values differed significantly across levels of T_R in accumulator ($F[2.3, 28.1] = 5.93, p = .01$) and recognition ($F[2.0, 26.1] = 33.51, p < .0001$) ROIs. Both of the latter region types also showed significant linear trends (accumulator: $F[1, 12] = 13.39, p < .0001$;

recognition: $F[1, 13] = 75.37, p < .0001$), indicating that the onset values increased significantly and linearly as T_R increased.

Combined, the three sets of analyses indicate that onset times increased linearly in accumulator and recognition, but not sensory, ROIs. Furthermore, in accumulator and recognition ROI types, the increase in onset times across levels of T_R differed reliably. Thus, the increasing onset values observed in recognition ROIs was greater than the accumulation ROI values.

Peak Times

To determine whether peak values changed reliably as a function of T_R , we next performed the same set of analyses on interpolated peak times. The 3×4 ANOVA with three levels of region type revealed a significant main effect of T_R ($F[2.8, 81.0] = 225.62, p < .0001$) and an interaction of T_R with region type ($F[5.6, 81.0] = 8.06, p < .0001$), indicating that peak times increased significantly as a function of T_R and that this effect was modified by region type. To explore the source of these differences we next computed three 2×4 ANOVAs, each with two levels of region type. In these analyses, interactions of T_R with region type indicated that the change in peak values over T_{R4-7} in sensory ROIs differed from accumulator ($F[2.6, 41.1] = 9.64, p < .0001$) and recognition ($F[2.2, 38.0] = 17.59, p < .0001$) ROIs. However, there was no difference in peak values over T_{R4-7} between accumulator and recognition ROIs ($F[2.7, 67.6] = 1.46, p = .23$). Thus, increases in time to peak values were greater in accumulator and recognition ROIs than in sensory ROIs. In all three ROI types, the main effect of T_R in the 1×4 ANOVAs was significant (all $p < .01$) and all showed a significant linear trend (all $p < .01$). Peak times increased as a function of T_R in all three region types. The 2×4 analyses indicated that the rate of increase in the sensory ROI group was significantly less than in accumulator and

recognition ROI groups.

BOLD Response Width

To test the hypothesis that response widths would be greatest in sensory ROIs, least in recognition ROIs, and intermediate in accumulator ROIs, we first entered the FWHM values into a 3 x 4 ANOVA (describe above). A significant main effect of T_R ($F[2.0, 58.4] = 4.50, p < .05$) and a nonsignificant interaction of T_R with region type ($F[4.0, 58.4] = 1.96, p = .11$) indicated that width values differed across levels of T_R but not as a function of region type. However, a significant main effect of the between-factor region type ($F[2, 29] = 90.48, p < .0001$) revealed a highly reliable difference in widths between regions. Because the interaction was not significant, we did not perform the 2 x 4 regionwise analyses that were conducted on the onset and peak data. Finally, the 1 x 4 ANOVAs revealed no significant main effect of T_R in the sensory ROI group ($F[1.1, 4.3] = 0.32, p = .62$), and a significant main effect in the accumulator ($F[1.6, 19.0] = 7.00, p < .01$) and recognition ($F[1.5, 19.0] = 4.86, p < .05$) ROI groups. Only the accumulator group showed significant linear trends in width values across levels of T_R ($F[1, 12] = 11.41, p < .01$). The principle result from this analysis was that response widths, which were greatest for sensory ROIs, least for recognition ROIs, and intermediate for accumulator ROIs, differed significantly across region type.

Slope Analysis

We used the onset and peak times to also determine whether the slopes of the leading edge of BOLD response changed as a function of T_R . Leading edge slopes were computed as follows: $(SC_P - SC_{ON}) / (T_P - T_{ON})$ where SC = percent signal change, T = time (sec), P = peak, and ON = onset. Specifically, we hypothesized that in accumulators the slope of the leading edge

would decrease as decision time increased. To test this hypothesis, we entered slope values from accumulator ROIs (T_R 4-7 means: 0.13, 0.11, 0.10, 0.10) into a single factor repeated measures (T_R 4-7) ANOVA and included a linear trend analysis to determine whether slope values changed linearly across levels of T_R . This analysis revealed a main effect of T_R ($F[2.1, 25.7] = 6.15$, $p < .01$) and a significant linear trend ($F[1, 12] = 8.91$, $p < .05$). The same analysis on data from recognition ROIs (T_R 4-7 means: 0.10, 0.13, 0.10, 0.13) revealed neither a main effect of T_R ($F[1.9, 24.6] = 1.28$, $p = 0.29$) nor a significant linear trend ($F[1, 13] = 0.57$, $p = 0.46$).

Atypical responses

While the ROIs clustered into three distinct categories that were broadly consistent with our predicted profiles, some ROIs did not cluster as tightly with the idealized response as others. For example, in two ‘accumulator’ ROIs located in left cerebellum (Fig. S1a, top panel), activity increased rapidly and independently of T_R , but then displayed a more gradual increase that was T_R -dependent (Fig. S1b). In ROIs located near the right supramarginal gyrus (+34, -57, +47), right posterior parietal lobe (+49, -48, +47), right inferior precentral gyrus near frontal operculum (+51, +15, +07) and right posterior inferior frontal gyrus (+45, +14, -03; Fig. S1a, bottom panel), activity increases occurred relatively late in the trial (Fig. S1c). The late response suggests that these regions may be more involved in processing occurring at VoA than at T_R . In addition, ROIs in or near bilateral striatum (-11, +07, +05; +12, +06, +03), near the head of the caudate nucleus, clustered broadly into the recognition group. However, their timecourse parameters were least similar to other ROIs in the group (Fig. S2).

Motor analysis

To determine the shape of the BOLD response associated with motor events, we

Evidence accumulation and the moment of recognition

extracted timecourses from two sensorimotor regions encompassing pre- and post-central gyri. Results are shown in Figure S3. The timecourses associated with T_{R4-5} were bimodal, indicative of separate motor responses occurring at recognition and again at VoA. The timecourse profiles for T_{R6-7} were wider, most likely reflecting the fact that perceptual recognition decisions and VoA occurred closely enough in time that the BOLD responses were summated. In motor areas, T_{R4-5} timecourses displayed a clear bimodal pattern in which the initial peak was associated with T_R and the second peak with VoA. This pattern of activity differed substantially from the patterns observed in the positive waveform cluster. We conclude from these data that the procedure used to identify ROIs by comparing T_R with VoA factored out motor processing to a reasonable degree.

Discussion

The decision process involves analysis of sensory input, gathering of evidence toward behavioral options, and a later process that allows the selection of a contextually relevant behavior and the evaluation of its appropriateness. We present data indicating that neural mechanisms supporting perceptual recognition decisions can be dissociated using fMRI. These include 1) sensory processors in which activity reflects the quantity of stimulus information entering the system, 2) accumulators that may reflect the gathering of information used in making the decision, and 3) a set of processors that are clearly engaged at, but not before, the time of recognition. Overall, the results help define a hierarchy of neural mechanisms involved in sorting inputs, gathering evidence, and deciding and monitoring an appropriate course of action. In addition, they demonstrate that accumulation processes can be identified using fMRI as dynamically evolving signals.

Sensory Processing

During stimulus revelation, activity in posterior occipital regions initially increased monotonically as a function of the amount of visual information entering the system. Activity in some sensory processors also appeared to vary modestly with T_R , as evidenced by peak latencies that shifted positively with T_R (Figs. 4a, 5c). It appears that T_R may have been influenced somewhat by bottom-up stimulus-specific differences in the amount or type of stimulus information available throughout the revelation process. That is, some objects may have been identified earlier in the trial because more critically identifiable features were unmasked earlier. For example, certain visible elements (e.g., geons) provide a higher degree of object level information than straight lines (Biederman, 1987). If true, then T_R -dependent activity in late visual processing areas could have depended on differences in lower level feature extraction in early visual areas. The Exp2 behavioral data support this alternative because recognition times for some items tended to be consistent across subjects (see supplementary text online).

Accumulation

Regions demonstrating accumulation may compute decision variables, such that the quantity of accrued activity is associated with decision outcome. We found accumulator patterns of response in ROIs in bilateral occipital lobes, fusiform gyrus near LOC (Kourtzi and Kanwisher, 2001), dorsal meFG, dlPFC, and PPL (Fig. 7). The pattern of T_R -dependent accumulation of BOLD activity observed in these regions is consistent with the buildup of neural activity found in studies of non-human primates making perceptual decisions (Hanes and Schall, 1996; Kim and Shadlen, 1999; Platt and Glimcher, 1999; Shadlen and Newsome, 2001; Ratcliff et al., 2003). Interestingly, in an fMRI study with human participants, Kleinschmidt and colleagues (Kleinschmidt et al., 2002) used a perceptual task capable of inducing hysteresis and

Evidence accumulation and the moment of recognition

found right lateralized frontal and parietal, and bilateral occipital/temporal areas in which activity increases were related to a perceptual pop-out effect of letter stimuli. The data are also reminiscent of a diffusion process. For example, in Ratcliff's two-choice diffusion model (Ratcliff, 1978; Ratcliff et al., 2004), evidence is accumulated in a drift parameter and decisions are generated when the value of the drift parameter surpasses a response boundary. The level of activity in the accumulator regions may thus reflect neuronal processing relevant to the recognition decision. For instance, when recognition occurred early in the trial, the leading edge of activity followed a steep slope. As recognition time increased, however, the slope became shallower, suggesting a longer diffusion process. Ultimately, perceptual recognition may occur when activity in one or more accumulators surpasses a response threshold. Because we could not perform trial-level analyses, the findings are too broad to test the veracity of different accumulator models. We note the relationship, instead, to build a conceptual link between the current findings and theoretical accounts of decision making.

It seems plausible that component processes related to analysis of visual features and semantic knowledge could contribute to a pattern of accumulation. Thus, the degree to which the T_R -dependent buildup in activity reflects 'evidence accumulation' *per se* is not clear from the data. For example, rather than supporting the presence of an integrative mechanism, it is possible that accumulating activity is a mere byproduct of information processing. Accordingly, the level of activity could be consequence of the timing by which neurons are recruited during the task. In our view, however, the tight coupling of the rate of activity buildup and T_R in our data and in single unit studies in non-human primates (Kim and Shadlen, 1999; Shadlen and Newsome, 2001) suggests that a purely epiphenomenal account is unlikely. However, further experiments are needed to test the content- and task-specificity of accumulation to the decision making

process.

It is worth noting that some parietal regions displaying accumulation responses are near parietal ‘retrieval success’ regions identified in episodic memory studies using old/new recognition and source memory tasks (Habib and Lepage, 1999; Konishi et al., 2000; McDermott et al., 2000; Donaldson et al., 2001a; Donaldson et al., 2001b; Wheeler and Buckner, 2003, 2004). For example, a region near the IPS (e.g., -26, -68, 38) demonstrated an accumulator pattern of response. Several studies of recognition memory have reported that IPS and precuneus are most active when participants respond “old” and least active when they respond “new”, independently of accuracy (Wheeler and Buckner, 2003; Kahn et al., 2004). The association between the decision outcome and level of BOLD signal suggests that the memory decision may have been based on a simple threshold mechanism. This finding has raised the possibility that in memory tasks the function of such regions is to accumulate and maintain relevant mnemonic information over time. The current data show that activity in IPS gradually accumulates until the moment of object identification, and thus suggest a more domain-general integrative mechanism supporting episodic recognition and perceptual identification.

Recognition Decision

Activity in a large number of regions, including bilateral thalamus, meFG/pre-SMA, dorsal ACC, and aI/fO was tightly coupled to the time of recognition (Fig. 8). The precise role of meFG/pre-SMA is unclear, though its function does not appear to be directly related to action planning or execution (Picard and Strick, 2001). The absence of a clear response at VoA supports this view because the motor demand at VoA did not produce a marked change in signal in meFG/pre-SMA. In contrast, in motor ROIs we observed a transient change in BOLD signal at both recognition and VoA (Figure S3). The ACC, and more recently the aI/fO, have both been

Evidence accumulation and the moment of recognition

associated with aspects of decision making, including choice (Hampton and O'Doherty, 2007; Thielscher and Pessoa, 2007), error detection (Dehaene et al., 1994), error likelihood (Brown and Braver, 2005), reward evaluation (Rogers et al., 1999; Sanfey et al., 2003), attention for action (Posner et al., 1988; Posner and Petersen, 1990; Bush et al., 1998), response conflict/competition (Bush et al., 1998; Botvinick et al., 1999; Botvinick et al., 2001), confidence (Fleck et al., 2006), and uncertainty (Grinband et al., 2006). The current results do not directly differentiate among these possibilities, but do temporally dissociate processes occurring at the moment of recognition and the subsequent verification of that recognition.

The current work extends previous research findings by demonstrating that regions in pre-SMA, ACC, aI/fO, and thalamus show strong activity to cognitive events that arise at, but not before, the moment of recognition. However, they do not appear to be explicitly linked to the decision process. Aside from the recognition decision, a verification decision was made at the VoA response. If these ROIs were obligatorily involved in decision making, then they should display a bimodal timecourse, the first peak time-locked with T_R and the second associated with VoA (see Figs. 3d and S3). Instead, it appears that activity in areas recruited at the moment of recognition reflects contingencies regarding their recruitment; these regions were clearly more involved at the time of recognition than at the time of verification. Further, it has been hypothesized that several of these regions play a role in error detection (Dehaene et al., 1994). Error trials (not presented) were associated with significantly greater T_R -dependent activity than correct trials in the moment of recognition ROIs. However, a pure error detection hypothesis is not supported by the current data because T_R -dependent BOLD responses were clearly evident on correct trials. Instead, errors appear to modulate other processing occurring in these areas.

Summary

The overall pattern of data suggests a hierarchical framework of neural mechanisms that is recruited during decision making. In this framework, information processing proceeds through sensory processing and evidence accumulation to decision mechanisms, and culminates in a behavior. Presumably, this process begins with the task-level assignment of setting decision criteria and includes post-decision monitoring. Despite the finding presented here, the precise functional relationship between accumulators and moment-of-recognition areas is unknown. For example, it is unclear whether decisions arise from information processed in accumulators, or in regions active at the moment of recognition (or elsewhere). Future research on task-specificity may be informative in determining if and how accumulating information is interpreted by decision mechanisms, whether they are task-specific or task-general, and how decisions are reached and enacted.

Evidence accumulation and the moment of recognition

Figure 1. Task design and behavioral results. **a)** The schematic illustrates the task design. In Exp2, revelation proceeded every 2 s until the object was revealed at the 8th and final step (14 s). In Exp1 (not depicted), jitter occurred during revelation. Subjects pressed a button when they could identify the picture with a reasonable degree of confidence, and again at VoA if earlier recognition had been correct. ITIs (jitter) varied from 2-6 s. Revelation steps are numbered (1-8). **b-c)** Distribution of T_{RS} for Experiments 1 and 2, in 2 s bins. The total number of responses (s.d. bars) are plotted as a function of the step of revelation. In Exp1, recognition responses were collapsed to identify ROIs. In Exp2, bins were analyzed separately to identify time-dependent differences in BOLD fMRI activity. **c)** The levels of shading represent the four main conditions of interest in Exp2 imaging analyses.

Figure 2. Idealized timecourse patterns in Exp2 related to **a)** sensory processing, **b)** accumulation, and **c)** moment of recognition processing. The graphs to the left depict time-dependent signal change (arbitrary units) in perceptual recognition at four different, successive, T_{RS} (T_{R4-7}). **a)** In sensory areas, onset, peak, and FWHM were not expected to vary as a function of T_R . **b)** Because evidence gathering should begin when information becomes available, only time-to-peak in activity was expected to vary with T_R in accumulators. **c)** Both onset and peak times should vary in moment of recognition regions that become active at the time of recognition. This late, discrete response should produce a narrow timecourse.

Figure 3. Cluster tree and averaged T_R -dependent timecourses. **a)** The cluster tree displays the similarity of timecourses across ROIs in terms of a distance unit ($1 - r$). ROIs are listed along the y-axis and labeled according to atlas coordinate (cross-reference with Tables 1-4). ROIs linked

across greater distances on the x-axis exhibited more disparate timecourses. As $1 - r$ values approach 0, timecourse similarity increases. As $1 - r$ increases above +1.00, timecourses become negatively correlated. The vertical dashed line shows where pruning the tree at $1 - r = 0.80$ separated the tree into 4 major clusters. The cophenetic correlation coefficient was 0.8234, suggesting very little distortion in the data in order to construct the tree. **b-e**) Timecourses for T_{R4-7} are averaged across all ROIs in each major subcluster, and across graphs the timecourses are color-coded by cluster membership and are graphed, in units of percent signal change from baseline (0%; horizontal dashed line), as a function of time.

Figure 4. Select regions of interest and their timecourse data. Regions of interest from Exp1 are shown near center, color-coded by Exp2 cluster membership at $1 - r = 0.8$ (see Fig. 3). ROIs are displayed in horizontal slices over the top of the anatomical template used in stereotaxic atlas transformation. Difference in mm from AC-PC is noted below each slice. In **a-f**, timecourses for T_{R4-7} are graphed, in units of percent signal change from baseline (0%), as a function of time. Timecourses are color-coded according to the legend. T_{R1} began at 0 s. The onsets of steps 4-7 are denoted by different bar colors on the x-axis, as denoted by the legend. Step 8 (VoA), which began at 14 s, is denoted by a black bar on the x-axis. The marker for VoA is for reference only. **a**) left ventral cuneus (peak voxel coordinate, -19, -99, +2), **b**) left IT (-42, -63, -9), **c**) left cuneus (-1, -83, +25), **d**) right precuneus (+2, -60, +37), **e**) meFG/pre-SMA (-1, +14, +51), **f**) right aI/fO (+33, +22, -2).

Figure 5. Hierarchical cluster analysis of interpolation data. Each of the 32 ROIs from the positive waveform cluster were subjected to interpolation analysis that defined each region's

Evidence accumulation and the moment of recognition

onset point, peak, and width. **a)** Cluster tree representing the three categories of regions based on the predicted outcomes from Figure 2. (Red = Sensory Processors; Blue = Accumulators; Green = Recognition Regions). The cluster was cut at a 1-r value of 0.2 to allow for each region to belong to a distinct cluster. The ideal values from Figure 2 were also placed into the correlation matrix in order to determine which of the 32 regions clustered near to or far from these hypothesized categories. **b-d)** Mean interpolation values for each of the three sets of regions identified in the cluster analysis separated by onset point, peak, and width. Bars represent standard error of the mean (SEM). Note that the slope of increasing peak times (5c) in sensory ROIs differed significantly from accumulation and recognition ROIs.

Figure 6. Interpolation analysis, sensory processors. **a)** time courses for five sensory ROIs identified by the interpolation analysis. Time courses are shaded by T_R (see Fig. 4 caption). **b-d)** The data for each sensory region is shown in red and the mean of those values is indicated by a thick black line for onset, peak, and width **e)** The ROIs are shown projected onto inflated cortical surfaces of left and right hemispheres. L = left; R = right; Post. = posterior; T_R = step in which recognition occurred.

Figure 7. Interpolation analysis, accumulators. **a)** time courses for thirteen accumulator ROIs identified by the interpolation analysis. Time courses are shaded by T_R (see Fig. 4 caption). **b-d)** The data for each accumulator region is shown in blue and the mean of those values is indicated by a thick black line for onset, peak, and width. **e)** ROIs are projected onto posterior and lateral views of inflated cortical surfaces.

Figure 8. Interpolation analysis, moment of recognition areas. **a)** time courses for fourteen recognition ROIs identified by the interpolation analysis. Time courses are shaded by T_R (see Fig. 4 caption). **b-d)** The data for each recognition region is shown in green and the mean of those values is indicated by a thick black line for onset, peak, and width. **e)** ROIs are projected onto inflated cortical surfaces.

Figure S1. **a)** ROIs for two accumulator (blue) and four recognition (green) regions showing relatively late onsets are projected onto inflated cerebellar and cortical surfaces. Cerebellum (top) is shown from a posterior view and right hemisphere (bottom) from a lateral view. **b)** Timecourses for T_{R4-7} , averaged across the two ‘late accumulator’ ROIs, are plotted as a function of time. **c)** Timecourses for T_{R4-7} , averaged across the four ‘late recognition’ (green) ROIs are plotted. See Fig. 4 caption for details.

Figure S2. T_R -dependent timecourses from left and right striatum (~head of the caudate) are plotted separately. While these regions clustered with recognition regions (Figure 5), they were located further away from the predicted idealized parameters than the other regions. Thus, while the interpolation parameters were somewhat consistent with other recognition regions, from a qualitative standpoint regions such as these produced noisier timecourses than others that clustered nearer to the predicted idealized parameters.

Figure S3. Region of interest in bilateral sensorimotor cortex is depicted to the right, overlaid onto a horizontal slice of the template anatomy at Talairach $z = 58$. Details are as per Fig. 4. The shaded area represents the time window in which a transient BOLD response in VoA should

Evidence accumulation and the moment of recognition

occur, assuming a ~2 sec delay in onset.

Table 1. Peak locations and coordinates for ROIs belonging to the negative waveform cluster.

Anatomic Location	~BA	X	Y	Z
1. L Paracentral Lobule	6	-1	-32	58
2. R Middle Frontal Gyrus	6	24	-7	59
3. R Posterior Cingulate	31	15	-43	40
4. R Superior Temporal Gyrus	41	38	-34	17
5. R Superior Temporal Gyrus	22	57	-8	7
6. R Superior Temporal Gyrus	42	54	-31	15
7. R Posterior Insula	13	47	-18	15
8. L Superior Temporal Gyrus	41	-55	-20	8
9. L Posterior Insula	13	-39	-21	12
10. L Superior Temporal Gyrus	42	-55	-33	11
11. L Superior Temporal Gyrus	41	-42	-36	11
12. R Precuneus	7	11	-46	51
13. L Middle Temporal Gyrus	39	-51	-62	27
14. R Superior Parietal Lobule	7	28	-47	61
15. L Posterior Cingulate	31	-14	-39	39
16. L Precuneus	31	-9	-56	34
17. R Precuneus	7	8	-52	61
18. L Precuneus	7	-12	-47	51
19. L Precuneus	7	-8	-61	61
20. L Precuneus	7	-1	-46	56
21. R Anterior Cingulate	32	4	46	-03

Evidence accumulation and the moment of recognition

Table 1 (cont)

Anatomic Location	~BA	X	Y	Z
22. R Cingulate Gyrus	31	7	-47	27
23. L Precuneus	7	-1	-59	53
24. R Precuneus (4d)	7	2	-60	37

Notes. L = left; R = right; ~BA = approximate Brodmann's area; X, Y, Z = atlas coordinate dimensions; ROI order follows cluster tree displayed in Fig. 3. Text in parentheses refers to Figure 4. Anatomic locations are approximate.

Table 2. Peak locations and coordinates for ROIs belonging to the late positive waveform cluster.

Anatomic Location	~BA	X	Y	Z
25. R Cuneus	18	14	-82	28
26. L Cuneus (4c)	18	-1	-83	25
27. R Parahippocampal Gyrus	19	17	-52	-4
28. L Lingual Gyrus	19	-16	-57	-2
29. L Lingual Gyrus	18	-9	-68	2
30. R Cuneus	30	11	-69	10
31. L Cuneus	17	-5	-77	13

Notes. L = left; R = right; ~BA = approximate Brodmann’s area; X, Y, Z = atlas coordinate dimensions; ROI order follows cluster tree displayed in Fig. 3. Text in parentheses refers to Figure 4. Anatomic locations are approximate.

Evidence accumulation and the moment of recognition

Table 3. Peak locations and coordinates for ROIs belonging to the bimodal waveform cluster.

Anatomic Location	~BA	X	Y	Z
32. L Anterior Cingulate	32/24	-10	35	14
33. L Posterior Parietal Lobe	7	-28	-44	51
34. L Postcentral Gyrus	43	-49	-11	16
35. L Cingulate Gyrus	24	0	10	31
36. L Middle Temporal Gyrus	39	-42	-74	13
37. L Cingulate Gyrus	24	-10	4	39
38. L Cingulate Gyrus	32	-9	28	27
39. R Anterior Cingulate	32	9	32	25
40. R Cerebellum	NA	11	-71	-23
41. L Middle Frontal Gyrus	6	-25	-10	55

Notes. L = left; R = right; ~BA = approximate Brodmann's area; X, Y, Z = atlas coordinate dimensions; ROI order follows cluster tree displayed in Fig. 3. Anatomic locations are approximate.

Table 4. Peak locations, coordinates, and interpolation group for ROIs belonging to the positive waveform cluster.

Anatomic Location	~BA	X	Y	Z	Interpolation Group
42. R Precentral Gyrus	44	51	15	07	Moment of recognition
43. R Inferior Frontal Gyrus	47	45	14	-03	Moment of recognition
44. R Inferior Parietal Lobule	40	49	-48	47	Moment of recognition
45. R Medial Frontal Gyrus	8	01	26	42	Moment of recognition
46. L Medial Frontal Gyrus (4e)	6	-01	14	51	Moment of recognition
47. R Anterior Cingulate	32	06	24	31	Moment of recognition
48. L Thalamus	NA	-11	-12	08	Moment of recognition
49. R Thalamus	NA	11	-13	09	Moment of recognition
50. L Striatum	NA	-11	07	05	Moment of recognition
51. R Striatum	NA	12	06	03	Moment of recognition
52. L Inferior Frontal Gyrus	47	-42	19	01	Moment of recognition
53. R Anterior Insula (4f)	13	33	22	-02	Moment of recognition
54. L Anterior Insula	13	-32	22	01	Moment of recognition
55. R Inferior Parietal Lobule	7	34	-57	47	Moment of recognition
56. L Cerebellum	NA	-26	-79	-22	Accumulator
57. L Cerebellum	NA	-34	-72	-27	Accumulator
58. L Middle Frontal Gyrus	46	-44	28	24	Accumulator
59. L Fusiform Gyrus	20	-31	-39	-14	Accumulator
60. L Inferior Occipital Gyrus	18	-32	-89	-09	Accumulator
61. R Fusiform Gyrus	37	49	-61	-09	Accumulator

Evidence accumulation and the moment of recognition

Table 4 (continued)

Anatomic Location	~BA	X	Y	Z	Interpolation Group
62. R Middle Frontal Gyrus	46	47	32	19	Accumulator
63. L Intraparietal Sulcus	7/19	-26	-68	38	Accumulator
64. L Fusiform Gyrus (4b)	37	-42	-63	-09	Accumulator
65. R Inferior Frontal Gyrus	6/9	44	06	33	Accumulator
66. R Middle Occipital Gyrus	19	30	-78	17	Sensory Processor
67. L Middle Occipital Gyrus	19	-30	-78	21	Accumulator
68. R Superior Occipital Gyrus	19/39	31	-71	29	Accumulator
69. L Posterior Inf. Frontal Gyrus	9/6	-46	0	32	Accumulator
70. R Lingual Gyrus	17	01	-93	-06	Sensory Processor
71. L Cuneus (4a)	18	-19	-99	02	Sensory Processor
72. L Lingual Gyrus	18	-10	-99	-05	Sensory Processor
73. R Cuneus	18	16	-99	-01	Sensory Processor

Notes. L = left; R = right; ~BA = approximate Brodmann's area; X, Y, Z = atlas coordinate dimensions; ROI order follows cluster tree displayed in Fig. 3. Text in parentheses refers to Figure 4. Anatomic locations are approximate.

References

- Audley RJ, Pike AR (1965) Some stochastic models of choice. *Br J Math Stat Psychol* 18:183-192.
- Biederman I (1987) Recognition-by-components: A theory of human image understanding. *Psychol Rev* 94:115-147.
- Botvinick M, Nystrom LE, Fissell K, Carter CS, Cohen JD (1999) Conflict monitoring versus selection-for-action in anterior cingulate cortex. *Nature* 402:179-181.
- Botvinick MM, Braver TS, Barch DM, Carter CS, Cohen JD (2001) Conflict monitoring and cognitive control. *Psychol Rev* 108:624-652.
- Boynton GM, Engel SA, Glover GH, Heeger DJ (1996) Linear systems analysis of functional Magn Reson Imaging in human V1. *J Neurosci* 16:4207-4221.
- Brown JW, Braver TS (2005) Learned predictions of error likelihood in the anterior cingulate cortex. *Science* 307:1118-1121.
- Bundesen C (1990) A theory of visual attention. *Psychol Rev* 97:523-547.
- Busmeyer J (1985) Decision making under uncertainty: A comparison of simple scalability, fixed-sample, and sequential-sampling models. *J Exp Psychol Learn Mem Cogn* 11:538-564.
- Bush G, Whalen PJ, Rosen BR, Jenike MA, McInerney SC, Rauch SL (1998) The Counting Stroop: An interference task specialized for functional neuroimaging: Validation study with functional MRI. *Human Brain Mapping* 6:270-282.
- Bush G, Vogt BA, Holmes J, Dale AM, Greve D, Jenike MA, Rosen BR (2002) Dorsal anterior cingulate cortex: a role in reward-based decision making. *Proc Natl Acad Sci U S A* 99:523-528.

Evidence accumulation and the moment of recognition

Carlson T, Grol MJ, Verstraten FA (2006) Dynamics of visual recognition revealed by fMRI.

Neuroimage 32:892-905.

Cohen JD, MacWhinney B, Flatt M, Provost J (1993) PsyScope: A new graphic interactive environment for designing psychology experiments. Behavioral Research Methods, Instruments, and Computers 25:257-271.

Cook EP, Maunsell JH (2002) Dynamics of neuronal responses in macaque MT and VIP during motion detection. Nature Neuroscience 5:985-994.

Cordes D, Haughton V, Carew JD, Arfanakis K, Maravilla K (2002) Hierarchical clustering to measure connectivity in fMRI resting-state data. Magn Reson Imaging 20:305-317.

Dehaene S, Posner M, Tucker D (1994) Localization of a neural system for error detection and compensation. Psychological Science 5:303-305.

Donaldson DI, Petersen SE, Buckner RL (2001a) Dissociating memory retrieval processes using fMRI: Evidence that priming does not support recognition memory. Neuron 31:1047-1059.

Donaldson DI, Petersen SE, Ollinger JM, Buckner RL (2001b) Dissociating state and item components of recognition memory using fMRI. Neuroimage 13:129-142.

Dosenbach N, Fair D, Miezin F, Cohen A, Wenger K, Dosenbach R, Fox M, Snyder A, Vincent J, Raichle M, Schlaggar B, Petersen S (2007) Distinct brain networks for adaptive and stable task control in humans. Proc Natl Acad Sci U S A 104:11073-11078.

Eisen M, Spellman P, Brown P, Botstein D (1998) Cluster analysis and display of genome-wide expression patterns. Proc Natl Acad Sci U S A 95:14863-14868.

- Fleck MS, Daselaar SM, Dobbins IG, Cabeza R (2006) Role of prefrontal and anterior cingulate regions in decision-making processes shared by memory and nonmemory tasks. *Cereb Cortex* 16:1623-1630.
- Fox MD, Snyder AZ, Barch DM, Gusnard DA, Raichle ME (2005) Transient BOLD responses at block transitions. *Neuroimage* 28:956-966.
- Friston K, Jezzard P, Turner R (1994) Analysis of functional MRI time-series. *Human Brain Mapping* 1:153-171.
- Gold J, Shadlen M (2007) The neural basis of decision making. *Annu Rev Neurosci* 30:535-574.
- Grinband J, Hirsch J, Ferrera V (2006) A neural representation of categorization uncertainty in the human brain. *Neuron* 49:757-763.
- Habib R, Lepage M (1999) Novelty assessment in the brain. In: *Memory, Consciousness, and the Brain* (Tulving E, ed), pp 265-277. Philadelphia, PA: Psychology Press.
- Hampton AN, O'Doherty JP (2007) Decoding the neural substrates of reward-related decision making with functional MRI. *Proc Natl Acad Sci U S A* 104:1377-1382.
- Handl J, Knowles J, Kell D (2005) Computational cluster validation in post-genomic data analysis. *Bioinformatics* 21:3201-3212.
- Hanes DP, Schall JD (1996) Neural control of voluntary movement initiation. *Science* 274:427-430.
- Hanks TD, Ditterich J, Shadlen MN (2006) Microstimulation of macaque area LIP affects decision-making in a motion discrimination task. *Nature Neuroscience* 9:682-689.
- Heekeren HR, Marrett S, Bandettini PA, Ungerleider LG (2004) A general mechanism for perceptual decision-making in the human brain. *Nature* 431:859-862.

Evidence accumulation and the moment of recognition

- James T, Humphrey G, Gati J, Menon R, Goodale M (2000) The effects of visual object priming on brain activation before and after recognition. *Curr Biol* 10:1017-1024.
- Kahn I, Davachi L, Wagner AD (2004) Functional-neuroanatomic correlates of recollection: implications for models of recognition memory. *J Neurosci* 24:4172-4180.
- Kim J-N, Shadlen MN (1999) Neural correlates of a decision in the dorsolateral prefrontal cortex of the macaque. *Nature Neuroscience* 2:176-185.
- Kleinschmidt A, Buchel C, Hutton C, Friston KJ, Frackowiak RS (2002) The neural structures expressing perceptual hysteresis in visual letter recognition. *Neuron* 34:659-666.
- Konishi S, Wheeler ME, Donaldson DI, Buckner RL (2000) Neural correlates of episodic retrieval success. *Neuroimage* 12:276-286.
- Kourtzi Z, Kanwisher N (2001) Representation of perceived object shape by the human lateral occipital complex. *Science* 293:1506-1509.
- Lancaster JL, Glass TG, Lankipalli BR, Downs H, Mayberg H, Fox PT (1995) A modality-independent approach to spatial normalization of tomographic images of the human brain. *Human Brain Mapping* 3:209-223.
- Link S, Heath R (1975) A sequential theory of psychological discriminations. *Psychometrika* 40:77-105.
- Logan GD, Gordon RD (2001) Executive control of visual attention in dual-task situations. *Psychol Rev* 108:393-434.
- McDermott KB, Jones TC, Petersen SE, Lageman SK, Roediger III HL (2000) Retrieval success is accompanied by enhanced activation in anterior prefrontal cortex during recognition memory: An event-related fMRI study. *Journal of Cognitive Neuroscience* 12:965-976.

- Michelon P, Snyder AZ, Buckner RL, McAvoy M, Zacks JM (2003) Neural correlates of incongruous visual information. An event-related fMRI study. *Neuroimage* 19:1612-1626.
- Miezin F, Maccotta L, Ollinger J, Petersen S, Buckner R (2000) Characterizing the hemodynamic response: Effects of presentation rate, sampling procedure, and the possibility of ordering brain activity based on relative timing. *NeuroImage* 11:735-759.
- Nosofsky R, Palmeri T (1997) An exemplar-based random walk model of speeded classification. *Psychol Rev* 104:266-300.
- Ojemann JG, Akbudak E, Snyder AZ, McKinstry RC, Raichle ME, Conturo TE (1997) Anatomic localization and quantitative analysis of gradient refocused echo-planar fMRI susceptibility artifacts. *Neuroimage* 6:156-167.
- Ollinger JM, Shulman GL, Corbetta M (2001) Separating processes within a trial in event-related functional MRI I. The method. *Neuroimage* 13:210-217.
- Picard N, Strick P (2001) Imaging the premotor areas. *Curr Opin Neurobiol* 11:663-672.
- Platt ML, Glimcher PW (1999) Neural correlates of decision variables in parietal cortex. *Nature* 400:233-238.
- Posner MI, Petersen SE (1990) The attention system of the human brain. *Annu Rev Neurosci* 13:25-42.
- Posner MI, Petersen SE, Fox PT, Raichle ME (1988) Localization of cognitive operations in the human brain. *Science* 240:1627-1631.
- Ratcliff R (1978) A theory of memory retrieval. *Psychol Rev* 85:59-108.
- Ratcliff R, McKoon G (1982) Speed and accuracy in the processing of false statements about semantic information. *J Exp Psychol Learn Mem Cogn* 8:16-36.

- Ratcliff R, Rouder JN (1998) Modeling response times for two-choice decisions. *Psychological Science* 9:347-356.
- Ratcliff R, Cherian A, Segraves M (2003) A comparison of macaque behavior and superior colliculus neuronal activity to predictions from models of two-choice decisions. *J Neurophysiol* 90:1392-1407.
- Ratcliff R, Gomez P, McKoon G (2004) A Diffusion Model Account of the Lexical Decision Task. *Psychol Rev* 111:159-182.
- Rogers RD, Owen AM, Middleton HC, Williams EJ, Pickard JD, Sahakian BJ, Robbins TW (1999) Choosing between small, likely rewards and large, unlikely rewards activates inferior and orbital prefrontal cortex. *J Neurosci* 19:9029-9038.
- Roitman JD, Shadlen MN (2002) Response of neurons in the lateral intraparietal area during a combined visual discrimination reaction time task. *J Neurosci* 22:9475-9489.
- Rossion B, Pourtois G (2004) Revisiting Snodgrass and Vanderwart's object pictorial set: The role of surface detail in basic-level object recognition. *Perception* 33:217-236.
- Salvador R, Suckling J, Coleman MR, Pickard JD, Menon D, Bullmore E (2005) Neurophysiological architecture of functional magnetic resonance images of human brain. *Cereb Cortex* 15:1332-1342.
- Sanfey AG, Rilling JK, Aronson JA, Nystrom LE, Cohen JD (2003) The neural basis of economic decision-making in the Ultimatum Game. *Science* 300:1755-1758.
- Schlaggar BL, Brown TT, Lugar HM, Visscher KM, Miezin FM, Petersen SE (2002) Functional neuroanatomical differences between adults and school-age children in the processing of single words. *Science* 296:1476-1479.

- Shadlen MN, Newsome WT (2001) Neural basis of a perceptual decision in the parietal cortex (area LIP) of the rhesus monkey. *J Neurophysiol* 86:1916-1936.
- Smith PL, Vickers D (1988) The accumulator model of two-choice discrimination. *Journal of Mathematical Psychology* 32:135-168.
- Snyder AZ (1996) Difference image versus ratio image error function forms in PET-PET realignment. In: *Quantification of brain function using PET* (Bailey D, Jones T, eds). San Diego: Academic Press.
- Talairach J, Tournoux P (1988) *Co-Planar Stereotaxic Atlas of the Human Brain*. New York: Thieme Medical Publishers, Inc.
- Thielscher A, Pessoa L (2007) Neural correlates of perceptual choice and decision making during fear-disgust discrimination. *J Neurosci* 27:2908-2917.
- Usher M, McClelland JL (2001) The time course of perceptual choice: The leaky, competing accumulator model. *Psychol Rev* 108:550-592.
- Wheeler M, Shulman G, Buckner R, Miezin F, Velanova K, Petersen S (2006) Evidence for separate perceptual reactivation and search processing during remembering. *Cereb Cortex* 16:949-959.
- Wheeler ME, Buckner RL (2003) Functional dissociation among components of remembering: Control, perceived oldness, and content. *J Neurosci* 23:3869-3880.
- Wheeler ME, Buckner RL (2004) Functional-anatomic correlates of remembering and knowing. *Neuroimage* 21:1337-1349.
- Winer B, Brown D, Michels K (1991) *Statistical Principles in Experimental Design*, Third Edition. New York: McGraw-Hill.

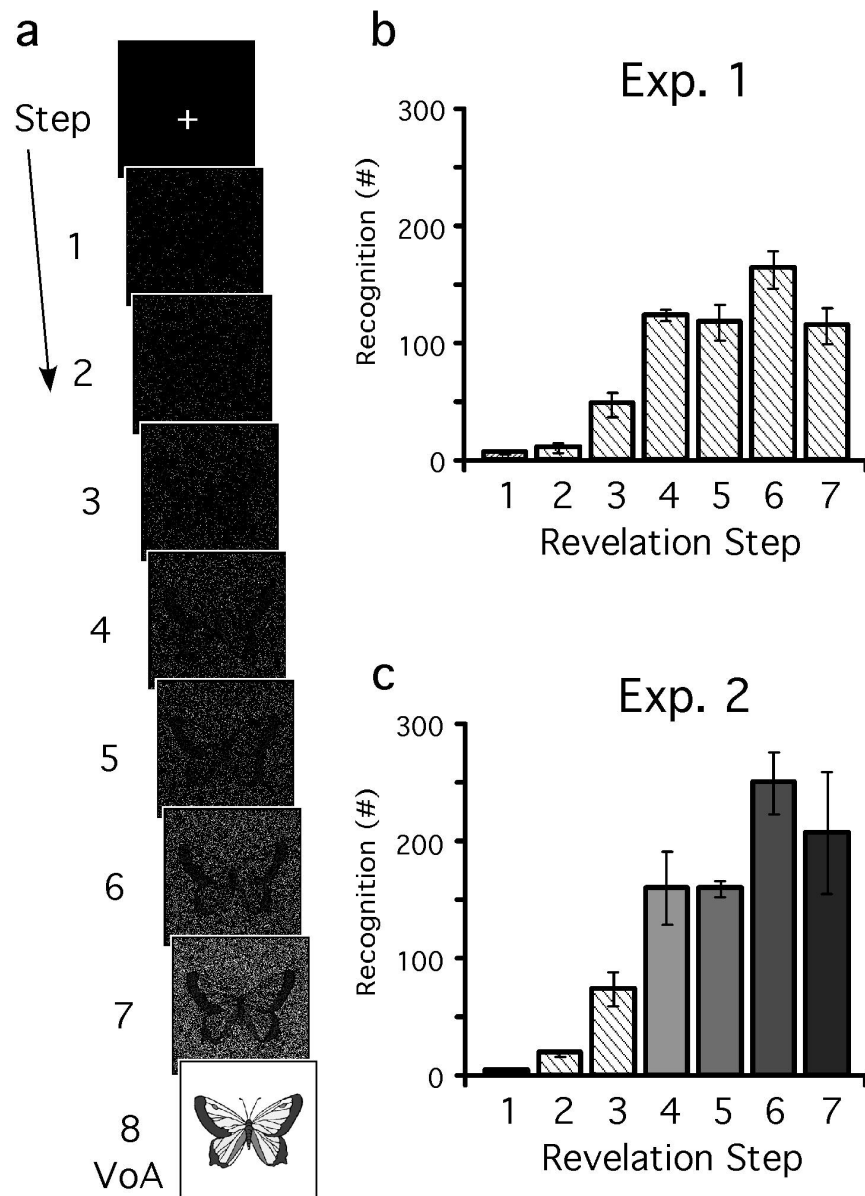


Figure 1. Task design and behavioral results. a) The schematic illustrates the task design. In Exp2, revelation proceeded every 2 s until the object was revealed at the 8th and final step (14 s). In Exp1 (not depicted), jitter occurred during revelation. Subjects pressed a button when they could identify the picture with a reasonable degree of confidence, and again at VoA if earlier recognition had been correct. ITIs (jitter) varied from 2-6 s. Revelation steps are numbered (1-8). b-c) Distribution of TRs for Experiments 1 and 2, in 2 s bins. The total number of responses (s.d. bars) are plotted as a function of the step of revelation. In Exp1, recognition responses were collapsed to identify ROIs. In Exp2, bins were analyzed separately to identify time-dependent differences in BOLD fMRI activity. c) The levels of shading represent the four main conditions of interest in Exp2 imaging analyses.

122x170mm (300 x 300 DPI)

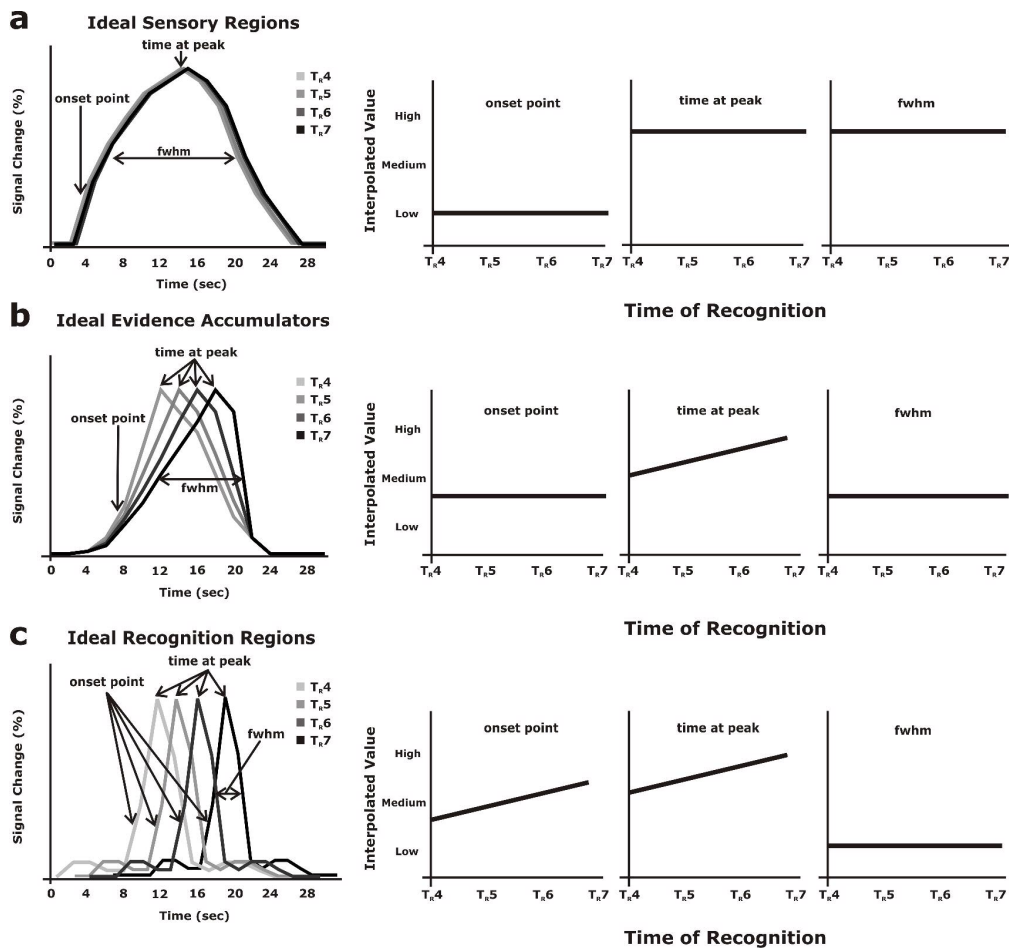


Figure 2. Idealized timecourse patterns in Exp2 related to a) sensory processing, b) accumulation, and c) moment of recognition processing. The graphs to the left depict time-dependent signal change (arbitrary units) in perceptual recognition at four different, successive, TRs (TR4-7). a) In sensory areas, onset, peak, and FWHM were not expected to vary as a function of TR. b) Because evidence gathering should begin when information becomes available, only time-to-peak in activity was expected to vary with TR in accumulators. c) Both onset and peak times should vary in moment of recognition regions that become active at the time of recognition. This late, discrete response should produce a narrow timecourse.

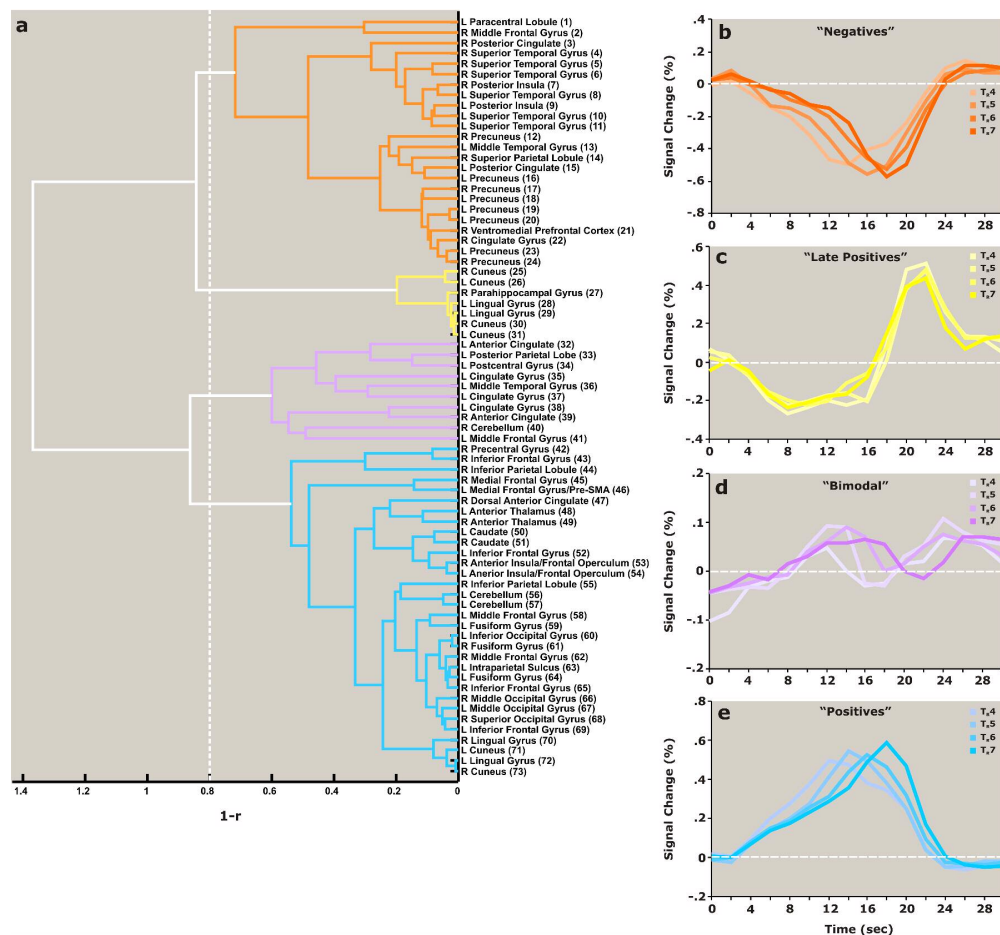


Figure 3. Cluster tree and averaged TR-dependent timecourses. a) The cluster tree displays the similarity of timecourses across ROIs in terms of a distance unit ($1 - r$). ROIs are listed along the y-axis and labeled according to atlas coordinate (cross-reference with Tables 1-4). ROIs linked across greater distances on the x-axis exhibited more disparate timecourses. As $1 - r$ values approach 0, timecourse similarity increases. As $1 - r$ increases above +1.00, timecourses become negatively correlated. The vertical dashed line shows where pruning the tree at $1 - r = 0.80$ separated the tree into 4 major clusters. The cophenetic correlation coefficient was 0.8234, suggesting very little distortion in the data in order to construct the tree. **b-e)** Timecourses for TR4-7 are averaged across all ROIs in each major subcluster, and across graphs the timecourses are color-coded by cluster membership and are graphed, in units of percent signal change from baseline (0%; horizontal dashed line), as a function of time.

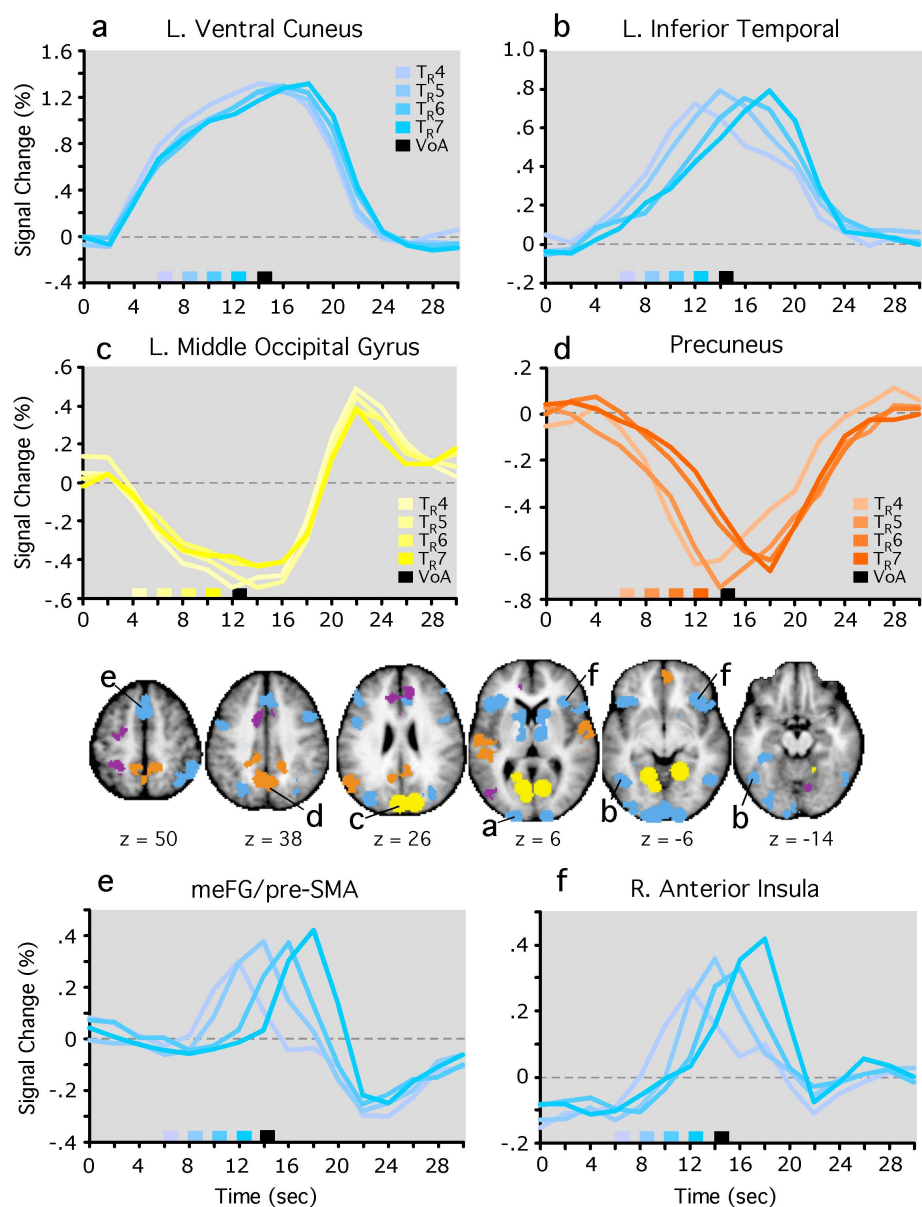


Figure 4. Select regions of interest and their timecourse data. Regions of interest from Exp1 are shown near center, color-coded by Exp2 cluster membership at $1 - r = 0.8$ (see Fig. 3). ROIs are displayed in horizontal slices over the top of the anatomical template used in stereotaxic atlas transformation. Difference in mm from AC-PC is noted below each slice. In a-f, timecourses for TR4-7 are graphed, in units of percent signal change from baseline (0%), as a function of time. Timecourses are color-coded according to the legend. TR1 began at 0 s. The onsets of steps 4-7 are denoted by different bar colors on the x-axis, as denoted by the legend. Step 8 (VoA), which began at 14 s, is denoted by a black bar on the x-axis. The marker for VoA is for reference only. a) left ventral cuneus (peak voxel coordinate, -19, -99, +2), b) left IT (-42, -63, -9), c) left cuneus (-1, -83, +25), d) right precuneus (+2, -60, +37), e) meFG/pre-SMA (-1, +14, +51), f) right aI/fO (+33, +22, -2).

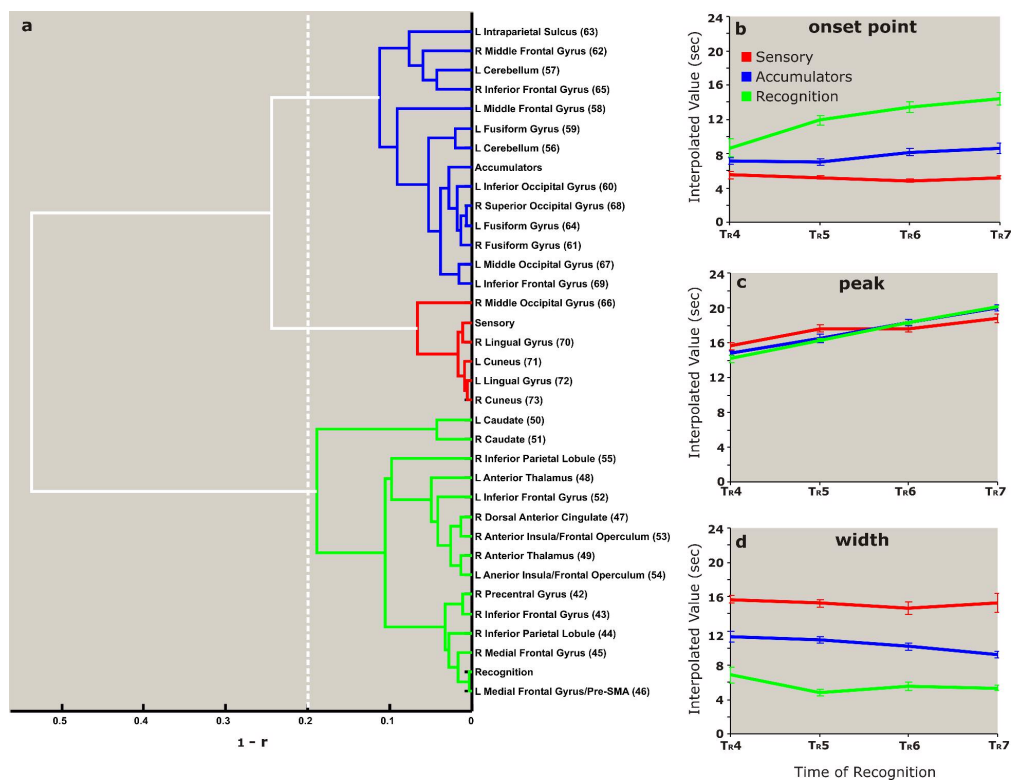


Figure 5. Hierarchical cluster analysis of interpolation data. Each of the 32 ROIs from the positive waveform cluster were subjected to interpolation analysis that defined each region's onset point, peak, and width. a) Cluster tree representing the three categories of regions based on the predicted outcomes from Figure 2. (Red = Sensory Processors; Blue = Accumulators; Green = Recognition Regions). The cluster was cut at a $1-r$ value of 0.2 to allow for each region to belong to a distinct cluster. The ideal values from Figure 2 were also placed into the correlation matrix in order to determine which of the 32 regions clustered near to or far from these hypothesized categories. b-d) Mean interpolation values for each of the three sets of regions identified in the cluster analysis separated by onset point, peak, and width. Bars represent standard error of the mean (SEM). Note that the slope of increasing peak times (5c) in sensory ROIs differed significantly from accumulation and recognition ROIs.

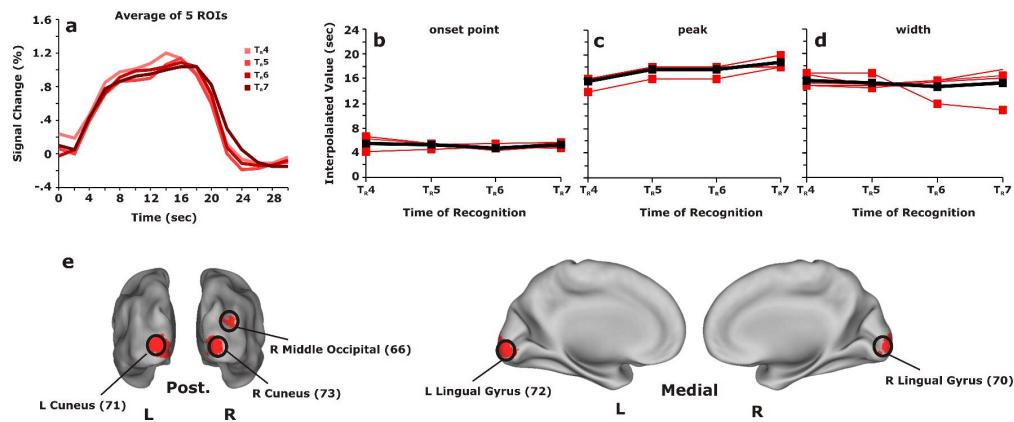


Figure 6. Interpolation analysis, sensory processors. a) time courses for five sensory ROIs identified by the interpolation analysis. Time courses are shaded by TR (see Fig. 4 caption). **b-d)** The data for each sensory region is shown in red and the mean of those values is indicated by a thick black line for onset, peak, and width **e)** The ROIs are shown projected onto inflated cortical surfaces of left and right hemispheres. L = left; R = right; Post. = posterior; TR = step in which recognition occurred.

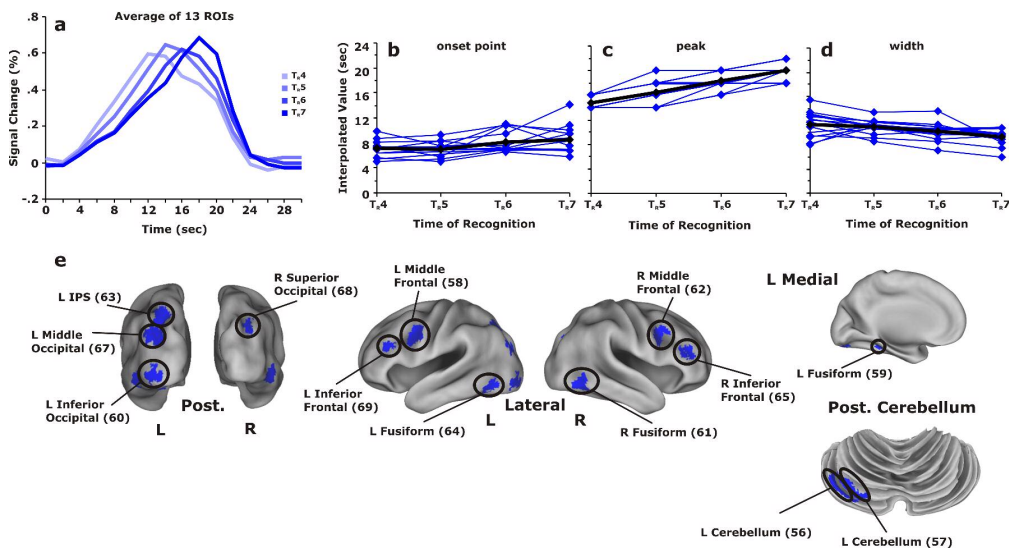


Figure 7. Interpolation analysis, accumulators. a) time courses for thirteen accumulator ROIs identified by the interpolation analysis. Time courses are shaded by TR (see Fig. 4 caption). b-d) The data for each accumulator region is shown in blue and the mean of those values is indicated by a thick black line for onset, peak, and width. e) ROIs are projected onto posterior and lateral views of inflated cortical surfaces.

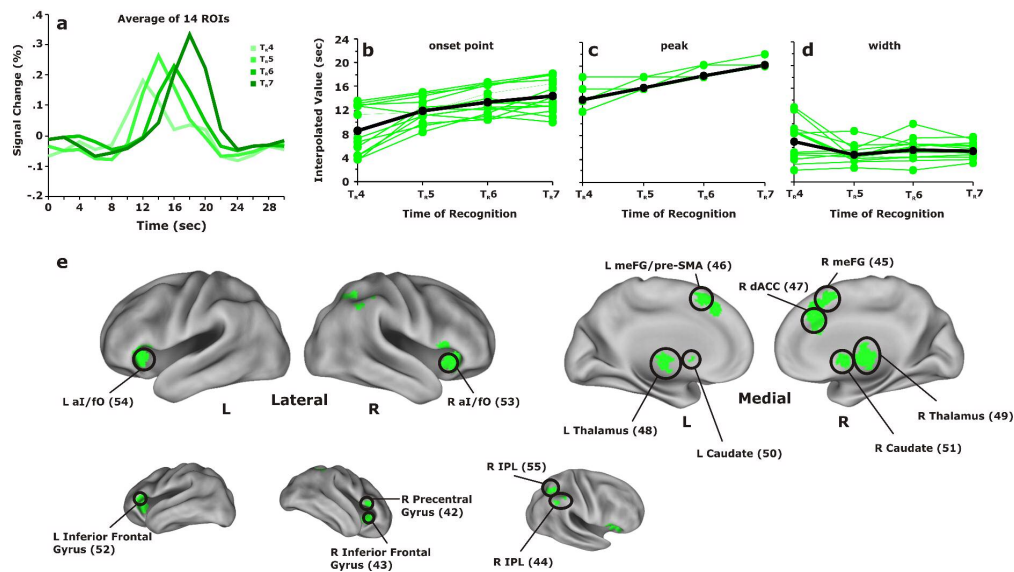


Figure 8. Interpolation analysis, moment of recognition areas. a) time courses for fourteen recognition ROIs identified by the interpolation analysis. Time courses are shaded by TR (see Fig. 4 caption). **b-d)** The data for each recognition region is shown in green and the mean of those values is indicated by a thick black line for onset, peak, and width. **e)** ROIs are projected onto inflated cortical surfaces.

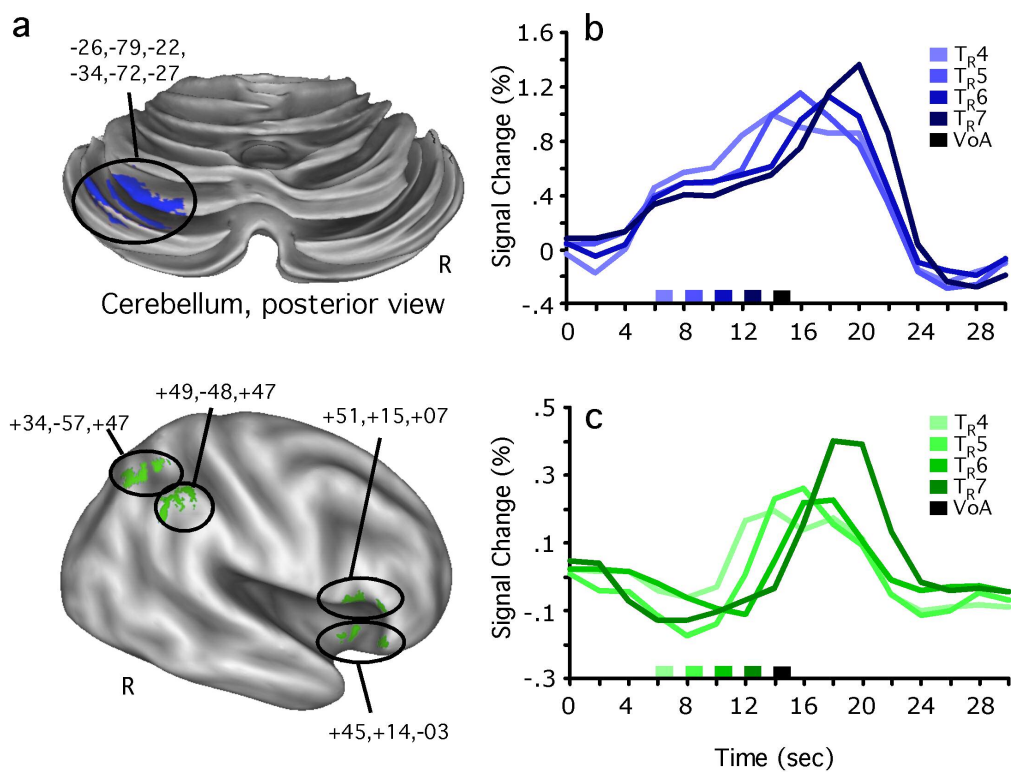


Figure S1. a) ROIs for two accumulator (blue) and four recognition (green) regions showing relatively late onsets are projected onto inflated cerebellar and cortical surfaces. Cerebellum (top) is shown from a posterior view and right hemisphere (bottom) from a lateral view. b) Timecourses for TR4-7, averaged across the two 'late accumulator' ROIs, are plotted as a function of time. c) Timecourses for TR4-7, averaged across the four 'late recognition' (green) ROIs are plotted. See Fig. 4 caption for details.

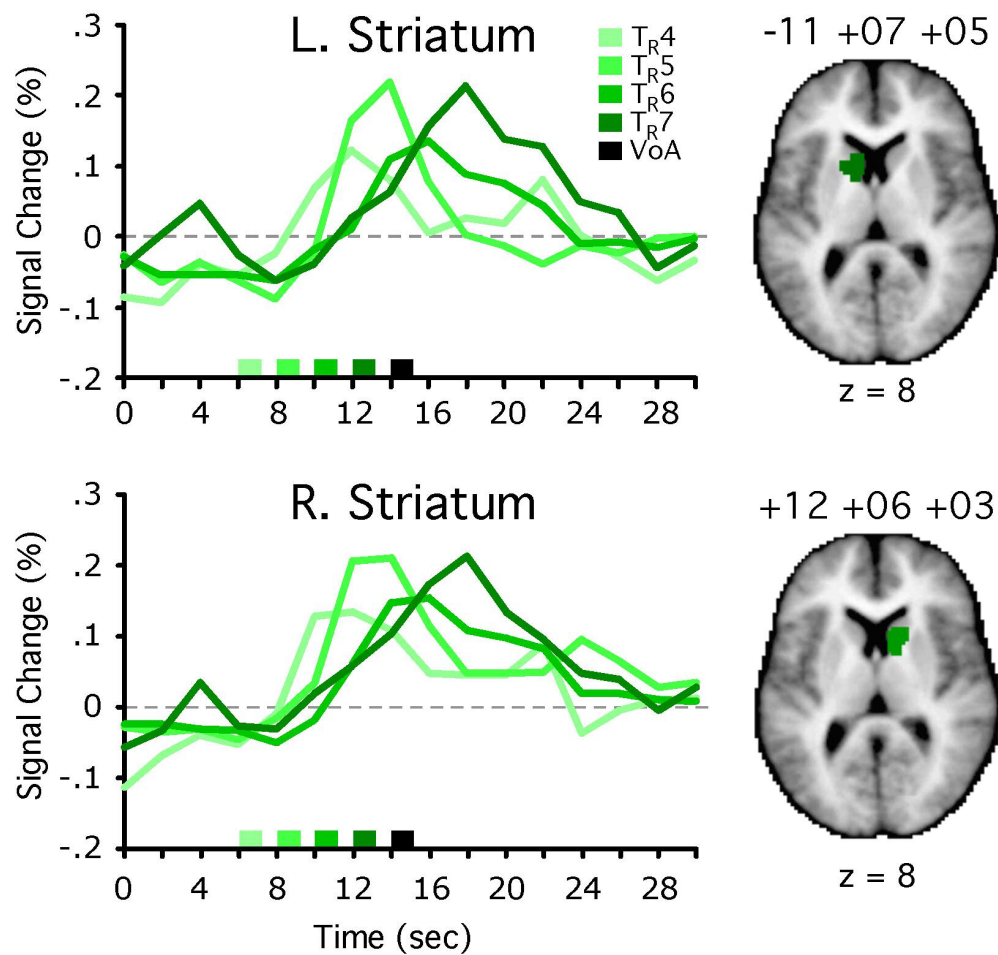


Figure S2. TR-dependent timecourses from left and right striatum (~head of the caudate) are plotted separately. While these regions clustered with recognition regions (Figure 5), they were located further away from the predicted idealized parameters than the other regions. Thus, while the interpolation parameters were somewhat consistent with other recognition regions, from a qualitative standpoint regions such as these produced noisier timecourses than others that clustered nearer to the predicted idealized parameters.

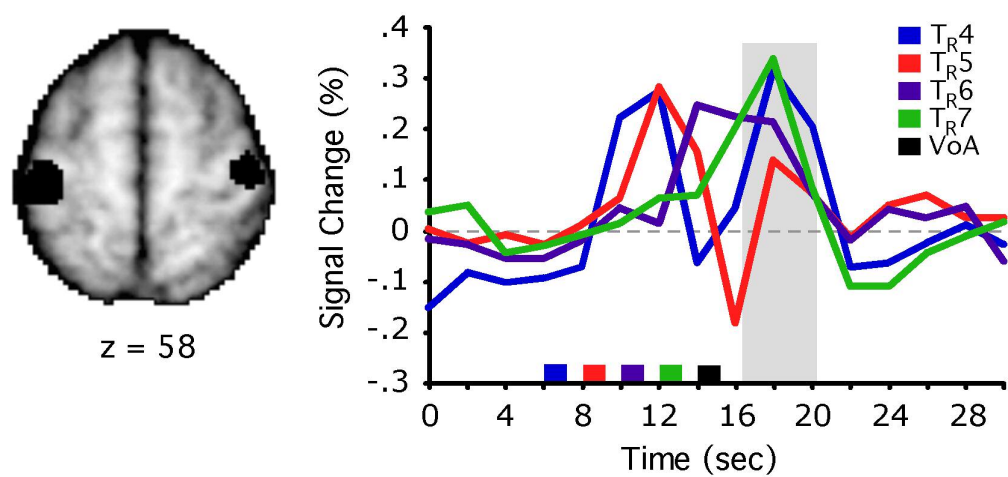


Figure S3. Region of interest in bilateral sensorimotor cortex is depicted to the right, overlaid onto a horizontal slice of the template anatomy at Talairach $z = 58$. Details are as per Fig. 4. The shaded area represents the time window in which a transient BOLD response in VoA should occur, assuming a ~ 2 sec delay in onset.

Supplementary Text

Experiment 2: Item Analysis

Although most stimuli were associated with a clear spread of response times across T_R 1-7, some were consistently recognized early in the trial, while others were consistently recognized late in the trial. This pattern suggests that the identity of some pictures depended on the degree to which certain stimulus elements became visible during unmasking. This situation would cause, even for low level sensory processors, a weak dependence on time of detection. To assess this, we performed an item analysis to assess the variance (across subjects) in response times for each item. Because each subject's stimuli were drawn separately from a larger stimulus pool, each subject received a different but overlapping set of stimuli. A total of 222 different pictures were presented across subjects. Of these, 17 were presented to only one subject. Because variance data were not applicable, we dropped these 17 stimuli from the analysis. Of the remaining 205 pictures, recognition times were designated using the time (sec) at which recognition occurred. Across subjects, the mean recognition times for the 205 items ranged from 4 to 16 sec ($\mu = 12$, $\sigma = 2.6$) with standard deviations ranging from 0.0 - 5.6 sec ($\mu = 1.8$, $\sigma = 1.0$). Of the 205 pictures, 121 (59%) had standard deviations in recognition times of less than 2.0 (1 timepoint). Thus, while there was significant overall variance in T_R across items, some items tended to be associated with similar recognition times across subjects. This finding suggests an interaction between the unmasking procedure and stimulus features that could influence recognition. We address possible consequences of this finding in the discussion.